

NM OIL-CONS. COMMISSION
Drawn by D
At UNITED STATES
DEPARTMENT OF THE INTERIOR
GEOLOGICAL SURVEYSUBMIT IN THE CASE*
(Other instructions on
reverse side)Form approved.
Budget Bureau No. 42-R1425.

30-015-24093

C/SF
APPLICATION FOR PERMIT TO DRILL, DEEPEN, OR PLUG BACK

1a. TYPE OF WORK

DRILL ☒DEEPEN ☐PLUG BACK ☐

b. TYPE OF WELL

OIL
WELL ☒GAS
WELL ☐

OTHER

SINGLE
ZONE ☐MULTIPLE
ZONE ☐

2. NAME OF OPERATOR

Westall - Mask

3. ADDRESS OF OPERATOR

P.O. Drawer 1477 Roswell, New Mexico 88201

4. LOCATION OF WELL (Report location clearly and in accordance with any State requirements.)

At surface

790' FNL and 990' FEL

At proposed prod. zone

14. DISTANCE IN MILES AND DIRECTION FROM NEAREST TOWN OR POST OFFICE*

15. DISTANCE FROM PROPOSED*

LOCATION TO NEAREST
PROPERTY OR LEASE LINE, FT.
(Also to nearest drlg. unit line, if any)

790'

18. DISTANCE FROM PROPOSED LOCATION*

TO NEAREST WELL, DRILLING, COMPLETED,
OR APPLIED FOR, ON THIS LEASE, FT.

1520'

16. NO. OF ACRES IN LEASE

160

19. PROPOSED DEPTH

4200'

17. NO. OF ACRES ASSIGNED
TO THIS WELL

40

20. ROTARY OR CABLE TOOLS-

Rotary

21. ELEVATIONS (Show whether DF, RT, GR, etc.)

3666.54 GR

23.

PROPOSED CASING AND CEMENTING PROGRAM

SIZE OF HOLE	SIZE OF CASING	WEIGHT PER FOOT	SETTING DEPTH	QUANTITY OF CEMENT
11"	8 5/8"	20#	650'	Approx. 250 Sks to Circ
7 7/8"	4 1/2"	9.5#	4200'	Approx. 400 Sks to Circ

Blowout Preventer will be Double Manual (shaeffer) B.O.P.
with 300 # testMud Program - We will use fresh water to 650' then use salt
gel to total depth

No anticipated abnormal pressure or temperatures

Anticipated Starting Date will be February 15, 1982

Topps Yates 2600' Queen 3400' Grayburg 4000'

RECEIVED
JAN 27 1982

IN ABOVE SPACE DESCRIBE PROPOSED PROGRAM: If proposal is to deepen or plug back, give data on present productive zone and proposed new productive zone. If proposal is to drill or deepen directionally, give pertinent data on subsurface locations and measured and true vertical depths. Give blowout preventer program, if any.

24.

SIGNED

Richard E. Barton, Personal

TITLE Representative for the

DATE 1-26-82

Estate of Jack Mask

(This space for Federal or State office use)

PERMIT NO.

APPROVED

APPROVAL DATE

APPROVED BY

FEB 16 1982

TITLE

APPROVAL SUBJECT TO

GENERAL REQUIREMENTS AND

SPECIAL STIPULATIONS

ATTACHED

CONDITIONS OF APPROVAL, IF ANY

JAMES A. GILLHAM

DISTRICT SUPERVISOR

*See Instructions On Reverse Side

NEW MEXICO OIL CONSERVATION COMMISSION
WELL LOCATION AND ACREAGE DEDICATION PLAT

Form C-102
Supersedes C-128
Effective 1-1-85

All distances must be from the outer boundaries of the Section.

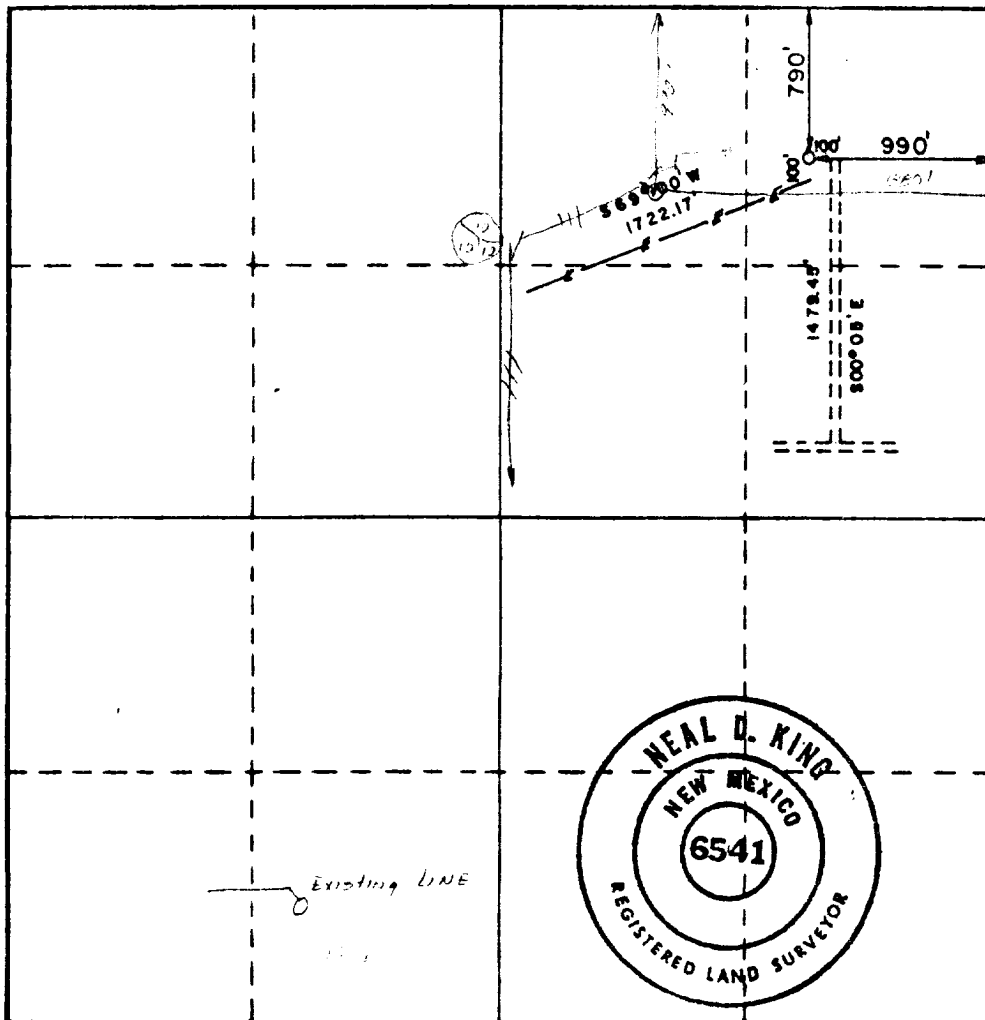
Operator Westall & Mask			Lease Hinkle Federal B		Well No. 16
Unit Letter A	Section 26	Township 18S	Range 31E	County Eddy	
Actual Footage Location of Well: 790 feet from the North line and 990 feet from the East line					
Ground Level Elev. 3666.54	Producing Formation GRAYBURG		Pool Shawnee V- SR- G- G	Dedicated Acreage: 40 Acres	

1. Outline the acreage dedicated to the subject well by colored pencil or hatchure marks on the plat below.
2. If more than one lease is dedicated to the well, outline each and identify the ownership thereof (both as to working interest and royalty).
3. If more than one lease of different ownership is dedicated to the well, have the interests of all owners been consolidated by communitization, unitization, force-pooling, etc?

☐ Yes ☐ No If answer is "yes," type of consolidation _____

If answer is "no," list the owners and tract descriptions which have actually been consolidated. (Use reverse side of this form if necessary.) _____

No allowable will be assigned to the well until all interests have been consolidated (by communitization, unitization, forced-pooling, or otherwise) or until a non-standard unit, eliminating such interests, has been approved by the Commission.



CERTIFICATION

I hereby certify that the information contained herein is true and complete to the best of my knowledge and belief.

Richard E. Barton
Name

Richard E. Barton

Personal Representative
for the Estate of JackMask

Company

Westall - Mask

Date

1-27-82

I hereby certify that the well location shown on this plat was plotted from field notes of actual surveys made by me or under my supervision, and that the same is true and correct to the best of my knowledge and belief.

Date Surveyed

December 12, 1981

Registered Professional Engineer
and/or Land Surveyor

Neal D. King R.L.S.
Certificate No.

6541

0 330 660 990 1320 1650 1980 2310 2640 2970 3300 3630 3960 4290 4620 4950 5280 5610 5940 6270 6600