

STATE OF NEW MEXICO
ENERGY AND MINERALS DEPARTMENT

L. CONSERVATION DIVISION
P. O. BOX 2088
SANTA FE, NEW MEXICO 87501

30-015-24096

Form C-101
Revised 10-1-78

NO. OF COPIES RECEIVED	
DISTRIBUTION	
SANTA FE	1
FILE	1
U.S.G.S.	2
LAND OFFICE	
OPERATOR	1

FEB 19 1982

O. C. D.

ARTESIA OFFICE

5A. Indicate Type of Lease	
STATE <input type="checkbox"/>	FEE <input checked="" type="checkbox"/>
5. State Oil & Gas Lease No.	
7. Unit Agreement Name	
8. Farm or Lease Name	
Emma "QE" Com	
9. Well No.	
2	
10. Field and Pool, or Wildcat	
Hog Tower Undes. Morrow	
12. County	
Eddy	

APPLICATION FOR PERMIT TO DRILL, DEEPEN, OR PLUG BACK

a. Type of Work	
DRILL <input checked="" type="checkbox"/>	DEEPEN <input type="checkbox"/>
b. Type of Well	
OIL WELL <input type="checkbox"/>	GAS WELL <input checked="" type="checkbox"/>
c. Name of Operator	
Yates Petroleum Corporation	
d. Address of Operator	
207 S. 4th, Artesia, New Mexico 88210	
e. Location of Well	
UNIT LETTER 0	LOCATED 660' FEET FROM THE South LINE
1980'	FEET FROM THE East LINE OF SEC. 21 TWP. 19S RGE. 24E NMPM
f. Elevations (Show whether D.F., K.I., etc.)	
3712 GL	
g. Proposed Depth	
9000'	
h. Formation	
Morrow	
i. Rotary or C.T.	
Rotary	
j. Kind & Status Plug. Bond	
Blanket	
k. Drilling Contractor	
Empire	
l. Approx. Date Work will start	
ASAP	

PROPOSED CASING AND CEMENT PROGRAM

SIZE OF HOLE	SIZE OF CASING	WEIGHT PER FOOT	SETTING DEPTH	SACKS OF CEMENT	EST. TOP
17 1/2"	13 3/8"	48# J-55	approx. 275'	300 sx	circulated
12 1/4"	8 5/8"	24# J-55	approx. 1100'	800 sx	circulated
7 7/8"	5 1/2" or 4 1/2"	15.5 - 17#	TD	600 sx	
		10.5 - 11.6#			

We intend to drill and test the Morrow and intermediate formations. Approximately 275' of surface casing will be set to shut off gravel and cavings. The intermediate casing will be set around 100' below the Artesian Water Zone. If commercial, will run 4 1/2" or 5 1/2" with 600' of cement cover, then perforate and stimulate as needed for production.

MUD PROGRAM: FW gel and LCM to 1100', Fresh water to 5000' KCL @3800', Drispak and starch KCL to 8250', Drispak, starch and salt gel to TD.

BOP PROGRAM: BOP's and hydril will be installed on the 8 5/8" casing and tested daily.

GAS NOT DEDICATED.

APPROVAL VALID FOR 180 DAYS
PERMIT EXPIRES 8-23-82
UNLESS DRILLING UNDERWAY

ABOVE SPACE DESCRIBE PROPOSED PROGRAM; IF PROPOSAL IS TO DEEPEN OR PLUG BACK, GIVE DATA ON PRESENT PRODUCTIVE ZONE AND PROPOSED NEW PRODUCTION ZONE. GIVE BLOWOUT PREVENTER PROGRAM, IF ANY.

I hereby certify that the information above is true and complete to the best of my knowledge and belief.

Signed [Signature] Title Regulatory Manager Date 2/18/82

(This space for State Use)

APPROVED BY [Signature] TITLE OIL AND GAS INSPECTOR DATE FEB 23 1982

CONDITIONS OF APPROVAL, IF ANY:

Notify N.M.C.C. in sufficient time to witness cementing the 8 5/8" casing

MEXICO OIL CONSERVATION COMMI.
WELL LOCATION AND ACREAGE DEDICATION PLAT

Form C-102
Supersedes C-128
Effective 1-1-65

All distances must be from the outer boundaries of the Section.

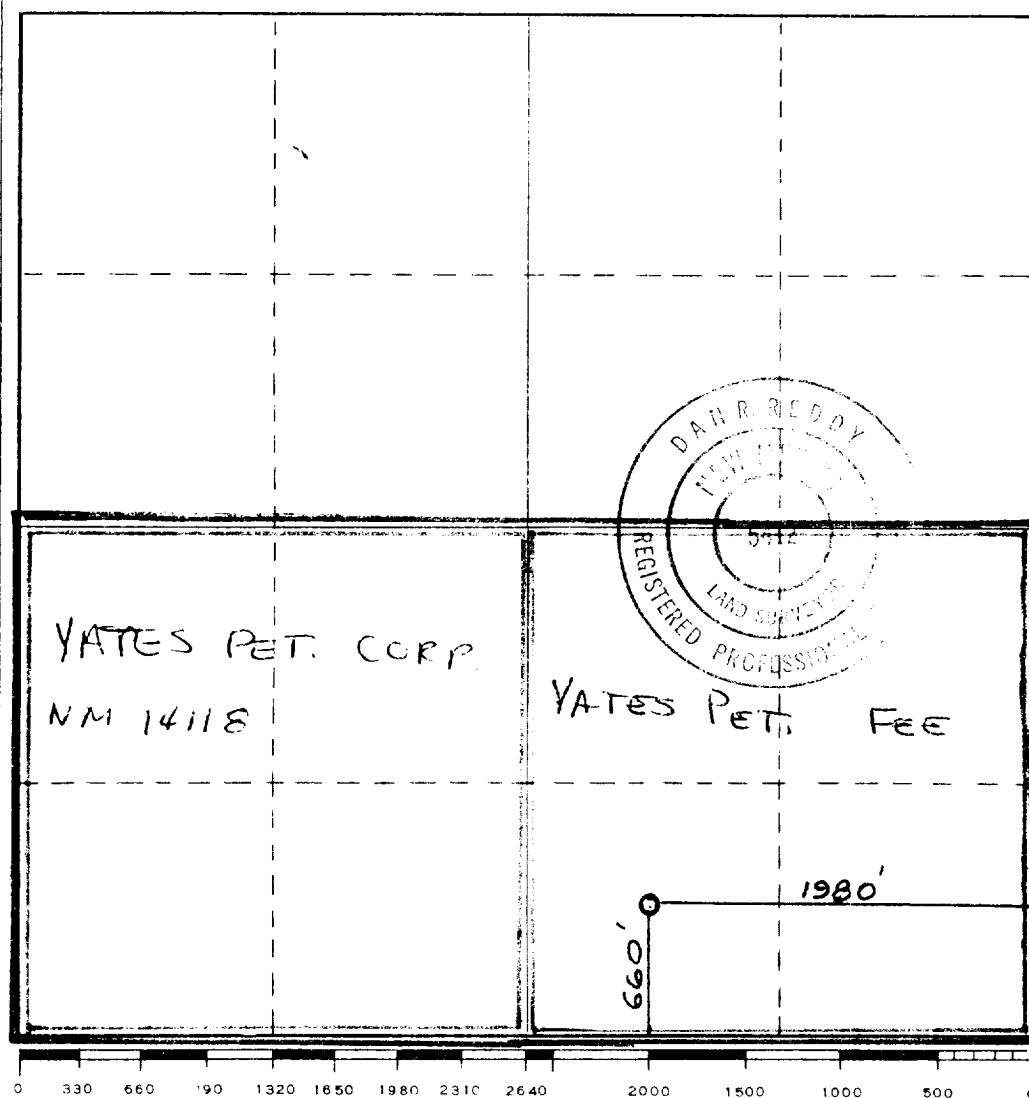
Operator YATES PETROLEUM CORPORATION			Lease Emma QE Com		Well No. 2
Unit Letter O	Section 21	Township 19 South	Range 24 East	County Eddy	
Actual Footage Location of Well: 660 feet from the South line and 1980 feet from the East line					
Ground Level Elev. 3712.	Producing Formation MORROW		Pool <i>Flag To</i> UNDER MORROW		Dedicated Acreage: 320 Acres

1. Outline the acreage dedicated to the subject well by colored pencil or hachure marks on the plat below.
2. If more than one lease is dedicated to the well, outline each and identify the ownership thereof (both as to working interest and royalty).
3. If more than one lease of different ownership is dedicated to the well, have the interests of all owners been consolidated by communitization, unitization, force-pooling, etc?

☒ Yes ☐ No If answer is "yes" type of consolidation COMMUNITIZATION

If answer is "no," list the owners and tract descriptions which have actually been consolidated. (Use reverse side of this form if necessary.) _____

No allowable will be assigned to the well until all interests have been consolidated (by communitization, unitization, forced-pooling, or otherwise) or until a non-standard unit, eliminating such interests, has been approved by the Commission.



CERTIFICATION

I hereby certify that the information contained herein is true and complete to the best of my knowledge and belief.

Gliserio Rodriguez
Name

GLISERIO RODRIGUEZ
Position

REG. MGR.
Company

YATES PETROLEUM CORP
Date

2-19-82

I hereby certify that the well location shown on this plat was plotted from field notes of actual surveys made by me or under my supervision, and that the same is true and correct to the best of my knowledge and belief.

Date Surveyed

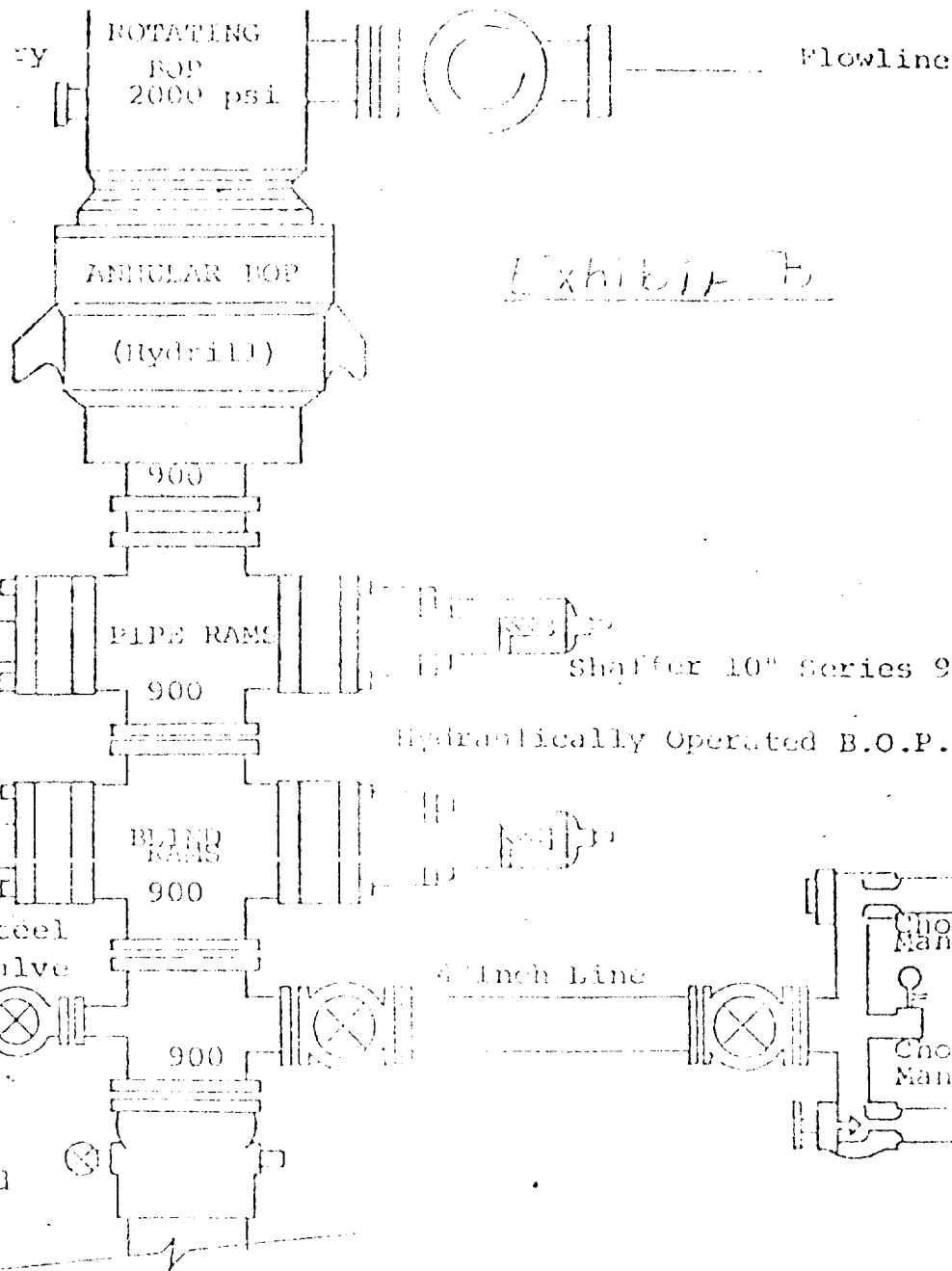
February 18, 1982

Registered Professional Engineer
and/or Land Surveyor

Dan R. Riddy
Certificate No.

NM PE&LS #5412

stating head if necessary
Fill up Line



FOLLOWING CONSTITUTE MINIMUM BLOWOUT PREVENTER REQUIREMENTS

1. All preventers to be hydraulically operated with secondary manual control installed prior to drilling out from under casing.
2. Choke outlet to be a minimum of 4" diameter.
3. Kill line to be of all steel construction of 2" minimum diameter.
4. All connections from operating manifolds to preventers to be all steel, hole or tube a minimum of one inch in diameter.
5. The available closing pressure shall be at least 15% in excess of that required with sufficient volume to operate the B.O.P.'s.
6. All connections to and from preventer to have a pressure rating equivalent to that of the B.O.P.'s.
7. Inside blowout preventer to be available on the floor.
8. Operating controls located a safe distance from the rig floor.
9. Hole must be kept filled on trips before returning to casing. Operator not responsible for blowouts resulting from not keeping hole full.
10. D. P. float must be installed and used before core of first gas intrusion.