

All distances must be from the outer boundaries of the Section.

APR 06 '88

Operator YATES PETROLEUM CORPORATION ✓		Lease EMMA QE COM		O. C. D. O. C. D.		Well No. 2
Unit Letter 0	Section 21	Township 19 South	Range 24 East	County ARTESIA, OFFICE Eddy		

Actual Footage Location of Well:

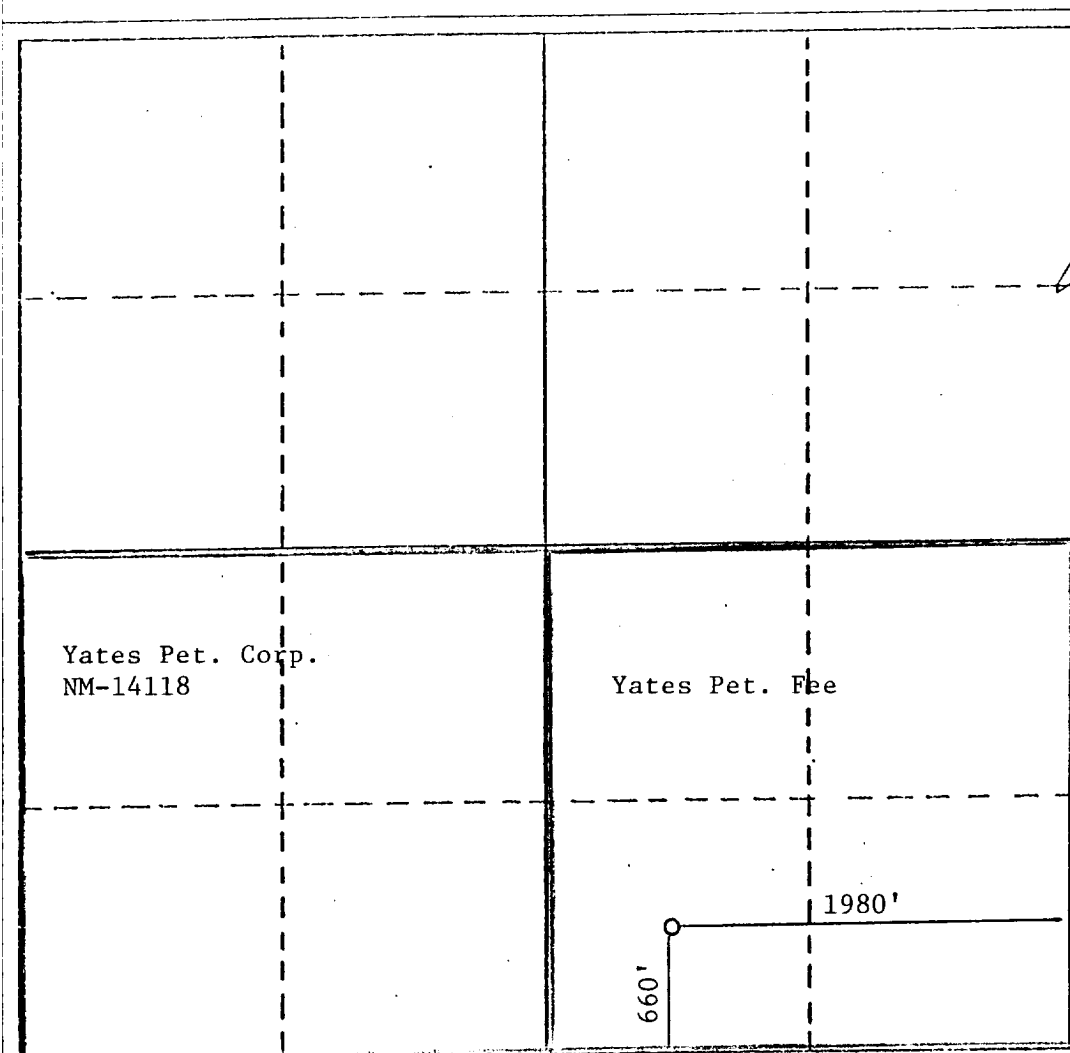
660	feet from the	South	line and	1980	feet from the	East	line	
Ground Level Elev. 3712'	Producing Formation Cisco-Wolfcamp		Pool Und. Penasco Draw-Permo Penn		Dedicated Acreage: 320			Acre

1. Outline the acreage dedicated to the subject well by colored pencil or hatchure marks on the plat below.
2. If more than one lease is dedicated to the well, outline each and identify the ownership thereof (both as to working interest and royalty).
3. If more than one lease of different ownership is dedicated to the well, have the interests of all owners been consolidated by communitization, unitization, force-pooling, etc?

☒ Yes ☐ No If answer is "yes," type of consolidation Communitization

If answer is "no," list the owners and tract descriptions which have actually been consolidated. (Use reverse side of this form if necessary.)

No allowable will be assigned to the well until all interests have been consolidated (by communitization, unitization, forced-pooling, or otherwise) or until a non-standard unit, eliminating such interests, has been approved by the Division.



CERTIFICATION

I hereby certify that the information contained herein is true and complete to the best of my knowledge and belief.

Juanita Goodlett
Name

Juanita Goodlett

Position

Production Supervisor

Company

Yates Petroleum Corporation

Date

4-4-88

I hereby certify that the well location shown on this plat was plotted from field notes of actual surveys made by me or under my supervision, and that the same is true and correct to the best of my knowledge and belief.

REFER TO ORIGINAL PLAT

Date Surveyed dated 2-18-82

Registered Professional Engineer and/or Land Surveyor

Certificate No.

