

STATE OF NEW MEXICO
ENERGY AND MINERALS DEPARTMENT

SANTA FE, NEW MEXICO 8750

All distances must be from the outer boundaries of the Section.

Operator Collier Energy, Inc.		Lease Valley South		Well No. #2
Unit Letter F	Section 23	Township 19 South	Range 27 East	County Eddy
Actual Postage Location of Well: 1980 feet from the North line and 1980 feet from the West line				
Ground Level Elev. 3473	Producing Formation Grayburg	Pool Wildcat	Dedicated Acreage: 40 Acres	

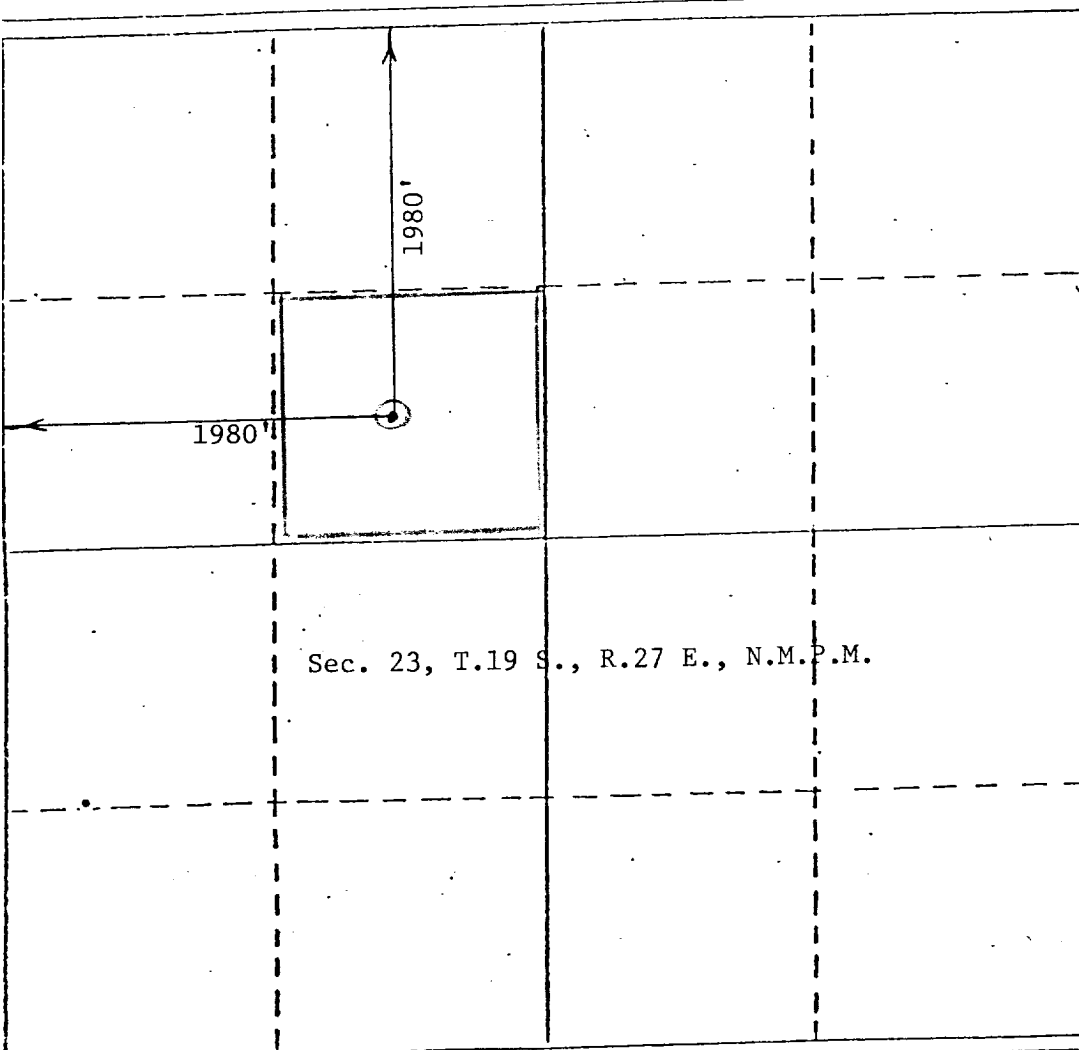
1. Outline the acreage dedicated to the subject well by colored pencil or hatchure marks on the plat below.
2. If more than one lease is dedicated to the well, outline each and identify the ownership thereof (RECEIVED working interest and royalty).
3. If more than one lease of different ownership is dedicated to the well, have the interests of all others been consolidated by communitization, unitization, force-pooling, etc?

MAR 25 1982

O. C. D.
ARTESIA, OFFICE

☐ Yes ☐ No If answer is "yes," type of consolidation _____

If answer is "no," list the owners and tract descriptions which have actually been consolidated. (Use reverse side of this form if necessary.)
No allowable will be assigned to the well until all interests have been consolidated (by communitization, unitization, forced-pooling, or otherwise) or until a non-standard unit, eliminating such interests, has been approved by the Division.



CERTIFICATION

I hereby certify that the information contained herein is true and complete to the best of my knowledge and belief.

Name **Timothy D. Cullen**
Position **President**
Company **Collier Energy, Inc.**
Date **March 23, 1982**

I hereby certify that the well location shown on this plat was plotted from field notes of actual surveys made by me or under my supervision, and that the same is true and correct to the best of my knowledge and belief.

Date Surveyed **March 18, 1982**
Registered Professional Engineer and/or Land Surveyor
JOHN D. JAQUESS
6290