

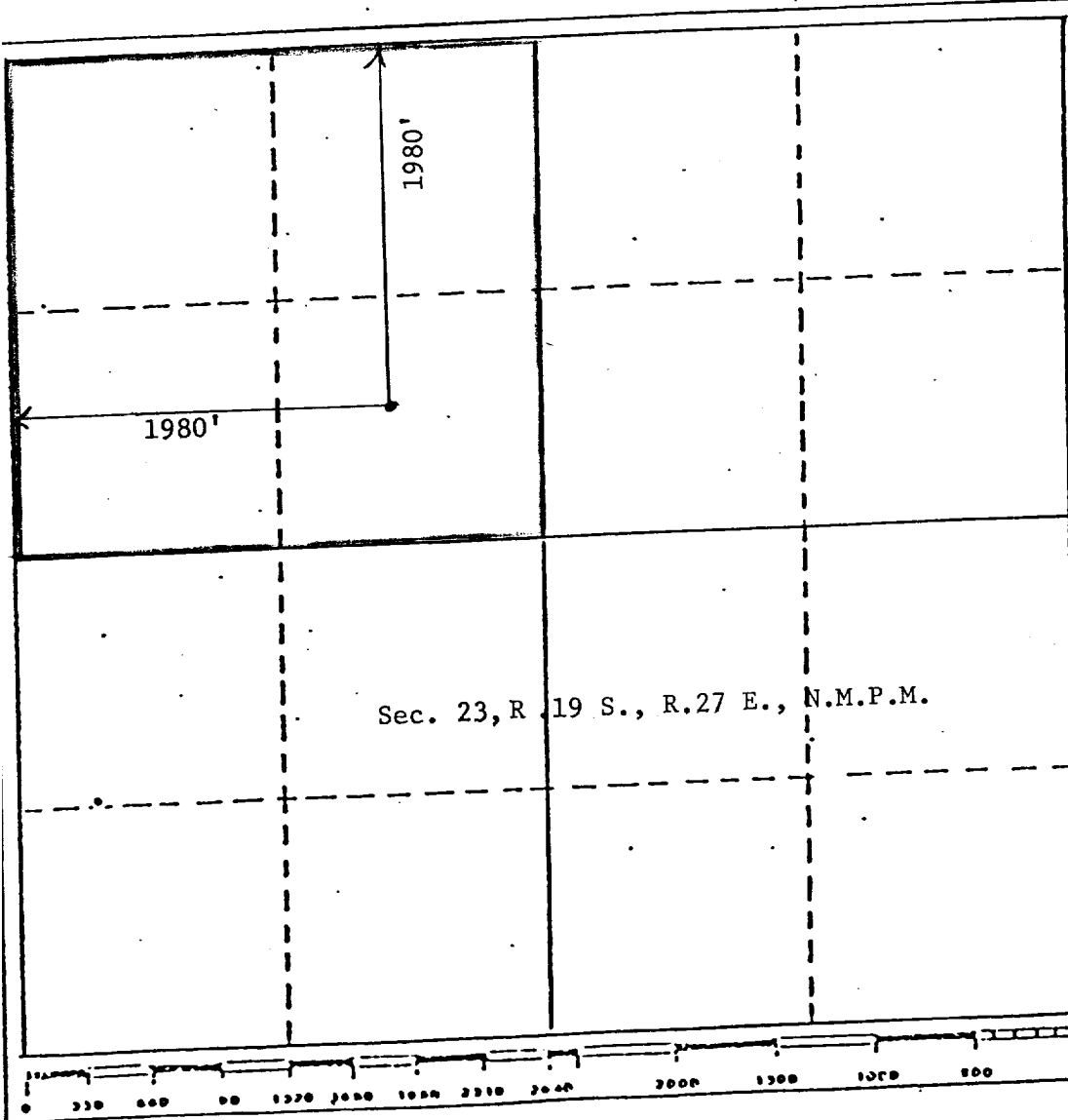
All distances must be from the outer boundaries of the Section.

Operator Collier Energy, Inc.		Lease South		Well No. #1	
Oil Letter F	Section 23	Township 19 South	Range 27 East	County O. C. D.	
Actual Well Location of Well: 1980 feet from the North line and 1980 feet from the West line					
Ground Level Elev. 3473	Producing Formation Grayburg		Pool Wildcat	Dedicated Acres 160	

1. Outline the acreage dedicated to the subject well by colored pencil or hatchure marks on the plat below.
2. If more than one lease is dedicated to the well, outline each and identify the ownership thereof (both as to working interest and royalty).
3. If more than one lease of different ownership is dedicated to the well, have the interests of all owners been consolidated by communitization, unitization, force-pooling, etc?

☒ Yes ☐ No If answer is "yes," type of consolidation N.M. communitization

If answer is "no," list the owners and tract descriptions which have actually been consolidated. (Use reverse side of this form if necessary.)
No allowable will be assigned to the well until all interests have been consolidated (by communitization, unitization, forced-pooling, or otherwise) or until a non-standard unit, eliminating such interests, has been approved by the Division.



CERTIFICATION

I hereby certify that the information contained herein is true and complete to the best of my knowledge and belief.

Name
Diakie Juel
Position
Production Clerk
Company
Collier Energy, Inc.
Date
1-26-83

I hereby certify that the well location shown on this plat was plotted from field notes of actual surveys made by me or under my supervision, and that the same is true and correct to the best of my knowledge and belief.

Date Surveyed
March 18, 1982
Registered Professional Engineer and/or Land Surveyor
John B. Jacques
Certificate No. 6299
Professional Engineer & L.S.