

NO. OF COPIES RECEIVED	
DISTRIBUTION	
SANTA FE	1
FILE	1
U.S.G.S.	2
LAND OFFICE	
OPERATOR	1

NEW MEXICO OIL CONSERVATION COMMISSION

RECEIVED
MAR 31 1982

O. C. D.
ARTESIA, OFFICE

30-015-24122
Form C-101
Revised 1-4-65

5A. Indicate Type of Lease

STATE ☒ FEE ☐

5. State Oil & Gas Lease No.

LG-3217; V-446

APPLICATION FOR PERMIT TO DRILL, DEEPEN, OR PLUG BACK

1a. Type of Work b. Type of Well OIL WELL <input type="checkbox"/> GAS WELL <input checked="" type="checkbox"/> OTHER <input type="checkbox"/> SINGLE ZONE <input checked="" type="checkbox"/> MULTIPLE ZONE <input type="checkbox"/>				7. Unit Agreement Name --	
2. Name of Operator Exxon Corporation				8. Farm or Lease Name New Mexico "DE" State	
3. Address of Operator P. O. Box 1400, Midland, TX 79702				9. Well No. 1	
4. Location of Well UNIT LETTER C LOCATED 660' FEET FROM THE North LINE AND 1980 FEET FROM THE West LINE OF SEC. 19 TWP. 19S RGE. 24E NMPM				10. Field and Well or Wildcat (Draw) Undesig. Antelope Sink-Morrow Gas	
				12. County Eddy	
				19. Proposed Depth 8700'	
				19A. Formation Morrow	
				20. Rotary or C.T. Rotary	
21. Elevations (Show whether DF, RT, etc.) 3805' GR		21A. Kind & Status Plug. Bond Blanket		21B. Drilling Contractor Unknown	
				22. Approx. Date Work will start May 15, 1982	

23.

PROPOSED CASING AND CEMENT PROGRAM

SIZE OF HOLE	SIZE OF CASING	WEIGHT PER FOOT	SETTING DEPTH	SACKS OF CEMENT	EST. TOP
26"	20"	94.0#	40'	60 sx	Surface
17 1/2"	13 3/8"	54.5#	300'	475 sx	Surface
12 1/4"	8 5/8"	32.0#	1750'	1350 sx	Surface
7 7/8"	5 1/2"	14, 15, 17#	8700'	915 sx	4300'

Mud Program:

BOP's

0-300' FWG 8.6-9.2
300-1750' FWG 8.4-8.6
1750-4760' FW 8.4
4760-8000' Cut BW 8.6-9.2
8000-8700' Cut BW 8.8-9.5

Type II-C 300-1750'
Type II-B 1750-8700'

Gas is not dedicated to a purchaser

APPROVAL VALID FOR 180 DAYS
PERMIT EXPIRES 10-2-82
UNLESS DRILLING UNDERWAY

Posted ID-1
API + NL Book
4-2-82

IN ABOVE SPACE DESCRIBE PROPOSED PROGRAM; IF PROPOSAL IS TO DEEPEN OR PLUG BACK, GIVE DATA ON PRESENT PRODUCTIVE ZONE AND PROPOSED NEW PRODUCTIVE ZONE. GIVE BLOWOUT PREVENTER PROGRAM, IF ANY.

I hereby certify that the information above is true and complete to the best of my knowledge and belief.

Signed Melba Knippling Title Unit Head Date March 29, 1982
(This space for State Use)

APPROVED BY Melba Knippling TITLE OIL AND GAS INSPECTOR DATE APR 2 1982

CONDITIONS OF APPROVAL, IF ANY:

Notify N.M.O.C.C. in sufficient
time to witness cementing
the 8 5/8" casing

Federal Lse. No. _____ All distances must be from the outer boundaries of the Section.

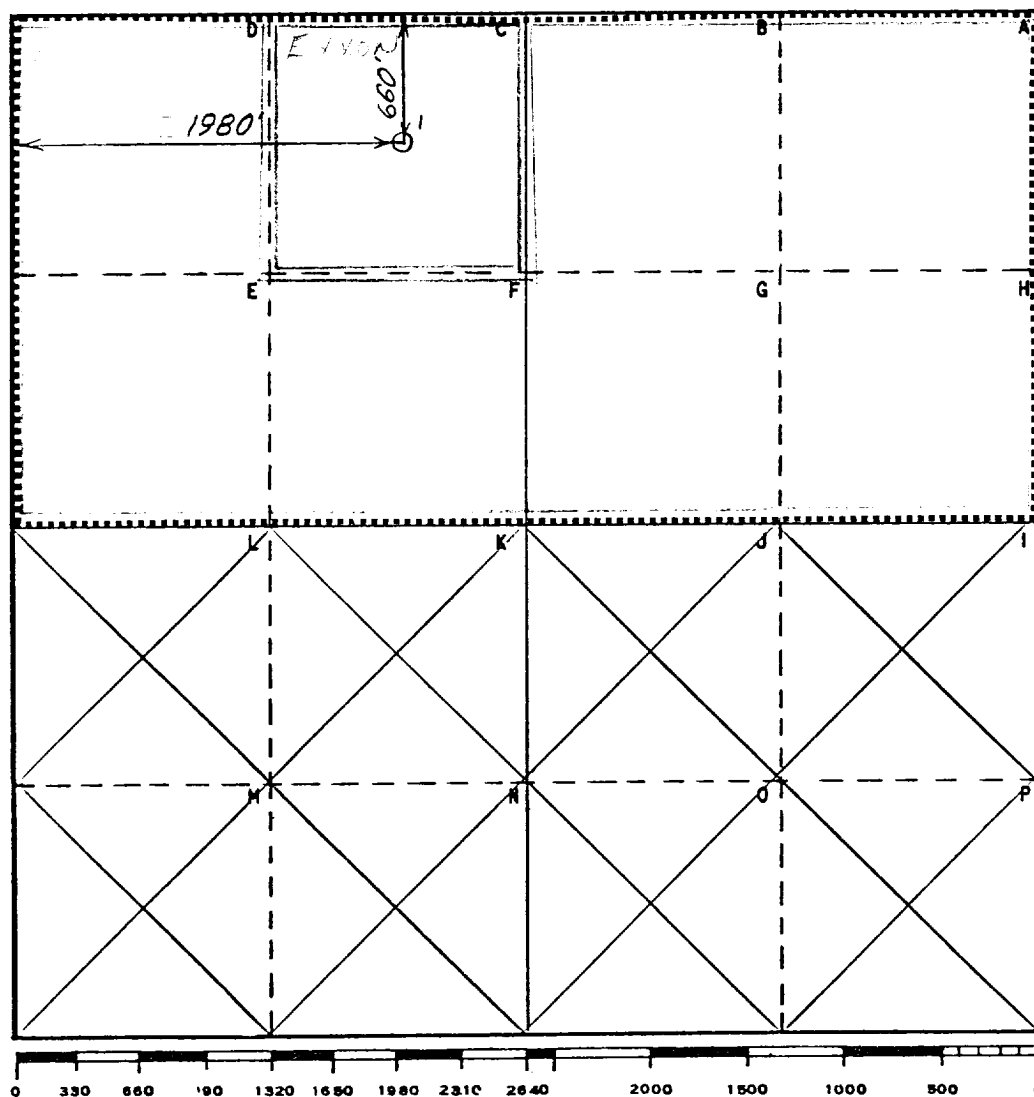
Operator Exxon Corporation		Lease NEW MEXICO "DE" STATE ^{Cons.} CONS.		Well No. 1
Unit Letter C	Section 19	Township 19 SOUTH	Range 24 EAST	County EDDY
Actual Footage Location of Well: 660 feet from the NORTH line and 1980 feet from the WEST line				
Ground Level Elev. 3805'	Producing Formation MORROW (GAS)	Pool Siegrest Draw Wallow UNDESIGNATED ANTELOPE SINK	Dedicated Acreage: 320.9 Acres	

1. Outline the acreage dedicated to the subject well by colored pencil or hachure marks on the plat below.
2. If more than one lease is dedicated to the well, outline each and identify the ownership thereof (both as to working interest and royalty).
3. If more than one lease of different ownership is dedicated to the well, have the interests of all owners been consolidated by communitization, unitization, force-pooling, etc?

☒ Yes ☐ No If answer is "yes," type of consolidation CONSOLIDATION PENDING

If answer is "no," list the owners and tract descriptions which have actually been consolidated. (Use reverse side of this form if necessary.) _____

No allowable will be assigned to the well until all interests have been consolidated (by communitization, unitization, forced-pooling, or otherwise) or until a non-standard unit, eliminating such interests, has been approved by the Commission.



CERTIFICATION

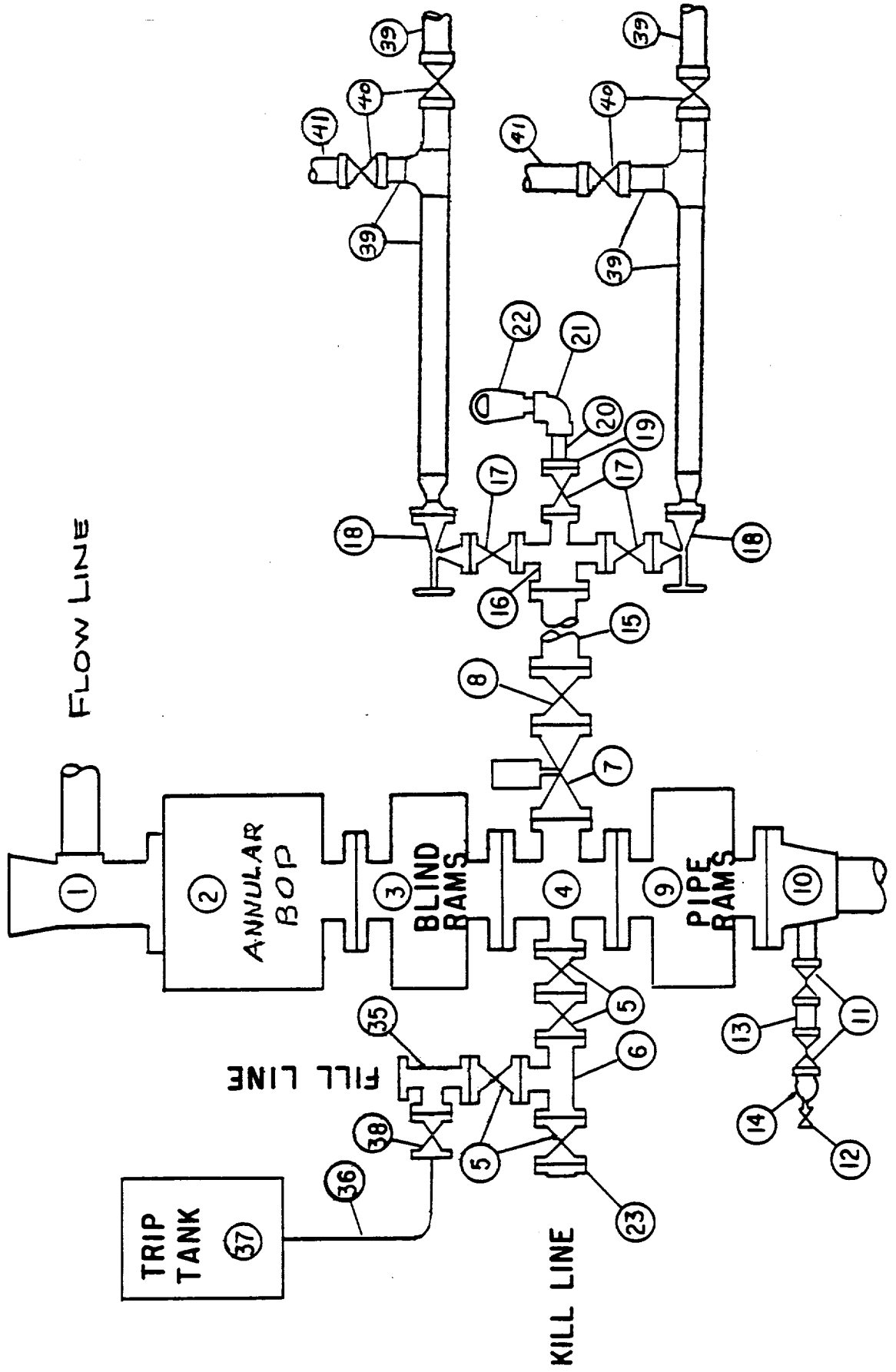
I hereby certify that the information contained herein is true and complete to the best of my knowledge and belief.

Name
Melba Knippling
Position
UNIT HEAD
Company
Exxon Corporation
Box 1600 Midland, Texas
Date
3-29-82

I hereby certify that the well location shown on this plat was plotted from field notes of actual surveys made by me or under my supervision, and that the same is true and correct to the best of my knowledge and belief.

Date Surveyed
2-27-82
Registered Professional Engineer and/or Land Surveyor
H. S. Westingfield
Certificate No.
1382

MIDLAND DRILLING ORGANIZATION BLOWOUT PREVENTER SPECIFICATION TYPE II - C



BLOWOUT PREVENTER SPECIFICATION
EQUIPMENT DESCRIPTION

TYPE II-C

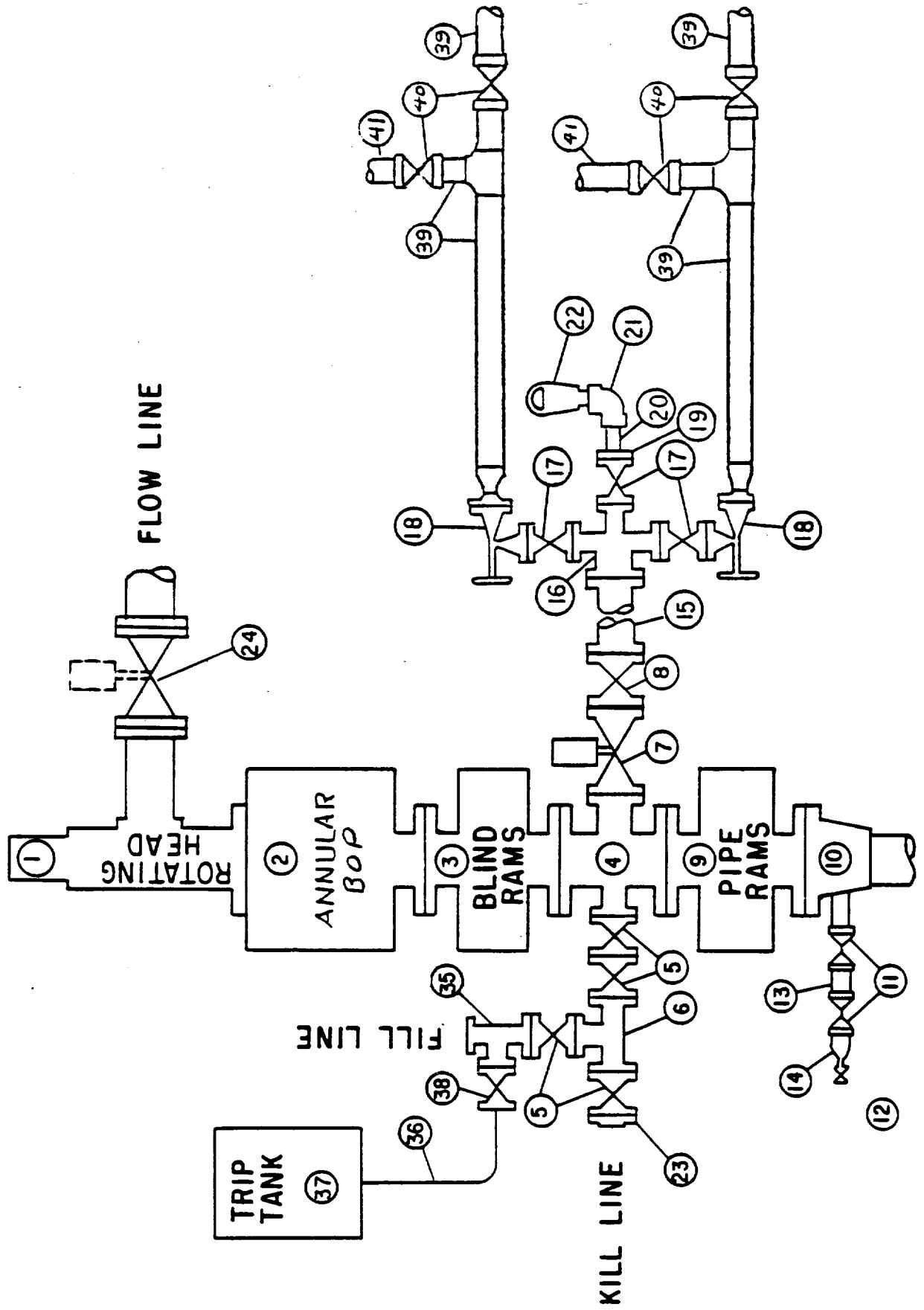
All equipment should be at least 3000 psi WP or higher unless otherwise specified.

1. Bell nipple.
2. Hydril or Shaffer bag type preventer.
3. Ram type pressure operated blowout preventer with blind rams.
4. Flanged spool with one 4-inch and one 2-inch (minimum) outlet.
5. 2-inch (minimum) flanged plug or gate valve.
6. 2-inch by 2-inch by 2-inch (minimum) flanged tee.
7. 4-inch pressure operated gate valve.
8. 4-inch flanged gate or plug valve.
9. Ram type pressure operated blowout preventer with pipe rams.
10. Flanged type casing head with one side outlet (furnished by Exxon).
11. 2-inch threaded (or flanged) plug or gate valve (furnished by Exxon).
Flanged on 5000# WP, threaded on 3000# WP or less.
12. Needle valve (furnished by Exxon).
13. 2-inch nipple (furnished by Exxon).
14. Tapped bull plug (furnished by Exxon).
15. 4-inch flanged spacer spool.
16. 4-inch by 2-inch by 2-inch by 2-inch flanged cross.
17. 2-inch flanged plug or gate valve.
18. 2-inch flanged adjustable choke.
19. 2-inch threaded flange.
20. 2-inch XXH nipple.
21. 2-inch forged steel 90° Ell.
22. Cameron (or equal.) threaded pressure gage.
23. Threaded flange.
35. 2-inch flanged tee.
36. 3-inch (minimum) hose. (Furnished by Exxon).
37. Trip tank. (Furnished by Exxon).
38. 2-inch flanged plug or gate valve.
39. 2-1/2-inch pipe, 300' to pit, anchored.
40. 2-1/2-inch SE valve.
41. 2-1/2-inch line to steel pit or separator.

NOTES:

1. Items 3, 4 and 9 may be replaced with double ram type preventer with side outlets between the rams.
2. The two valves next to the stack on the fill and kill line to be closed unless drill string is being pulled.
3. Kill line is for emergency use only. This connection shall not be used for filling.
4. Replacement pipe rams and blind rams shall be on location at all times.
5. Only type U, LWS and QRC ram type preventers with secondary seals are acceptable for 5000 psi WP and higher BOP stacks.
6. Type E ram-type BOP's with factory modified side outlets may be used on 3000 psi or lower WP BOP stacks.

BLOWOUT PREVENTER SPECIFICATION TYPE II - B



BLOWOUT PREVENTER SPECIFICATION.
EQUIPMENT DESCRIPTION

TYPE II-B

All equipment should be at least 3000 psi WP or higher unless otherwise specified.

1. Rotating BOP.
2. Hydril or Shaffer bag type preventer.
3. Ram type pressure operated blowout preventer with blind rams.
4. Flanged spool with one 4-inch and one 2-inch (minimum) outlet.
5. 2-inch (minimum) flanged plug or gate valve.
6. 2-inch by 2-inch by 2-inch (minimum) flanged tee.
7. 4-inch pressure operated gate valve.
8. 4-inch flanged gate or plug valve.
9. Ram type pressure operated blowout preventer with pipe rams.
10. Flanged type casing head with one side outlet (furnished by Exxon).
11. 2-inch threaded (or flanged) plug or gate valve (furnished by Exxon).
Flanged on 5000# WP, threaded on 3000# WP or less.
12. Needle valve (furnished by Exxon).
13. 2-inch nipple (furnished by Exxon).
14. Tapped bull plug (furnished by Exxon).
15. 4-inch flanged spacer spool.
16. 4-inch by 2-inch by 2-inch by 2-inch flanged cross.
17. 2-inch flanged plug or gate valve.
18. 2-inch flanged adjustable choke.
19. 2-inch threaded flange.
20. 2-inch XXH nipple.
21. 2-inch forged steel 90° Ell.
22. Cameron (or equal.) threaded pressure gage.
23. Threaded flange.
24. 6-inch manual or pressure operated gate valve.
35. 2-inch flanged tee.
36. 3-inch (minimum) hose. (Furnished by Exxon).
37. Trip tank. (Furnished by Exxon).
38. 2-inch flanged plug or gate valve.
39. 2-1/2-inch pipe, 300' to pit, anchored.
40. 2-1/2-inch SE valve.
41. 2-1/2-inch line to steel pit or separator.

NOTES:

1. Items 3, 4 and 9 may be replaced with double ram type preventer with side outlets between the rams.
2. The two valves next to the stack on the fill and kill line to be closed unless drill string is being pulled.
3. Kill line is for emergency use only. This connection shall not be used for filling.
4. Replacement pipe rams and blind rams shall be on location at all times.
5. Only type U, LWS and QRC ram type preventers with secondary seals are acceptable for 5000 psi WP and higher BOP stacks.
6. Type E ram-type BOP's with factory modified side outlets may be used on 3000 psi and lower WP BOP stacks.