

NM OIL CONS. COMMISSION
Dra' DD
ARTESIA DISTRICT
DEPARTMENT OF THE INTERIOR
GEOLOGICAL SURVEYSUBMIT IN TWO COPIES
(Other instructions on
reverse side)Form approved.
Budget Bureau No. 42-R1425.

APPLICATION FOR PERMIT TO DRILL, DEEPEN, OR PLUG BACK

1a. TYPE OF WORK

DRILL ☒DEEPEN ☐PLUG BACK ☐

b. TYPE OF WELL

OIL
WELL ☐GAS
WELL ☒

OTHER

SINGLE
ZONE ☐MULTIPLE
ZONE ☐

2. NAME OF OPERATOR

Yates Petroleum Corporation

3. ADDRESS OF OPERATOR

207 S. 4th, Artesia, New Mexico 88210

4. LOCATION OF WELL (Report location clearly and in accordance with any State requirements.)

At surface

2600' FNL and 660' FWL

At proposed prod. zone

same

14. DISTANCE IN MILES AND DIRECTION FROM NEAREST TOWN OR POST OFFICE*

36 miles SW of Artesia, New Mexico 88210

15. DISTANCE FROM PROPOSED*

LOCATION TO NEAREST

PROPERTY OR LEASE LINE, FT.

(Also to nearest drlg. unit line, if any)

660'

16. NO. OF ACRES IN LEASE

360

17. NO. OF ACRES ASSIGNED
TO THIS WELL

320

18. DISTANCE FROM PROPOSED LOCATION*

TO NEAREST WELL, DRILLING, COMPLETED,
OR APPLIED FOR, ON THIS LEASE, FT.

19. PROPOSED DEPTH

9300'

20. ROTARY OR CABLE TOOLS

Rotary

21. ELEVATIONS (Show whether DF, RT, GR, etc.)

3686.0' GL

22. APPROX. DATE WORK WILL START*

ASAP

23.

PROPOSED CASING AND CEMENTING PROGRAM

SIZE OF HOLE	SIZE OF CASING	WEIGHT PER FOOT	SETTING DEPTH	QUANTITY OF CEMENT
17 1/2"	13 3/8"	48# J-55	275'	300 sx circulated
12 1/4"	8 5/8"	24# J-55	1100'	800 sx circulated
7 7/8"	5 1/2" or 4 1/2"	15.5 - 17#	TD	600 sx
		9.5 - 11.6#		

We propose to drill and test the Morrow and intermediate formations. Approximately 275' of surface casing will be set to shut off gravel and caving, and intermediate casing will be set 100' below the Artesian Water Zone. If commercial, will run 4 1/2" or 5 1/2" with 600' cement cover, will perforate and stimulate as needed for production.

MUD PROGRAM: FW gel and LCM to 1200', FW to 3400', 2% KCL water to 6300', starch-driskpak-KCL to 7800', flosal-driskpak-KCL to TD.

BOP PROGRAM: BOP's and hydril will be installed on the 8 5/8" casing and tested daily. Yellow Jacket prior to drilling Wolfcamp.

GAS NOT DEDICATED.

IN ABOVE SPACE DESCRIBE PROPOSED PROGRAM: If proposal is to deepen or plug back, give data on present productive zone and proposed new productive zone. If proposal is to drill or deepen directionally, give pertinent data on subsurface locations and measured and true vertical depths. Give blowout preventer program, if any.

24.

SIGNED

Cy Cowan

TITLE Regulatory Coordinator

DATE 6/15/82

(This space for Federal or State office use)

PERMIT NO.

(Orig. Sgd.) GEORGE H. STEWART

APPROVAL DATE

APPROVED BY

JUL 13 1982

TITLE

CONDITIONS OF APPROVAL, IF ANY:

NM OCS APPROVAL NON-STD

JAMES A. CULHAM
DISTRICT SUPERVISOR

Loc.

RECEIVED
JUN 17 1982OIL & GAS
U.S. GEOLOGICAL SURVEY
ROSWell, NEW MEXICO

NEW MEXICO OIL CONSERVATION COMMISSION
WELL LOCATION AND ACREAGE DEDICATION PLAT

Form C-102
Supersedes C-128
Effective 1-1-81

All distances must be from the outer boundaries of the Section.

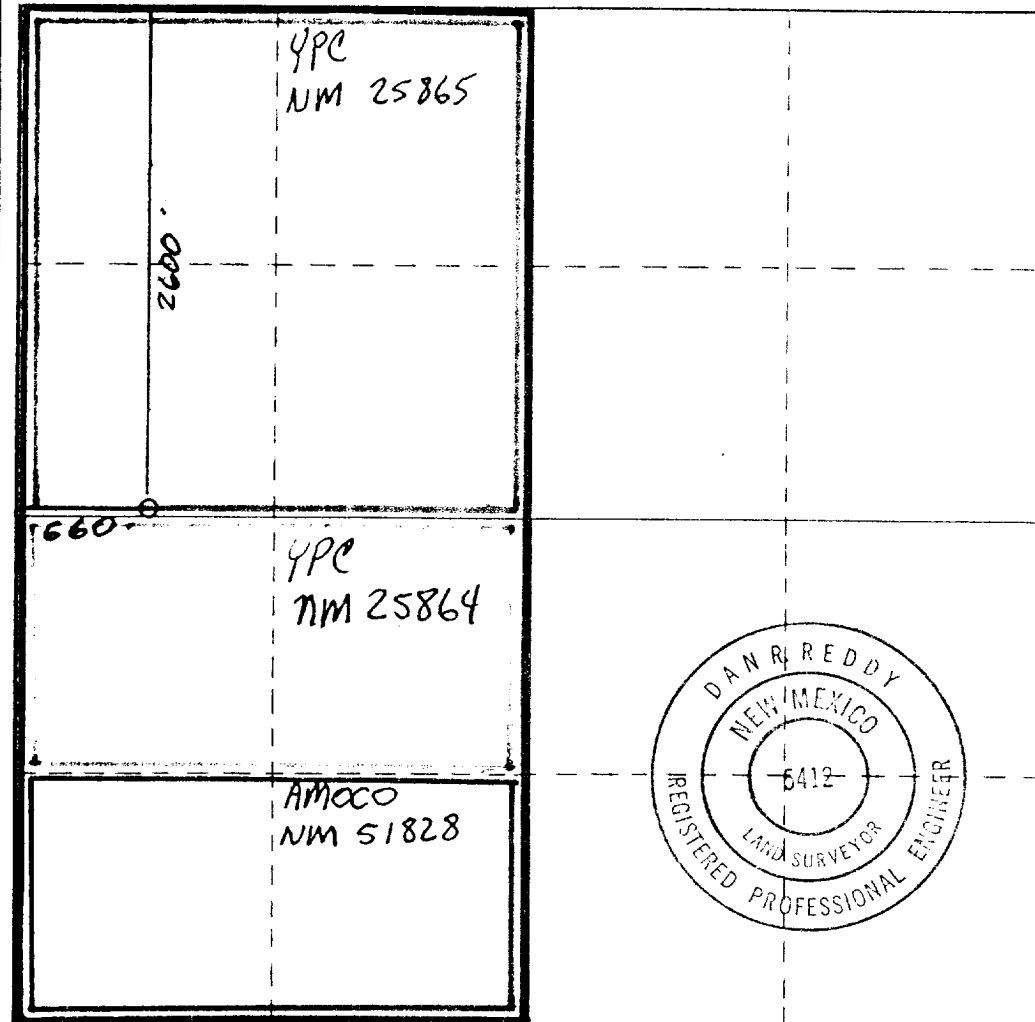
Operator YATES PETROLEUM CORPORATION			Lease Eng TX Federal		Well No. 1
Unit Letter E	Section 35	Township 19 South	Range 24 East	County Eddy	
Actual Footage Location of Well:					
2600 feet from the North line and		660 feet from the West line			
Ground Level Elev. 3686.	Producing Formation Morrow	Pool Under Morrow	Dedicated Acreage 320		

1. Outline the acreage dedicated to the subject well by colored pencil or hatchure marks on the plat below.
2. If more than one lease is dedicated to the well, outline each and identify the ownership thereof (both as to working interest and royalty).
3. If more than one lease of different ownership is dedicated to the well, have the interests of all owners been consolidated by communitization, unitization, force-pooling, etc?

☐ Yes ☒ No If answer is "yes," type of consolidation to be communitized

If answer is "no," list the owners and tract descriptions which have actually been consolidated. (Use reverse side of this form if necessary.) _____

No allowable will be assigned to the well until all interests have been consolidated (by communitization, unitization, forced-pooling, or otherwise) or until a non-standard unit, eliminating such interests, has been approved by the Commission.



CERTIFICATION

I hereby certify that the information contained herein is true and complete to the best of my knowledge and belief.

Cy Cowan

Name
Cy Cowan

Position
Regulatory Coordinator

Company
Yates Petroleum Corp.

Date
6/15/82

I hereby certify that the well location shown on this plat was plotted from field notes of actual surveys made by me or under my supervision, and that the same is true and correct to the best of my knowledge and belief.

Date Surveyed
March 31, 1982

Registered Professional Engineer and/or Land Surveyor

Dan R. Reddy

Certificate No.

NM PE&LS #5412

YATES PETROLEUM CORPORATION
Wing "TX" Federal #1
2600' FNL and 660' FWL
Sec. 35-T19S-R24E
Eddy County, New Mexico

In conjunction with Form 9-331C, Application for Permit to Drill subject well, Yates Petroleum Corporation submits the following ten items of pertinent information in accordance with USGS requirements.

1. The geologic surface formation is quaternary alluvium.
2. The estimated tops of geologic markers are as follows:

San Andres	425'	Morrow Clastics	8935'
Glorieta	1786'	Chester Lime	9220'
Abo	3981'	TD	9300'
Wolfcamp Lime	5069'		
Lower Canyon	7460'		
Strawn	8117'		
Atoka	8620'		

3. The estimated depths at which anticipated water, oil or gas formations are expected to be encountered:

Water: Approximately 200' - 250'

Oil or Gas: 8970'

4. Proposed Casing Program: See Form 9-331C.
5. Pressure Control Equipment: See Form 9-331C and Exhibit B.
6. Mud Program: See Form 9-331C.
7. Auxiliary Equipment: Kelly Cock; pit level indicators and flow sensor equipment; sub with full-opening valve on floor, drill pipe connection.
8. Testing, Logging and Coring Program:
Samples: 10' out from under surface casing.
DST's: As warranted.
Logging: CNL-FDC TD to casing w/GR-CNL to surface,
~~XXXXXX~~ DLL-TD to casing w/min RxO on bottom 200.
9. No abnormal pressures or temperatures are anticipated.
10. Anticipated starting date: As soon as possible after approval.

Rotating head if necessary
Fill up Line

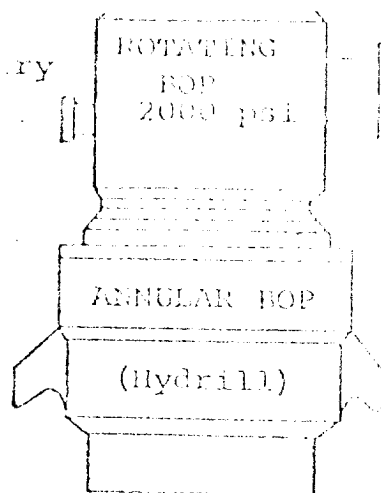
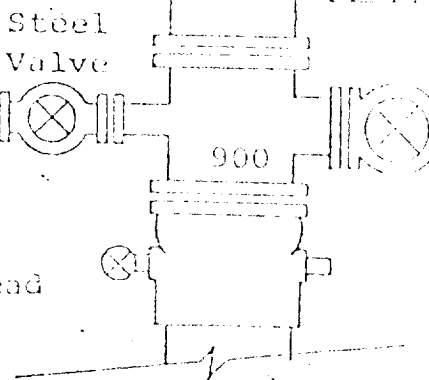
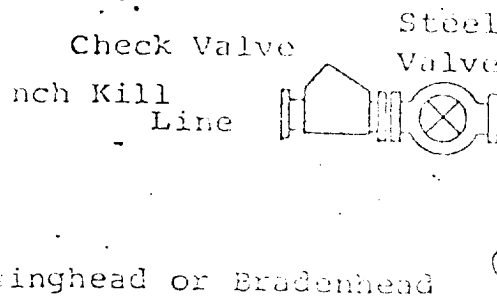
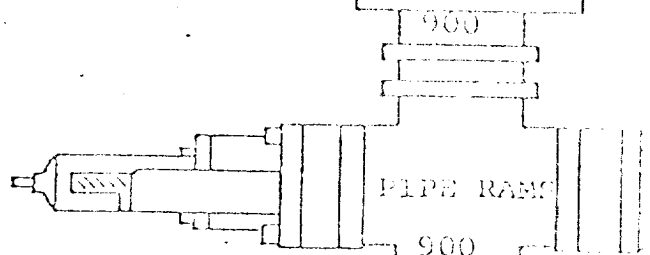
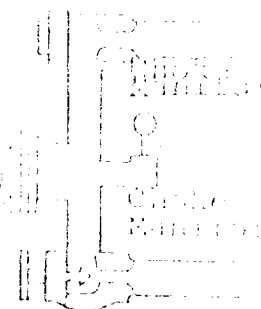


Exhibit F.



Hydraulically Operated B.O.P.'s

4 inch line



Wellhead or Bradenhead

THE FOLLOWING CONSTITUTE MINIMUM BLOWOUT PREVENTER REQUIREMENTS:

1. All preventers to be hydraulically operated with secondary manual control installed prior to drilling out from under casing.
2. Choke outlet to be a minimum of 4" diameter.
3. Kill line to be of all steel construction of 2" minimum diameter.
4. All connections from operating manifold to preventers to be all steel, hole or tube a minimum of one inch in diameter.
5. The available closing pressure shall be at least 15% in excess of that required with sufficient volume to operate the B.O.P.'s.
6. All connections to and from preventer to have a pressure rating equivalent to that of the B.O.P.'s.
7. Inside blowout preventer to be available on rig floor.
8. Operating controls located a safe distance from the rig floor.
9. Hole must be kept filled on trips below intermediate casing. Operator not responsible for blowouts resulting from not keeping hole full.
10. D. P. float must be installed and used below zone of first gas intrusion.

EXHIBIT C

