

NO. OF COPIES RECEIVED	4
DISTRIBUTION	
SANTA FE	1
FILE	
U.S.G.S.	1
LAND OFFICE	1
OPERATOR	

NEW MEXICO OIL CONSERVATION COMMISSION

RECEIVED

JUL 16 1982

O. C. D.

Form C-101
Revised 1-1-81

5A. Indicate Type of Lease

STATE ☒ FEE ☐

5. State Oil & Gas Lease No.

L-4053

APPLICATION FOR PERMIT TO DRILL, DEEPEN, OR PLUG BACK

1A. Type of Work

DRILL ☒

DEEPEN ☐

PLUG BACK ☐

7. Unit Agreement Name

8. Farm or Lease Name

Roy

9. Well No.

#1

10. Field and Pool, or Wildcat

Undesignated-Grayburg SA

2. Name of Operator

Collier Energy, Inc.

3. Address of Operator

P. O. Box 798 Artesia, New Mexico 88210

4. Location of Well

UNIT LETTER H LOCATED 1980 FEET FROM THE North LINE

AND 660 FEET FROM THE East LINE OF SEC. 23 TWP. 19S RGE. 27E NMPM

12. County

Eddy

19. Proposed Depth

2000'

19A. Formation

Lovington Sand

20. Rotary or C.T.

C.T.

21. Elevations (Show whether DF, RT, etc.)

3452'

21A. Kind & Status Plug. Bond

Statewide

21B. Drilling Contractor

C & J Drilling

22. Approx. Date Work will start

7-23-82

23.

PROPOSED CASING AND CEMENT PROGRAM

SIZE OF HOLE	SIZE OF CASING	WEIGHT PER FOOT	SETTING DEPTH	SACKS OF CEMENT	EST. TOP
10 3/4"	8 5/8"	20 #	280'	100 sxs. Cl. "C"	Surface
8"	4 1/2"	9.5 #	2000'	250 sxs.	Surface

Plan to spud Undesignated Grayburg San Andres well on July 23, 1982, with 10 3/4" bit, set surface at 280' with 8 5/8" pipe. Circulate to surface then drill out 8" bit to T.D. Will run 4 1/2" casing if successful and circulate cement to surface.

Plotted ID-1
API & NL Book
7-23-82

APPROVAL VALID FOR 180 DAYS
PERMIT EXPIRES 1-30-83
UNLESS DRILLING UNDERWAY

IN ABOVE SPACE DESCRIBE PROPOSED PROGRAM: IF PROPOSAL IS TO DEEPEN OR PLUG BACK, GIVE DATA ON PRESENT PRODUCTIVE ZONE AND PROPOSED NEW PRODUCTIVE ZONE. GIVE BLOWOUT PREVENTER PROGRAM, IF ANY.

I hereby certify that the information above is true and complete to the best of my knowledge and belief.

Signed Steve Kelley Title Production Clerk Date 7-16-82

(This space for State Use)

APPROVED BY Mike Walker TITLE OIL AND GAS INSPECTOR DATE JUL 20 1982

CONDITIONS OF APPROVAL, IF ANY:

Notify N.M.O.C.C. in sufficient
time to witness cementing
the 556 casing

All distances must be from the corner boundaries of the section.

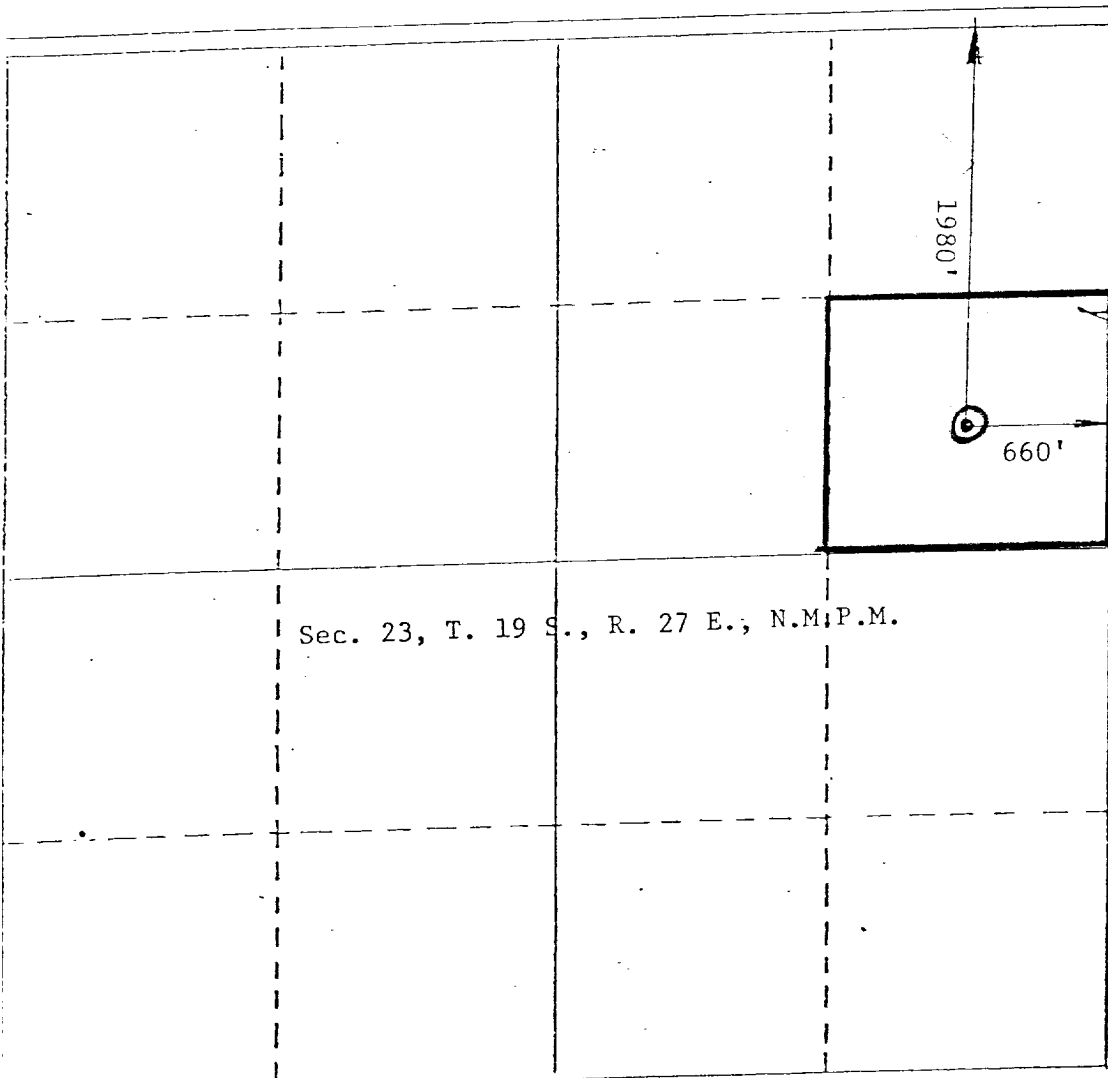
Operator Collier Energy		Lease Roy		Well No. 1	
Unit Letter H	Section 23	Township 19 South	Range 27 East	County Eddy	
Actual Postage Location of Well: 1980 feet from the North line and 660 feet from the East line					
Ground Level Elev. 3452	Producing Formation Lovington Sand		Pool Grayburg-San Andres		Dedicated Acreage: 40 Acres

1. Outline the acreage dedicated to the subject well by colored pencil or hatchure marks on the plat below.
2. If more than one lease is dedicated to the well, outline each and identify the ownership thereof (both as to working interest and royalty).
3. If more than one lease of different ownership is dedicated to the well, have the interests of all owners been consolidated by communitization, unitization, force-pooling, etc?

☐ Yes ☐ No If answer is "yes," type of consolidation _____

If answer is "no," list the owners and tract descriptions which have actually been consolidated. (Use reverse side of this form if necessary.) _____

No allowable will be assigned to the well until all interests have been consolidated (by communitization, unitization, forced-pooling, or otherwise) or until a non-standard unit, eliminating such interests, has been approved by the Division



CERTIFICATION

I hereby certify that the information contained herein is true and complete to the best of my knowledge and belief.

Name

Position

President

Company

Collier Energy, Inc.

Date

July 16, 1982

I hereby certify that the well location shown on this plat was plotted from field notes of actual surveys made by me or under my supervision, and that the same is true and correct to the best of my knowledge and belief.

Date Surveyed

July 12, 1982

Registered Professional Engineer and/or Land Surveyor

John D. Jaquess, L.E. & L.S.

Certificate No.

6290