

All distances must be from the outer boundaries of the Section.

RECEIVED

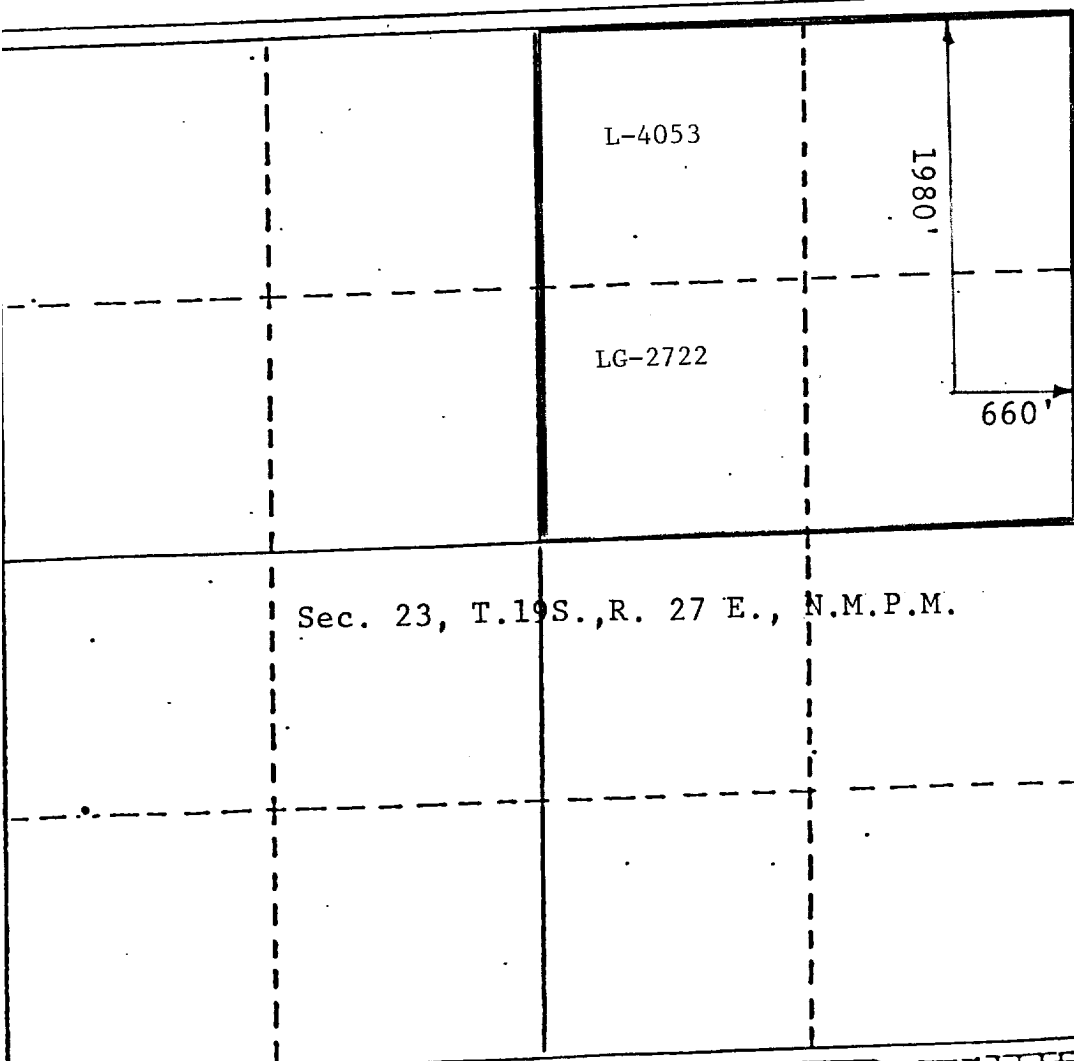
| | | | | | |
|---|---|---|-----------------------------|--------------------------------------|--|
| Operator Collier Energy | | Lease Roy | | Section No. 1 | |
| Well Letter H | | Section 23 | Township 19 South | Range 27 East | County Eddy |
| Actual Postage Location of Well: 1980 feet from the North line and 660 feet from the East line | | | | | MAY 31 1983 O. C. D. ARTESIA OFFICE |
| Ground Level Elev. 3452 | Producing Formation G-SF Lovington Sand | Pool Queen Lake Und. Millman-Grayburg | | Dedicated Acres: 160 Acres | |

1. Outline the acreage dedicated to the subject well by colored pencil or hatchure marks on the plat below.
2. If more than one lease is dedicated to the well, outline each and identify the ownership thereof (both as to working interest and royalty).
3. If more than one lease of different ownership is dedicated to the well, have the interests of all owners been consolidated by communitization, unitization, force-pooling, etc?

☒ Yes ☐ No If answer is "yes," type of consolidation NM communitization

If answer is "no," list the owners and tract descriptions which have actually been consolidated. (Use reverse side of this form if necessary.)

No allowable will be assigned to the well until all interests have been consolidated (by communitization, unitization, forced-pooling, or otherwise) or until a non-standard unit, eliminating such interests, has been approved by the Division.



CERTIFICATION

I hereby certify that the information contained herein is true and complete to the best of my knowledge and belief.

Name
Charlie Hall
Position
Production Clerk
Company
Collier Energy, Inc.
Date
May 24, 1983

I hereby certify that the well location shown on this plat was plotted from field notes of actual surveys made by me or under my supervision, and that the same is true and correct to the best of my knowledge and belief.

JOHN D. JAQUES
Date Surveyed
July 12, 1982
Registered Professional Engineer
and State Surveyor
John D. Jaques, P.E. & L.S.
Certificate No.
6290