

STATE OF NEW MEXICO
ENERGY AND MINERALS DEPARTMENT

OIL CONSERVATION DIVISION

P. O. BOX 2088

SANTA FE, NEW MEXICO 87501

AUG 26 1982

O. C. D.

ARTESIA, OFFICE

Form C-101
Revised 10-1-78

NO. OF COPIES RECEIVED	
DISTRIBUTION	
SANTA FE	1
FILE	1
U.S.G.S.	2
LAND OFFICE	
OPERATION	

APPLICATION FOR PERMIT TO DRILL, DEEPEN, OR PLUG BACK

Type of Work

Type of Well
 DRILL ☒ DEEPEN ☐ PLUG BACK ☐
 GAS ☒ OIL ☐ OTHER ☐
 SINGLE ZONE ☒ MULTIPLE ZONE ☐

7. Unit Agreement Name

8. Name of Lessee Name

Monsanto State

9. Well No.

1

10. Field and Prod. or Well No.

Unit. E. Millman SR

Marbob Energy Corporation

Address of Operator

P.O. Drawer 217, Artesia, N.M. 88210

Section 1650 UNIT LETTER O LOCATED 986 FEET FROM THE South

1650 East 21 19S 28E

Eddy

1200'

Seven Rivers

Cable tool

3398.0' GR

Statewide active

Jenkins Bros. Drllg. Co.

8/27/82

FEET TO DEPTH OF PROPOSED DRILLING

SIZE OF HOLE	DEPTH OF HOLE	DEPTH OF HOLE	DEPTH OF HOLE	DEPTH OF HOLE	DEPTH OF HOLE
12"	8 5/8"	24#	340'	100	Circ.
7 7/8"	4 1/2"	10.50#	1200'	300	Circ.

We propose to drill to 1200' to test the Seven Rivers formation. We will drill a 12" hole to 340', if water is encountered we will set 8 5/8" 24# new casing, cement and circulate; if water is not encountered we will reduce the hole to 7 7/8" and continue drilling to TD, run 4 1/2" 10.50# new casing, cement and circulate. We do not anticipate gas at this depth and will not set up a blowout preventer program at this time.

APPROVAL VALID FOR 170 DAYS
 PERMIT EXPIRES 3-2-83
 UNLESS DRILLING UNDERWAY

NOTE: SPACE DESCRIBE PROPOSED PROGRAM IF PROPOSAL IS TO DEEPEN OR PLUG BACK, GIVE DATA ON PRESENT PRODUCTIVE ZONE AND PROPOSED NEW PRODUCTIVE ZONE. GIVE BLOWOUT PREVENTER PROGRAM, IF ANY.

I hereby certify that the information above is true and complete to the best of my knowledge and belief.

Carolyn Davis Title Production Clerk Date 8/26/82

(This space for State Use)

LOVED BY Mr. Williams TITLE OIL AND GAS INSPECTOR

DATE AUG 31 1982

REASONS OF APPROVAL, IF ANY:

**NEW MEXICO OIL CONSERVATION COMMISSION
WELL LOCATION AND ACREAGE DEDICATION PLAT**

Form C-102
Supersedes C-128
Effective 1-1-65

All distances must be from the outer boundaries of the Section

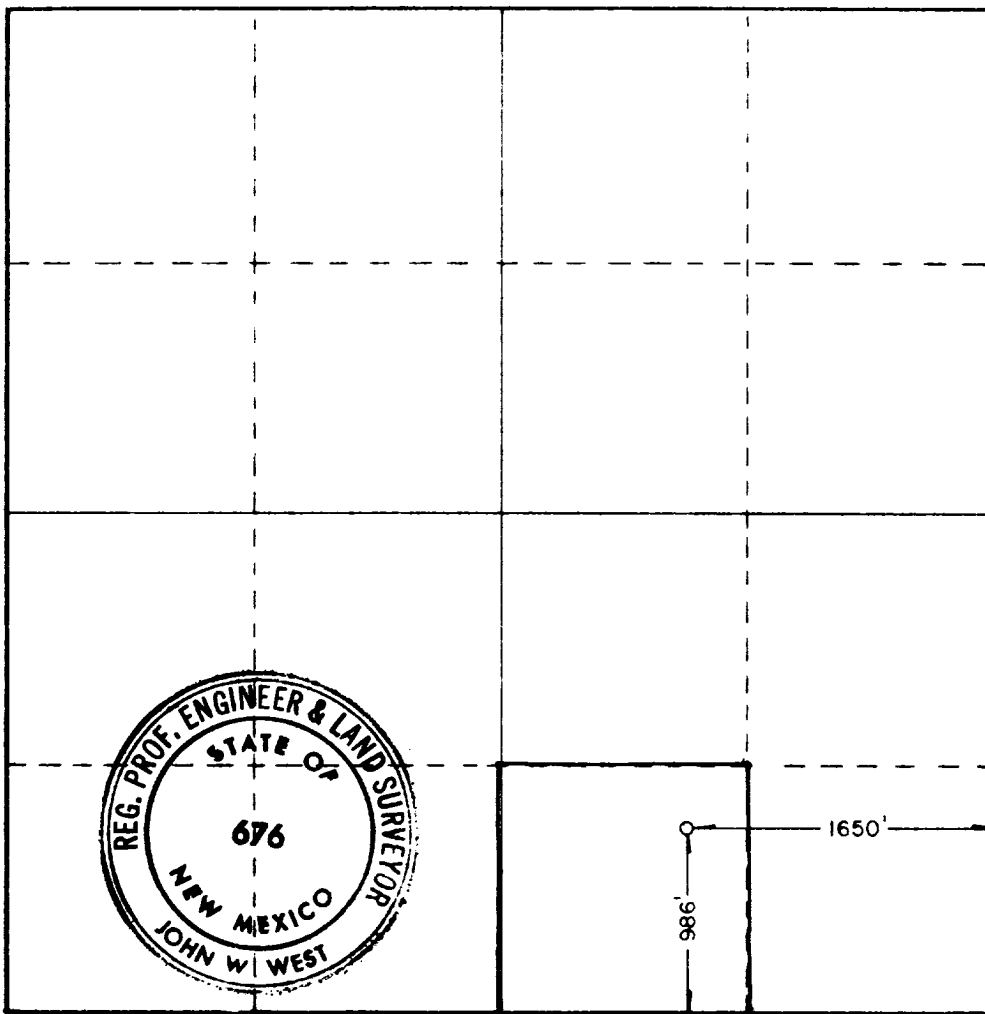
Operator Marbob Energy Corp.			Lease Monsanto State		Well No. 1
Unit Letter 0	Section 21	Township 19 South	Range 28 East	County Eddy	
Actual Footage Location of Well: 986 feet from the south line and 1650 feet from the east line					
Ground Level Elev. 3398.0'	Producing Formation Seven Rivers		Pool Und. E. Millman SR		Dedicated Acreage: 40 Acres

1. Outline the acreage dedicated to the subject well by colored pencil or hatchure marks on the plat below.
2. If more than one lease is dedicated to the well, outline each and identify the ownership thereof (both as to working interest and royalty).
3. If more than one lease of different ownership is dedicated to the well, have the interests of all owners been consolidated by communitization, unitization, force-pooling, etc?

☐ Yes ☐ No If answer is "yes," type of consolidation _____

If answer is "no," list the owners and tract descriptions which have actually been consolidated. (Use reverse side of this form if necessary.) _____

No allowable will be assigned to the well until all interests have been consolidated (by communitization, unitization, forced-pooling, or otherwise) or until a non-standard unit, eliminating such interests, has been approved by the Commission.



CERTIFICATION

I hereby certify that the information contained herein is true and complete to the best of my knowledge and belief.

Carolyn Orris

Name

Carolyn Orris

Position

Production Clerk

Company

Marbob Energy Corporation

Date

8/26/82

I hereby certify that the well location shown on this plat was plotted from field notes of actual surveys made by me or under my supervision, and that the same is true and correct to the best of my knowledge and belief.

Date Surveyed

8-2-82

Registered Professional Engineer and/or Land Surveyor

John W. West

Certificate No. **JOHN W. WEST 676**
PATRICK A. ROMERO 6868
Ronald J. Eldon 3239

