

30-015-24465

NO. OF COPIES RECEIVED	
DISTRIBUTION	
SANTA FE	<input checked="" type="checkbox"/>
FILE	<input checked="" type="checkbox"/>
U.S.G.S.	<input checked="" type="checkbox"/>
LAND OFFICE	<input checked="" type="checkbox"/>
OPERATOR	<input checked="" type="checkbox"/>

## NEW MEXICO OIL CONSERVATION COMMISSION

APR 25 1983

O. C. D.  
ARTESIA, OFFICEForm C-101  
Revised 1-1-83

5A. Indicate Type of Lease	
STATE <input checked="" type="checkbox"/>	FEE <input type="checkbox"/>
5. State Oil & Gas Lease No.	
LG-1199	

## APPLICATION FOR PERMIT TO DRILL, DEEPEN, OR PLUG BACK

1a. Type of Work			7. Unit Agreement Name		
b. Type of Well DRILL <input checked="" type="checkbox"/> DEEPEN <input type="checkbox"/> PLUG BACK <input type="checkbox"/> OIL WELL <input checked="" type="checkbox"/> GAS WELL <input type="checkbox"/> OTHER <input type="checkbox"/> SINGLE ZONE <input checked="" type="checkbox"/> MULTIPLE ZONE <input type="checkbox"/>			8. Farm or Lease Name		
2. Name of Operator Exxon Corporation			9. Well No. 1		
3. Address of Operator P. O. Box 1600, Midland, TX 79702			10. Field and Pool, or Wildcat Undesig. Winchester		
4. Location of Well UNIT LETTER <u>G</u> LOCATED <u>1980</u> FEET FROM THE <u>North</u> LINE AND <u>1980</u> FEET FROM THE <u>East</u> LINE OF SEC. <u>30</u> TWP. <u>19S</u> RGE. <u>29E</u> NMPM			12. County Eddy		
19. Proposed Depth 5000'			19A. Formation Bone Spring		20. Rotary or C.T. Rotary
21. Elevations (Show whether DF, RT, etc.) 3308' GR	21A. Kind & Status Plug. Bond Blanket	21B. Drilling Contractor Unknown	22. Approx. Date Work will start May 1983		

## 23. PROPOSED CASING AND CEMENT PROGRAM

SIZE OF HOLE	SIZE OF CASING	WEIGHT PER FOOT	SETTING DEPTH	SACKS OF CEMENT	EST. TOP
26"	20"	94.0#	40'	20 sx Read Mix	Surface
17 1/2"	13 3/8"	54.5#	300'	200 sx	Surface
11"	8 5/8"	24.0#	2950'	600 sx	Inside surface cs
7 7/8"	5 1/2"	14.0#	5000'	400 sx	2900'

## Mud Program:

0 - 300' \*FW 8.4 - 8.8 ppg  
300 - 5000' \*CBW 9.0 - 9.5 ppg

## BOP's

13 3/8" Type II-C 2000 psi  
8 5/8" Type II-C 2000 psi

Post FD-1  
4-29-83  
New Mex. & API

APPROVAL FOR 180 DAYS  
PERIOD ENDS 10-26-83  
UNLESS DRILLING UNDERWAY

IN ABOVE SPACE DESCRIBE PROPOSED PROGRAM: IF PROPOSAL IS TO DEEPEN OR PLUG BACK, GIVE DATA ON PRESENT PRODUCTIVE ZONE AND PROPOSED NEW PRODUCTIVE ZONE. GIVE BLOWOUT PREVENTER PROGRAM, IF ANY.

I hereby certify that the information above is true and complete to the best of my knowledge and belief.

Signed Melba Knippling Title Unit Head Date April 22, 1983  
(This space for State Use)

APPROVED BY W. H. N. N. N. TITLE OIL AND GAS INSPECTOR DATE APR 26 1983

CONDITIONS OF APPROVAL, IF ANY:

\* FW 300 2950

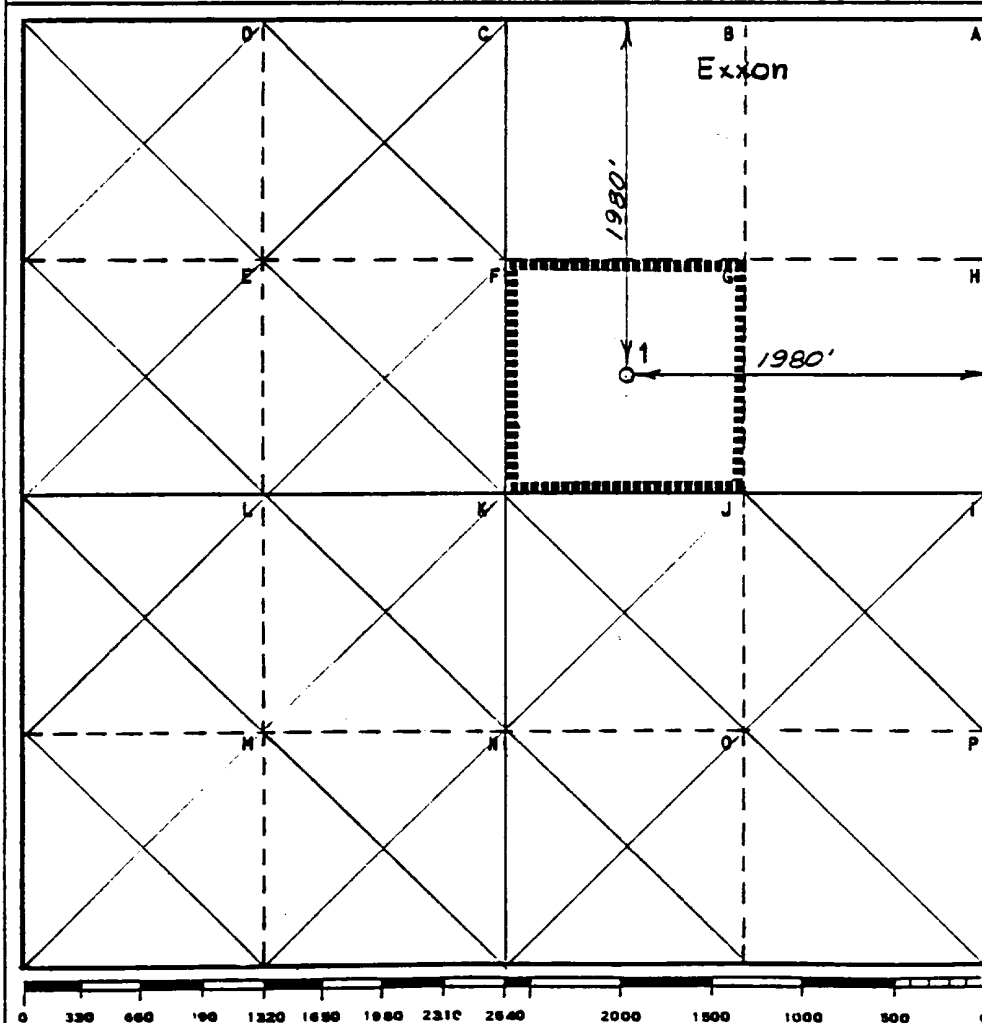
Operator Exxon Corporation			Lease New Mexico "DJ" State		Well No. 1
Unit Letter G	Section 30	Township 19S	Range 29E	County Eddy	
Actual Footage Location of Wells: 1980 feet from the North line and 1980 feet from the East line					
Ground Level Elev. 3308'	Producing Formation Bone Spring		Pool Undesignated Winchester		Dedicated Acreage 40 Acres

1. Outline the acreage dedicated to the subject well by colored pencil or hachure marks on the plat below.
2. If more than one lease is dedicated to the well, outline each and identify the ownership thereof (both as to working interest and royalty).
3. If more than one lease of different ownership is dedicated to the well, have the interests of all owners been consolidated by communitization, unitization, force-pooling, etc?

☐ Yes ☐ No If answer is "yes," type of consolidation \_\_\_\_\_

If answer is "no," list the owners and tract descriptions which have actually been consolidated. (Use reverse side of this form if necessary.) \_\_\_\_\_

No allowable will be assigned to the well until all interests have been consolidated (by communitization, unitization, forced-pooling, or otherwise) or until a non-standard unit, eliminating such interests, has been approved by the Commission.



#### CERTIFICATION

I hereby certify that the information contained herein is true and complete to the best of my knowledge and belief.

Name  
*Melva Kripling*  
Position  
UNIT HEAD

Company Exxon Corporation  
Box 1600 Midland, Texas

Date  
4-21-83

I hereby certify that the well location shown on this plat was plotted from field notes of actual surveys made by me or under my supervision, and that the same is true and correct to the best of my knowledge and belief.

Date Surveyed  
4-19-83

Registered Professional Engineer  
and/or Land Surveyor

*W. J. Richmond*  
Certificate No.  
6157

22 Miles SE of Artesia, New Mexico

C.E. Sec. File No. W-A-8071

BLOWOUT PREVENTER SPECIFICATION  
EQUIPMENT DESCRIPTION

TYPE II-C

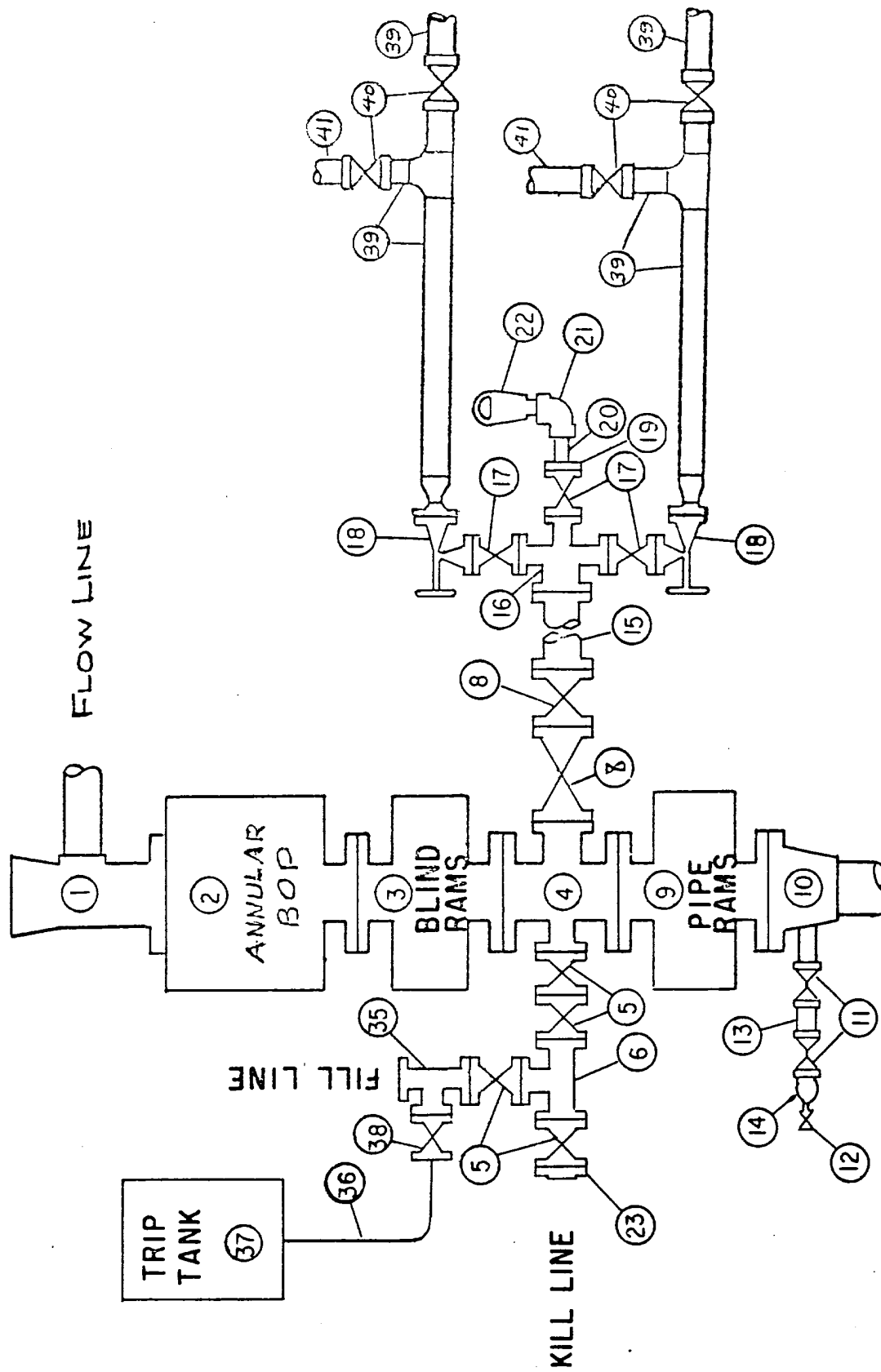
All equipment should be at least 2000 psi WP or higher unless otherwise specified.

1. Bell nipple.
2. Hydril or Shaffer bag type preventer.
3. Ram type pressure operated blowout preventer with blind rams.
4. Flanged spool with one 4-inch and one 2-inch (minimum) outlet.
5. 2-inch (minimum) flanged plug or gate valve.
6. 2-inch by 2-inch by 2-inch (minimum) flanged tee.
  
8. 4-inch flanged gate or plug valve.
9. Ram type pressure operated blowout preventer with pipe rams.
10. Flanged type casing head with one side outlet (furnished by Exxon).
11. 2-inch threaded (or flanged) plug or gate valve (furnished by Exxon).  
Flanged on 5000# WP, threaded on 3000# WP or less.
12. Needle valve (furnished by Exxon).
13. 2-inch nipple (furnished by Exxon).
14. Tapped bull plug (furnished by Exxon).
15. 4-inch flanged spacer spool.
16. 4-inch by 2-inch by 2-inch by 2-inch flanged cross.
17. 2-inch flanged plug or gate valve.
18. 2-inch flanged adjustable choke.
19. 2-inch threaded flange.
20. 2-inch XXH nipple.
21. 2-inch forged steel 90° Ell.
22. Cameron (or equal.) threaded pressure gage.
23. Threaded flange.
  
35. 2-inch flanged tee.
36. 3-inch (minimum) hose. (Furnished by Exxon).
37. Trip tank. (Furnished by Exxon).
38. 2-inch flanged plug or gate valve.
39. 2-1/2-inch pipe, 300' to pit, anchored.
40. 2-1/2-inch SE valve.
41. 2-1/2-inch line to steel pit or separator.

NOTES:

1. Items 3, 4 and 9 may be replaced with double ram type preventer with side outlets between the rams.
2. The two valves next to the stack on the fill and kill line to be closed unless drill string is being pulled.
3. Kill line is for emergency use only. This connection shall not be used for filling.
4. Replacement pipe rams and blind rams shall be on location at all times.
5. Only type U, LWS and QRC ram type preventers with secondary seals are acceptable for 5000 psi WP and higher BOP stacks.
6. Type E ram-type BOP's with factory modified side outlets may be used on 3000 psi or lower WP BOP stacks.

MIDLAND DRILLING ORGANIZATION  
 BLOWOUT PREVENTER SPECIFICATION  
 TYPE II - C



30-010-24105

*Confidential*

10-6-83

CN-LD

2900-4537

Surf. - 2882

DH-M-SFL

2700-4539