

**NEW MEXICO OIL CONSERVATION COMMISSION
WELL LOCATION AND ACREAGE DEDICATION PLAT**

Form C-102
Supersedes C-128
Effective 1-1-65

All distances must be from the outer boundaries of the Section.

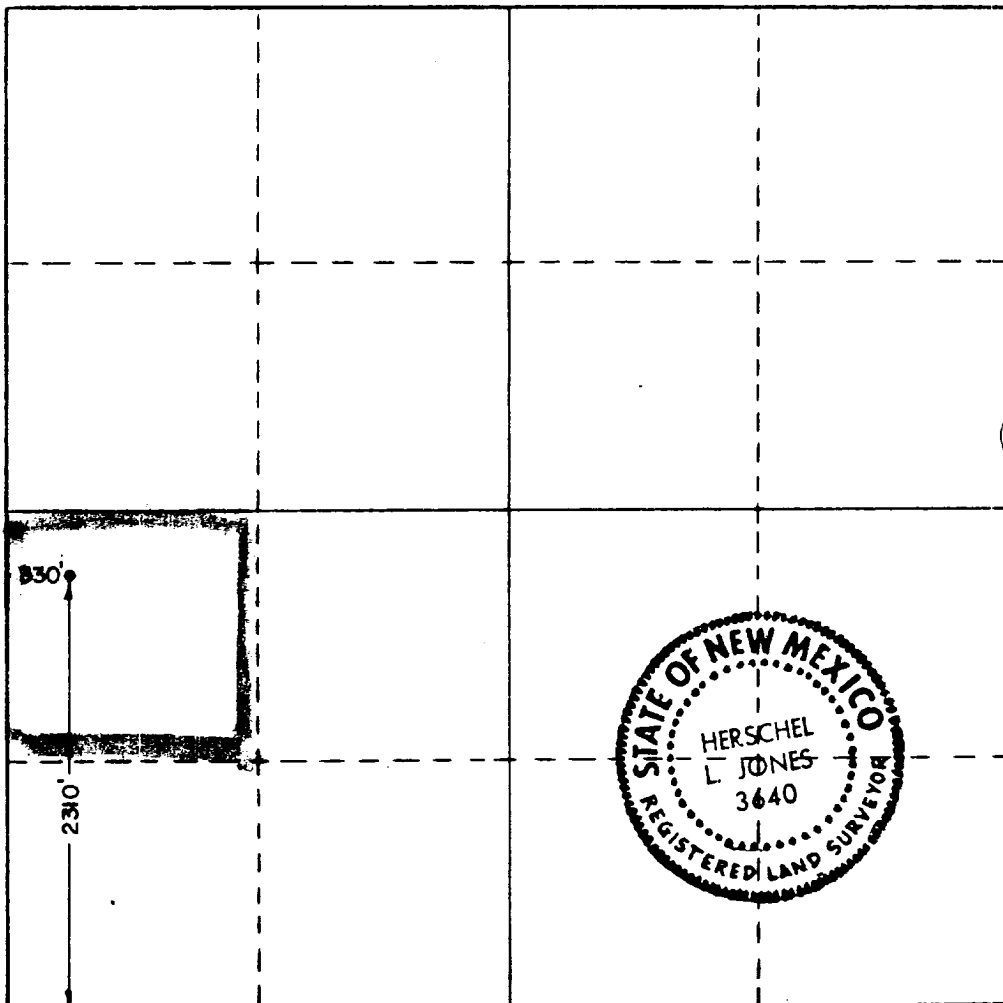
Operator SANTA FE EXPLORATION COMPANY			Lease MASON FEDERAL		Well No. 1
Unit Letter L	Section 33	Township 19 South	Range 31 East	County Eddy	
Actual Footage Location of Well:					
2310		feet from the South	line and 330	feet from the West	line
Ground Level Elev. 3457.2	Producing Formation Yates & Seven Rivers		Pool <i>Ward</i> North Hackberry (Y-SR) Ext.		Dedicated Acreage: 40 Acres

1. Outline the acreage dedicated to the subject well by colored pencil or hachure marks on the plat below.
2. If more than one lease is dedicated to the well, outline each and identify the ownership thereof (both as to working interest and royalty).
3. If more than one lease of different ownership is dedicated to the well, have the interests of all owners been consolidated by communitization, unitization, force-pooling, etc?

☐ Yes ☐ No If answer is "yes," type of consolidation _____

If answer is "no," list the owners and tract descriptions which have actually been consolidated. (Use reverse side of this form if necessary.) _____

No allowable will be assigned to the well until all interests have been consolidated (by communitization, unitization, forced-pooling, or otherwise) or until a non-standard unit, eliminating such interests, has been approved by the Commission.



CERTIFICATION

I hereby certify that the information contained herein is true and complete to the best of my knowledge and belief.

Jackie Midkiff

Name

Production Clerk

Position

Santa Fe Exploration Company

Company

10/3/83

Date

Jackie Midkiff

I hereby certify that the well location shown on this plat was plotted from field notes of actual surveys made by me or under my supervision, and that the same is true and correct to the best of my knowledge and belief.

Date Surveyed

9/27/83

Registered Professional Engineer
and/or Land Surveyor

Herschel L. Jones

Certificate No.

3640

0 320 640 960 1280 1600 1920 2240 2560 2880 3200 3520 3840 4160 4480 4800 5120 5440 5760 6080 6400