

All distances must be from the outer boundaries of the Section.

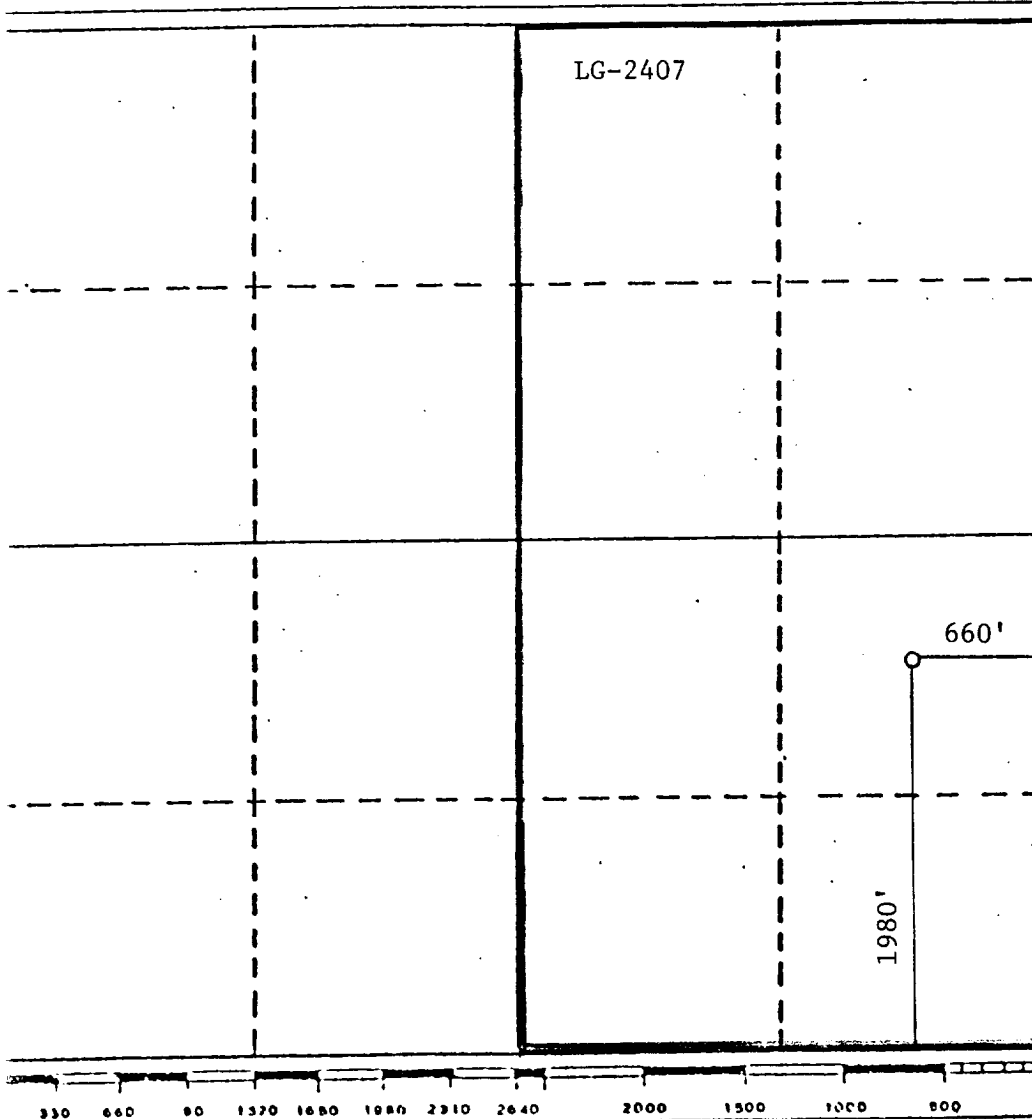
Operator Yates Petroleum Corporation		Lease Triangle Ranch YK State		Well No. 1
Init Letter I	Section 13	Township 19 South	Range 23 East	County Eddy
Actual Footage Location of Well: 1980 feet from the South line and 660 feet from the East line				
Ground Level Elev. 3831'	Producing Formation Cisco	Pool Undes. Cisco	Dedicated Acreage: 320 Acres	

1. Outline the acreage dedicated to the subject well by colored pencil or hachure marks on the plat below.
2. If more than one lease is dedicated to the well, outline each and identify the ownership thereof (both as to working interest and royalty).
3. If more than one lease of different ownership is dedicated to the well, have the interests of all owners been consolidated by communitization, unitization, force-pooling, etc?

☐ Yes ☐ No If answer is "yes," type of consolidation \_\_\_\_\_

If answer is "no," list the owners and tract descriptions which have actually been consolidated. (Use reverse side of this form if necessary.) \_\_\_\_\_

No allowable will be assigned to the well until all interests have been consolidated (by communitization, unitization, forced-pooling, or otherwise) or until a non-standard unit, eliminating such interests, has been approved by the Division.



<b>CERTIFICATION</b>	
I hereby certify that the information contained herein is true and complete to the best of my knowledge and belief.	
Name	Juanita Goodlett
Position	Production Supervisor
Company	Yates Petroleum Corporation
Date	7-3-84
I hereby certify that the well location shown on this plat was plotted from field notes of actual surveys made by me or under my supervision, and that the same is true and correct to the best of my knowledge and belief.	
Refer to original plat dated	
Date Surveyed	11/11/83
Registered Professional Engineer and/or Land Surveyor	
Certificate No.	