

30-015-24

Form 9-331 C
(May 1963)

NM OIL CONS. COM. VION
Drawer DB
SUBMIT IN T. LICATE*
(Other instructions on reverse side)

Form approved.
Budget Bureau No. 42-R1425.

UNITED STATES
DEPARTMENT OF THE INTERIOR
GEOLOGICAL SURVEY
RECEIVED

C/S 87

APPLICATION FOR PERMIT TO DRILL, DEEPEN, OR PLUG BACK

1a. TYPE OF WORK
DRILL ☒ DEEPEEN ☐ LAND MONT PLUG BACK ☐
1b. TYPE OF WELL
OIL WELL ☒ GAS WELL ☐ OTHER ☐
2. NAME OF OPERATOR
Coquina Oil Corporation
3. ADDRESS OF OPERATOR
P. O. Box 2960 Midland, Texas 79702
4. LOCATION OF WELL (Report location clearly and in accordance with any State requirements.)
At surface 660' FEL & 1980' FNL of Sec
At proposed prod. zone same
14. DISTANCE IN MILES AND DIRECTION FROM NEAREST TOWN OR POST OFFICE*
15 miles SW of Artesia
15. DISTANCE FROM PROPOSED*
LOCATION TO NEAREST PROPERTY OR LEASE LINE, FT.
(Also to nearest drlg. unit line, if any) 660'
16. NO. OF ACRES IN LEASE
320
17. NO. OF ACRES ASSIGNED TO THIS WELL
40
18. DISTANCE FROM PROPOSED LOCATION*
TO NEAREST WELL, DRILLING, COMPLETED, OR APPLIED FOR, ON THIS LEASE, FT.
2640'
19. PROPOSED DEPTH
2800'
20. ROTARY OR CABLE TOOLS
Rotary
21. ELEVATIONS (Show whether DF, RT, GR, etc.)
3517' GL
22. APPROX. DATE WORK WILL START*
December 16, 1983

5. LEASE DESIGNATION AND SERIAL NO.
NM0504364-B
6. IF INDIAN, ALLOTTEE OR TRIBE NAME

7. UNIT AGREEMENT NAME

8. FARM OR LEASE NAME
Pan Canadian
9. WELL NO.
2
10. FIELD AND POOL, OR WILDCAT
Seven Rivers (Yeso)
11. SEC., T., R., M., OR BLK. AND SURVEY OR AREA
Sec. 34, T19S, R25E
12. COUNTY OR PARISH
Eddy
13. STATE
NM

RECEIVED BY
DEC 16 1983
O. C. D.
ARTESIA, NM

PROPOSED CASING AND CEMENTING PROGRAM

SIZE OF HOLE	SIZE OF CASING	WEIGHT PER FOOT	SETTING DEPTH	QUANTITY OF CEMENT
12 1/4"	8 5/8"	24	1250'	900 sxs
7 7/8"	5 1/2"	14	2800'	160 sxs

Proposed to drill 12 1/4" hole to 1250'. Cement 8 5/8" with 900 sxs cement and circulate cement to surface. WOC 18 hrs. Test 8 5/8" to 700 psi. Then BOP will be installed & 7 7/8" hole drilled to TD 2800'. If we decide to run production casing, 5 1/2" casing will be cemented at TD with 160 sxs cement.

IN ABOVE SPACE DESCRIBE PROPOSED PROGRAM: If proposal is to deepen or plug back, give data on present productive zone and proposed new productive zone. If proposal is to drill or deepen directionally, give pertinent data on subsurface locations and measured and true vertical depths. Give blowout preventer program, if any.

24. SIGNED J. B. Taylor TITLE Production Engineer DATE 12/1/83
(This space for Federal or State office use)

PERMIT NO. _____ APPROVAL DATE _____
'Orig. Sgd.' Earl R. Cunningham TITLE District Manager DATE DEC 15 1983
APPROVED BY _____ CONDITIONS OF APPROVAL, IF ANY: _____

APPROVAL SUBJECT TO
GENERAL REQUIREMENTS AND
SPECIAL STIPULATIONS
ATTACHED

*See Instructions On Reverse Side

Posted a PD
12-1-83
12-23-83

All distances must be from the outer boundaries of the Section.

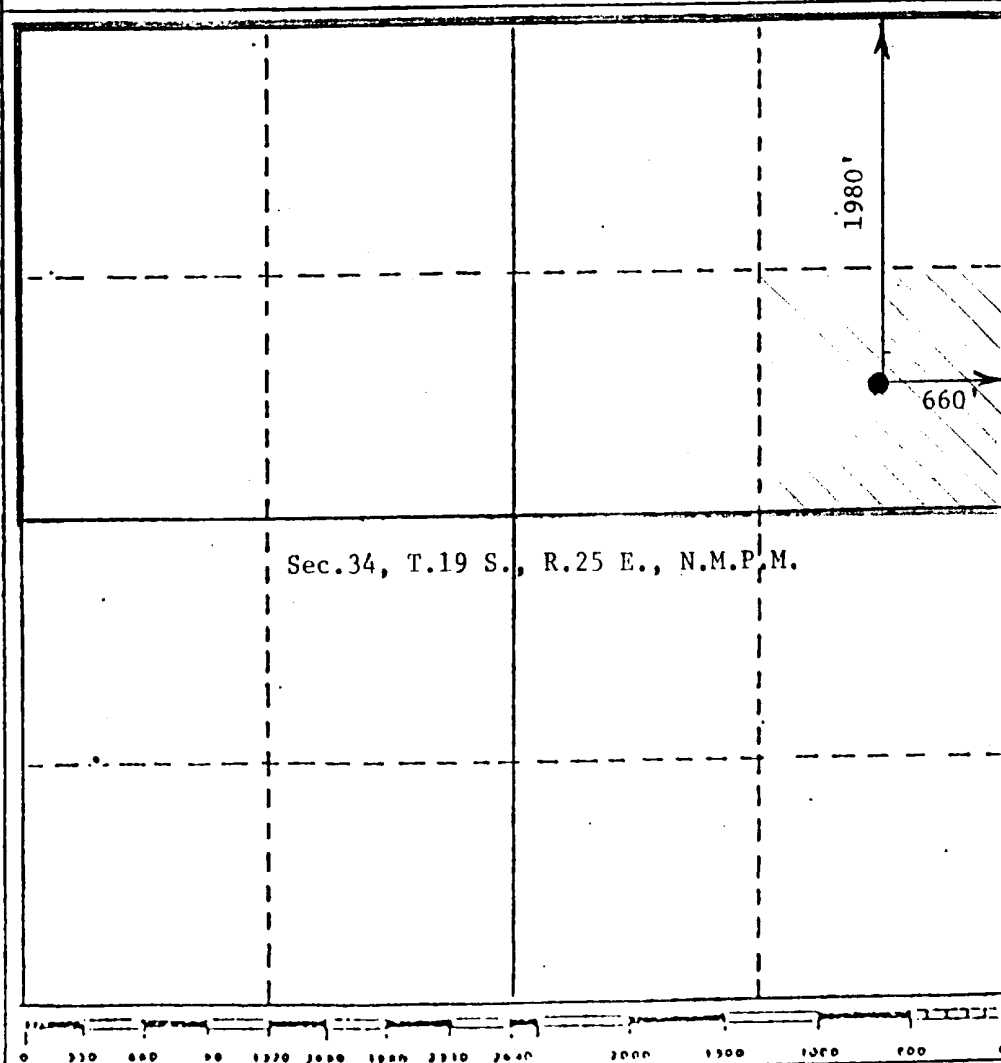
Operator Coquina Oil Corporation			Lease Pan Canadian		Well No. #2
Unit Letter H	Section 34	Township 19 South	Range 25 East	County Eddy	
Actual Postage Location of Well:					
1980 feet from the North line and		660 feet from the East line			
Ground Level Elev. 3517	Producing Formation Yeso	Pool Seven Rivers - Yeso		Dedicated Acreage 40	Acre

1. Outline the acreage dedicated to the subject well by colored pencil or hachure marks on the plat below.
2. If more than one lease is dedicated to the well, outline each and identify the ownership thereof (both as to working interest and royalty).
3. If more than one lease of different ownership is dedicated to the well, have the interests of all owners been consolidated by communitization, unitization, force-pooling, etc?

☐ Yes ☐ No If answer is "yes," type of consolidation _____

If answer is "no," list the owners and tract descriptions which have actually been consolidated. (Use reverse side of this form if necessary.) _____

No allowable will be assigned to the well until all interests have been consolidated (by communitization, unitization, force-pooling, or otherwise) or until a non-standard unit, eliminating such interests, has been approved by the Division



CERTIFICATION

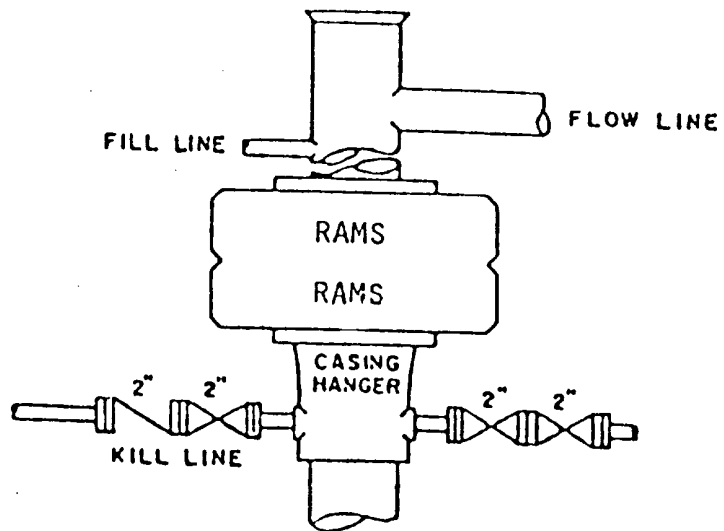
I hereby certify that the information contained herein is true and complete to the best of my knowledge and belief.

Name *Lucy L. L...*
Position *Drilling Foreman*
Company *Coquina Oil Corp*
Date *12-5-83*

I hereby certify that the well location shown on this plat was plotted from field notes of actual surveys made by me or under my supervision, and that the same is true and correct to the best of my knowledge and belief.

JOHN D. JAQUES
Date Surveyed *November 29, 1983*
Registered Professional Engineer and/or Surveyor
John D. Jaques
License No. *6290*

BLOWOUT PREVENTER SKETCH
Coquina Oil Corporation
Well #2 Pan Canadian
1980' FNL & 660' FEL Sec. 34-19S-25E



BOP ARRANGEMENT

SUPPLEMENTAL DRILLING DATA

COQUINA OIL CORPORATION
WELL #2 PAN CANADIAN
1980' FNL & 660' FEL SEC. 34-19S-25E
EDDY COUNTY, NEW MEXICO

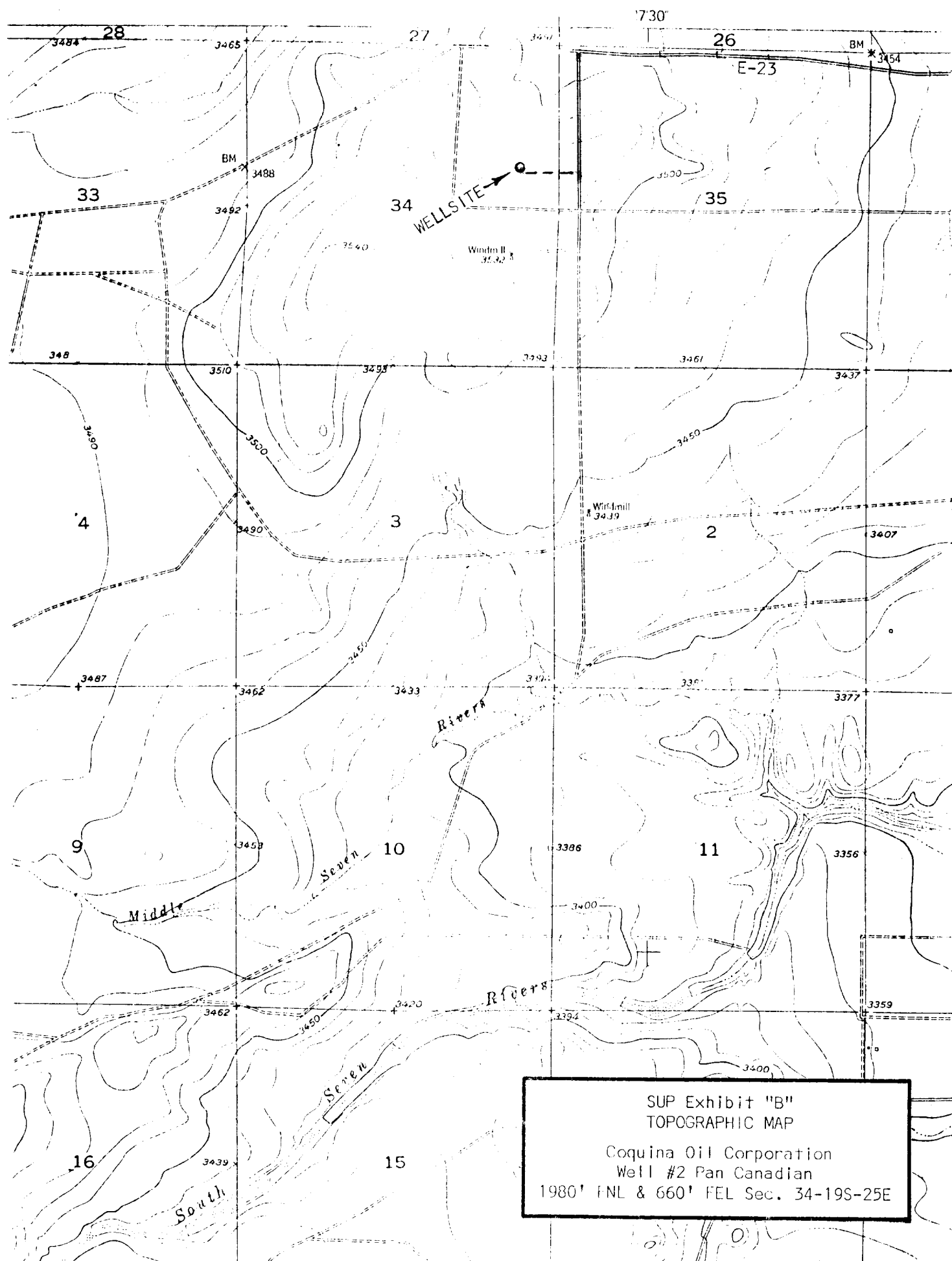
1. SURFACE FORMATION: Quaternary.
2. ESTIMATED TOPS OF GEOLOGIC MARKERS (Ground Elevation - 3517'):

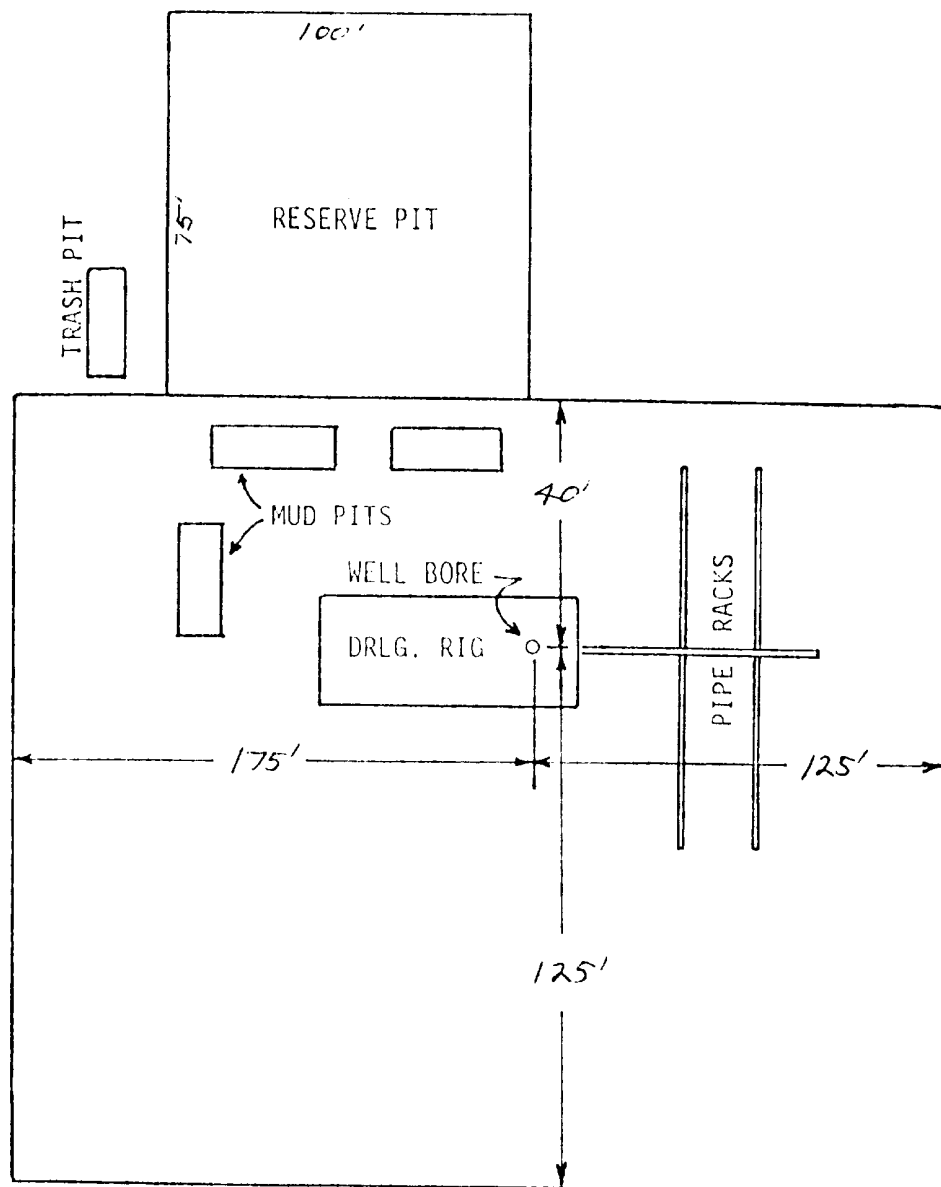
Grayburg	600'
San Andres	875'
Yeso	2430'
3. ANTICIPATED POROSITY ZONES:

Water :	900 - 1050'
Oil :	2430 - 2680'
4. CASING DESIGN:

<u>Size</u>	<u>Interval</u>	<u>Weight</u>	<u>Grade</u>	<u>Joint</u>	<u>Condition</u>
8 5/8"	0 - 1250'	24.0#	K-55	STC	Used
5 1/2"	0 - 2800'	14.0#	K-55	STC	Used
5. PRESSURE CONTROL EQUIPMENT: Two ram-type preventors will be used.
6. CIRCULATING MEDIUM:

0 - 1250'	Fresh water conditioned as necessary for control of viscosity and water loss. If lost circulation becomes a problem, well will be drilled dry to casing point.
1250 - 2400'	Fresh water.
2400 - 2800'	Mud up and maintain a viscosity of 36 and water loss of 10 or less.
7. AUXILIARY EQUIPMENT: Drill string safety valve.
8. TESTING, LOGGING AND CORING PROGRAMS: No cores or DST's are planned.
A Gamma Ray log will be run to TD.
9. ABNORMAL PRESSURES, TEMPERATURES OR GAS: None anticipated.
10. ANTICIPATED STARTING DATE: It is planned that drilling operations will commence about December 18, 1983. Duration of drilling and completion operations should be five to thirty days.





SUP Exhibit "D"
SKETCH OF WELL PAD

Coquina Oil Corporation
Well #2 Pan Canadian
1980' FNL & 660' FEL Sec. 34-19S-25E