

APPROVAL SUBJECT TO
GENERAL REQUIREMENTS AND
SPECIAL STIPULATIONS
ATTACHED

**NEW MEXICO OIL CONSERVATION COMMISSION
WELL LOCATION AND ACREAGE DEDICATION PLAT**

Form C-102
Supersedes C-128
Effective 1-1-65

All distances must be from the outer boundaries of the Section.

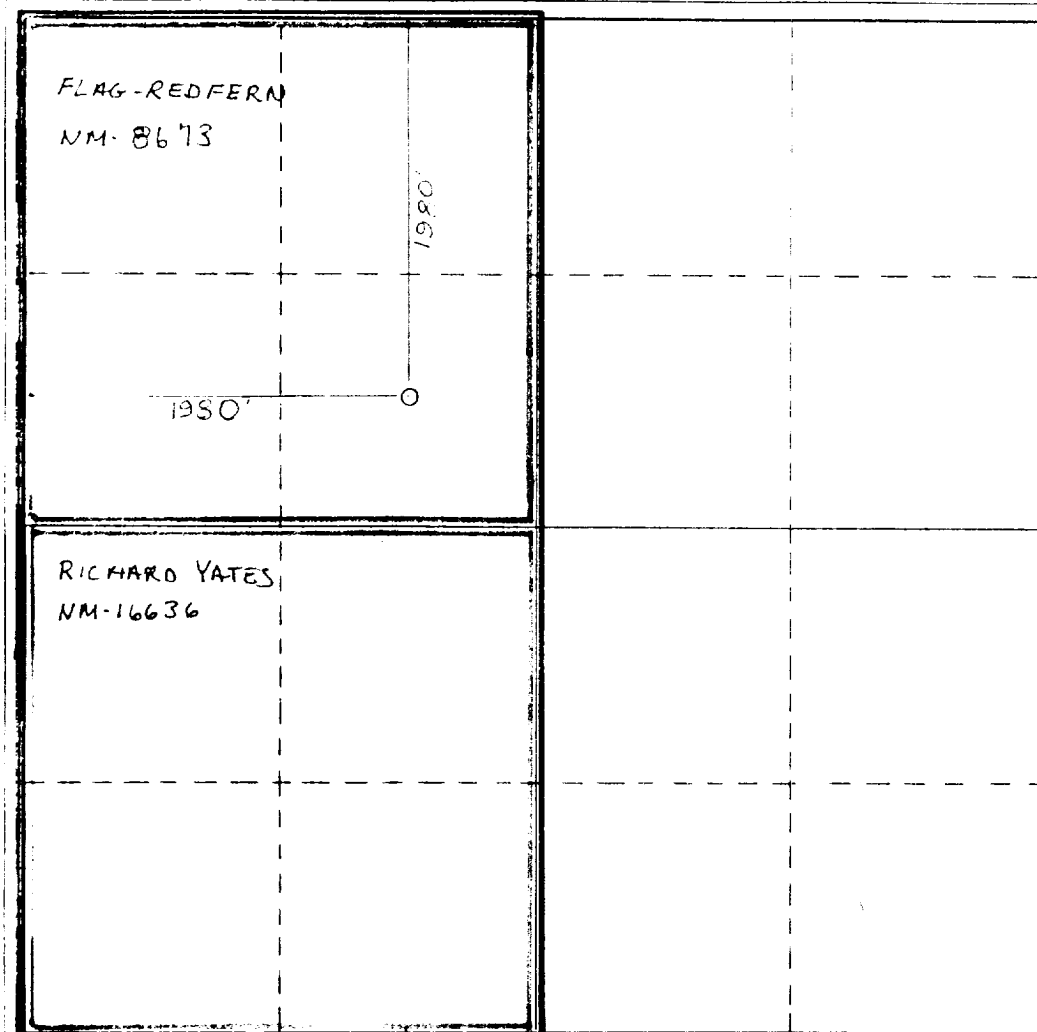
Owner YATES PETROLEUM CORPORATION			Lease Benson Deep Unit		Well No. 4
Tract Letter 5	Section 3	Township 19 South	Range 30 East	County Eddy	
Initial Footage Location of Well:					
1980 feet from the North		Line and 1980 feet from the West		Elev.	
Initial Level Elev. 3414	Producing Formation MORROW	Pool: BENSON DEEP UNIT		Dedicated Acreage: 320	

1. Outline the acreage dedicated to the subject well by colored pencil or hatchure marks on the plat below.
2. If more than one lease is dedicated to the well, outline each and identify the ownership thereof (both as to working interest and royalty).
3. If more than one lease of different ownership is dedicated to the well, have the interests of all owners been consolidated by communitization, unitization, force-pooling, etc?

☒ Yes ☐ No If answer is "yes," type of consolidation UNITIZED

If answer is "no," list the owners and tract descriptions which have actually been consolidated. (Use reverse side of this form if necessary.) _____

No allowable will be assigned to the well until all interests have been consolidated (by communitization, unitization, forced-pooling, or otherwise) or until a non-standard unit, eliminating such interests, has been approved by the Commission.



CERTIFICATION

I hereby certify that the information contained herein is true and complete to the best of my knowledge and belief.

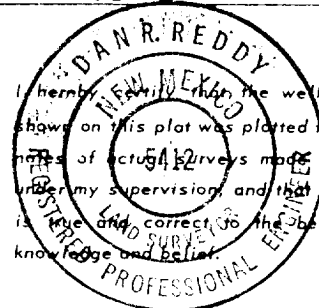
Gliserio Rodriguez
Name
GLISERIO RODRIGUEZ

Position
REG. AGT.

Company
YATES PET. CORP.

Date
12-13-83

I hereby certify that the well location shown on this plat was plotted from field notes of actual surveys made by me or under my supervision, and that the same is true and correct to the best of my knowledge and belief.



Date Surveyed

Dec. 6, 1983

Registered Professional Engineer and/or Land Surveyor

Dan R. Reddy
Certificate No.

NMPE&LS #5412

0 330 660 990 1320 1650 1980 2310 2640 2000 1500 1000 500 0

Operating head if necessary
Kill up Line

BOP
2000 psi

Flowline

ANNULAR BOP

(Hydrill)

Exhibit B

900

PIPE RAMS

900

Shaffer 10" Series 900

Hydraulically Operated B.O.P.'s

PIPE RAMS

900

Check Valve

Steel
Valve

4 inch Kill
Line

4 inch Line

inghead or Breakland

FOLLOWING CONTAINS MINIMUM REQUIREMENTS FOR BOP'S

All preventers to be hydraulically operated with secondary manual controls installed prior to drilling run from wellbore.

Choke outlet to be a minimum of 4" diameter.

Kill line to be of all steel construction of 2" minimum diameter.

All connections from operating manifold to preventer to be all steel, hole or tube a minimum of one inch in diameter.

The available closing pressure shall be at least 15% in excess of that required with sufficient volume to operate the B.O.P.'s.

All connections to and from preventer to have a pressure rating equivalent to that of the B.O.P.'s.

Inside blowout preventer to be available on rig floor.

Operating controls located a safe distance from the rig floor.

Hole must be kept filled on trips before immediate casing. Operator not responsible for blowouts resulting from not keeping hole full.

D. P. float must be installed and used before any of that gas intrusion

YATES PETROLEUM CORPORATION
Benson Deep Unit #4
1980' FNL and 1980' FWL
Section 3-T19S-R30E
Eddy County, New Mexico

In conjunction with Form 9-331C, Application for Permit to Drill subject well, Yates Petroleum Corporation submits the following ten items of pertinent information in accordance with BLM requirements.

1. The geologic surface formation is sandy alluvium.
2. The estimated tops of geologic markers are as follows:

Yates	1690'	Strawn	10650'
Queen	2800'	Atoka	10980'
Grayburg	3220'	Morrow Clastics	11580'
San Andres	3660'	Lower Morrow	11750'
Bone Springs Limestone	9125'	Chester	11960'
3rd Bone Springs Sand	9125'	TD	12200'
Wolfcamp	9555'		

3. The estimated depths at which anticipated water, oil or gas formations are expected to be encountered:

Water: approximately 150-200'

Oil or Gas:	San Andres	3680-3760'	Atoka	11020'
	Wolfcamp	9580'	Morrow	11650'

4. Proposed Casing Program: See Form 9-331C.
5. Pressure Control Equipment: See Form 9-331C.
6. Mud Program: See Form 9-331C.
7. Auxiliary Equipment: Kelly Cock; pit level indicators and flow sensor equipment; sub with full-opening valve on floor, drill pipe connection.
8. Testing, Logging and Coring Program:
Samples: 10' samples caught out from under surface casing to TD.
DST's: As warranted.
Logging: 2 runs; shallow run; CNL-FDC TD to surface casing w/GR-CNL onto surface. DLL, TD to surface casing. Deep run: CNL-RDC, TD to casing, DLL TD to csg w/RxO from TD to 8400'.
Mud Logging: One man unit on out from under surface casing to TD.
9. No abnormal pressures or temperatures are anticipated.
10. Anticipated starting date: As soon as possible after approval.

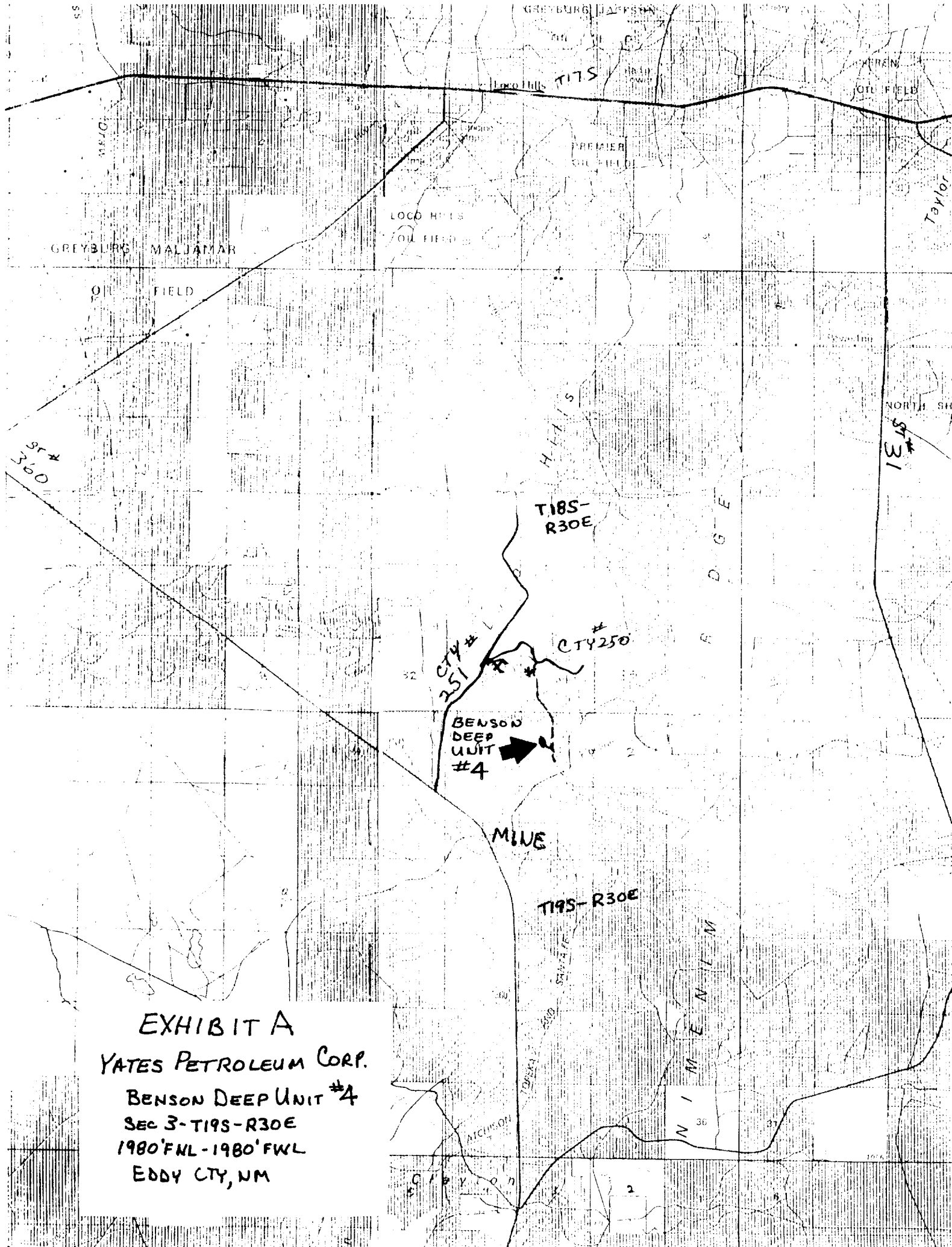
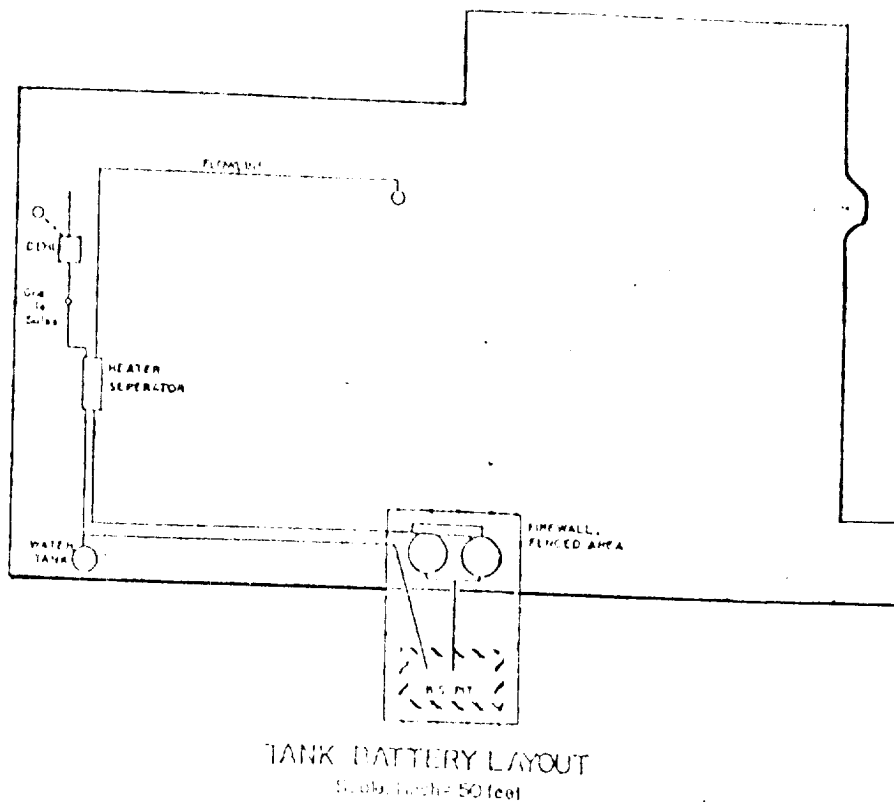
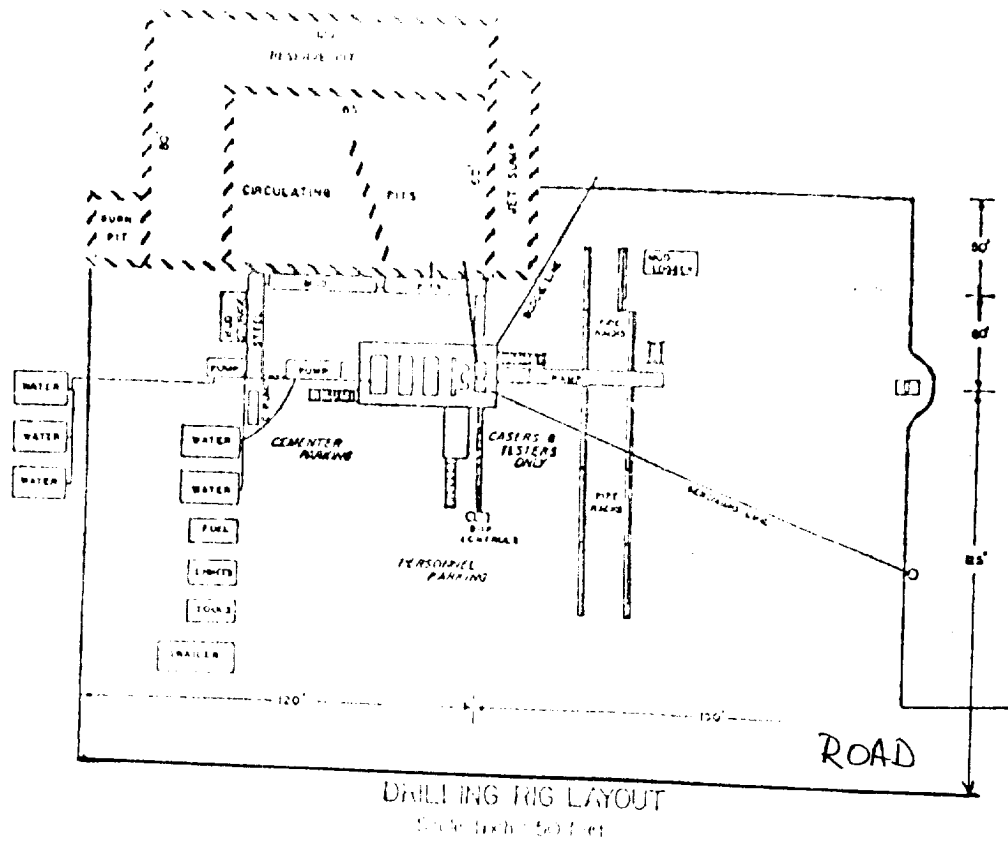


EXHIBIT A
YATES PETROLEUM CORP.
BENSON DEEP UNIT #4
SEC 3-T195-R30E
1980'FWL-1980'FWL
EDDY CTY, NM

Exhibit C



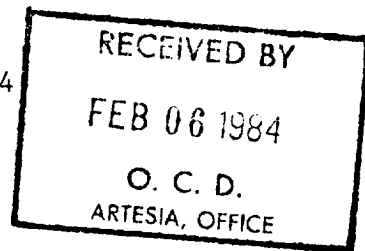


United States Department of the Interior

BUREAU OF LAND MANAGEMENT
Roswell District Office
P.O. Box 1397
Roswell, New Mexico 88201

IN REPLY
REFER TO:
NM-8673

February 2, 1984



Yates Petroleum Corporation
207 S. 4th St.
Artesia, NM 88210

Gentlemen:

Your application for Permit to Drill well No. 4 Benson Deep Unit in the SE $\frac{1}{4}$ NW $\frac{1}{4}$, sec. 3, T. 19 S., R. 30 E., Eddy County, New Mexico, lease NM-8673, to a depth of 12,200 feet to test the Morrow formation in the oil-potash area, is hereby approved as amended by stipulations attached to the application.

One copy of the application is returned herewith. Please notify the Bureau of Land Management office checked on the attached special stipulation, in sufficient time for a representative to witness all cementing operations.

Sincerely yours,

{Orig. Sgd.} Earl R. Cunningham
District Manager

Enclosure

cc: NMOCD Artesia