

NM OIL & GAS COMMISSION
Artesia UNIT 88210
UNITED STATES
DEPARTMENT OF THE INTERIOR
GEOLOGICAL SURVEY

SUBMIT IN TRIPLICATE*
(Other instructions on reverse side)

Form approved.
Budget Bureau No. 42-R1425.

C/S 7

APPLICATION FOR PERMIT TO DRILL, DEEPEN, OR PLUG BACK

1a. TYPE OF WORK
DRILL ☒ DEEPEN ☐ PLUG BACK ☐

b. TYPE OF WELL
OIL WELL ☒ GAS WELL ☐ OTHER ☐ SINGLE ZONE ☐ MULTIPLE ZONE ☐

2. NAME OF OPERATOR
Ray Westall

3. ADDRESS OF OPERATOR
P.O. Box 4 Loco Hills, New Mexico 88255

4. LOCATION OF WELL (Report location clearly and in accordance with any State requirements.)*
At surface
1980 FNL & 660 FEL
At proposed prod. zone

14. DISTANCE IN MILES AND DIRECTION FROM NEAREST TOWN OR POST OFFICE*
10 miles south of Loco Hills, NM

15. DISTANCE FROM PROPOSED* LOCATION TO NEAREST PROPERTY OR LEASE LINE, FT.
(Also to nearest drg. unit line, if any)
660'
18. DISTANCE FROM PROPOSED LOCATION* TO NEAREST WELL, DRILLING, COMPLETED, OR APPLIED FOR, ON THIS LEASE, FT.
2600'

16. NO. OF ACRES IN LEASE
80
19. PROPOSED DEPTH
2500'

17. NO. OF ACRES ASSIGNED TO THIS WELL
40
20. ROTARY OR CABLE TOOLS
Rotary

21. ELEVATIONS (Show whether DF, RT, GR, etc.)
3502. GR
22. APPROX. DATE WORK WILL START*
ASAP

PROPOSED CASING AND CEMENTING PROGRAM

SIZE OF HOLE	SIZE OF CASING	WEIGHT PER FOOT	SETTING DEPTH	QUANTITY OF CEMENT
12 1/2"	8 5/8"	30#	600'	300 sx circulate
8"	5 1/2"	24#	2500'	800 sx

RECEIVED BY
MAY 03 1984
O. C. D.
ARTESIA OFFICE

We propose to drill and test the Yates and Seven Rivers formations. Approximately 600 feet of 8 5/8" casing will be run and the cement circulated. 5 1/2" casing will be set at 2500 feet and cemented with approximately 800 sacks cement. We will perforate and frac for production.

IN ABOVE SPACE DESCRIBE PROPOSED PROGRAM: If proposal is to deepen or plug back, give data on present productive zone and proposed new productive zone. If proposal is to drill or deepen directionally, give pertinent data on subsurface locations and measured and true vertical depths. Give blowout preventer program, if any.

24. SIGNED _____ TITLE Operator DATE 5-2-84
(This space for Federal or State office use)

BUREAU OF LAND MANAGEMENT
RECEIVED
MAR 20 1984
DIST. 8 N. M.
FOSWELL, NEW MEXICO

APPROVED BY *[Signature]*
CONDITIONS OF APPROVAL, IF ANY:

APPROVAL DATE
AREA MANAGER
TITLE CARLSBAD RESOURCE AREA
*Post. a #2
ID-1 ch / Bk.
5-4-84*

DATE 5-2-84
APPROVAL SUBJECT TO
GENERAL REQUIREMENTS AND
SPECIAL STIPULATIONS
ATTACHED

NEW MEXICO OIL CONSERVATION COMMISSION
WELL LOCATION AND ACREAGE DEDICATION PLAT

Form C-102
Supersedes C-128
Effective 1-1-65

All distances must be from the outer boundaries of the Section.

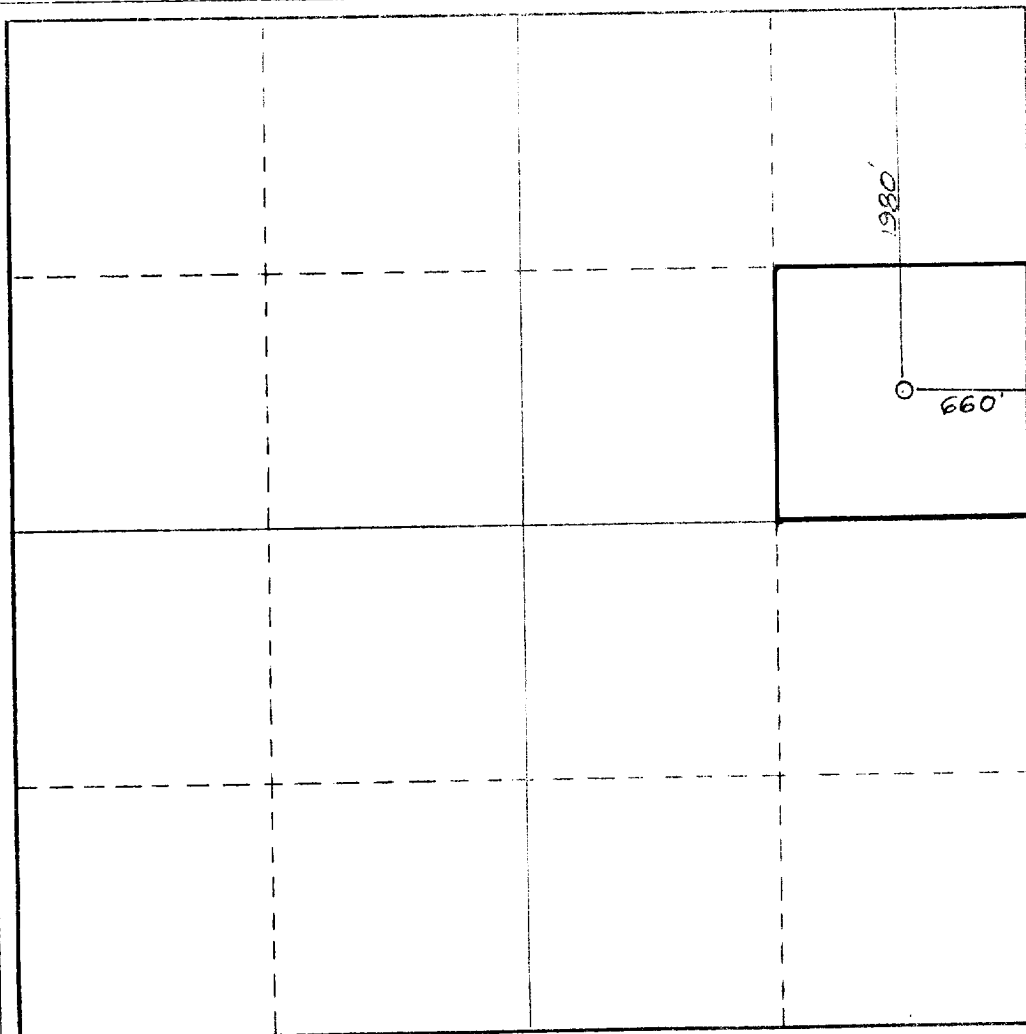
Operator RAY WESTALL		Lease Hill Federal		Well No. 1
Unit Letter H	Section 21	Township 19 South	Range 31 East	County Eddy
Actual Footage Location of Well: 1980 feet from the North line and 660 feet from the East line				
Ground Level Elev. 3502.	Producing Formation Yates/7 Rivers	Pool <i>Unit</i> N. Hackberry - Y-5R	Dedicated Acreage: 40 Acres	

1. Outline the acreage dedicated to the subject well by colored pencil or hatchure marks on the plat below.
2. If more than one lease is dedicated to the well, outline each and identify the ownership thereof (both as to working interest and royalty).
3. If more than one lease of different ownership is dedicated to the well, have the interests of all owners been consolidated by communitization, unitization, force-pooling, etc?

☐ Yes ☐ No If answer is "yes," type of consolidation _____

If answer is "no," list the owners and tract descriptions which have actually been consolidated. (Use reverse side of this form if necessary.) _____

No allowable will be assigned to the well until all interests have been consolidated (by communitization, unitization, forced-pooling, or otherwise) or until a non-standard unit, eliminating such interests, has been approved by the Commission.



CERTIFICATION

I hereby certify that the information contained herein is true and complete to the best of my knowledge and belief.

Name
Ray Westall
Position
Operator
Company

Date
3/9/84

I hereby certify that the well location shown on this plat was plotted from field notes of actual surveys made by me or under my supervision, and that the same is true and correct to the best of my knowledge and belief.

Date Surveyed
February 21, 1984

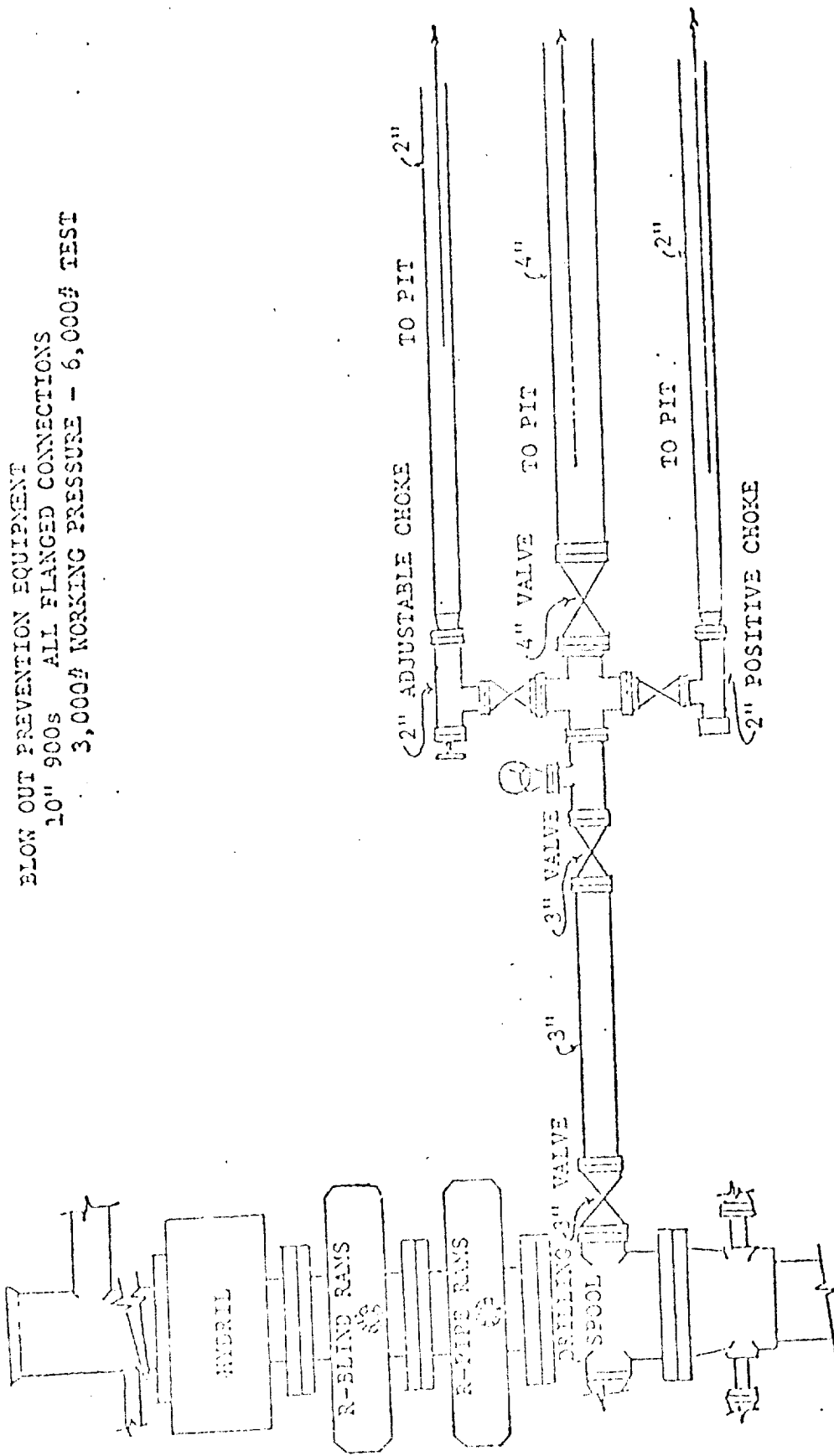
Registered Professional Engineer and/or Land Surveyor

Don R. Kealey
Certificate No.

NM PE&LS #5412

0 330 660 990 1320 1650 1980 2310 2640 2970 3300 3630 3960 4290 4620 4950 5280 5610 5940 6270 6600

BLOW OUT PREVENTION EQUIPMENT
 10" 900s ALL FLANGED CONNECTIONS
 3,000# WORKING PRESSURE - 6,000# TEST



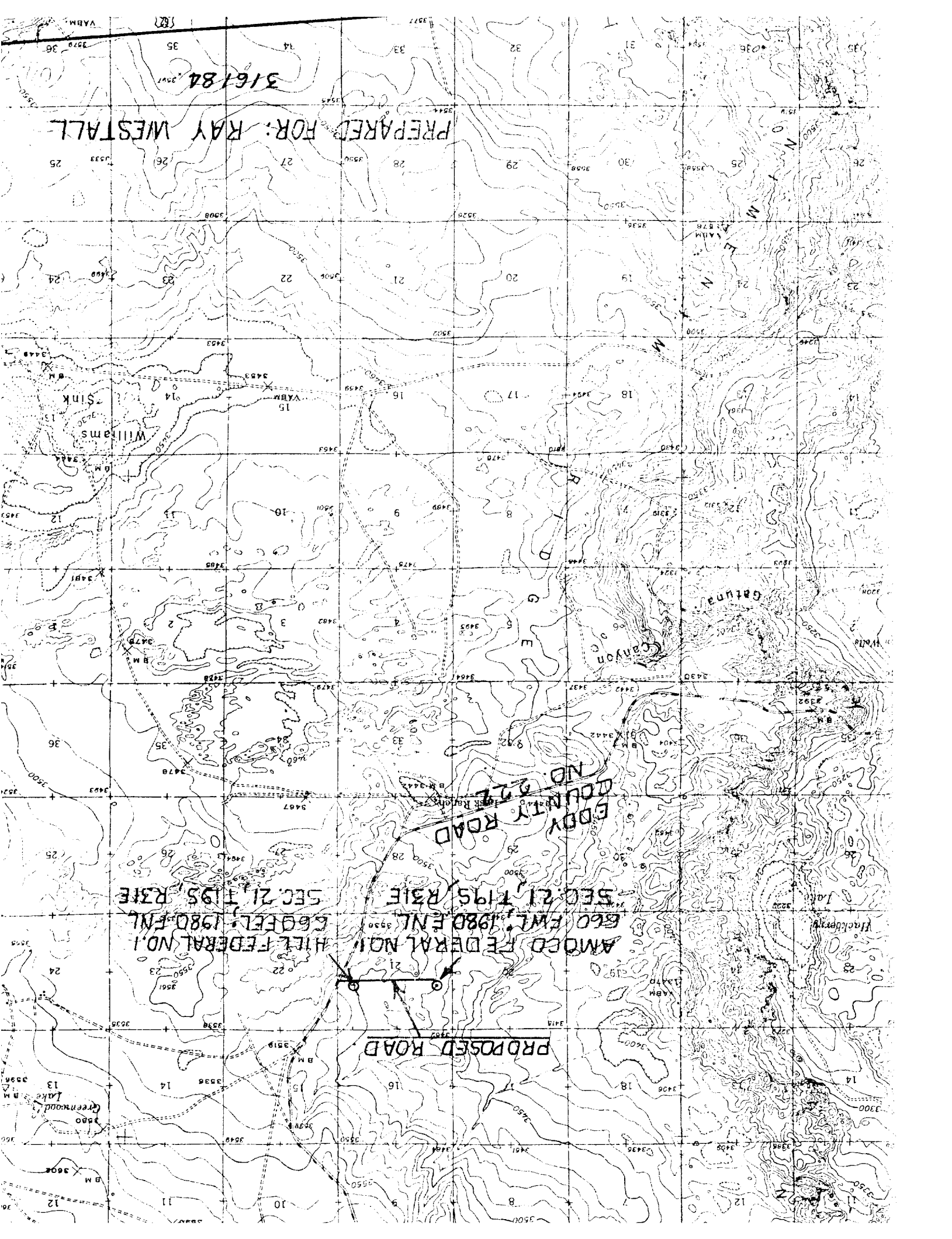
ATTACHMENT TO FORM C-101

APPLICATION FOR DRILLING

RAY WESTALL

In conjunction with the form 9-331C, application for permit to drill subject wells, Ray Westall submits the following ten items of pertinent information in accordance with USGS requirements:

1. The Geological surface formation is quaternary.
2. The estimated tops of geologic markers are as follows:
Yates 2050
7 Rivers 2500
3. The estimated depths at which anticipated water, oil and gas formations are expected to be encountered:
Water 180
Oil and gas zones listed above in item 2
4. Proposed Casing Program: See form 9-331C
5. Pressure Control Equipment: See form 9-331C and Exhibit E
6. Mud Program: Mud up 100' before TD and circulate 2 hours after TD and pull drill pipe laying down and run casing.
7. Auxiliary Equipment: N/A
8. Testing, Logging and Coring Program: Logging open hole, running gamma ray, and cement bond log.
9. No abnormal pressures or temperatures are anticipated.
10. Anticipated Starting Date: As soon as possible.



316184

PREPARED FOR: RAY WESTALL

EDDY COUNTY ROAD
NO. 22

AMOCO FEDERAL NO. 1 HILL
660 F.W.L. 1980 F.N.L. 660 F.W.L. 1980 F.N.L.
SEC. 21, T. 19S, R. 31E

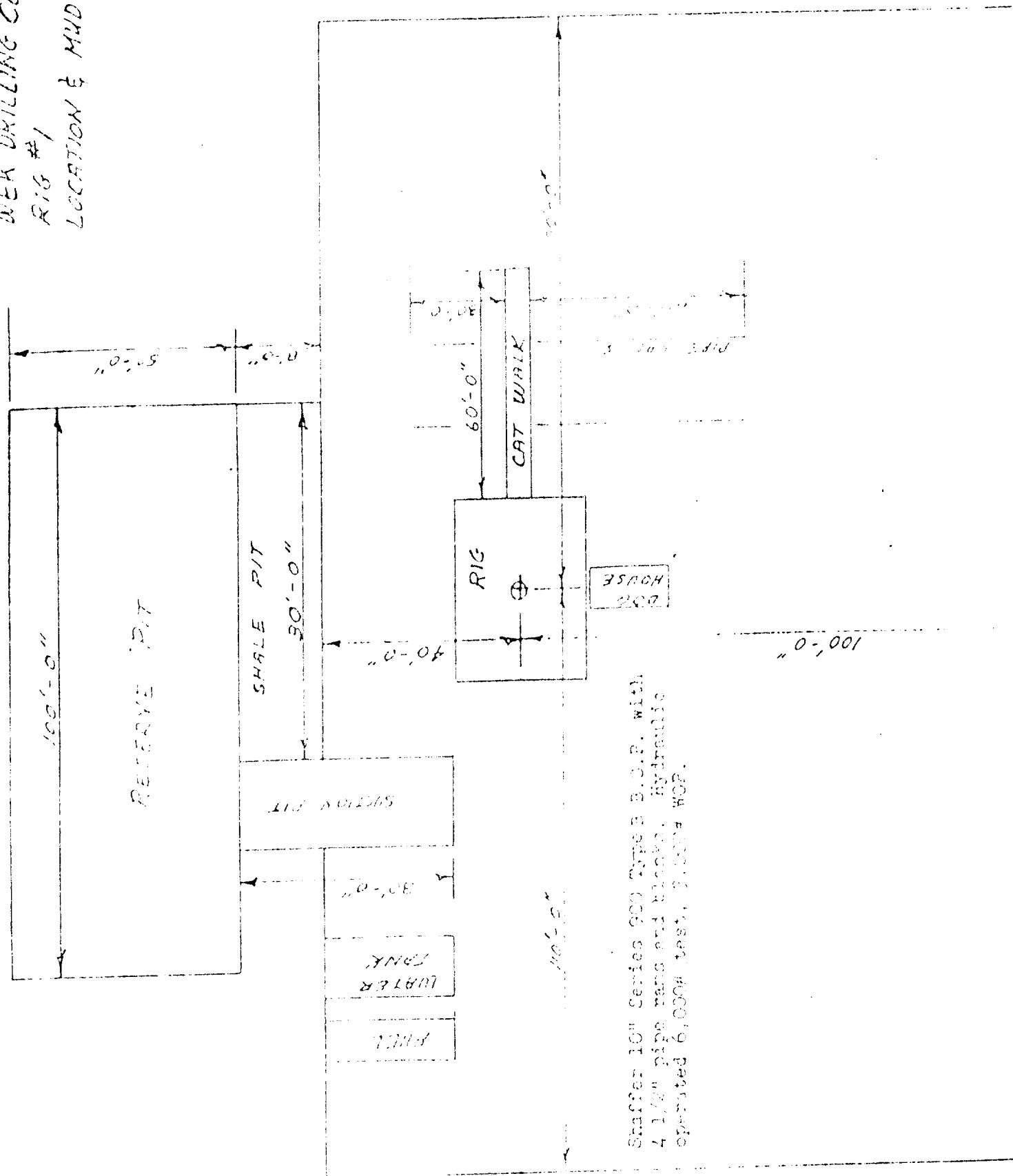
PROPOSED ROAD

Greenwood Lake
Williams Sink

Blackberry Lake

Canyon

WEK DRILLING CO., INC.
 RIG #1
 LOCATION & MUD PIT SPE.



Shaffer 10" Series 900 Type B B.O.P. with
 4 1/2" pipe rams and blocks. Hydraulic
 operated 6,000W test, 3,000W WOP.

DESIGNATION OF OPERATOR

The undersigned is, on the records of the Bureau of Land Management, holder of lease

DISTRICT LAND OFFICE: Santa Fe
SERIAL No.: NM 28500

and hereby designates

NAME: Ray Westall
ADDRESS: Box 4, Loco Hills, New Mexico 88255

as his operator and local agent, with full authority to act in his behalf in complying with the terms of the lease and regulations applicable thereto and on whom the supervisor or his representative may serve written or oral instructions in securing compliance with the Operating Regulations with respect to (describe acreage to which this designation is applicable):

T. 19S R 31E N4PM, Eddy County, New Mexico
Sec. 21: E $\frac{1}{2}$ NE $\frac{1}{4}$

Containing 80 acres, more or less

from the surface to the base of the San Andres Formation

It is understood that this designation of operator does not relieve the lessee of responsibility for compliance with the terms of the lease and the Operating Regulations. It is also understood that this designation of operator does not constitute an assignment of any interest in the lease.

In case of default on the part of the designated operator, the lessee will make full and prompt compliance with all regulations, lease terms, or orders of the Secretary of the Interior or his representative.

The lessee agrees promptly to notify the supervisor of any change in the designated operator.

Francis L. Hill

(Signature of lessee)

1849 White Bear Ave
St Paul, Mn 55109

(Address)

(Date)