

Drawer DD

Artesia, NM 88210

UNITED STATES

DEPARTMENT OF THE INTERIOR

GEOLOGICAL SURVEY

30-015-24864

## APPLICATION FOR PERMIT TO DRILL, DEEPEN, OR PLUG BACK

1a. TYPE OF WORK

DRILL ☒DEEPEN ☐PLUG BACK ☐

b. TYPE OF WELL

OIL  
WELL ☒GAS  
WELL ☐OTHER ☐SINGLE  
ZONE ☐MULTIPLE  
ZONE ☐

2. NAME OF OPERATOR

Ray Westall

3. ADDRESS OF OPERATOR

P. O. Box 4 Loco Hills, New Mexico 88255

4. LOCATION OF WELL (Report location clearly and in accordance with any State requirements.)\*

At surface

1980 FNL &amp; 660 FWL

At proposed prod. zone

14. DISTANCE IN MILES AND DIRECTION FROM NEAREST TOWN OR POST OFFICE\*

10 miles south of Loco Hills, NM

15. DISTANCE FROM PROPOSED\*

LOCATION TO NEAREST  
PROPERTY OR LEASE LINE, FT.

660'

(Also to nearest drlg. unit line, if any)

18. DISTANCE FROM PROPOSED LOCATION\*

TO NEAREST WELL, DRILLING, COMPLETED,  
OR APPLIED FOR, ON THIS LEASE, FT.

2600'

21. ELEVATIONS (Show whether DP, RT, GR, etc.)

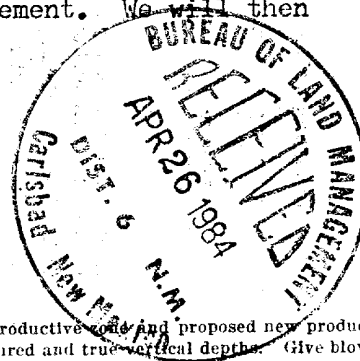
3476. GR

23.

## PROPOSED CASING AND CEMENTING PROGRAM

SIZE OF HOLE	SIZE OF CASING	WEIGHT PER FOOT	SETTING DEPTH	QUANTITY OF CEMENT
12"	8 5/8"	30	600'	300 sx circulate
8"	5"	25	2500'	800 sx

We propose to drill and test the Yates and Seven Rivers formations. Approximately 600 feet of 8 5/8" casing will be run and cement circulated. 5 1/2" casing will be set at 2500 feet and cemented with approximately 800 sacks cement. We will then perforate and free for production.



IN ABOVE SPACE DESCRIBE PROPOSED PROGRAM: If proposal is to deepen or plug back, give data on present productive well and proposed new productive well. If proposal is to drill or deepen directionally, give pertinent data on subsurface locations and measured and true vertical depths. Give blowout prevention program, if any.

SIGNED

TITLE Coordinator

DATE 3-7-84

(This space for Federal or State office use)

PERMIT NO.

APPROVAL DATE

APPROVED BY  
CONDITIONS OF APPROVAL, IF ANY:

TITLE

AREA MANAGER  
CARLEAD 1-880

DATE

5-3-84

Post. a p 2  
20-1-27 BA.  
5-11-84

APPROVAL SUBJECT TO  
GENERAL REQUIREMENTS AND  
SPECIAL STIPULATIONS  
ATTACHED

**NEW MEXICO OIL CONSERVATION COMMISSION  
WELL LOCATION AND ACREAGE DEDICATION PLAT**

Form C-102  
Supersedes C-128  
Effective 1-1-65

All distances must be from the outer boundaries of the Section.

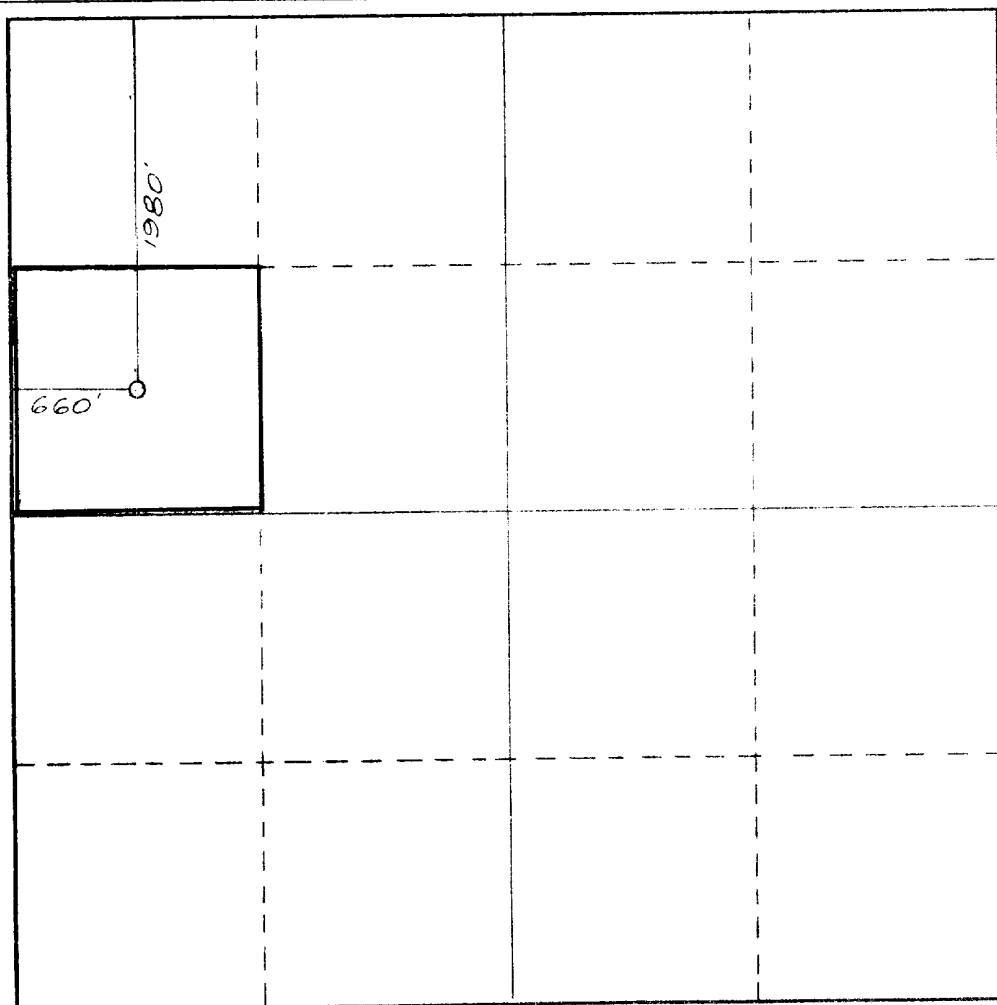
Operator <b>RAY WESTALL</b>		Lease <b>Amoco Federal #</b>		Well No. <b>1</b>
Unit Letter <b>E</b>	Section <b>21</b>	Township <b>19 South</b>	Range <b>31 East</b>	County <b>Eddy</b>
Actual Footage Location of Well: <b>1980</b> feet from the <b>North</b> line and <b>660</b> feet from the <b>West</b> line				
Ground Level Elev. <b>3476.</b>	Producing Formation <b>Yates/7 Rivers</b>	Pool <b>N. Hackberry - Y-SR</b>	Dedicated Acreage: <b>40</b> Acres	

1. Outline the acreage dedicated to the subject well by colored pencil or hachure marks on the plat below.
2. If more than one lease is dedicated to the well, outline each and identify the ownership thereof (both as to working interest and royalty).
3. If more than one lease of different ownership is dedicated to the well, have the interests of all owners been consolidated by communitization, unitization, force-pooling, etc?

☐ Yes ☐ No If answer is "yes," type of consolidation \_\_\_\_\_

If answer is "no," list the owners and tract descriptions which have actually been consolidated. (Use reverse side of this form if necessary.) \_\_\_\_\_

No allowable will be assigned to the well until all interests have been consolidated (by communitization, unitization, forced-pooling, or otherwise) or until a non-standard unit, eliminating such interests, has been approved by the Commission.



**CERTIFICATION**

I hereby certify that the information contained herein is true and complete to the best of my knowledge and belief.

Name

**Ray Westall**

Position

**Operator**

Company

Date

**3/9/84**

I hereby certify that the well location shown on this plat was plotted from field notes of actual surveys made by me or under my supervision, and that the same is true and correct to the best of my knowledge and belief.

Date Surveyed

**February 22, 1984**

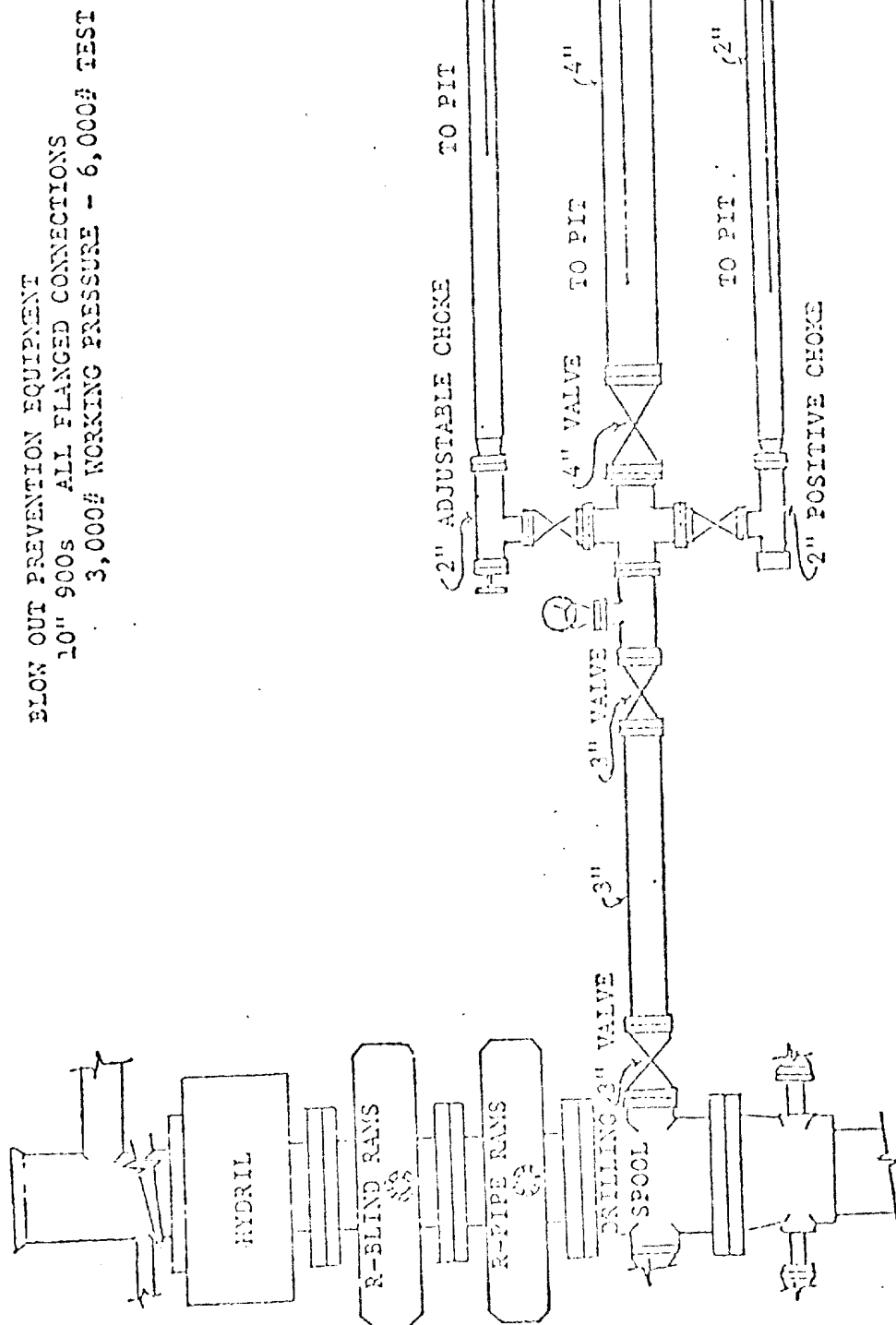
Registered Professional Engineer and/or Land Surveyor

*Sam B. Reddy*

Certificate No.

**NM PE&LS #5412**

0 330 660 990 1320 1650 1980 2310 2640 2000 1500 1000 500 0



ATTACHMENT TO FORM C-101

3. The estimated depths at which anticipated water, oil and gas formations are expected to be encountered:

Water: 180

Oil and gas zones listed above in item 2

4. Proposed Casing Program: See form 9-331C

5. Pressure Control Equipment: See form 9-331C and Exhibit E

6. Mud Program: Mud up 100' before TD and circulate 7 hours after TD and pull drill pipe laying down and run casing.

7. Auxiliary Equipment: N/A

8. Testing, Logging and Coring Program: Logging open hole, running gamma ray, and cement bond log.

9. No abnormal pressures or temperatures are anticipated.

10. Anticipated Starting Date: As soon as possible.

PROPOSED ROAD

AMOCO FEDERAL NO. 1  
660 FNL; 1980 FNL  
SEC. 21, T19S, R31E

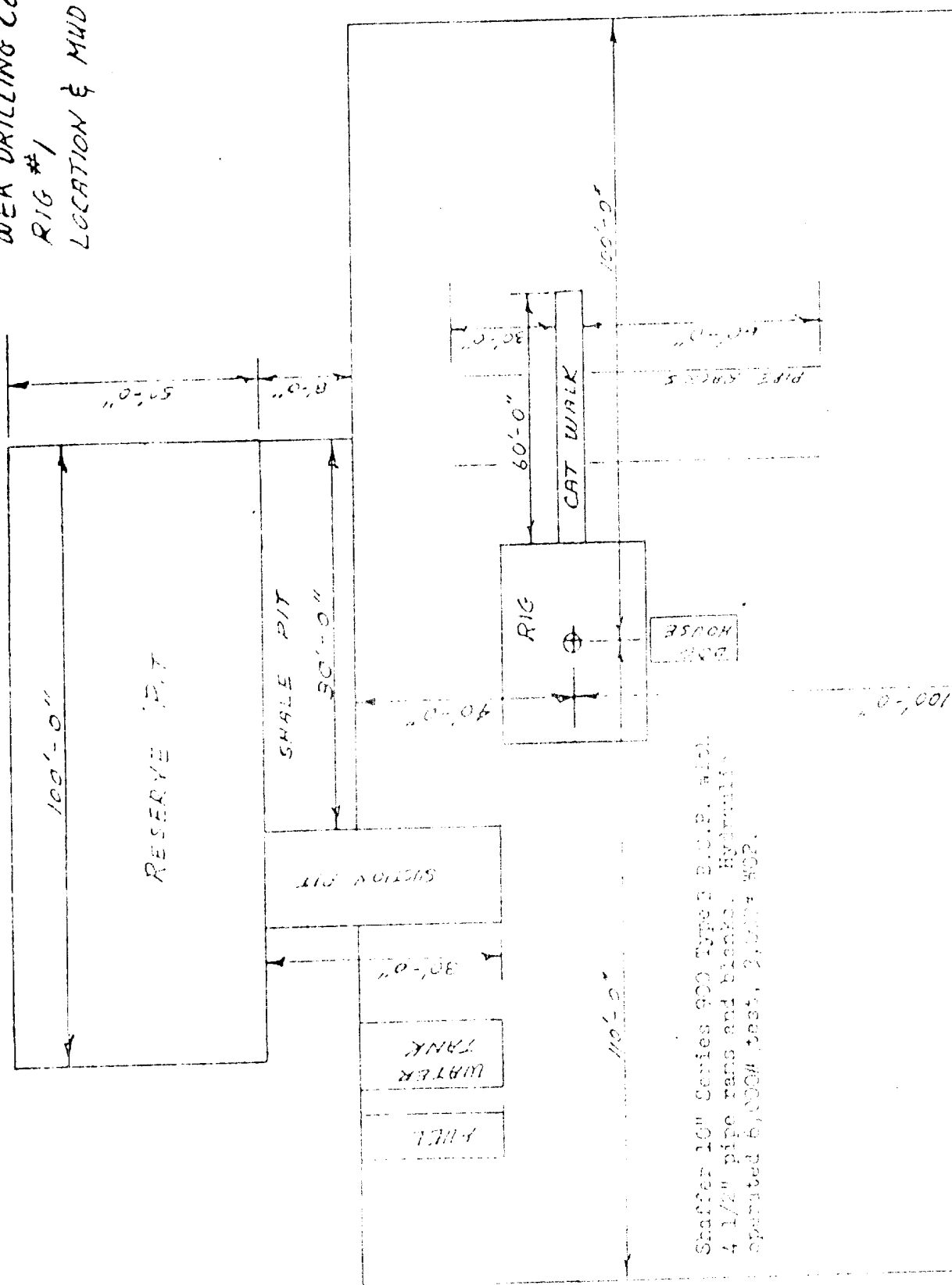
HILL FEDERAL NO. 1  
660 FNL; 1980 FNL  
SEC. 21, T19S, R31E

EDDY COUNTY ROAD  
NO. 222

PREPARED FOR: RAY WESTALL

316184

WEK DRILLING CO., INC.  
 RIG #1  
 LOCATION & MUD PIT SPEC



Shaffer 10" Series 900 Type 3 B.O.P. with  
 4 1/2" pipe rams and blanks. Hydraulic  
 operated 6,000# test, 2,000# WOP.