

RECEIVED BY
SUBMIT IN TRIP
JUL 13 1984
(Other instructions on reverse side)
O. C. D.
ARTESIA OFFICE

30-013-24727

Form approved.
Budget Bureau No. 42-R1425.

UNITED STATES
DEPARTMENT OF THE INTERIOR
GEOLOGICAL SURVEY

APPLICATION FOR PERMIT TO DRILL, DEEPEN, OR PLUG BACK

1a. TYPE OF WORK
DRILL ☒ DEEPEN ☐ PLUG BACK ☐

b. TYPE OF WELL
OIL WELL ☒ GAS WELL ☐ OTHER ☐
SINGLE ZONE ☐ MULTIPLE ZONE ☐

2. NAME OF OPERATOR
Siete Oil and Gas Corporation

3. ADDRESS OF OPERATOR
Post Office Box 2523, Roswell, New Mexico 88201

4. LOCATION OF WELL (Report location clearly and in accordance with any State requirements.)
At surface 2310 FNL 2310 FEL
At proposed prod. zone Same

14. DISTANCE IN MILES AND DIRECTION FROM NEAREST TOWN OR POST OFFICE*
14.6 miles southeast of Loco Hills, New Mexico

10. DISTANCE FROM PROPOSED*
LOCATION TO NEAREST
PROPERTY OR LEASE LINE, FT.
(Also to nearest drlg. unit line, if any) 2310'

18. DISTANCE FROM PROPOSED LOCATION*
TO NEAREST WELL, DRILLING, COMPLETED,
OR APPLIED FOR, ON THIS LEASE, FT. 1980'

21. ELEVATIONS (Show whether DF, RT, GR, etc.)
3726 GR

16. NO. OF ACRES IN LEASE
320

19. PROPOSED DEPTH
6400'

17. NO. OF ACRES ASSIGNED
TO THIS WELL
40

20. ROTARY OR CABLE TOOLS
Rotary

22. APPROX. DATE WORK WILL START*
July 15, 1984

23. PROPOSED CASING AND CEMENTING PROGRAM

SIZE OF HOLE	SIZE OF CASING	WEIGHT PER FOOT	SETTING DEPTH	QUANTITY OF CEMENT
12 1/4"	8 5/8"	24#	800'	400 sxs. Class "C" CIRCULATE
7 7/8"	4 1/2"	10.5#	6400'	400 sxs. Class "C"

Selectively perforate and treat Pay zone

Attachments:

Survey Plat (C-102)
Supplemental Drilling Data
Surface Use Plan



Post ID-1
7-20-84
API + AK

IN ABOVE SPACE DESCRIBE PROPOSED PROGRAM: If proposal is to deepen or plug back, give data on present productive zone and proposed new productive zone. If proposal is to drill or deepen directionally, give pertinent data on subsurface locations and measured and true vertical depths. Give blowout preventer program, if any.

24. SIGNED [Signature] TITLE President DATE 6/20/84
(This space for Federal or State office use)

PERMIT NO. _____ APPROVAL DATE _____
APPROVED BY Don Wood AREA MANAGER
CONDITIONS OF APPROVAL, IF ANY: _____ TITLE CARLSBAD RESOURCE AREA

DATE 7-12-84
APPROVAL SUBJECT TO
GENERAL REQUIREMENTS AND
SPECIAL STIPULATIONS
ATTACHED

NEW MEXICO OIL CONSERVATION COMMISSION
WELL LOCATION AND ACREAGE DEDICATION PLAT

Form C-102
Supersedes C-128
Effective 1-1-65

All distances must be from the outer boundaries of the Section.

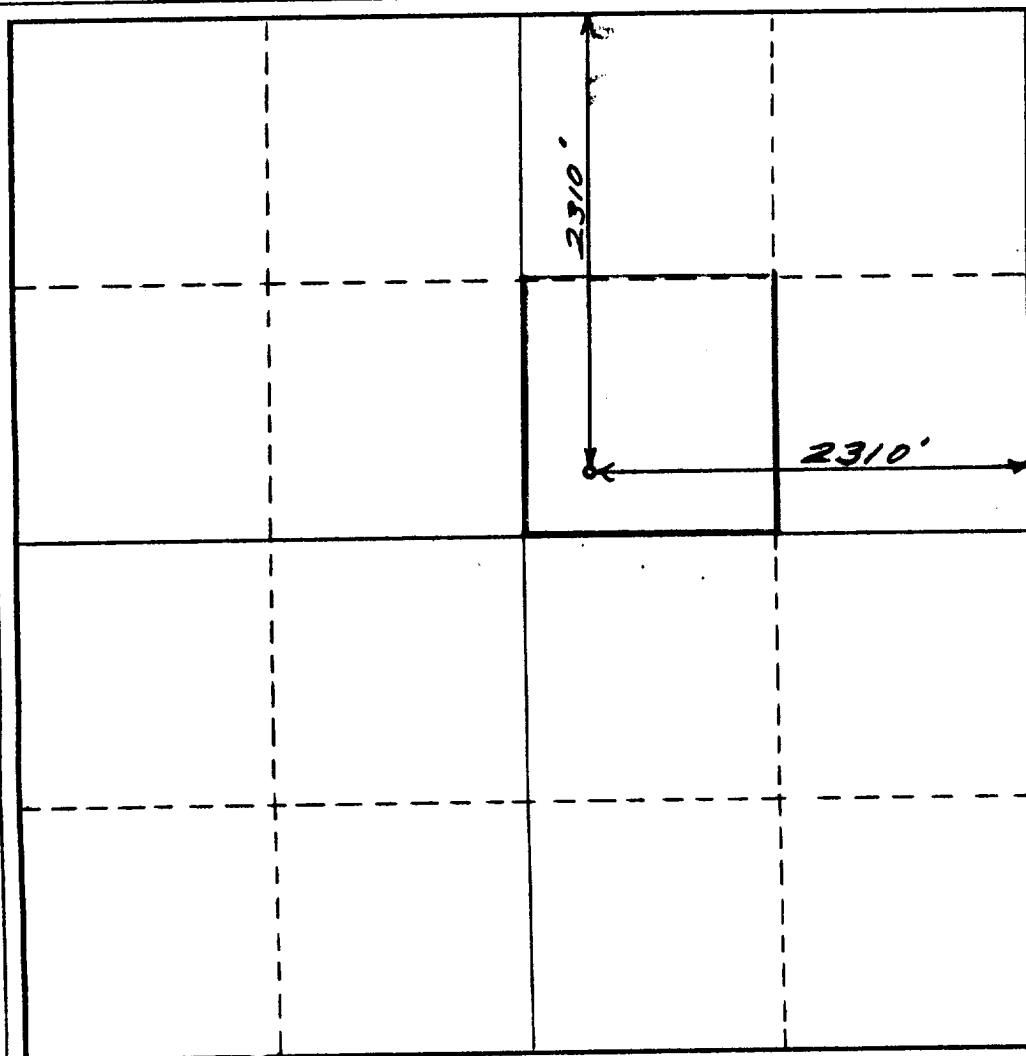
Operator Siete Oil & Gas Corp.			Lease Geronimo Federal		Well No. 1
Unit Letter G	Section 24	Township 18 South	Range 31 East	County Eddy	
Actual Footage Location of Well: 2310 feet from the North line and 2310 feet from the East line					
Ground Level Elev: 3726	Producing Formation Delaware	Pool <i>Wildcat - 1 name</i>		Dedicated Acreage: 40 Acres	

1. Outline the acreage dedicated to the subject well by colored pencil or hachure marks on the plat below.
2. If more than one lease is dedicated to the well, outline each and identify the ownership thereof (both as to working interest and royalty).
3. If more than one lease of different ownership is dedicated to the well, have the interests of all owners been consolidated by communitization, unitization, force-pooling, etc?

☐ Yes ☐ No If answer is "yes," type of consolidation _____

If answer is "no," list the owners and tract descriptions which have actually been consolidated. (Use reverse side of this form if necessary.) _____

No allowable will be assigned to the well until all interests have been consolidated (by communitization, unitization, forced-pooling, or otherwise) or until a non-standard unit, eliminating such interests, has been approved by the Commission.



CERTIFICATION

I hereby certify that the information contained herein is true and complete to the best of my knowledge and belief.

Name
Billy G. Underwood, Jr.

Position
President

Company
Siete Oil and Gas Corporation

Date
June 20, 1984

I hereby certify that the well location shown on this plat was plotted from field notes of actual surveys made by me or under my supervision, and that the same is true and correct to the best of my knowledge and belief.

May 10, 1984

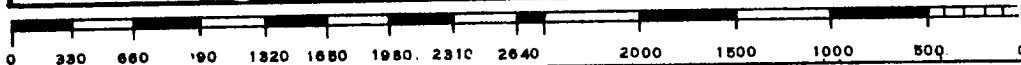
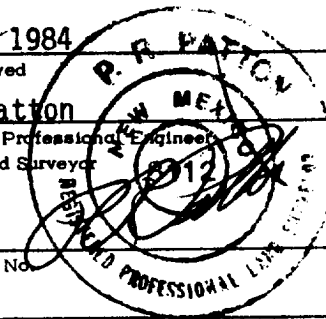
Date Surveyed

P. R. Patton

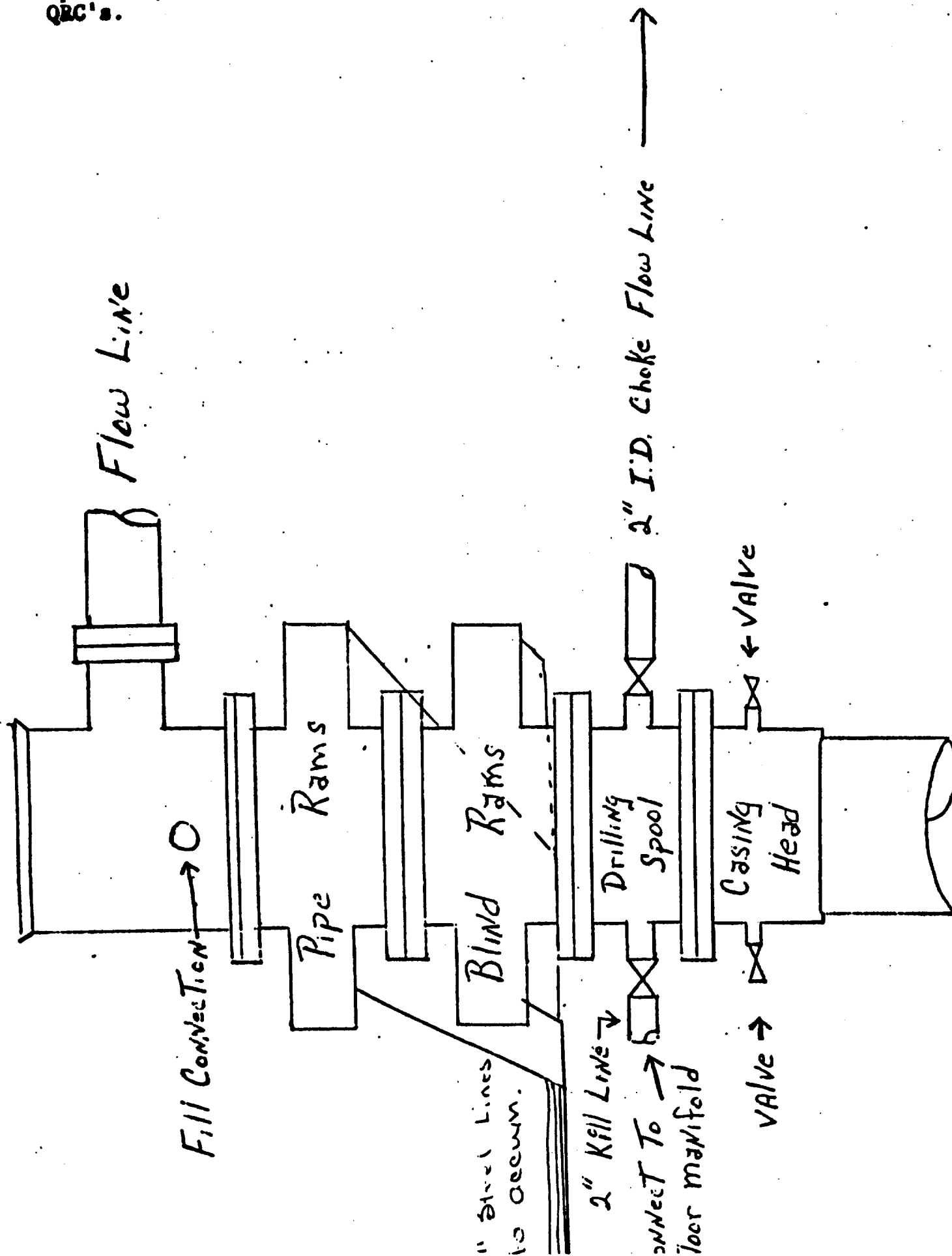
Registered Professional Engineer
and/or Land Surveyor

8112

Certificate No.



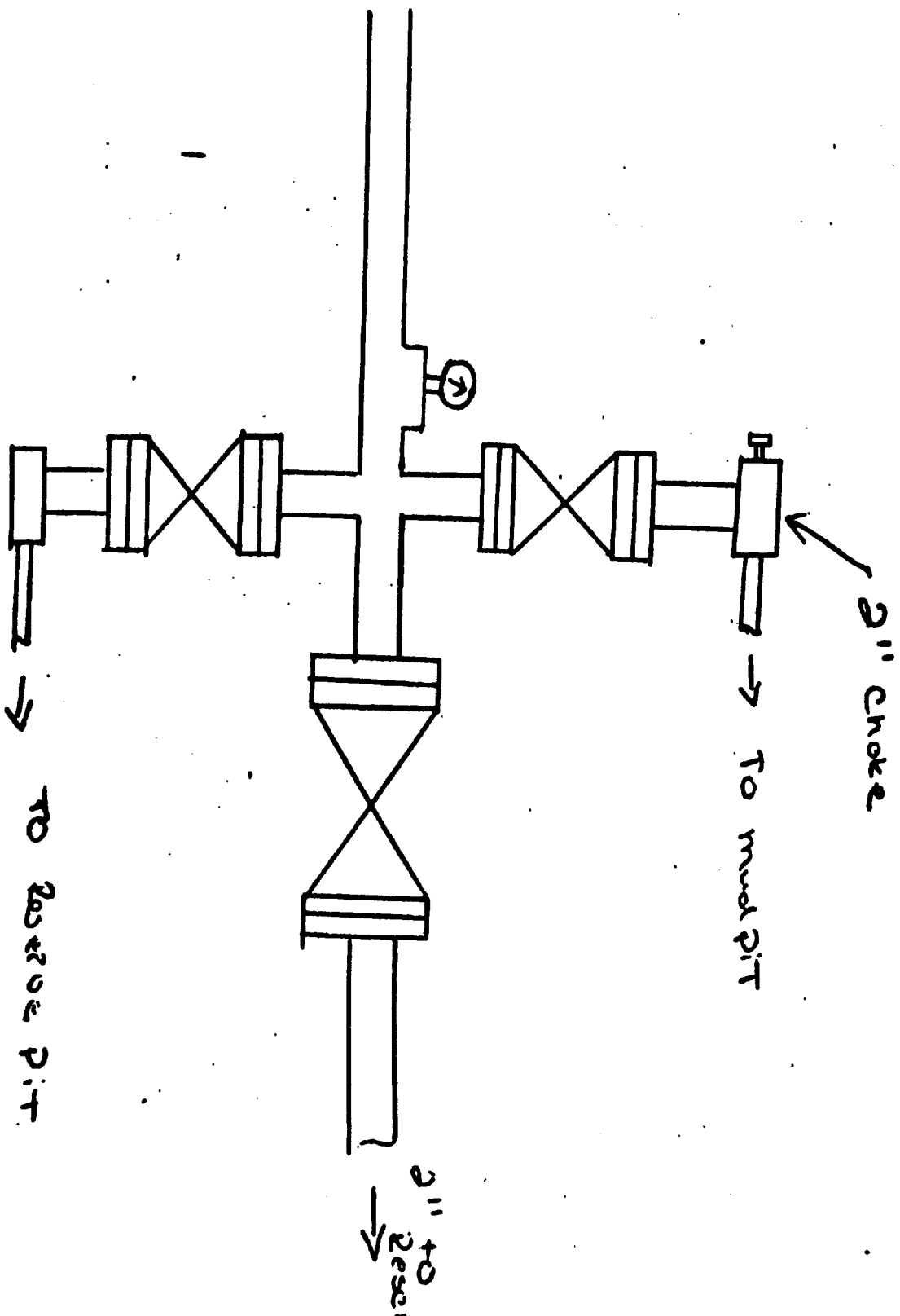
BOP Hookups for large casing.
 Pipe & Blind Rams are hydraulic
 operated, Cameron 10" 5000#
 QRC's.



Accumulator

air operated,
80 gal. reservoir

1st Steel lines to
P. 22 Rams & Blin
Rams



SUPPLEMENTAL DRILLING DATA
SIETE OIL AND GAS CORPORATION

RE: SIETE OIL AND GAS CORPORATION
Geronimo Federal #1
2310 FNL & 2310 FEL
Section 24: T-18-S, R-31-E
Eddy County, New Mexico

In conjunction with Form 9-331C, Application to Drill the subject well, Siete Oil and Gas Corporation submits the following ten items of pertinent information in accordance with U.S.G.S. requirements.

1. The geologic surface is Quaternary.
2. The estimated tops of geologic markers are as follows:

Yates	2355'
Queen	3480'
Penrose	3730'
Grayburg	3910'
Premier	4040'
San Andres	4070'
Delaware Mtn.	5040'
Bone Springs	6300'

3. The estimated depths at which anticipated water, oil or gas are expected to be encountered:

Water:	Approximately 200'
Oil or Gas:	Delaware approximately 5040' - 6300'

4. Proposed casing program: (see Form 9-331C)

<u>Size</u>	<u>Interval</u>	<u>Weight</u>	<u>Grade</u>	<u>Joint</u>	<u>New or Used</u>
8 5/8"	0-800'	24#	K-55	S.T.&C.	New
4 1/2"	0-6400"	10.5#	J-55	S.T.&C.	New

5. Pressure Control Equipment: The blowout preventer will be an annular type preventer. A sketch is attached.
6. Mud program: A copy of the mud program to be used is attached.
7. Auxiliary equipment: Master valve on blowout preventer.
8. Testing, Logging and Coring Programs:

Possible drillstem tests and/or coring is planned through the Delaware.
Logging: Compensated Neutron-Formation Density-Gamma Ray-Caliper
Dual Laterolog-Rxo

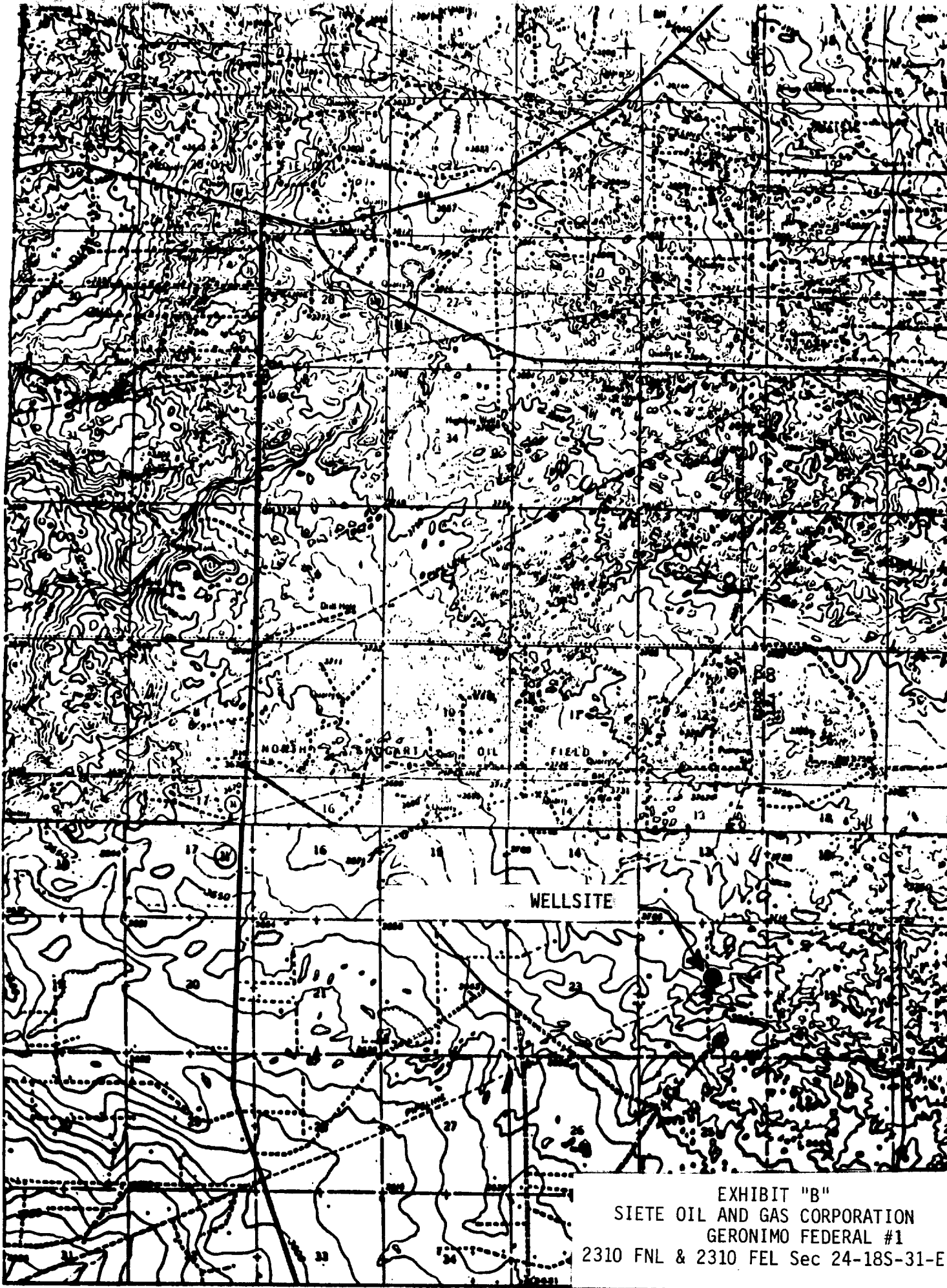


EXHIBIT "B"
SIETE OIL AND GAS CORPORATION
GERONIMO FEDERAL #1
2310 FNL & 2310 FEL Sec 24-18S-31-E

TOPOGRAPHIC MAP

Young Drilling Co.

P.O. BOX 717

FARMINGTON, NEW MEXICO 87401

(505) 327-8218

RIG #4

