

Drawer DD
Artesia, NM 882UNITED STATES
DEPARTMENT OF THE INTERIOR
GEOLOGICAL SURVEYRECEIVED BY
SUBMITTER TO INDICATE*
(Other instructions on
reverse side)Form approved.
Budget Bureau No. 42-R1425.

30-015-24985

5. LEASE DESIGNATION AND SERIAL NO.

NM 33953

6. IF INDIAN, ALLOTTEE OR TRIBE NAME

7. UNIT AGREEMENT NAME

8. FARM OR LEASE NAME

AMOCO FEDERAL
9. WELL NO.

10. FIELD AND POOL, OR WILDCAT

Wind. North
HACKBERRY - V-SR11. SEC., T., R., M., OR BLK.
AND SURVEY OR AREA

Sec 21 T19S R31E

12. COUNTY OR PARISH 13. STATE

Eddy

NM

1a. TYPE OF WORK

DRILL ☒DEEPEN ☐PLUG BACK ☐

b. TYPE OF WELL

OIL
WELL ☒GAS
WELL ☐

OTHER

SINGLE
ZONE ☒MULTIPLE
ZONE ☐

2. NAME OF OPERATOR

RAY WESTALL

3. ADDRESS OF OPERATOR

BOX 4, LOCO HILLS, NEW MEXICO 88255

4. LOCATION OF WELL (Report location clearly and in accordance with any State requirements.*)
At surface

At proposed prod. zone

Unit Letter F, 1980 FNL 1870 FWL

14. DISTANCE IN MILES AND DIRECTION FROM NEAREST TOWN OR POST OFFICE*

10 Miles South of Loco Hills, N.M.

15. DISTANCE FROM PROPOSED*

LOCATION TO NEAREST
PROPERTY OR LEASE LINE, FT.
(Also to nearest drlg. unit line, if any) 1980

16. NO. OF ACRES IN LEASE

160

17. NO. OF ACRES ASSIGNED
TO THIS WELL

40

18. DISTANCE FROM PROPOSED LOCATION*
TO NEAREST WELL, DRILLING, COMPLETED,
OR APPLIED FOR, ON THIS LEASE, FT. 1220'

19. PROPOSED DEPTH

2400'

20. ROTARY OR CABLE TOOLS

Rotary

21. ELEVATIONS (Show whether DF, RT, GR, etc.)

3494

22. APPROX. DATE WORK WILL START*

ASAP

23. PROPOSED CASING AND CEMENTING PROGRAM

SIZE OF HOLE	SIZE OF CASING	WEIGHT PER FOOT	SETTING DEPTH	QUANTITY OF CEMENT
12 1/4"	8 5/8	30#	350	Circulate
8"	5 1/2	24#	2400	500 Sx

We propose to drill and test the Yates formation. Approximately 350 feet of 8 5/8" casing will be run and cemented to surface. 5 1/2" casing will be set at 2400' and cemented with approximately 500 sx cement. We will then perforate and frac for production.

IN ABOVE SPACE DESCRIBE PROPOSED PROGRAM: If proposal is to deepen or plug back, give data on present productive zone and proposed new productive zone. If proposal is to drill or deepen directionally, give pertinent data on subsurface locations and measured and true vertical depths. Give blowout preventer program, if any.

24.

SIGNED

Ray Westall

TITLE Operator

DATE 8/21/84

(This space for Federal or State office use)

PERMIT NO.

APPROVAL DATE

APPROVED BY

TITLE

AREA MANAGER

CARLSBAD REVENUE

DATE

CONDITIONS OF APPROVAL, IF ANY:

APPROVAL SUBJECT TO
GENERAL REQUIREMENTS AND
SPECIAL STIPULATIONS

ATTACHED

Posted ID
APRIL 2004
8-31-84

NEW MEXICO OIL CONSERVATION COMMISSION
WELL LOCATION AND ACREAGE DEDICATION PLAT

Form C-102
 Supersedes C-128
 Effective 1-1-65

All distances must be from the outer boundaries of the Section.

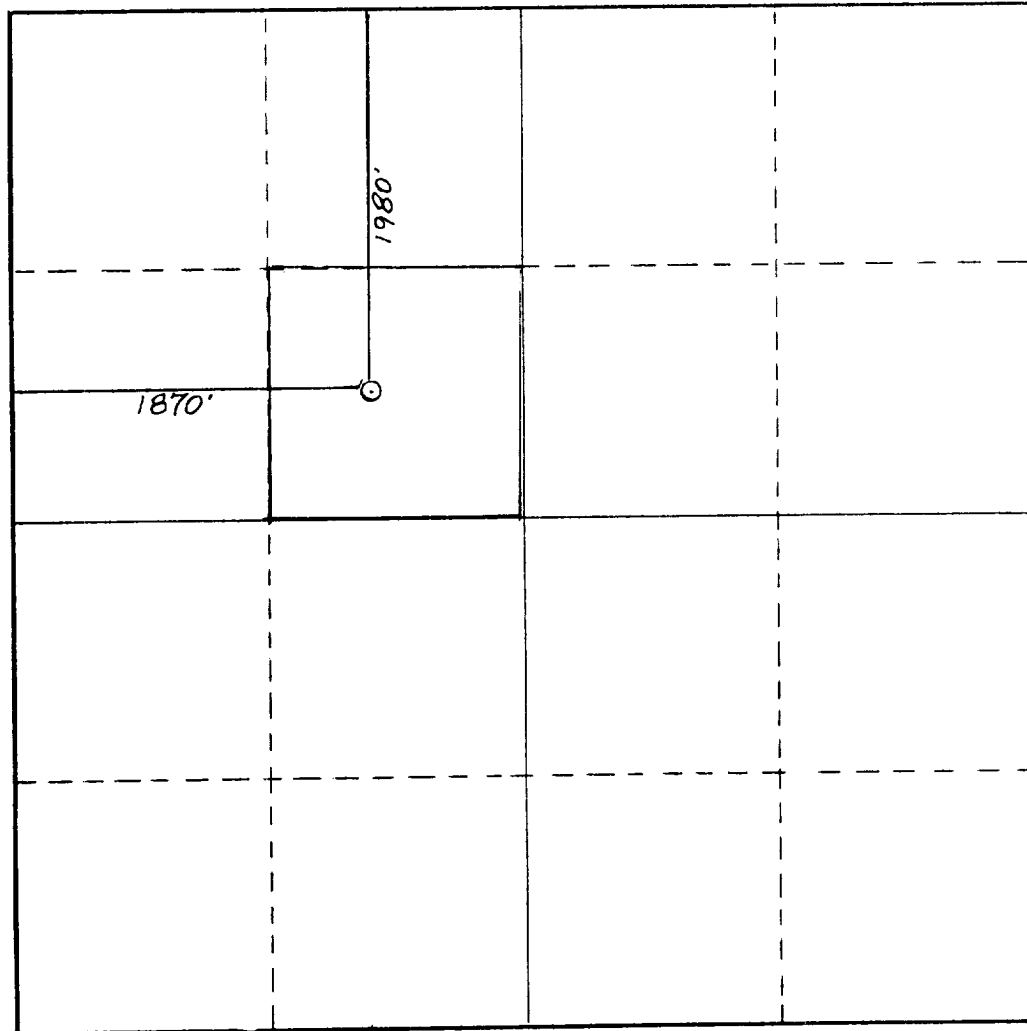
Operator RAY WESTALL			Lease AMOCO		Well No. 2
Unit Letter F	Section 21	Township 19 South	Range 31 East	County Eddy	
Actual Footage Location of Well: 1980 feet from the North line and 1870 feet from the West line					
Ground Level Elev. 3494.	Producing Formation Yates		Pool Hackberry		Dedicated Acreage: 40 Acres

1. Outline the acreage dedicated to the subject well by colored pencil or hachure marks on the plat below.
2. If more than one lease is dedicated to the well, outline each and identify the ownership thereof (both as to working interest and royalty).
3. If more than one lease of different ownership is dedicated to the well, have the interests of all owners been consolidated by communitization, unitization, force-pooling, etc?

☐ Yes ☐ No If answer is "yes," type of consolidation _____

If answer is "no," list the owners and tract descriptions which have actually been consolidated. (Use reverse side of this form if necessary.) _____

No allowable will be assigned to the well until all interests have been consolidated (by communitization, unitization, forced-pooling, or otherwise) or until a non-standard unit, eliminating such interests, has been approved by the Commission.



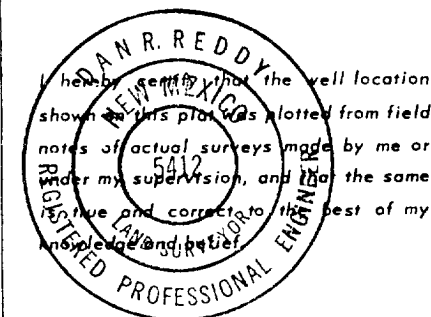
CERTIFICATION

I hereby certify that the information contained herein is true and complete to the best of my knowledge and belief.

Name: *Ray Westall*
 Position: **Operator**

Company: **Ray Westall**

Date: **8-21-84**

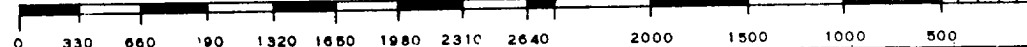


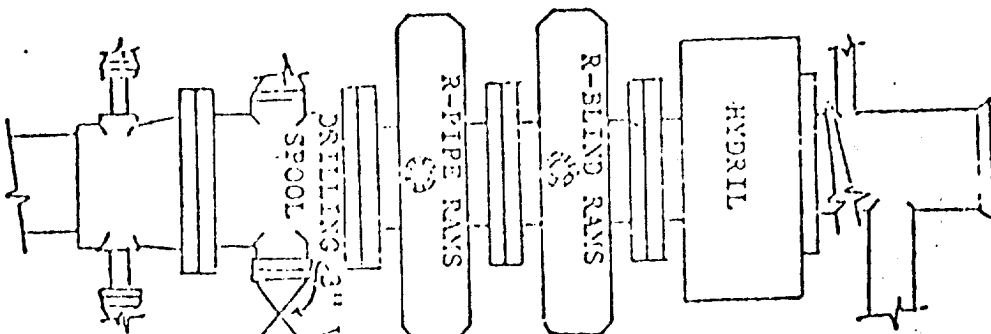
Date Surveyed
August 4, 1984

Registered Professional Engineer
 and/or Land Surveyor

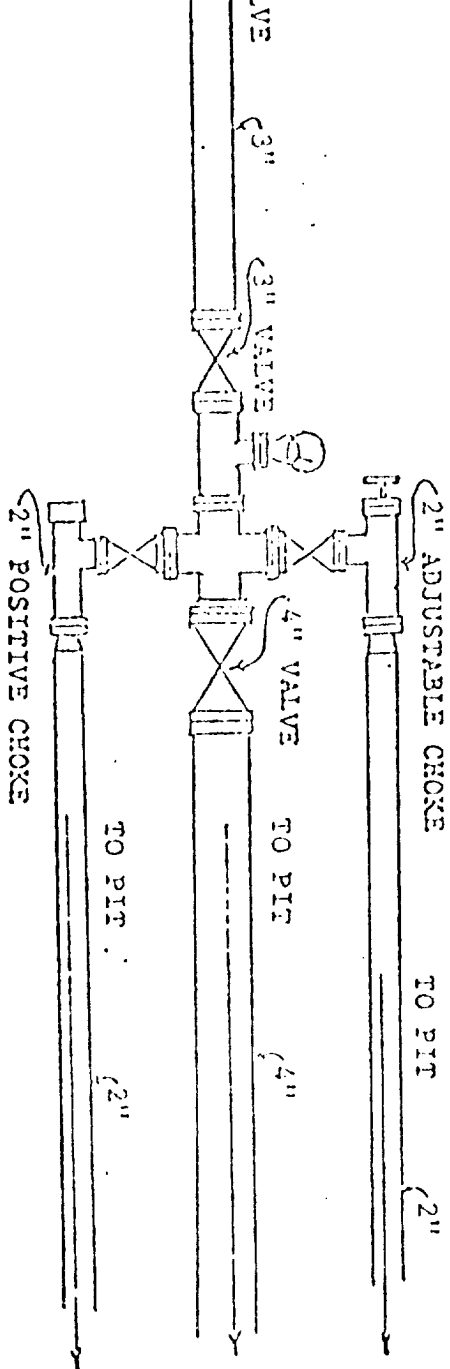
Dan R. Reddy
 Certificate No.

NM PE&LS #5412





BLOW OUT PREVENTION EQUIPMENT
 10" 900s ALL FLANGED CONNECTIONS
 3,000# WORKING PRESSURE - 6,000# TEST



ATTACHMENT TO FORM C-101

APPLICATION FOR DRILLING

RAY WESTALL

In conjunction with the form 9-331C, application for permit to drill subject wells, Ray Westall submits the following ten items of pertinent information in accordance with USGS requirements:

1. The Geological surface formation is quaternary.
2. The estimated tops of geologic markers are as follows:
Yates 2050
7 Rivers 2500
3. The estimated depths at which anticipated water, oil and gas formations are expected to be encountered:
Water 130
Oil and gas zones listed above in item 2
4. Proposed Casing Program: See form 9-331c
5. Pressure Control Equipment: See form 9-331C and exhibit E
6. Mud Program: Mud up 100' before TD and circulate 2 hours after TD and pull drill pipe laying down and run casing.
7. Auxiliary Equipment: N/A
8. Testing, Logging and Coring Program: Logging open hole, running gamma ray, and cement bond log.
9. No abnormal pressures or temperatures are anticipated.
10. Anticipated Starting Date: As soon as possible.

DESIGNATION OF OPERATOR

The undersigned is, on the records of the Bureau of Land Management, holder of lease

DISTRICT LAND OFFICE: Santa Fe, New Mexico
SERIAL NO.: NM-33953

and hereby designates

NAME: Ray Westall
ADDRESS: P. O. Box 4, Loco Hills, New Mexico 88255

as his operator and local agent, with full authority to act in his behalf in complying with the terms of the lease and regulations applicable thereto and on whom the supervisor or his representative may serve written or oral instructions in securing compliance with the Operating Regulations with respect to (describe acreage to which this designation is applicable):

T-19-S, R-31-E, N.M.P.M.

Section 21: E/2 NW/4

It is understood that this designation of operator does not relieve the lessee of responsibility for compliance with the terms of the lease and the Operating Regulations. It is also understood that this designation of operator does not constitute an assignment of any interest in the lease.

In case of default on the part of the designated operator, the lessee will make full and prompt compliance with all regulations, lease terms, or orders of the Secretary of the Interior or his representative.

The lessee agrees promptly to notify the supervisor of any change in the designated operator.

Amoco Production Company



By: _____

(Signature of lessee)

Attorney-in-Fact

April 12, 1984
(Date)

P. O. Box 3092, Houston, Texas 77253
(Address)

