

STATE OF NEW MEXICO
ENERGY AND MINERALS DEPARTMENT

OIL CONSERVATION DIVISION

P. O. BOX 2088

SANTA FE, NEW MEXICO 8750

OCT 09 1984

O. C. D.
ARTESIA, OFFICE

30-015-25048
Form C-101
Revised 10-1-78

NO. OF COPIES RECEIVED	
DISTRIBUTION	
SANTA FE	
FILE	
U.S.G.S.	2
LAND OFFICE	
OPERATOR	

5A. Indicate Type of Lease
STATE ☒ FCC ☐

5. State Oil & Gas Lease No.
LG-2720

APPLICATION FOR PERMIT TO DRILL, DEEPEN, OR PLUG BACK

1. Type of Work
DRILL ☒ DEEPEN ☐ PLUG BACK ☐

2. Type of Well
OIL WELL ☐ GAS WELL ☒ OTHER ☐ SINGLE ZONE ☐ MULTIPLE ZONE ☐

3. Name of Operator
YATES PETROLEUM CORPORATION

4. Address of Operator
207 South 4th Street, Artesia, New Mexico 88210

6. Location of Well
UNIT LETTER B LOCATED 990 FEET FROM THE North LINE
1980 FEET FROM THE East LINE OF SEC. 24 TWP. 19S RGE. 23E NMPM

7. Unit Agreement Name

8. Farm or Lease Name
Triangle Ranch "AAB" State

9. Well No.
1

10. Field and Pool, or Wildcat
Undes. Morrow

12. County
Eddy

19. Proposed Depth
8600'

19A. Formation
Morrow

20. Rotary or C.T.
Rotary

1. Elevations (show whether DF, RT, etc.)
3833' GL

21A. Kind & Status Plug. Bond
Blanket

21B. Drilling Contractor
Undesignated

22. Approx. Date Work will start
ASAP

PROPOSED CASING AND CEMENT PROGRAM

SIZE OF HOLE	SIZE OF CASING	WEIGHT PER FOOT	SETTING DEPTH	SACKS OF CEMENT	EST. TOP
17 1/2"	13 3/8"	48# H-40	appr. 350'	300 sx	circ.
12 1/4"	8 5/8"	24# J-55	appr. 1150'	850 sx	circ.
7 7/8"	5 1/2" or 4 1/2"	15.5-17# 19.5-11.6#	TD	400 sx	

We propose to drill and test the Mississippian lime and intermediate horizons. Will set approximately 350' of surface casing to shut off gravel and caving and will set intermediate casing through the Glorieta Sand, both strings to be circulated. If commercial, will run 5 1/2" or 4 1/2" and cement with at least 600' of cover.

MUD PROGRAM: FW gel/LCM to 1150', water to 5700', starch/driskpak to 7900', SW gel/starch/driskpak to TD.

BOP PROGRAM: BOP's/hydril on 8 5/8" csg and tested, pipe rams tested daily, blind rams on trips; yellow jacket, pit level control and flow sensor on at 5200'.

GAS NOT DEDICATED.

APPROVAL VALID FOR 180 DAYS
PERMIT EXPIRES 4-12-85
UNLESS DRILLING UNDERWAY

ABOVE SPACE DESCRIBE PROPOSED PROGRAM IF PROPOSAL IS TO DEEPEN OR PLUG BACK, GIVE DATA ON PRESENT PRODUCTIVE ZONE AND PROPOSED NEW PRODUCTIVE ZONE. GIVE BLOWOUT PREVENTER PROGRAM, IF ANY.

I hereby certify that the information above is true and complete to the best of my knowledge and belief.

Signed Larry Brooks Title Regulatory Agent Date 10-9-84

(This space for State Use)

ORIGINAL SIGNED
BY LARRY BROOKS
GEOLOGIST - NMOCD

APPROVED BY _____ DATE OCT 11 1984

CONDITIONS OF APPROVAL, IF ANY:

Notify N.M.O.C.C. in sufficient
time to witness cementing
the 8 5/8 casing

NEW MEXICO OIL CONSERVATION COMMISSION
WELL LOCATION AND ACREAGE DEDICATION PLAT

Form C-102
Supersedes C-128
Effective 1-1-65

All distances must be from the outer boundaries of the Section.

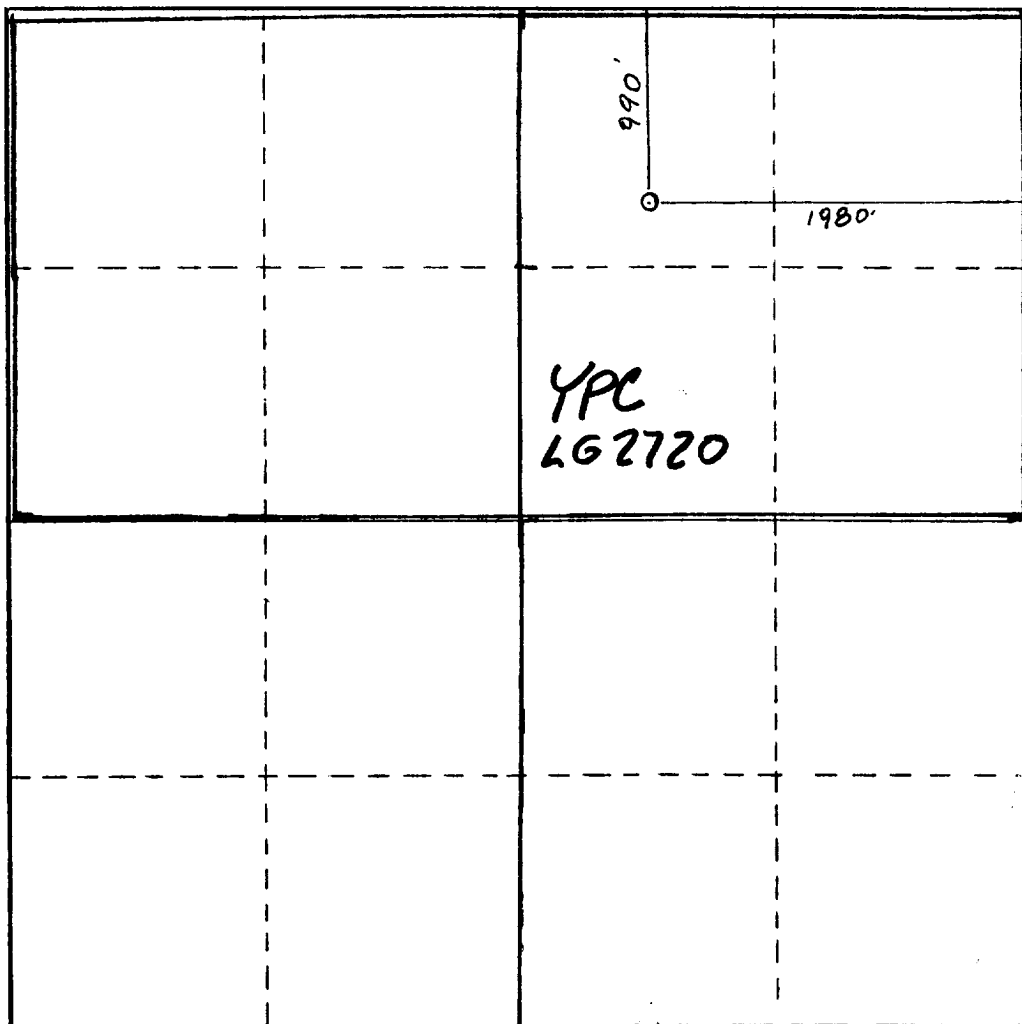
Operator YATES PETROLEUM CORPORATION			Lease Triangle Ranch AAB State		Well No. 1
Unit Letter B	Section 24	Township 19 South	Range 23 East	County Eddy	
Actual Footage Location of Well: 990 feet from the North line and 1980 feet from the East line					
Ground Level Elev. 3833.	Producing Formation Morrow		Pool Unders Morrow	Dedicated Acreage: 320 Acres	

1. Outline the acreage dedicated to the subject well by colored pencil or hatchure marks on the plat below.
2. If more than one lease is dedicated to the well, outline each and identify the ownership thereof (both as to working interest and royalty).
3. If more than one lease of different ownership is dedicated to the well, have the interests of all owners been consolidated by communitization, unitization, force-pooling, etc?

☐ Yes ☐ No If answer is "yes," type of consolidation _____

If answer is "no," list the owners and tract descriptions which have actually been consolidated. (Use reverse side of this form if necessary.) _____

No allowable will be assigned to the well until all interests have been consolidated (by communitization, unitization, forced-pooling, or otherwise) or until a non-standard unit, eliminating such interests, has been approved by the Commission.



CERTIFICATION

I hereby certify that the information contained herein is true and complete to the best of my knowledge and belief.

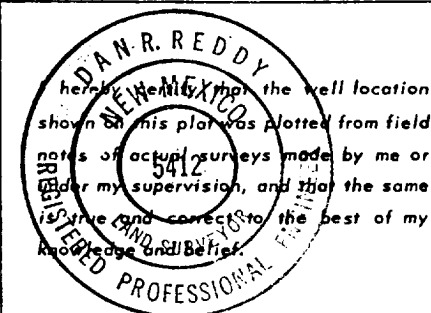
Cy Cowan

Name
Cy Cowan

Position
Regulatory Agent

Company
Yates Petroleum Corporation

Date
10-9-84

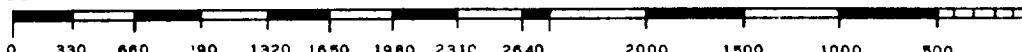


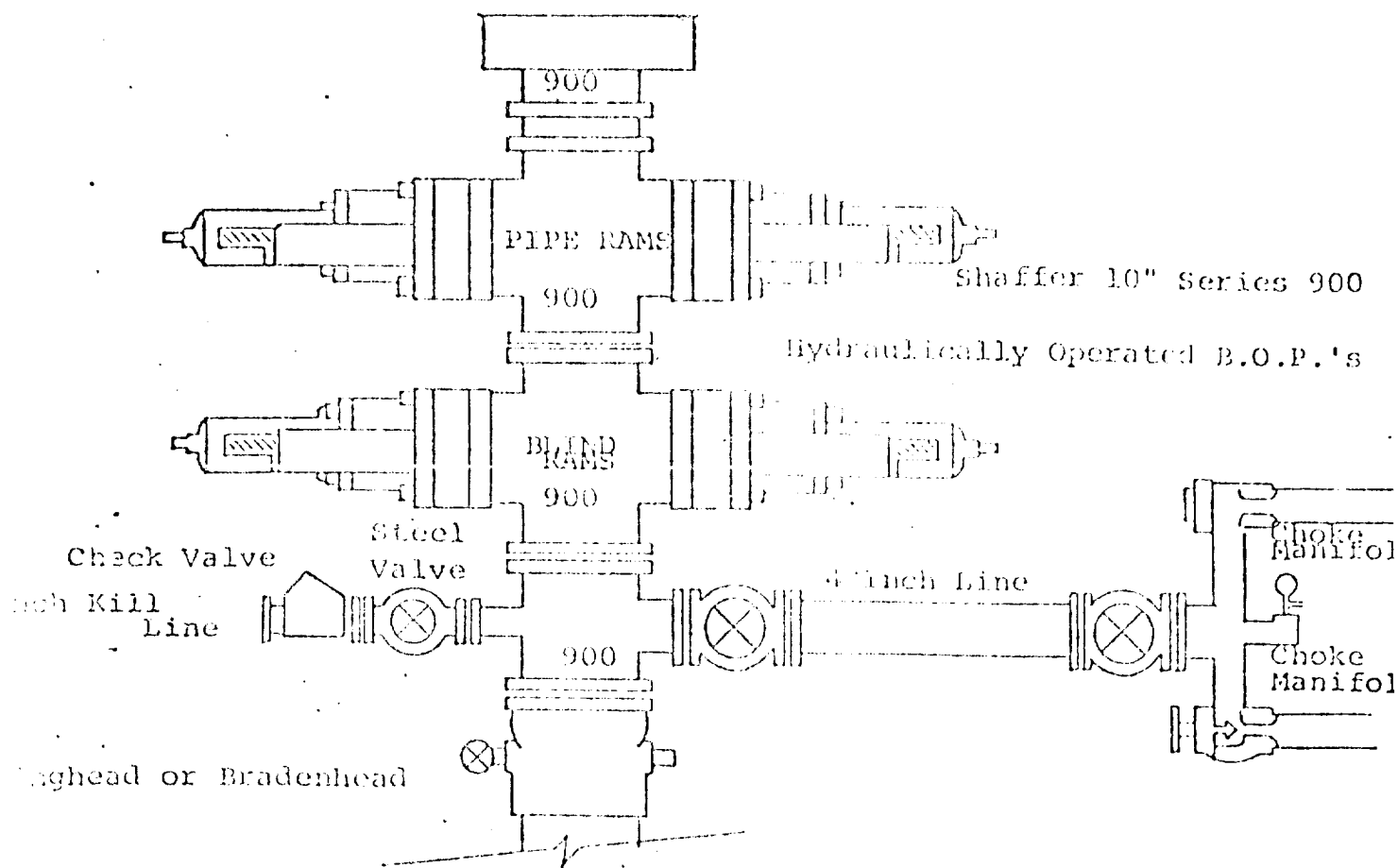
Date Surveyed
August 7, 1984

Registered Professional Engineer
and/or Land Surveyor

Dan R. Reddy

Certificate No.
NM PE&LS #5412





FOLLOWING CONSTITUTE MINIMUM BLOWOUT PREVENTER REQUIREMENTS

- All preventers to be hydraulically operated with secondary manual control installed prior to drilling out from under casing.
- Choke outlet to be a minimum of 4" diameter.
- Kill line to be of all steel construction of 2" minimum diameter.
- All connections from operating manifolds to preventers to be all steel.
- Hole or tube a minimum of one inch in diameter.
- The available closing pressure shall be at least 15% in excess of that required with sufficient volume to operate the B.O.P.'s.
- All connections to and from preventer to have a pressure rating equivalent to that of the B.O.P.'s.
- Inside blowout preventer to be available on rig floor.
- Operating controls located a safe distance from the rig floor.
- Hole must be kept filled on trips below intermediate casing. Operator not responsible for blowouts resulting from not keeping hole full.
- B. P. float must be installed and used below zone of first gas intrusion.