

**N MEXICO OIL CONSERVATION COMMISSION  
WELL LOCATION AND ACREAGE DEDICATION . LAT**

Form C-102  
Supersedes C-128  
Effective 1-1-85

All distances must be from the outer boundaries of the Section.

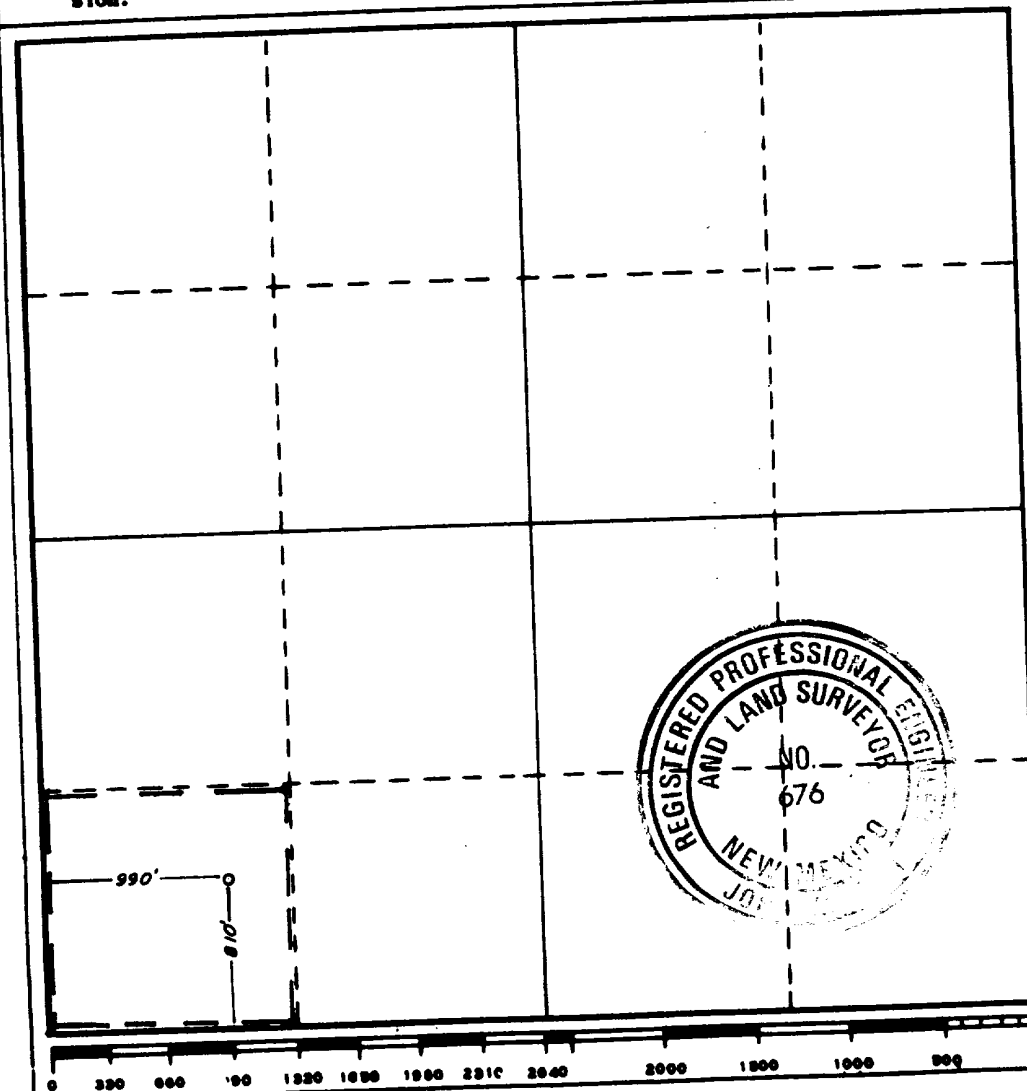
Operator <b>CONOCO, INC.</b>		Lease <b>TUESDAY FEDERAL</b>		Well No. <b>1</b>
Unit Letter <b>M</b>	Section <b>34</b>	Township <b>19S</b>	Range <b>29E</b>	County <b>EDDY</b>
Actual Footage Location of Well: <div style="display: flex; justify-content: space-between;"> <span>810 feet from the <b>SOUTH</b> line and</span> <span>990 feet from the <b>WEST</b> line</span> </div>				
Ground Level Elev. <b>3334.3</b>	Producing Formation <b>Wolfcamp</b>	Pool <b>Undesignated Wolfcamp</b>	Dedicated Acreage: <b>40</b> Acres	

1. Outline the acreage dedicated to the subject well by colored pencil or hatchure marks on the plat below.
2. If more than one lease is dedicated to the well, outline each and identify the ownership thereof (both as to working interest and royalty).
3. If more than one lease of different ownership is dedicated to the well, have the interests of all owners been consolidated by communitization, unitization, force-pooling, etc?

☐ Yes   ☐ No   If answer is "yes," type of consolidation \_\_\_\_\_

If answer is "no," list the owners and tract descriptions which have actually been consolidated. (Use reverse side of this form if necessary.) \_\_\_\_\_

No allowable will be assigned to the well until all interests have been consolidated (by communitization, unitization, forced-pooling, or otherwise) or until a non-standard unit, eliminating such interests, has been approved by the Commission.



**CERTIFICATION**

I hereby certify that the information contained herein is true and complete to the best of my knowledge and belief.

Name *Kurt L. Vogel*  
Position *Administrative Supervisor*  
Company *CONOCO INC.*  
Date *9-23-85*

I hereby certify that the well location shown on this plat was plotted from field notes of actual surveys made by me or under my supervision, and that the same is true and correct to the best of my knowledge and belief.

Date Surveyed *10/23/84*

Registered Professional Engineer and/or Land Surveyor

*John W. West*  
Certificate No. **JOHN W. WEST, 676**

**RONALD J. EIDSON, 3239**

District I  
1625 N. French Dr., Hobbs, NM 88240  
District II  
811 South First, Artesia, NM 88210  
District III  
1000 Rio Brazos Rd., Aztec, NM 87410  
District IV  
2040 South Pacheco, Santa Fe, NM 87505

State of New Mexico  
Energy, Minerals & Natural Resources

Form C-104  
Revised March 25, 1999

OIL CONSERVATION DIVISION  
2040 South Pacheco  
Santa Fe, NM 87505

Submit to Appropriate District Office  
5 Copies

☐ AMENDED REPORT

I. REQUEST FOR ALLOWABLE AND AUTHORIZATION TO TRANSPORT

<sup>1</sup> Operator name and Address Roswell, L.L.C. 1776 Lincoln Street, Suite 1100 Denver, CO 80203-1080		<sup>2</sup> OGRID Number 189740
		<sup>3</sup> Reason for Filing Code CH (effective 9/1/00)
<sup>4</sup> API Number 30 - 015-25123	<sup>5</sup> Pool Name Parkway Wolfcamp	<sup>6</sup> Pool Code 49637
<sup>7</sup> Property Code <del>19274</del> 26891	<sup>8</sup> Property Name Tuesday Federal	<sup>9</sup> Well Number 1

II. <sup>10</sup> Surface Location

UL or lot no.	Section	Township	Range	Lot Idn	Feet from the	North/South Line	Feet from the	East/West line	County
M	34	19S	29E		810	South	990	West	Eddy

<sup>11</sup> Bottom Hole Location

UL or lot no.	Section	Township	Range	Lot Idn	Feet from the	North/South line	Feet from the	East/West line	County
M	34	19S	29E		810	South	990	West	Eddy
<sup>12</sup> Lse Code F	<sup>13</sup> Producing Method Code Shut-in	<sup>14</sup> Gas Connection Date	<sup>15</sup> C-129 Permit Number	<sup>16</sup> C-129 Effective Date	<sup>17</sup> C-129 Expiration Date				

III. Oil and Gas Transporters

<sup>18</sup> Transporter OGRID	<sup>19</sup> Transporter Name and Address	<sup>20</sup> POD	<sup>21</sup> O/G	<sup>22</sup> POD ULSTR Location and Description

IV. Produced Water

<sup>23</sup> POD	<sup>24</sup> POD ULSTR Location and Description

V. Well Completion Data

<sup>25</sup> Spud Date	<sup>26</sup> Ready Date	<sup>27</sup> TD	<sup>28</sup> PBTD	<sup>29</sup> Perforations	<sup>30</sup> DHC, MC
<sup>31</sup> Hole Size		<sup>32</sup> Casing & Tubing Size		<sup>33</sup> Depth Set	<sup>34</sup> Sacks Cement

VI. Well Test Data

<sup>35</sup> Date New Oil	<sup>36</sup> Gas Delivery Date	<sup>37</sup> Test Date	<sup>38</sup> Test Length	<sup>39</sup> Tbg. Pressure	<sup>40</sup> Csg. Pressure
<sup>41</sup> Choke Size	<sup>42</sup> Oil	<sup>43</sup> Water	<sup>44</sup> Gas	<sup>45</sup> AOF	<sup>46</sup> Test Method

<sup>47</sup> I hereby certify that the rules of the Oil Conservation Division have been complied with and that the information given above is true and complete to the best of my knowledge and belief. Signature: <i>B. Lynne Ellison</i> Printed name: B. Lynne Ellison Title: Landman Date: 9/19/00 Phone: 303-863-4317		<b>OIL CONSERVATION DIVISION</b> Approved by: <b>ORIGINAL SIGNED BY TIM W. GUM</b> Title: <b>DISTRICT II SUPERVISOR</b> Approval Date: <b>NOV 27 2000</b>	
<sup>48</sup> If this is a change of operator fill in the OGRID number and name of the previous operator <b>OGRID# 154903 St. Mary Land &amp; Exploration Co.</b>			
Previous Operator Signature: <i>M. Randolph Pharo</i>		Printed Name: Milam Randolph Pharo	Title: Vice President - Land & Legal Date: 9/19/00