

STATE OF NEW MEXICO
ENERGY AND MINERALS DEPARTMENT

OIL CONSERVATION RECEIVED

P. O. BOX 2088

SANTA FE, NEW MEXICO 87501

RECEIVED BY

JAN 9 1985

O. C. D.
ARTESIA, OFFICE

Form C-101

Rev. 10-83

30-015-25160

5A. Indicate Type of Lease

STATE ☒

FEE ☐

5. State Oil & Gas Lease No.

B-8096

APPLICATION FOR PERMIT TO DRILL, DEEPEN, OR PLUG BACK

1a. Type of Work

DRILL ☒

ARTESIA, OFFICE

DEEPEN ☐

PLUG BACK ☐

b. Type of Well

OIL WELL ☒

GAS WELL ☐

OTHER

SINGLE ZONE ☒

MULTIPLE ZONE ☐

2. Name of Operator

Mitchell Energy Corporation

3. Address of Operator

P. O. Box 4000 The Woodlands, Texas 77387-4000

4. Location of Well

UNIT LETTER K LOCATED 1880 FEET FROM THE South LINE

AND 1980 FEET FROM THE West LINE OF SEC. 7 TWP. 19S RGE. 29E NMPM

7. Unit Agreement Name

N/A

8. Farm or Lease Name

Conoco -7- State

9. Well No.

12

10. Field and Pool, or Wildcat

East Millman - B-G

12. County

Eddy

19. Proposed Depth

3500'

19A. Formation

Grayburg

20. Rotary or C.T.

Rotary

21. Elevations (Show whether DF, RT, etc.)

3375' G.L.

21A. Kind & Status Plug. Bond

Active Blanket

21B. Drilling Contractor

Unknown

22. Approx. Date Work will start

2-1-85

23.

PROPOSED CASING AND CEMENT PROGRAM

SIZE OF HOLE	SIZE OF CASING	WEIGHT PER FOOT	SETTING DEPTH	SACKS OF CEMENT	EST. TOP
11"	8 5/8"	24#	350'	200	Surface
7 7/8"	5 1/2"	14#	3500'	365	Surface

This well will be spudded with an 11" hole and drilled to a depth of 350'. Surface casing will be run and cement circulated to the surface. Casing will be tested to 1000 psi before drilling out of the surface casing. BOP's will be pressure tested a minimum of once every 10 days. A 7 7/8" hole will be drilled to a total depth of 3500'. If the well is determined to be productive, 5 1/2" casing will be run and cemented to the surface with 365 sacks.

180 DAYS
7-14-85
UNIT IS DRILLING UNDERWAY
Posted IDP
ASST. NL
1-18-85

IN ABOVE SPACE DESCRIBE PROPOSED PROGRAM; IF PROPOSAL IS TO DEEPEN OR PLUG BACK, GIVE DATA ON PRESENT PRODUCTIVE ZONE AND PROPOSED NEW PRODUCTIVE ZONE. GIVE BLOWOUT PREVENTER PROGRAM, IF ANY.

I hereby certify that the information above is true and complete to the best of my knowledge and belief.

Signed Bill G. Spencer Bill G. Spencer, Title Sr. Regulatory Affairs Coord. Date December 20, 1984

(This space for State Use)

APPROVED BY Mike Williams Original Signed By Mike Williams DATE JAN 14 1985
Oil & Gas Inspector

CONDITIONS OF APPROVAL, IF ANY:

All distances must be from the outer boundaries of the Section.

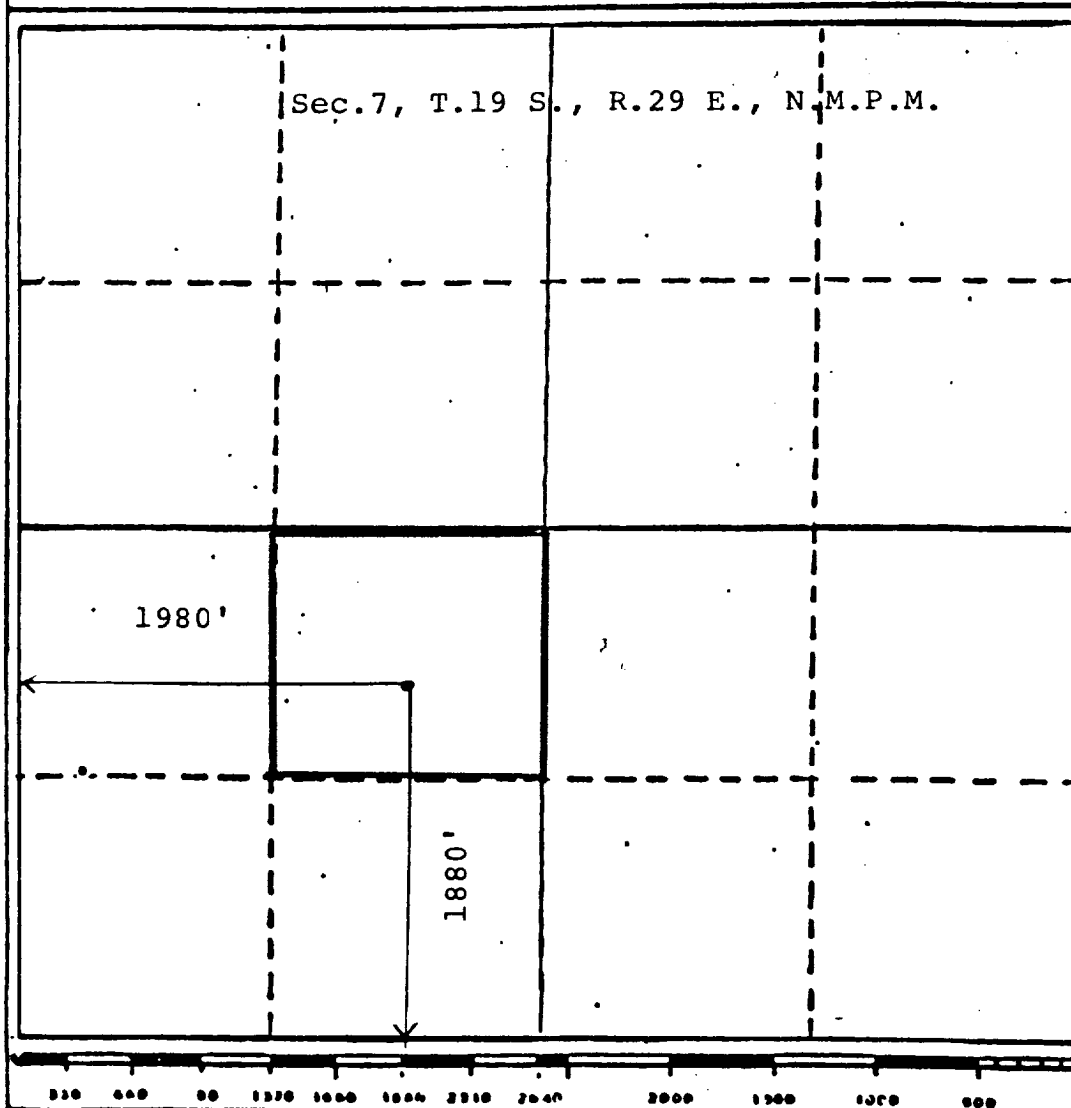
Operator Mitchell Energy			Lease Conoco Seven State			Well No. #12
Unit Letter K	Section 7	Township 19 South	Range 29 East	County Eddy		
Actual Wellbore Location of Well: 1880 feet from the South line and 1980 feet from the West line						
Ground Level Elev. 3375	Producing Formation Grayburg		Pool East Millman		Dedicated Acreage 40	

1. Outline the acreage dedicated to the subject well by colored pencil or hatchure marks on the plat below.
2. If more than one lease is dedicated to the well, outline each and identify the ownership thereof (both as to working interest and royalty).
3. If more than one lease of different ownership is dedicated to the well, have the interests of all owners been consolidated by communitization, unitization, force-pooling, etc?

☒ Yes ☐ No If answer is "yes," type of consolidation Communitization (Joint Operating Agreement)

If answer is "no," list the owners and tract descriptions which have actually been consolidated. (Use reverse side of this form if necessary.)

No allowable will be assigned to the well until all interests have been consolidated (by communitization, unitization, forced-pooling, or otherwise) or until a non-standard unit, eliminating such interests, has been approved by the Division



CERTIFICATION

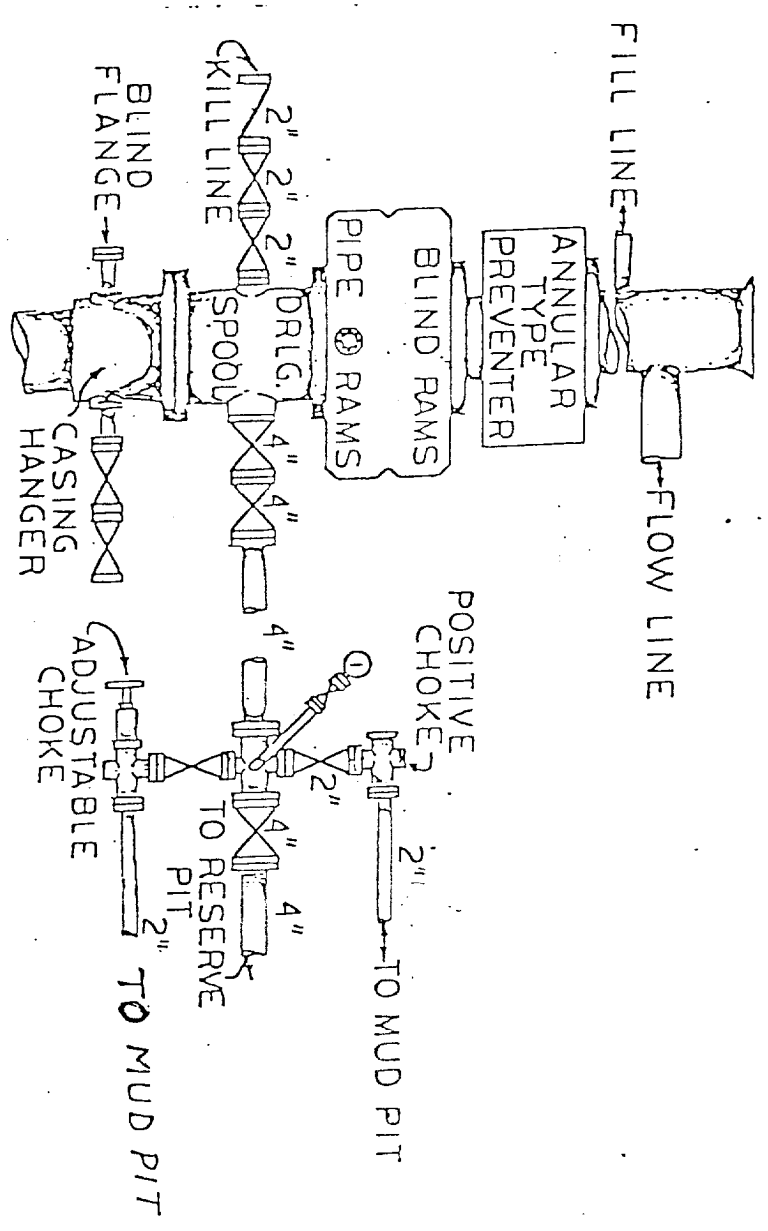
I hereby certify that the information contained herein is true and complete to the best of my knowledge and belief.

Name
Bill G Spencer
Position
Sr. Regulatory Affairs Coord.
Company
Mitchell Energy Corporation
Date
December 20, 1984

I hereby certify that the well location shown on this plat was plotted from field notes of actual surveys made by me or under my supervision, and that the same is true and correct to the best of my knowledge and belief.

Date Surveyed
December 13, 1984
Regulated Professional Engineer and/or Land Surveyor
John D. Jaques, P.E. & L.S.
Certificate No. **6290**
6290 PROFESSIONAL ENGINEER

3000 LB. W.P. B.O.P. ARRANGEMENT 1 RIG NO. 5
 10" CAMERON TYPE-SS HYDRAULIC B.O.P. 3000 P.S.I.
 12" G.K. HYDRILL 3000 W.P.
 80 GALLON- STATION KOOMEY ACCUMULATOR
 3000 LB. W.P. CHOKE MANIFOLD



Leads Wellbore Company