

UNITED STATES
DEPARTMENT OF THE INTERIOR
GEOLOGICAL SURVEY

RECEIVED
SUBMIT IN THE DATE
(Other instructions on reverse side)
JAN 24 1985

Form approved.
Budget Bureau No. 42-B1425.

30-015-25170

APPLICATION FOR PERMIT TO DRILL, DEEPEN OR PLUG BACK

1a. TYPE OF WORK

DRILL ☒

DEEPEN ☐

PLUG BACK ☐

b. TYPE OF WELL

OIL WELL ☒

GAS WELL ☐

OTHER

SINGLE ZONE ☐

MULTIPLE ZONE ☐

2. NAME OF OPERATOR

Siete Oil and Gas Corporation

3. ADDRESS OF OPERATOR

Post Office Box 2523, Roswell, NM 88201

4. LOCATION OF WELL (Report location clearly and in accordance with any State requirements.)*

At surface

330' FNL 990' FEL

At proposed prod. zone

same

14. DISTANCE IN MILES AND DIRECTION FROM NEAREST TOWN OR POST OFFICE*

14 Miles southeast of Loco Hills, New Mexico

15. DISTANCE FROM PROPOSED*

LOCATION TO NEAREST PROPERTY OR LEASE LINE, FT.
(Also to nearest drlg. unit line, if any)

330'

18. DISTANCE FROM PROPOSED LOCATION*

TO NEAREST WELL, DRILLING, COMPLETED, OR APPLIED FOR, ON THIS LEASE, FT.

1320'

21. ELEVATIONS (Show whether DF, RT, GR, etc.)

3658' GR

23. PROPOSED CASING AND CEMENTING PROGRAM

SIZE OF HOLE	SIZE OF CASING	WEIGHT PER FOOT	SETTING DEPTH	QUANTITY OF CEMENT
12 1/4"	8 5/8" 10 3/4"	24#	1450' 350'	900 sxs. Class "C" Circulated
7 7/8"	4 1/2"	10.5#	4500'	400 sxs. Class "C"

Selectively perforate and treat pay zone

Attachments:

Survey Plat (C-102)
Supplemental Drilling Data
Surface Use Plan

IN ABOVE SPACE DESCRIBE PROPOSED PROGRAM: If proposal is to deepen or plug back, give data on present productive zone and proposed new productive zone. If proposal is to drill or deepen directionally, give pertinent data on subsurface locations and measured and true vertical depths. Give blowout preventer program, if any.

24.

SIGNED

TITLE

President

DATE

January 4, 1985

(This space for Federal or State office use)

PERMIT NO.

APPROVAL DATE

APPROVED BY

TITLE

DATE

1-23-85

CONDITIONS OF APPROVAL, IF ANY:

APPROVAL SUBJECT
GENERAL REQUIREMENTS AND
SPECIAL STIPULATIONS
ATTACHED

Posted 101
API and
2-1-85

All distances must be from the outer boundaries of the Section.

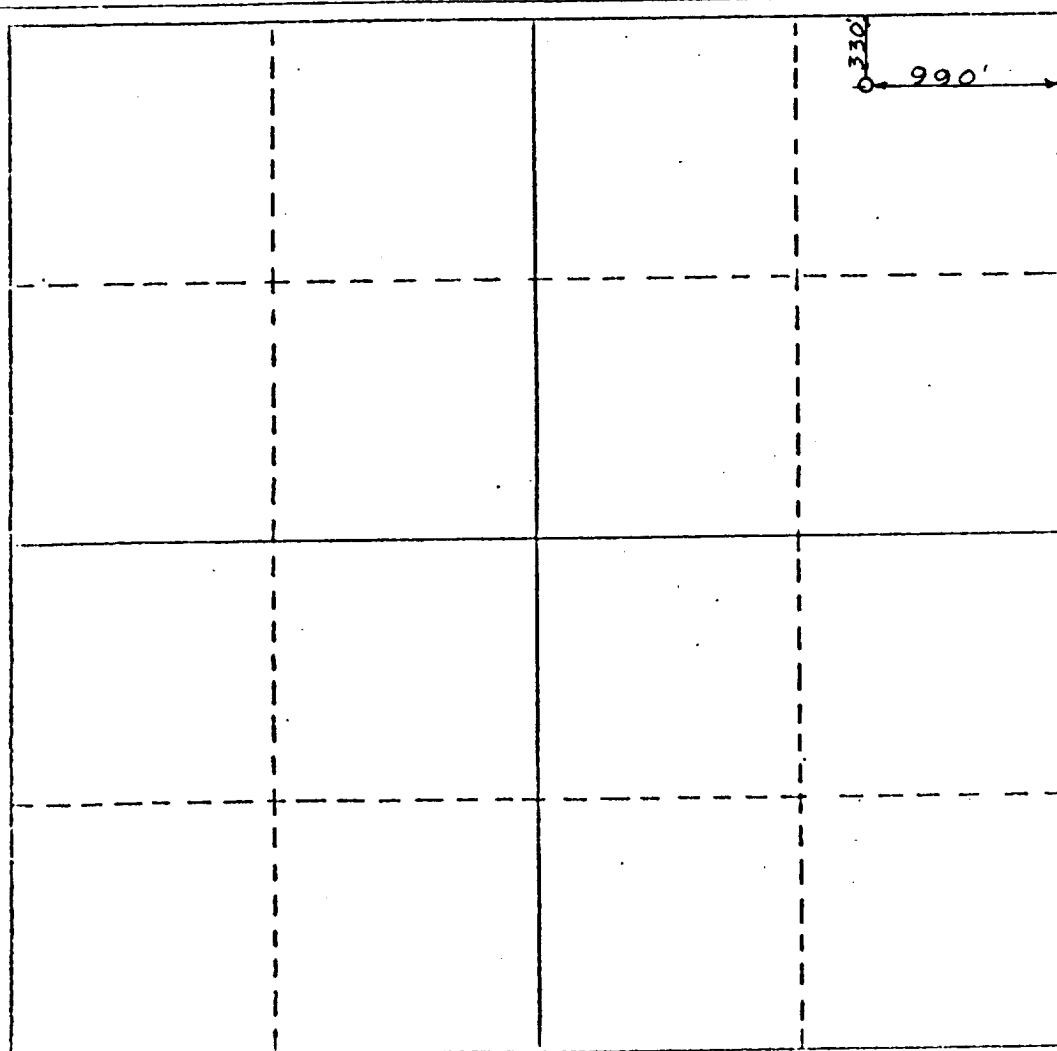
Operator Siete Oil and Gas Corp.		Lease Scottsdale Federal		Well No. 2
Unit Letter A	Section 27	Township 18 South	Range 31 East	County Eddy
Actual Postage Location of Well:				
330 feet from the North		990 feet from the East		Line
Ground Level Elev. 3658	Producing Formation	Pool	Dedicated Acreage: 40 Acres	

- Outline the acreage dedicated to the subject well by colored pencil or hachure marks on the plat below.
- If more than one lease is dedicated to the well, outline each and identify the ownership thereof (both as to working interest and royalty).
- If more than one lease of different ownership is dedicated to the well, have the interests of all owners been consolidated by communitization, unitization, force-pooling, etc?

☐ Yes ☐ No If answer is "yes," type of consolidation _____

If answer is "no," list the owners and tract descriptions which have actually been consolidated. (Use reverse side of this form if necessary.) _____

No allowable will be assigned to the well until all interests have been consolidated (by communitization, unitization, forced-pooling, or otherwise) or until a non-standard unit, eliminating such interests, has been approved by the Division.



CERTIFICATION

I hereby certify that the information contained herein is true and complete to the best of my knowledge and belief.

Name
Billy G. Underwood, Jr.

Position
President

Company
Siete Oil & Gas Corporation

Date
January 4, 1985

I hereby certify that the well location shown on this plat was plotted from field notes of actual surveys made by me or under my supervision, and that the same is true and correct to the best of my knowledge and belief.

December 31, 1984

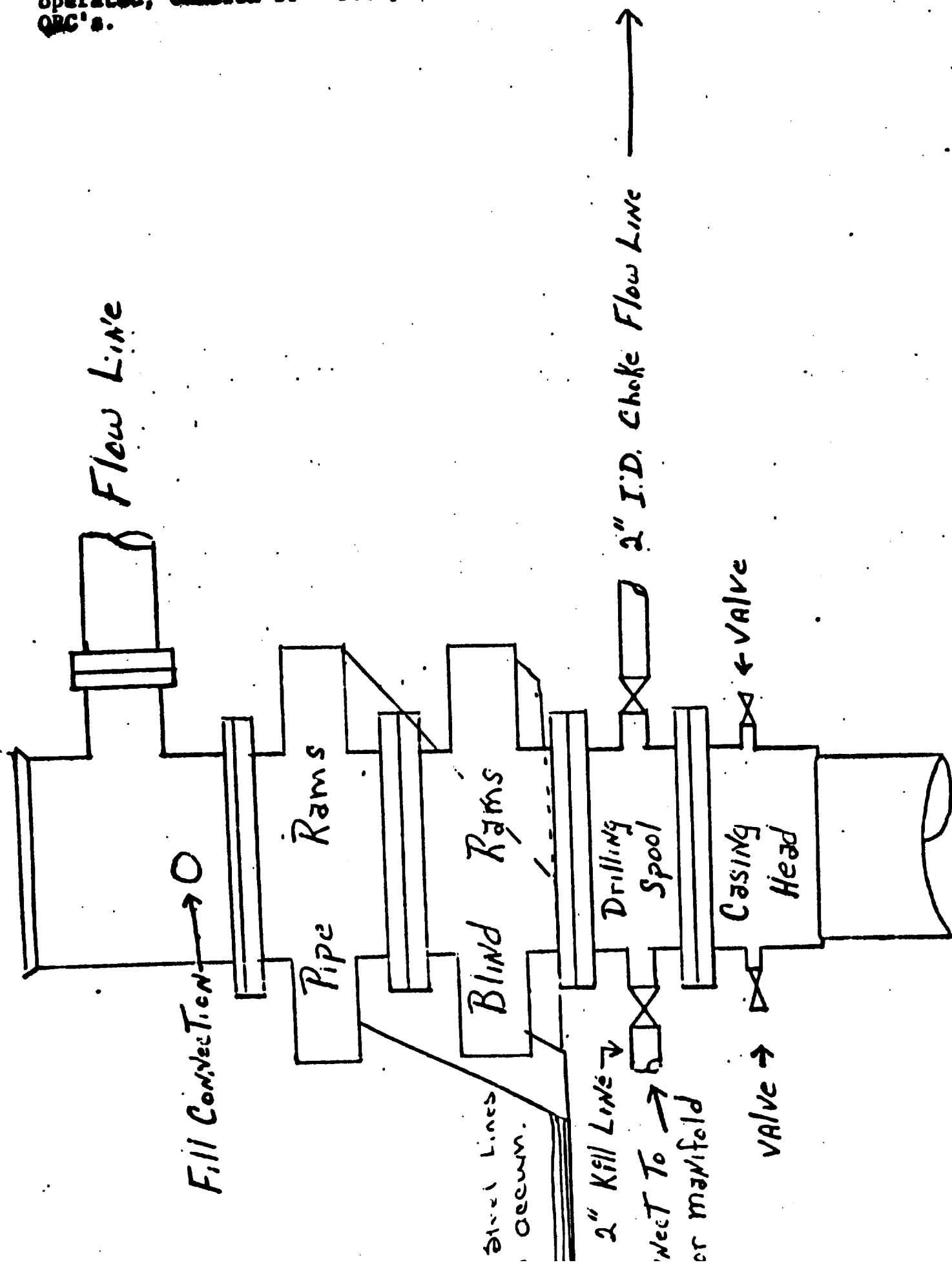
Date Surveyed
P. R. Patton

Registered Professional Engineer
and/or Land Surveyor

8112

Certificate No.

BOP Hookups for large asing.
 Pipe & Blind Rams are hydraulic
 operated, Cameron 10" 5000#
 QRC's.



SUPPLEMENTAL DRILLING DATA
SIETE OIL AND GAS CORPORATION

RE: SIETE OIL AND GAS CORPORATION
Scottsdale Federal #2
330' FNL & 990' FEL
Section 27: T-18-S, R-31-E
Eddy County, New Mexico

In conjunction with Form 9-331C, Application to Drill the subject well Siete Oil and Gas Corporation submits the following ten items of pertinent information in accordance with U.S.G.S. requirements.

1. The geologic surface is Quaternary.
2. The estimated tops of geologic markers are as follows:

Rustler	700'
Salt	825'
B. Salt	1995'
Yates	2465'
Seven Rivers	2650'
Queen	3340'
Grayburg	3790'
Premier	3960'
San Andres	3985'

3. The estimated depths at which anticipated water, oil or gas are expected to be encountered.

Water:	Approximately 200'
Oil or Gas:	Queen Approximately 3910' - 4500'

4. Proposed casing program: (See form 9-331C)

<u>Size</u>	<u>Interval</u>	<u>Weight</u>	<u>Grade</u>	<u>Joint</u>	<u>New or Used</u>
8 5/8"	0-2200'	24#	K-55	S.T.&C.	New
4 1/2"	0-4500'	10.5#	J-55	S.T.&C.	New

5. Pressure Control Equipment: The blowout preventor will be ~~an annular~~ *a two ram* type preventor: A sketch is attached.

6. Mud Program: A copy of the mud program to be used is attached.

7. Auxiliary Equipment: Master valve on blowout preventor.

8. Testing, Logging and Coring Programs:

Possible drillstem tests are planned through the Queen.
Logging: Compensated Neutron-Formation Density-Gamma Ray-Caliper
Dual Laterolog-Rxo.

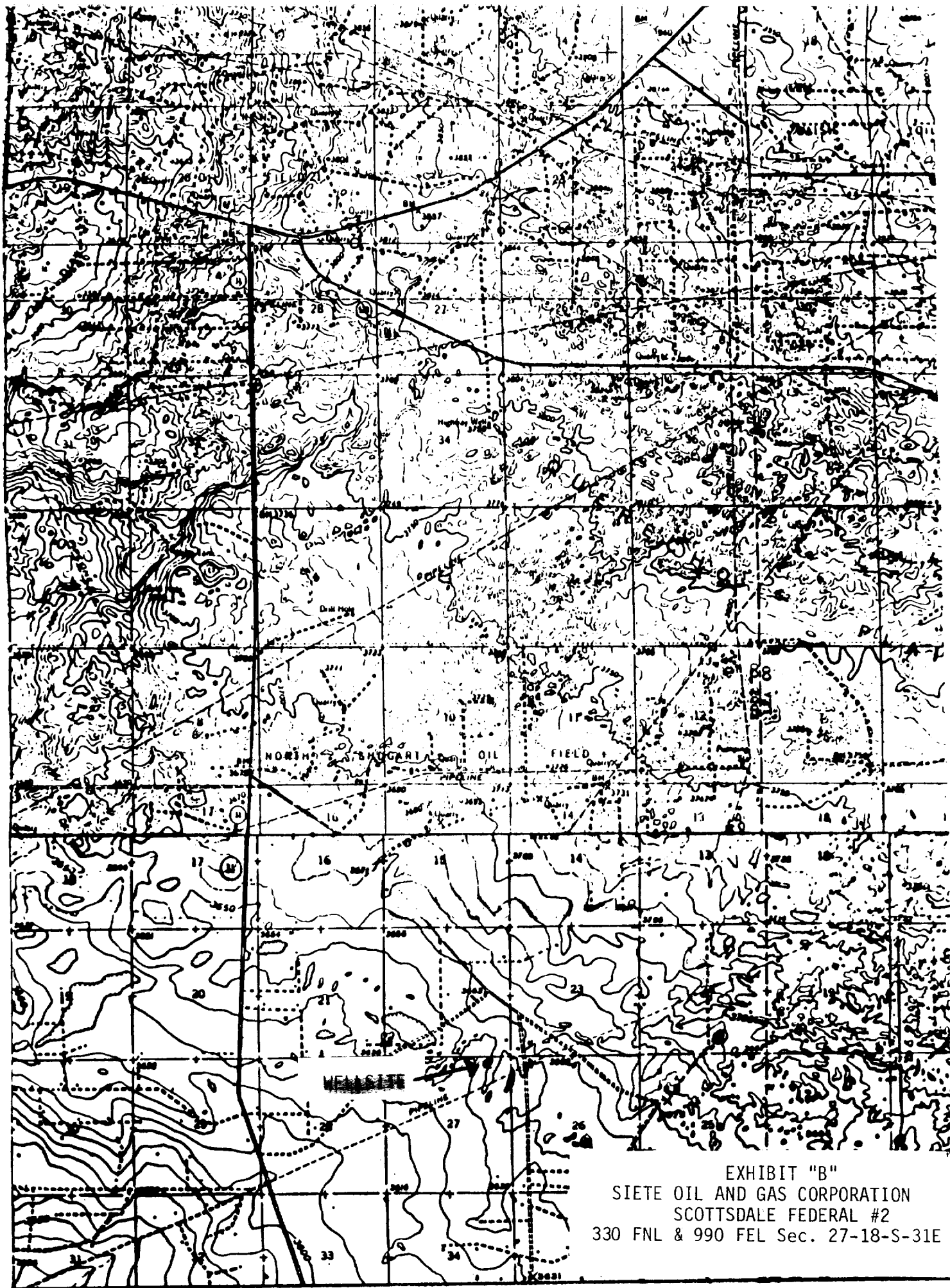


EXHIBIT "B"
SIETE OIL AND GAS CORPORATION
SCOTTSDALE FEDERAL #2
330 FNL & 990 FEL Sec. 27-18-S-31E

TOPOGRAPHIC MAP

Rig 19

Drilling Site Plat

