

C/S

30-015-25218

UNITED STATES  
DEPARTMENT OF THE INTERIOR  
GEOLOGICAL SURVEY

RECEIVED BY

MAR 13 1985

APPLICATION FOR PERMIT TO DRILL, DEEPEN, OR PLUG BACK

1a. TYPE OF WORK

ARTESIAN, OTHER DRILL ☒

DEEPEN ☐

PLUG BACK ☐

b. TYPE OF WELL

OIL WELL ☒

GAS WELL ☐

OTHER

SINGLE ZONE ☐

MULTIPLE ZONE ☐

2. NAME OF OPERATOR

Siete Oil and Gas Corporation

3. ADDRESS OF OPERATOR

Post Office Box 2523, Roswell, New Mexico 88201

4. LOCATION OF WELL (Report location clearly and in accordance with any State requirements.)\*

At surface

1830' FNL 660' FWL

At proposed prod. zone

Same

14. DISTANCE IN MILES AND DIRECTION FROM NEAREST TOWN OR POST OFFICE\*

15.10 miles Southeast of Loco Hills, New Mexico

15. DISTANCE FROM PROPOSED\*

LOCATION TO NEAREST  
PROPERTY OR LEASE LINE, FT.  
(Also to nearest drig. unit line, if any)

660'

16. NO. OF ACRES IN LEASE

320

19. PROPOSED DEPTH

5100'

17. NO. OF ACRES ASSIGNED  
TO THIS WELL

40

20. NOTARY OR CABLE TOOLS

Rotary

21. ELEVATIONS (Show whether DF, RT, GR, etc.)

3695 GR 3701' GL

22. APPROX. DATE WORK WILL START\*

March 11, 1985

23. PROPOSED CASING AND CEMENTING PROGRAM

| SIZE OF HOLE | SIZE OF CASING | WEIGHT PER FOOT | SETTING DEPTH | QUANTITY OF CEMENT            |
|--------------|----------------|-----------------|---------------|-------------------------------|
| 17 1/2"      | 13 3/8"        | 48#             | 350'          | 400 sxs. Class "C" Circulated |
| 7 7/8"       | 5 1/2"         | 15.5#           | 5100'         | 400 sxs. Class "C"            |

Selectively perforate and treat pay zone

Attachments:

Survey Plat (C-102)  
Supplemental Drilling Data  
Surface Use Plan

Posted ID1  
APL & HL  
3-22-85

IN ABOVE SPACE DESCRIBE PROPOSED PROGRAM: If proposal is to deepen or plug back, give data on present productive zone and proposed new productive zone. If proposal is to drill or deepen directionally, give pertinent data on subsurface locations and measured and true vertical depths. Give blowout preventer program, if any.

24.

SIGNED

TITLE

President

DATE January 16, 1985

(This space for Federal or State office use)

PERMIT NO.

APPROVAL DATE

APPROVED BY

TITLE

DATE

3-11-85

CONDITIONS OF APPROVAL, IF ANY:

APPROVAL SUBJECT TO  
GENERAL REQUIREMENTS AND  
SPECIAL STIPULATIONS  
ATTACHED

All distances must be from the outer boundaries of the Section.

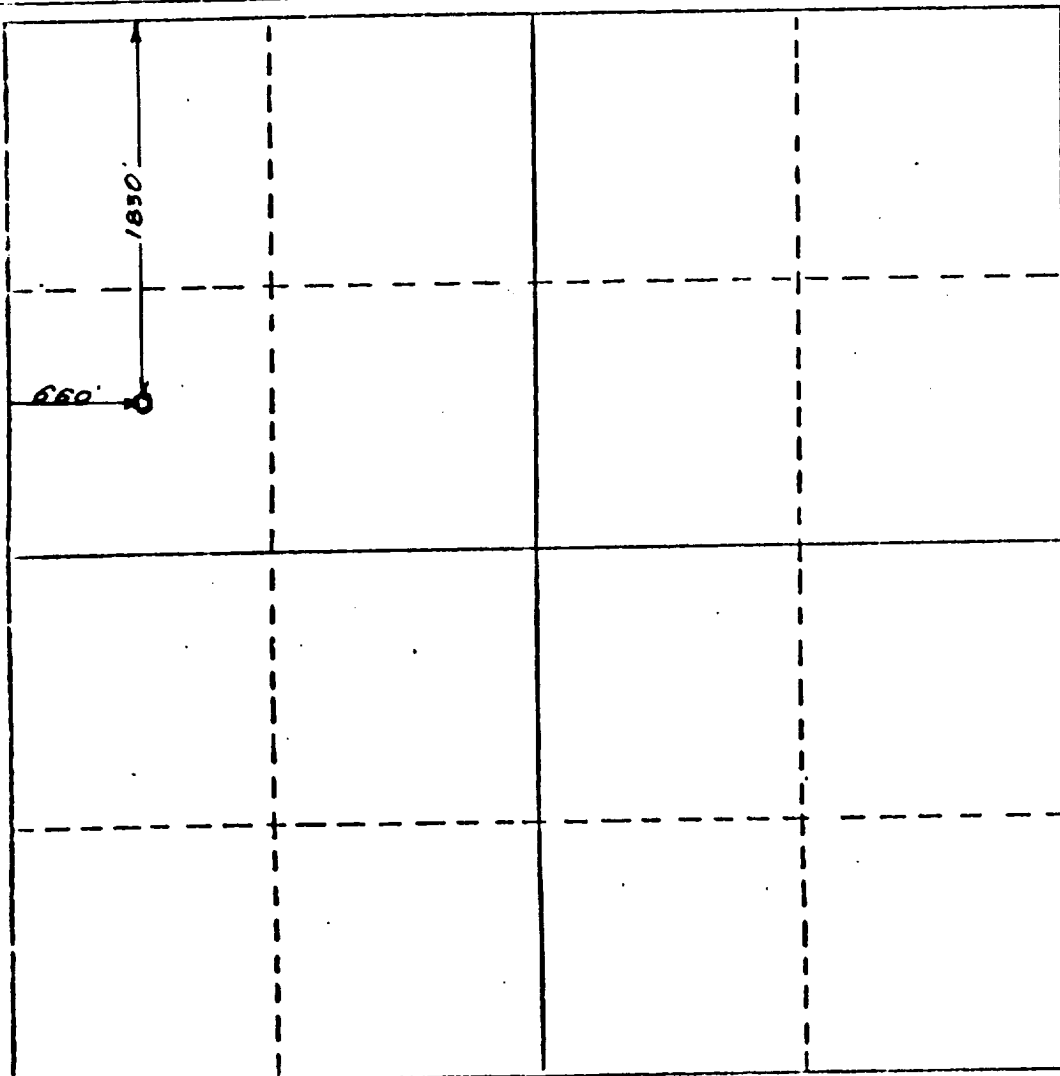
|   |                                     |                              |                                 |                       |                                       |
|---|-------------------------------------|------------------------------|---------------------------------|-----------------------|---------------------------------------|
| Operator<br><b>Siete Oil &amp; Gas Corporation</b>  |                                     | Lease<br><b>Arco Federal</b> |                                 | Well No.<br><b>1</b>  |                                       |
| Unit Letter<br><b>E</b>   | Section<br><b>24</b>                | Township<br><b>18 South</b>  | Range<br><b>31 East</b>         | County<br><b>Eddy</b> |                                       |
| Actual Footage Location of Well:<br><b>1830</b> feet from the <b>North</b> line and <b>660</b> feet from the <b>West</b> line |                                     |                              |                                 |                       |                                       |
| Ground Level Elev.<br><b>3701</b>   | Producing Formation<br><b>Queen</b> |                              | Pool<br><b>Shugart 4-SP-Q-G</b> |                       | Dedicated Acreage:<br><b>40</b> Acres |

1. Outline the acreage dedicated to the subject well by colored pencil or hachure marks on the plat below.
2. If more than one lease is dedicated to the well, outline each and identify the ownership thereof (both as to working interest and royalty).
3. If more than one lease of different ownership is dedicated to the well, have the interests of all owners been consolidated by communitization, unitization, force-pooling, etc?

☐ Yes ☐ No If answer is "yes," type of consolidation \_\_\_\_\_

If answer is "no," list the owners and tract descriptions which have actually been consolidated. (Use reverse side of this form if necessary.) \_\_\_\_\_

No allowable will be assigned to the well until all interests have been consolidated (by communitization, unitization, forced-pooling, or otherwise) or until a non-standard unit, eliminating such interests, has been approved by the Division.



## CERTIFICATION

I hereby certify that the information contained herein is true and complete to the best of my knowledge and belief.

Name

Billy G. Underwood, Jr.

Position

President

Company

Siete Oil and Gas Corporation

Date

February 26, 1985

I hereby certify that the well location shown on this plat was plotted from field notes of actual surveys made by me or under my supervision, and that the same is true and correct to the best of my knowledge and belief.

28 February 1985

Date Surveyed

P. R. Patton B. F.

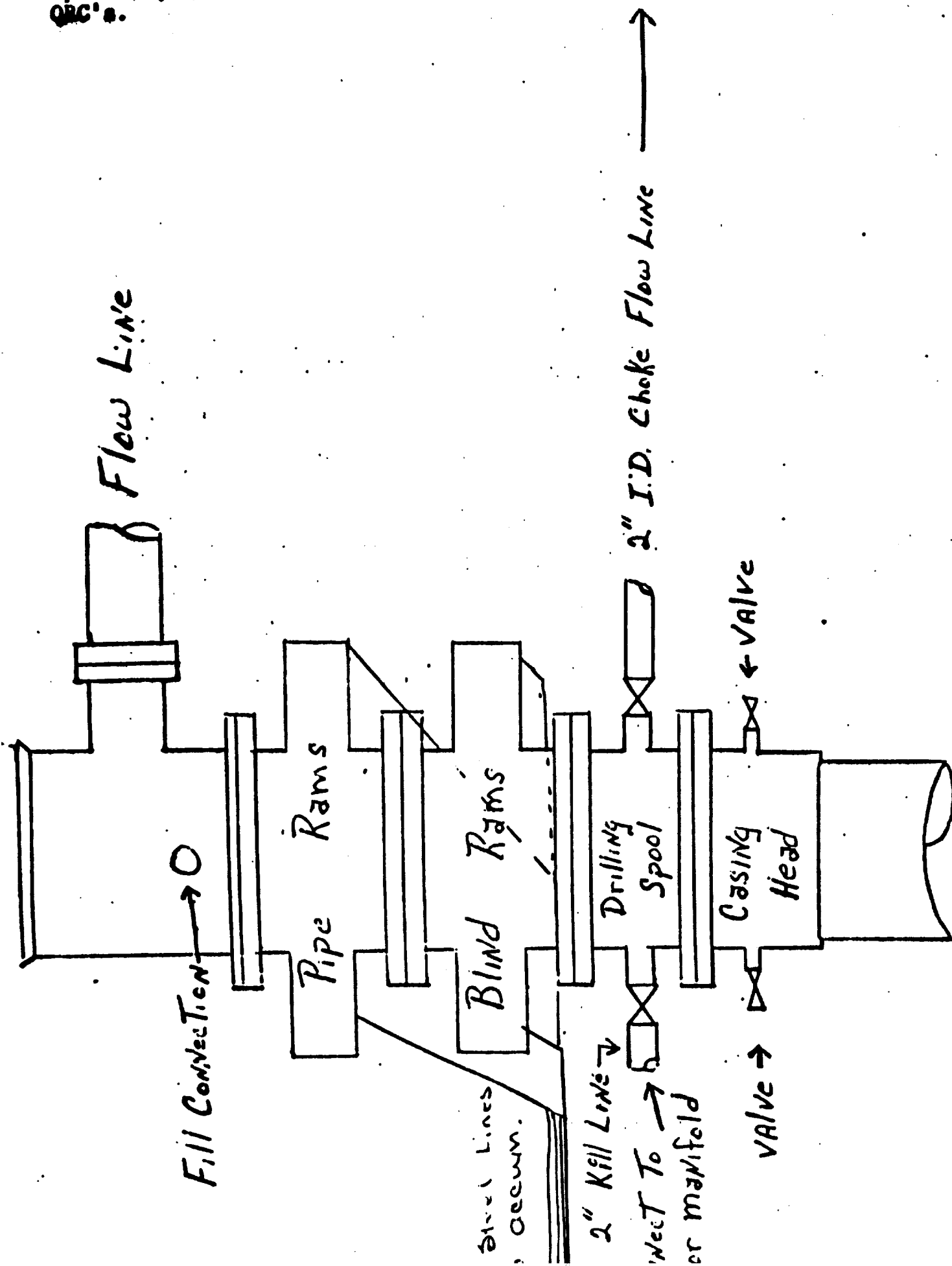
Registered Professional Engineer  
and/or Land Surveyor

8112

Certificate No.

330 660 990 1320 1650 1980 2310 2640 2970 3300 3630 3960 4290 4620 4950 5280 5610 5940 6270 6600

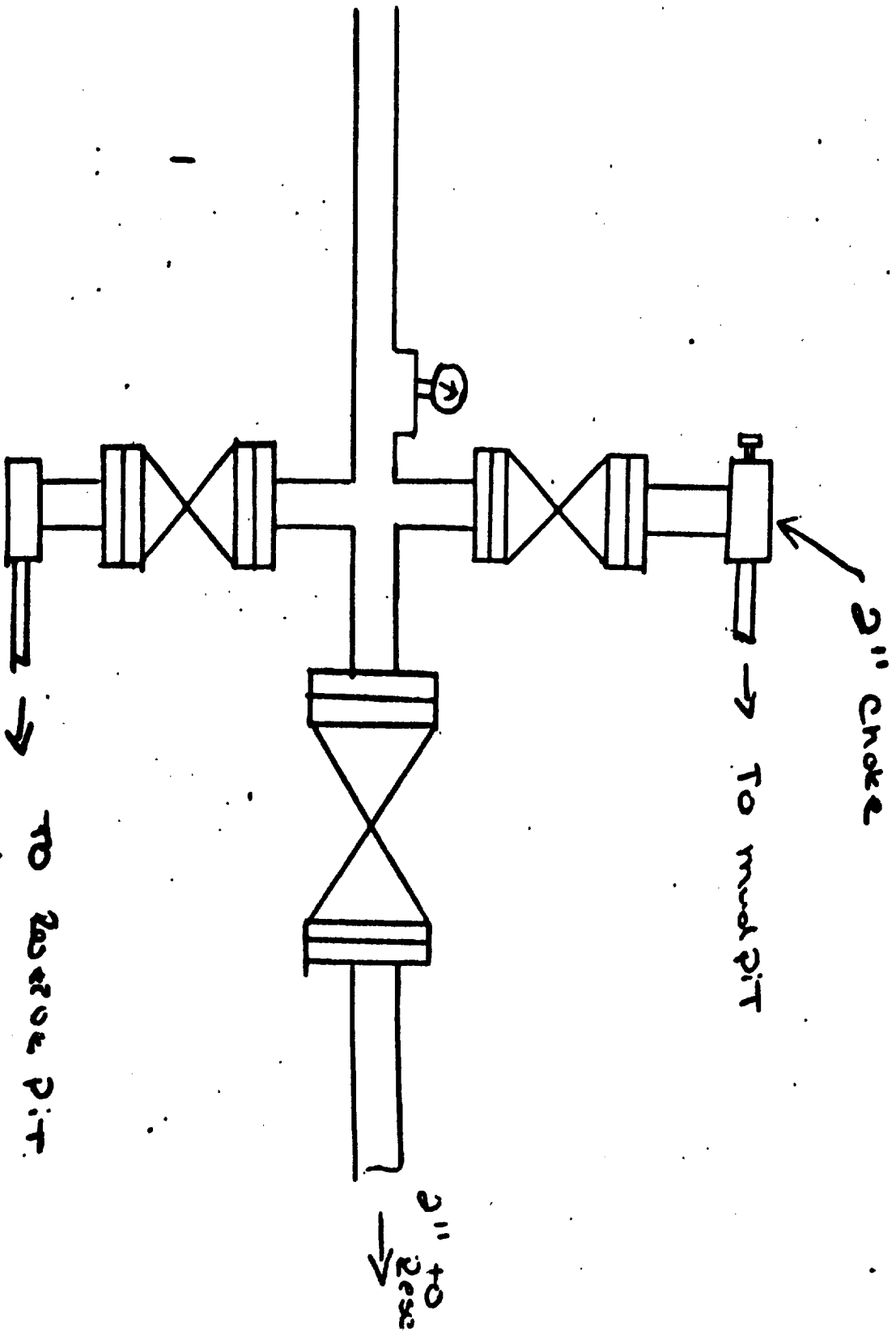
BOP Hookups for large using.  
Pipe & Blind Rams are hydraulic  
operated, Cameron 10" 5000#  
QRC's.



Accumulator

air operated,  
50 gal. reservoir

1<sup>st</sup> & 2<sup>nd</sup> lines &  
Pip Rams & Bl.  
Rams



SUPPLEMENTAL DRILLING DATA  
SIETE OIL AND GAS CORPORATION

RE: SIETE OIL AND GAS CORPORATION  
ARCO Federal #1  
1830 FNL & 660 FWL  
Section 24: T-18-S, R-31-E  
Eddy County, New Mexico

In conjunction with Form 9-331C, Application to Drill the subject well, Siete Oil and Gas Corporation submits the following ten items of pertinent information in accordance with U.S.G.S. requirements.

1. The geologic surface is Quaternary.
2. The estimated tops of geologic markers are as follows:

|                   |       |
|-------------------|-------|
| Rustler Anhydrite | 755'  |
| Salado            | 955'  |
| Base Salado       | 2080' |
| Yates             | 2360' |
| Seven Rivers      | 2445' |
| Queen             | 3415' |
| Grayburg          | 3840' |
| San Andres        | 4045' |
| Delaware Mtn.     | 4160' |

3. The anticipated depths at which anticipated water, oil or gas are expected to be encountered:

|             |   |
|-------------|---|
| Water:      | Approximately 200'                      |
| Oil or Gas: | Delaware Approximately<br>4160' - 5100' |

4. The proposed casing program: see Form (9-331C)

| <u>Size</u> | <u>Interval</u> | <u>Weight</u> | <u>Grade</u> | <u>Joint</u> | <u>New or Used</u> |
|-------------|-----------------|---------------|--------------|--------------|--------------------|
| 13 3/8"     | 0-350'          | 48#           | J-55         | S.T.&.C.     | New                |
| 5 1/2"      | 0-5100'         | 15.5#         | J-55         | S.T.&.C.     | New                |

5. Pressure Control Equipment: The blowout preventor will be a two-ram type preventor. A sketch is attached.
6. Mud Program: A copy of the mud program to be used is attached.
7. Auxiliary Equipment: Master valve on blowout preventor.
8. Testing, Logging and Coring Programs:  
No drillstem tests or coring is planned.  
Logging: Compensated Neutron-Formation Density-Gamma Ray-Caliper-Dual Laterolog-Rxo.

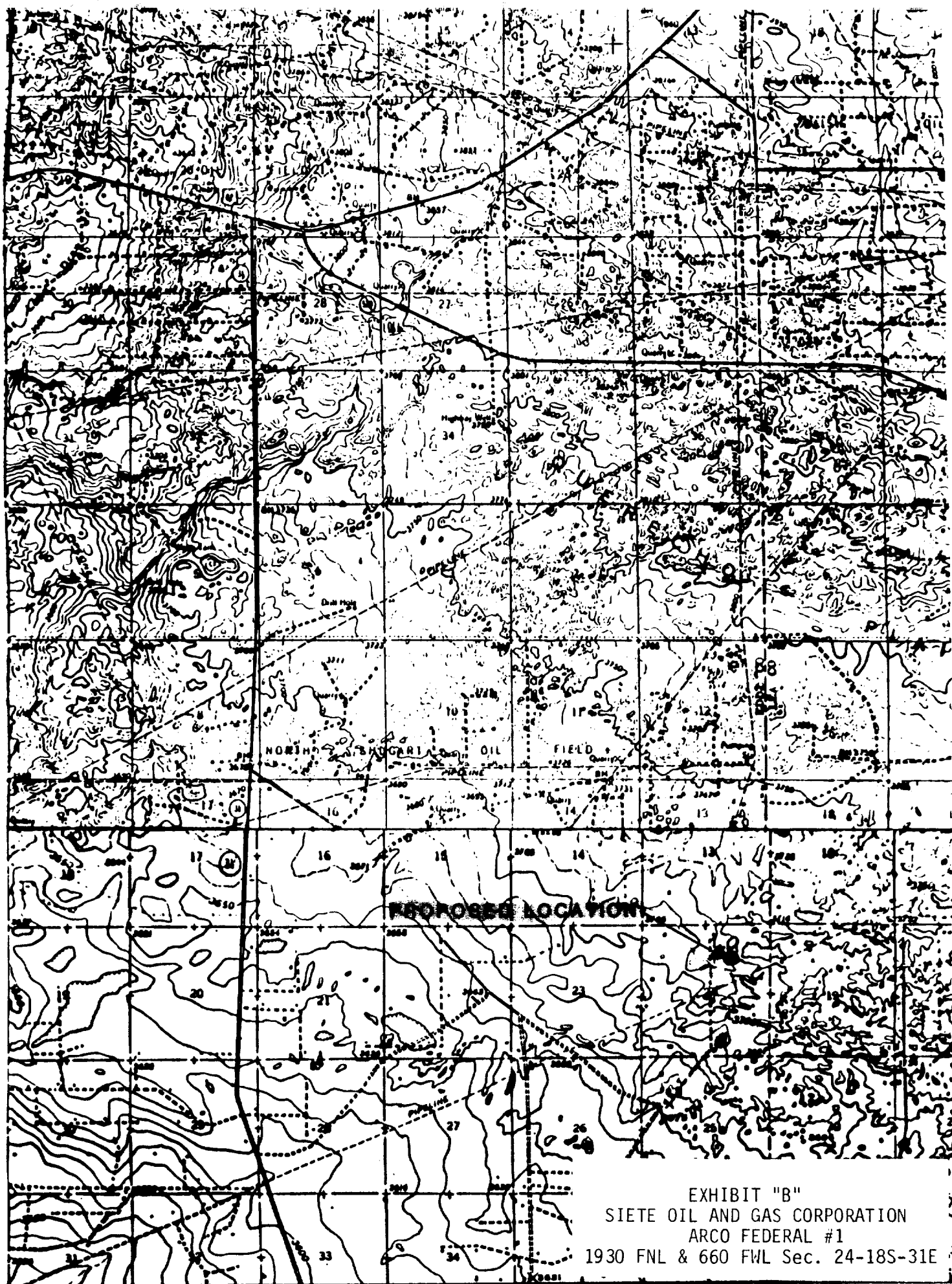


EXHIBIT "B"  
SIETE OIL AND GAS CORPORATION  
ARCO FEDERAL #1  
1930 FNL & 660 FWL Sec. 24-18S-31E

TOPOGRAPHIC MAP

# Rig 22

## Drilling Site Plat

