

UNITED STATES
DEPARTMENT OF THE INTERIOR
GEOLOGICAL SURVEYRECEIVED
(Other instructions on
reverse side)

30-015-25825

APPLICATION FOR PERMIT TO DRILL, DEEPEN, OR PLUG BACK

1a. TYPE OF WORK

DRILL ☒DEEPEN ☐PLUG BACK ☐

b. TYPE OF WELL

OIL
WELL ☒GAS
WELL ☐OTHER ☐SINGLE
ZONE ☐ARTESIAN ZONE ☐

2. NAME OF OPERATOR

Marathon Oil Company

3. ADDRESS OF OPERATOR

P.O. Box 552, Midland, Texas 79702

4. LOCATION OF WELL (Report location clearly and in accordance with any State requirements.)*

At surface

1980' FSL & 1980' FWL

At proposed prod. zone

Same as above

14. DISTANCE IN MILES AND DIRECTION FROM NEAREST TOWN OR POST OFFICE*

10 miles ESE from Loco Hills, New Mexico

15. DISTANCE FROM PROPOSED*

LOCATION TO NEAREST
PROPERTY OR LEASE LINE, FT.

(Also to nearest drlg. unit line, if any) 660' & 660'

16. NO. OF ACRES IN LEASE

960.26

18. DISTANCE FROM PROPOSED LOCATION*
TO NEAREST WELL, DRILLING, COMPLETED,
OR APPLIED FOR, ON THIS LEASE, FT.

1320'

19. PROPOSED DEPTH

9800'

17. NO. OF ACRES ASSIGNED
TO THIS WELL

40

20. ROTARY OR CABLE TOOLS

Rotary

21. ELEVATIONS (Show whether DF, RT, GR, etc.)

3736.0' GR

22. APPROX. DATE WORK WILL START*

As soon as possible

23.

PROPOSED CASING AND CEMENTING PROGRAM

SIZE OF HOLE	SIZE OF CASING	WEIGHT PER FOOT	SETTING DEPTH	QUANTITY OF CEMENT
17 1/2"	13 3/8"	48	660'	550 sxs Circulate
11"	8 5/8"	24, 32	2,700'	1200 sxs Circulate
7 7/8"	5 1/2"	15.5, 17	9,800'	1200 sxs

Propose to drill no deeper than 9800'.

All casing will be cemented in accordance with regulations and by approved methods.

Blowout preventers will be as outlined in Additional Information (See Exhibits).

IN ABOVE SPACE DESCRIBE PROPOSED PROGRAM: If proposal is to deepen or plug back, give data on present productive zone and proposed new productive zone. If proposal is to drill or deepen directionally, give pertinent data on subsurface locations and measured and true vertical depths. Give blowout preventer program, if any.

24.

SIGNED

Jerry L. Ruvie

TITLE Dist. Drlg Superintendent

DATE 10-21-87

(This space for Federal or State office use)

PERMIT NO.

APPROVAL DATE

APPROVED BY

TITLE

DATE

CONDITIONS OF APPROVAL, IF ANY:

10-30-87

*See Instructions On Reverse Side

MEXICO OIL CONSERVATION COMMISSION
WELL LOCATION AND ACREAGE DEDICATION PLAT

Form C-102
Supersedes C-128
Effective 1-1-65

All distances must be from the outer boundaries of the Section

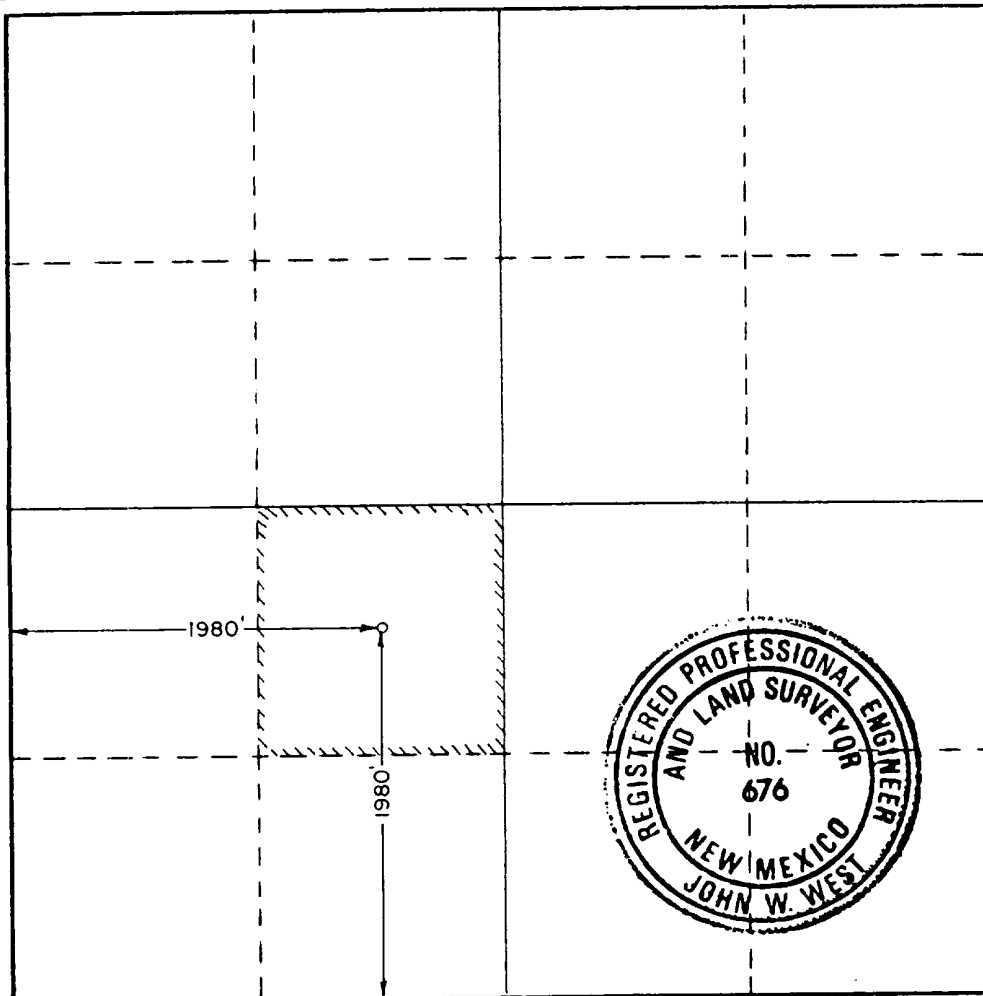
Operator MARATHON OIL COMPANY		Lease JOHNSON "B" FEDERAL		Well No. 4
Unit Letter K	Section 11	Township 18 SOUTH	Range 31 EAST	County EDDY
Actual Footage Location of Well: 1980 feet from the SOUTH line and 1980 feet from the WEST line				
Ground Level Elev. 3736.0	Producing Formation Bone Spring	Pool Undesignated TAMANO B.S.	Dedicated Acreage: 40 Acres	

1. Outline the acreage dedicated to the subject well by colored pencil or hatchure marks on the plat below.
2. If more than one lease is dedicated to the well, outline each and identify the ownership thereof (both as to working interest and royalty).
3. If more than one lease of different ownership is dedicated to the well, have the interests of all owners been consolidated by communitization, unitization, force-pooling, etc?

☐ Yes ☐ No If answer is "yes," type of consolidation _____

If answer is "no," list the owners and tract descriptions which have actually been consolidated. (Use reverse side of this form if necessary.) _____

No allowable will be assigned to the well until all interests have been consolidated (by communitization, unitization, forced-pooling, or otherwise) or until a non-standard unit, eliminating such interests, has been approved by the Commission.



CERTIFICATION

I hereby certify that the information contained herein is true and complete to the best of my knowledge and belief.

Terry L. Rivers
Name

Terry L. Rivers
Position

Dist. Drlg Superintendent
Company

Marathon Oil Company

Date
October 21, 1987

I hereby certify that the well location shown on this plat was plotted from field notes of actual surveys made by me or under my supervision, and that the same is true and correct to the best of my knowledge and belief.

Date Surveyed
OCTOBER 5, 1987

Registered Professional Engineer
and/or Land Surveyor

Ronald J. Eidson
Certificate No. JOHN W. WEST, 676

RONALD J. EIDSON, 3239

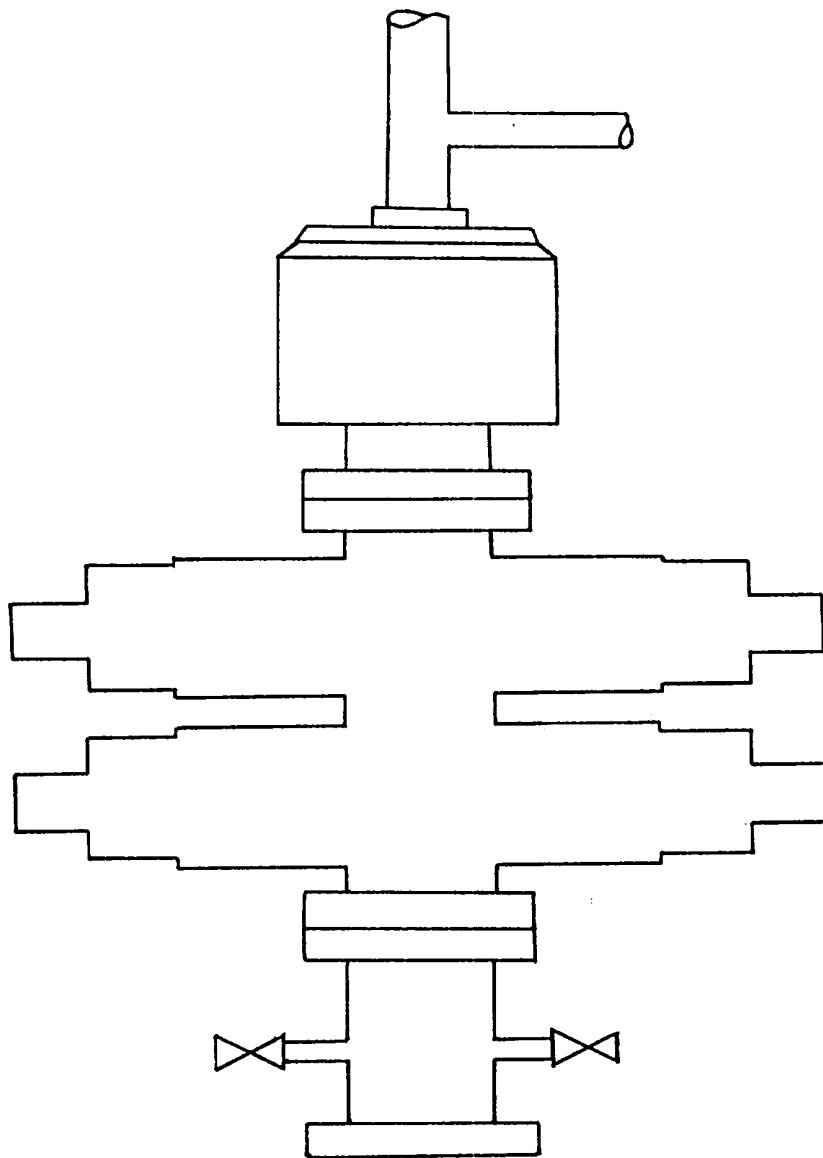


EXHIBIT "A"

BOP Stack Arrangement
13 3/8" Surface Casing

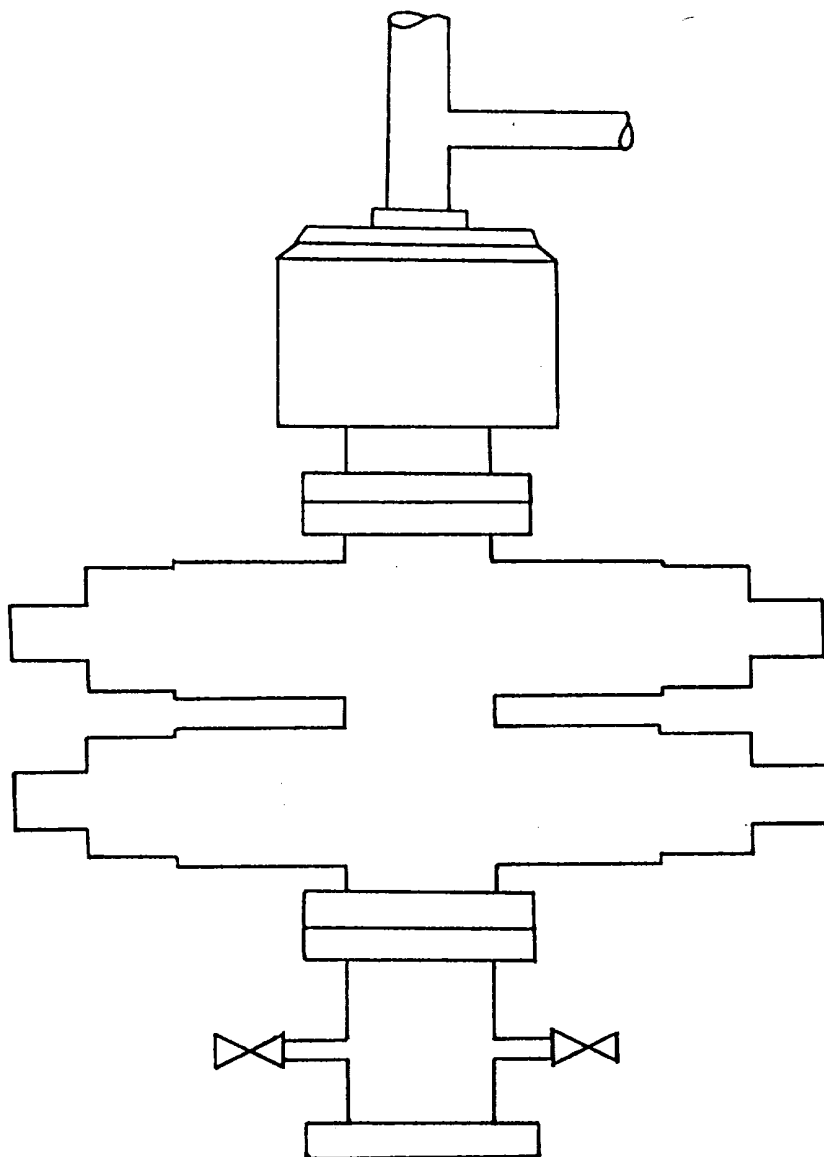


EXHIBIT "B"

BOP Stack Arrangement
8 5/8" Intermediate Casing

MARATHON OIL COMPANY

JOHNSON "B" FEDERAL WELL NO. 4
ADDITIONAL INFORMATION
Comply with Order 1

In conjunction with Form 9-331C, Application to drill subject well, Marathon Oil Company submits the following items of informations in accordance with BLM requirements:

1. Geologic Name of Surface Formation

Quaternary Alluvium

2. Estimated Tops of Important Geologic Markers

Rustler	850	Bone Spring	5480
Yates	2270	1st Sand	7613
Seven Rivers	2730	2nd Carb	7913
Queen	3340	2nd Sand	8223
Grayburg	3758	3rd Carb	8913
San Andres	4280	3rd Sand	9113
Delaware	4720	Wolfcamp	9463

3. Estimated Depths of Anticipated Water, Oil or Gas Bearing Formations

Yates (Water)	2270	Bone Spring	5480
Seven Rivers (Water)	2730	1st Sand (Water)	7613
Queen (Water & Oil)	3340	2nd Carb (Water & Oil)	7913
Grayburg (Water & Oil)	3758	2nd Sand (Water & Oil)	8223
San Andres (Water)	4280	3rd Carb (Water)	8913
Delaware (Water & Oil)	4720	3rd Sand (Water & Oil)	9113
		Wolfcamp (Water & Oil)	9463

4. Casing and Cementing Program

13 3/8" Surface to 600':	Cement to surface with 350 sxs Modified Lite and 200 sxs Class "C" with 2% CaCl ₂
8 5/8" Intermediate to 2700':	Cement to surface with 1000 sxs Modified Lite followed by 200 sxs Class "C" with 2% CaCl ₂
5 1/2" Production to 9800':	Cement to 2200' with 500 sxs Modified Lite followed by 500 sxs Class "H" 50/50 Pozmix

5. Pressure Control Equipment (Exhibits A & B)

13 3/8" Surface:	11" 3000 psi working pressure annular preventor tested to 1000 psi
	11" 3000 psi working pressure pipe and blind rams tested to 1000 psi
8 5/8" Intermediate:	11" 3000 psi working pressure annular preventor tested to 3000 psi
	11" 3000 psi working pressure pipe rams and blind rams tested to 3000 psi

6. Proposed Mud Program

0 - 600	Native; Mud Wt: 8.6 - 9.0, Viscosity 30-40 Sec
600 - 2,700	Brine Water; Mud Wt: 9.0 - 10.0, Viscosity 28-32 Sec
2,700 - 8,000	Fresh Water; Mud Wt: 8.6, Viscosity 28 Sec
8,000 - 9,800	Fresh Water Gel; Mud Wt: 8.8 - 9.2, Viscosity 30-34 Sec

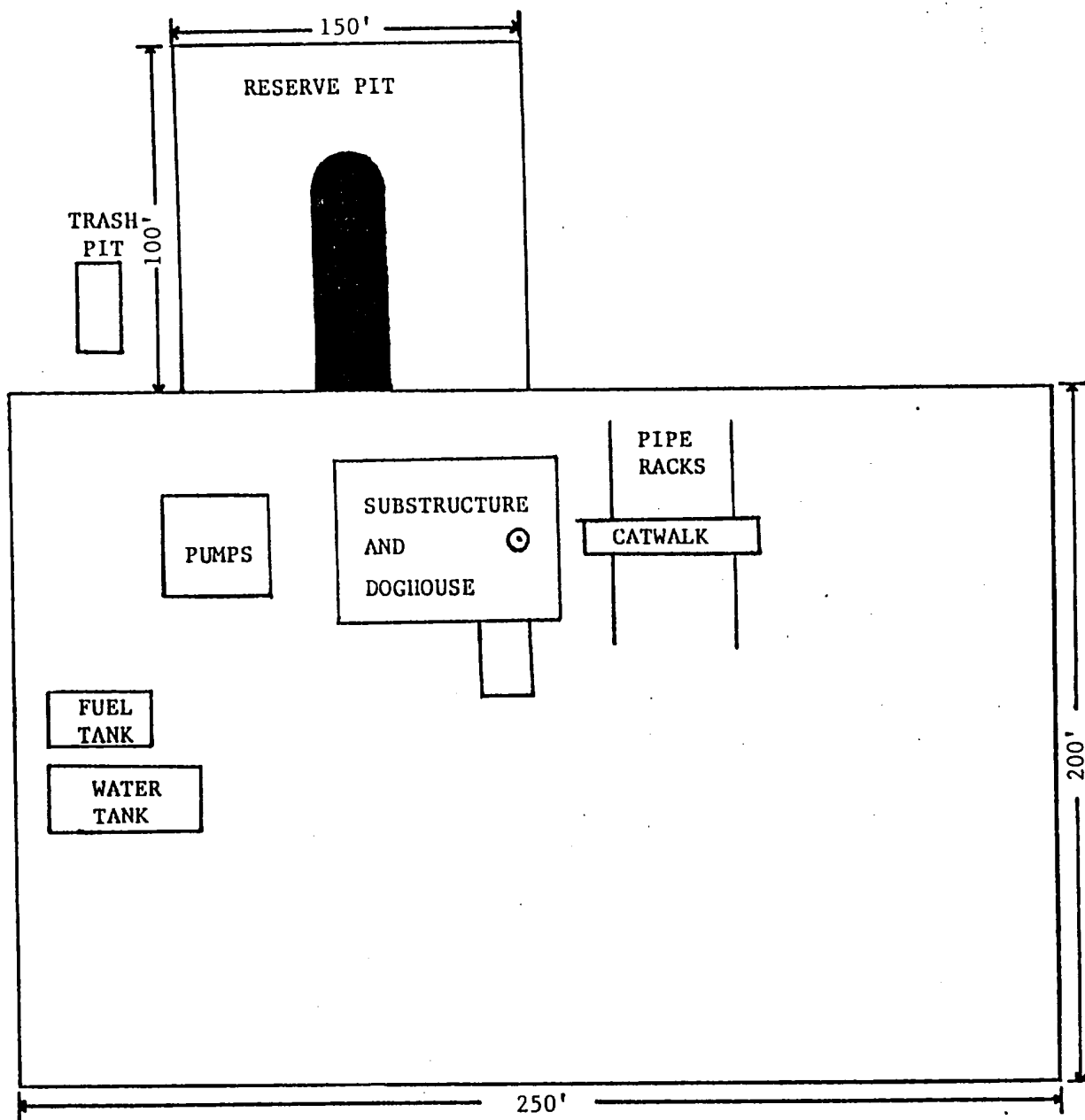


EXHIBIT "F"
Relative Location
of
Rig Components

EXHIBIT "C"

Proposed Route

Johnson "B" Federal Well No. 4

