

UNITED STATES
DEPARTMENT OF THE INTERIOR
BUREAU OF LAND MANAGEMENT

APPLICATION FOR PERMIT TO DRILL, DEEPEN, OR PLUG BACK

1a. TYPE OF WORK

DRILL ☒

DEEPEEN ☐

O. C. D.

PLUG BACK ☐

b. TYPE OF WELL

OIL
WELL ☐

GAS
WELL ☒

OTHER

2. NAME OF OPERATOR

Exxon Corporation

3. ADDRESS OF OPERATOR

Box 1600, Midland, Texas 79702

4. LOCATION OF WELL (Report location clearly and in accordance with any State requirements.)*
At surface

1497' FSL and 551' FEL of Section (NE SE)
At proposed prod. zone

14. DISTANCE IN MILES AND DIRECTION FROM NEAREST TOWN OR POST OFFICE*

18 miles S/SW of Hope

15. DISTANCE FROM PROPOSED*

LOCATION TO NEAREST
PROPERTY OR LEASE LINE, FT.
(Also to nearest drlg. unit line, if any)

1650'

551'

16. NO. OF ACRES IN LEASE

1920

17. NO. OF ACRES ASSIGNED
TO THIS WELL

320

18. DISTANCE FROM PROPOSED LOCATION*
TO NEAREST WELL, DRILLING, COMPLETED,
OR APPLIED FOR, ON THIS LEASE, FT.

None

19. PROPOSED DEPTH

8700'

20. ROTARY OR CABLE TOOLS

Rotary

21. ELEVATIONS (Show whether DF, RT, GR, etc.)

4480' GR

22. APPROX. DATE WORK WILL START*

4-15-85

PROPOSED CASING AND CEMENTING PROGRAM

SIZE OF HOLE	SIZE OF CASING	WEIGHT PER FOOT	SETTING DEPTH	QUANTITY OF CEMENT
17 1/2"	13 3/8"	54 1/2#	350'	250 cu.ft. CIRCULATE
12 1/4"	8 5/8"	24#	1650'	700 cu.ft. CIRCULATE
7 7/8"	5 1/2"	15.5, 14 & 17#	TD	1250 cu.ft.

IN ABOVE SPACE DESCRIBE PROPOSED PROGRAM: If proposal is to deepen or plug back, give data on present productive zone and proposed new productive zone. If proposal is to drill or deepen directionally, give pertinent data on subsurface locations and measured and true vertical depths. Give blowout preventer program, if any.

24.

SIGNED

Melba Knippling

TITLE Unit Head

DATE 3-7-85

(This space for Federal or State office use)

PERMIT NO.

APPROVAL DATE

APPROVED BY

TITLE

DATE

3-18-85

Subject to
Like Approval
by State

Unorthodox
location

*See Instructions On Reverse Side

APPROVAL SUBJECT TO
GENERAL REQUIREMENTS
SPECIAL STIPULATIONS
ATTACHED

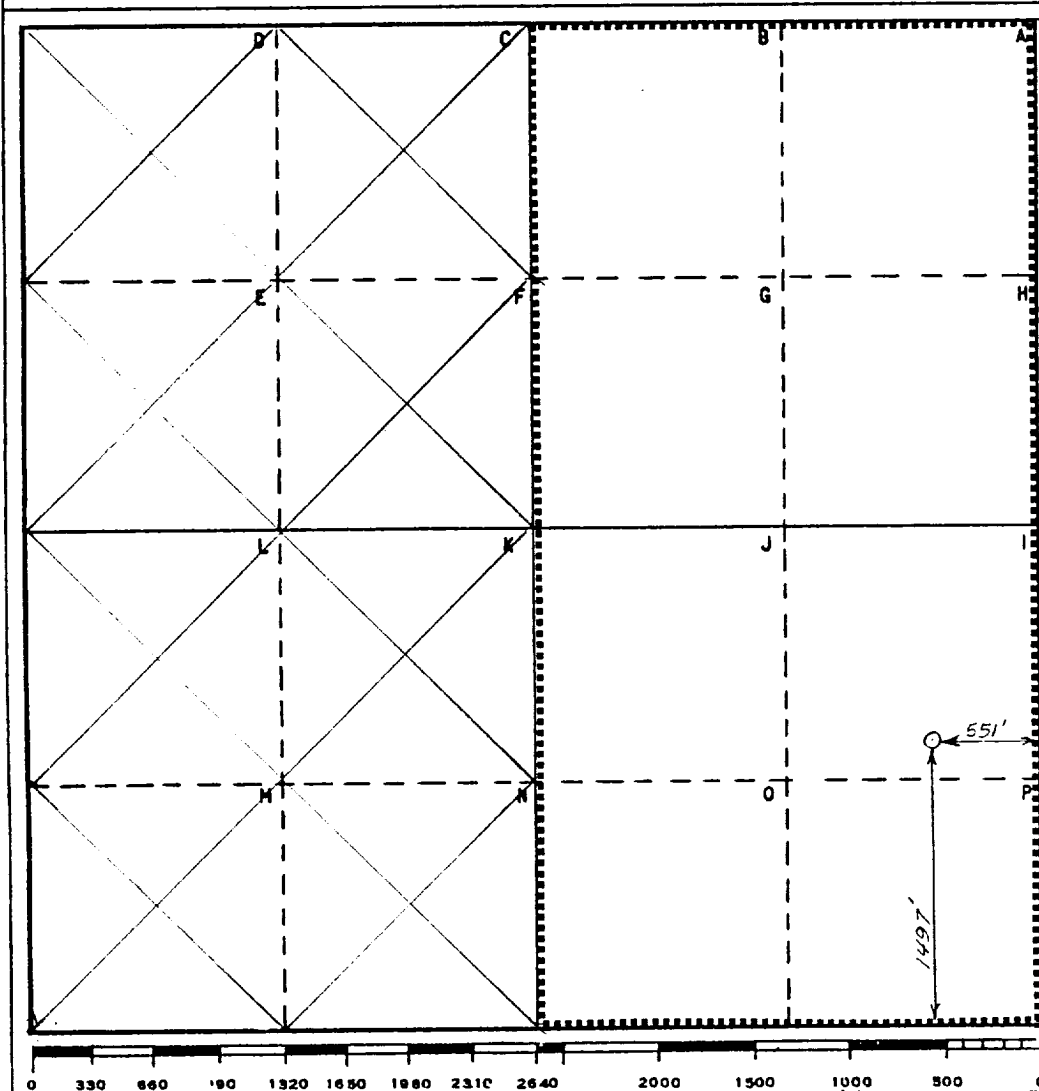
Operator Exxon Corporation			Lease LEGGETT FEDERAL		Well No. 1
Unit Letter I	Section 22	Township 20 S	Range 21 E	County EDDY	
Actual Footage Location of Well: 551 feet from the EAST line and 1497 feet from the SOUTH line					
Ground Level Elev. 4480'	Producing Formation MORROW		Pool LITTLE BOX CANYON UNDESIG		Dedicated Acreage: 320 Acres

1. Outline the acreage dedicated to the subject well by colored pencil or hachure marks on the plat below.
2. If more than one lease is dedicated to the well, outline each and identify the ownership thereof (both as to working interest and royalty).
3. If more than one lease of different ownership is dedicated to the well, have the interests of all owners been consolidated by communitization, unitization, force-pooling, etc?

☐ Yes ☐ No If answer is "yes," type of consolidation _____

If answer is "no," list the owners and tract descriptions which have actually been consolidated. (Use reverse side of this form if necessary.) _____

No allowable will be assigned to the well until all interests have been consolidated (by communitization, unitization, forced-pooling, or otherwise) or until a non-standard unit, eliminating such interests, has been approved by the Commission.



CERTIFICATION

I hereby certify that the information contained herein is true and complete to the best of my knowledge and belief.

Name
Melba Knippling
Position
UNIT HEAD
Company
Exxon Corporation
Box 1600 Midland, Texas
Date
2-25-85

I hereby certify that the well location shown on this plat was plotted from field notes of actual surveys made by me or under my supervision, and that the same is true and correct to the best of my knowledge and belief.

Date Surveyed
2-11-85
Registered Professional Engineer
and/or Land Surveyor

Bruce R. Pennell
Certificate No.
#9062

C.E. Sec. File No. WA-8782

18 Miles S/SW of HOPE, New Mexico

COMPONENT SPECIFICATIONS

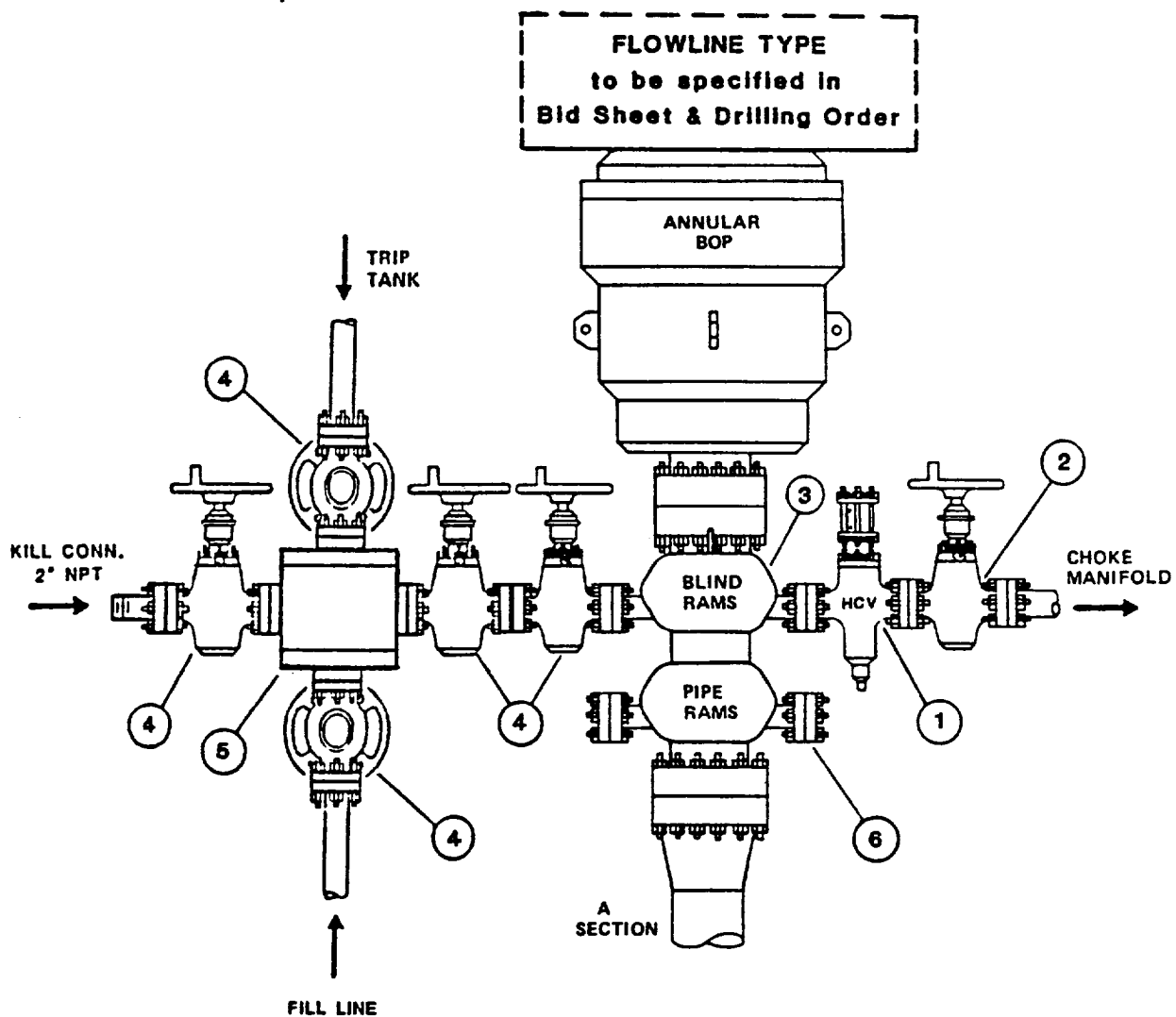
Type RR BOP Stack

1. Flanged hydraulically controlled gate valve -- 3" minimum nominal diameter -- same working pressure as BOP stack.
2. Flanged plug or gate valve -- 3" minimum nominal diameter -- same working pressure as BOP stack.
3. BOP outlets must be 2" minimum nominal diameter for kill line and 3" minimum diameter for choke line.
4. Flanged plug or gate valve -- 2" minimum nominal diameter -- same working pressure as BOP stack.
5. Flanged Tee.
6. Any BOP side outlet flange, located below the bottom ram, must be equipped with a blind flange.

NOTE: Each BOP stack must have separate side outlet connections for kill and choke lines, unless specific approval for a single side-outlet is obtained from the Exxon Division Drilling Manager prior to rig-up. Such approval will not be granted unless the equipment arrangement conforms to the specifications shown on pages 14 and 15 of this Section.

TYPE RRA BOP STACK

THREE PREVENTERS



COMPONENT SPECIFICATIONS

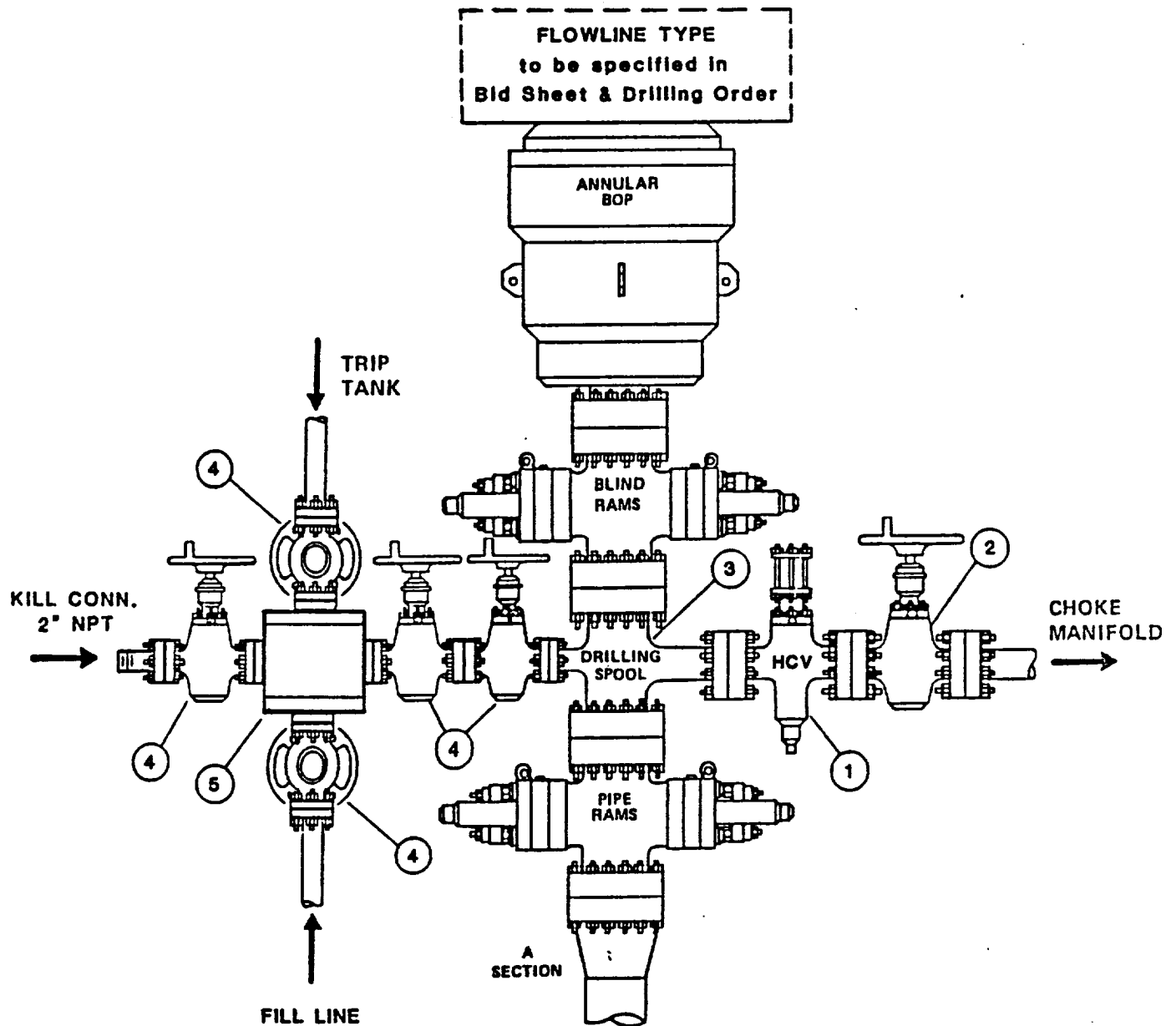
Type RRA BOP Stack

1. Flanged hydraulically controlled gate valve -- 3" minimum nominal diameter -- same working pressure as BOP stack.
2. Flanged plug gate valve -- 3" minimum nominal diameter -- same working pressure as BOP stack.
3. BOP outlets must be 2" minimum nominal diameter for kill line and 3" minimum diameter for choke line.
4. Flanged plug or gate valve -- 2" minimum nominal diameter -- same working pressure as BOP stack.
5. Flanged cross or two (2) flanged tees.
6. Any BOP side outlet flange, located below the bottom ram, must be equipped with a blind flange.

NOTE: Each BOP stack must have separate side outlet connections for kill and choke lines, unless specific approval for a single side-outlet is obtained from the Exxon Division Drilling Manager prior to rig-up. Such approval will not be granted unless the equipment arrangement conforms to the specifications shown on pages 14 and 15 of this Section.

TYPE RSRA BOP STACK

THREE PREVENTERS



DRILLING PLAN
Leggett Federal #1
Section 22, T-20-S, R-21-E
Eddy County, New Mexico

1. Estimated tops of important geological markers:

Abo	:	3,460'
Wolfcamp:		4,800'
Morrow	:	7,750'
Chester	:	8,050'

2. Estimated depths at which the top of anticipated water, oil, gas or other mineral-bearing formations are expected to be encountered and the plan for protecting such resources.

	<u>Depth</u>	<u>Protection</u>
Deepest FW:	1,100'	Casing and Cement
Gas-Morrow:	7,750'	Casing and Cement

3. Minimum specifications for pressure control equipment:

- A. Wellhead Equipment: Flange type, 3000 psi x 5000 psi WP for 13-3/8" x 8-5/8" x 5-1/2" casing program with 2-7/8" tubing hanger.
- B. Blowout Preventers: Refer to attached drawings and lists of equipment titled "Type RRA" for description of BOP stacks and choke manifold.
- C. BOP Control Unit : Unit will be hydraulically operated and have two control systems.
- D. Testing : Upon installation, the Type RRA BOPs for the 13-3/8" surface casing will be tested to a low pressure (200-300 psi) and to a high pressure of 2000 psi. Casing rams will be tested in a like manner. An operational test of the blowout preventers will be performed on each round trip (but not more than once each day); the annular and pipe ram preventers will be closed on drill pipe and the blind rams will be closed while pipe is out of the hole.

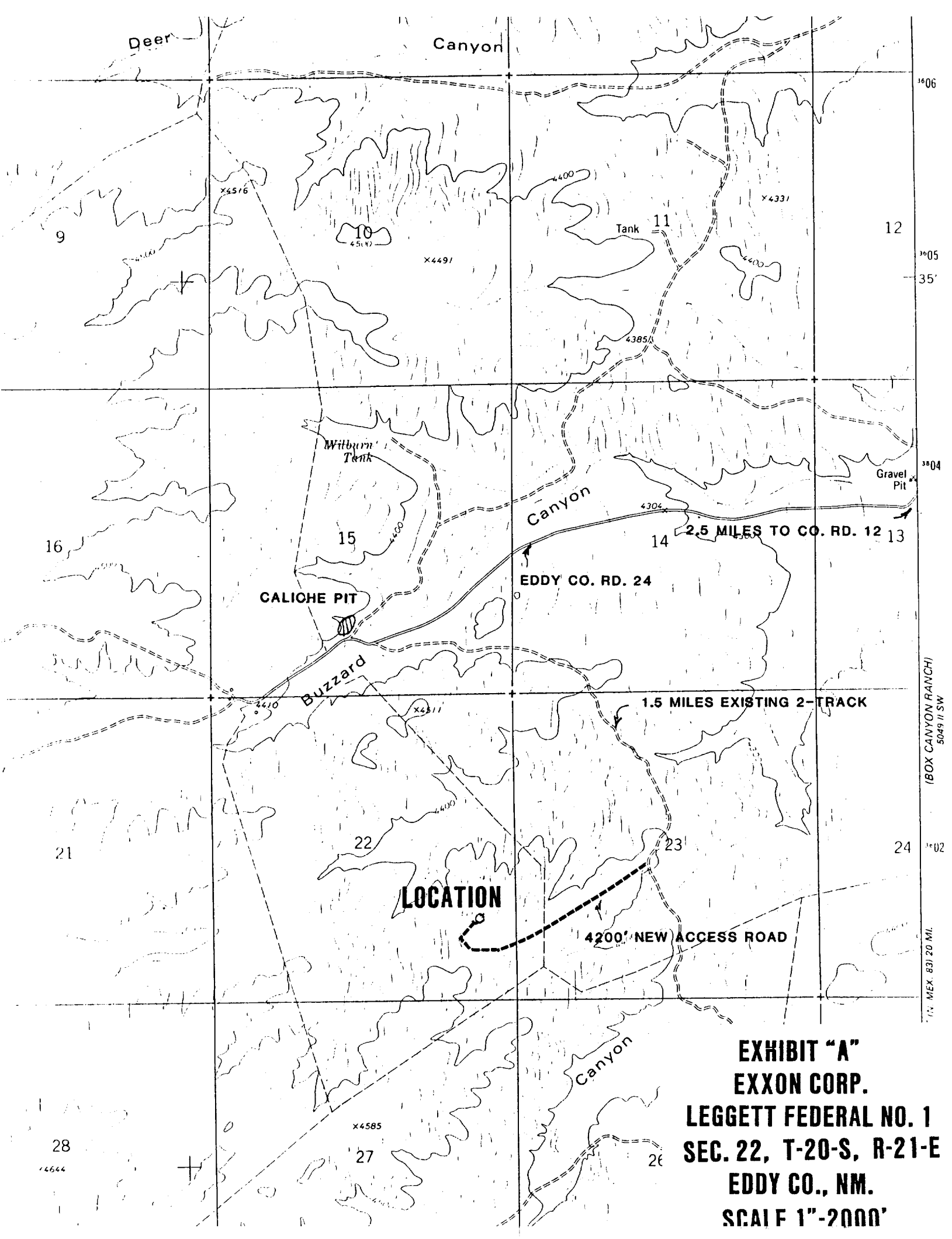


EXHIBIT "A"
EXXON CORP.
LEGGETT FEDERAL NO. 1
SEC. 22, T-20-S, R-21-E
EDDY CO., NM.
SCALE 1"-2000'