

RECEIVED BY

(Form 3160-3)

MAY 07 1985

UNITED STATES  
DEPARTMENT OF THE INTERIOR  
BUREAU OF LAND MANAGEMENT

## APPLICATION FOR PERMIT TO DRILL, DEEPEN, OR PLUG BACK

1a. TYPE OF WORK

ARTESIA, OFFICE

DRILL ☒DEEPEN ☐PLUG BACK ☐

b. TYPE OF WELL

OIL  
WELL ☐GAS  
WELL ☒

OTHER

SINGLE  
ZONE ☐MULTIPLE  
ZONE ☐

2. NAME OF OPERATOR

Exxon Corporation

3. ADDRESS OF OPERATOR

Box 1600, Midland, Texas 79702

4. LOCATION OF WELL (Report location clearly and in accordance with any State requirements.)\*

At surface

1980' FNL and 1980' FWL of Section (SE NW)

At proposed prod. zone

14. DISTANCE IN MILES AND DIRECTION FROM NEAREST TOWN OR POST OFFICE\*

10.5 miles SE of Hope

15. DISTANCE FROM PROPOSED\*

LOCATION TO NEAREST  
PROPERTY OR LEASE LINE, FT.  
(Also to nearest drlg. unit line, if any)

660'

16. NO. OF ACRES IN LEASE

320

17. NO. OF ACRES ASSIGNED  
TO THIS WELL

320

18. DISTANCE FROM PROPOSED LOCATION\*

TO NEAREST WELL, DRILLING, COMPLETED,  
OR APPLIED FOR, ON THIS LEASE, FT.

None

19. PROPOSED DEPTH

8800'

20. ROTARY OR CABLE TOOLS

Rotary

21. ELEVATIONS (Show whether DF, RT, GR, etc.)

3866' GR

22. APPROX. DATE WORK WILL START\*

4-30-85

## PROPOSED CASING AND CEMENTING PROGRAM

SIZE OF HOLE	SIZE OF CASING	WEIGHT PER FOOT	SETTING DEPTH	QUANTITY OF CEMENT
17 1/2	13 3/8	54.5	300	160 SX
12 1/4	8 5/8	24.0	1700	500 SX
7 7/8	5 1/2	14, 15.5, 17	8800	620 SX

CIRCULATE  
CIRCULATE

IN ABOVE SPACE DESCRIBE PROPOSED PROGRAM: If proposal is to deepen or plug back, give data on present productive zone and proposed new productive zone. If proposal is to drill or deepen directionally, give pertinent data on subsurface locations and measured and true vertical depths. Give blowout preventer program, if any.

24.

SIGNED

Edgar Kunkel

TITLE

Unit Head

DATE

3-21-85

(This space for Federal or State office use)

PERMIT NO.

APPROVAL DATE

Orig: Sgd. Charles S. D. H. H.

APPROVED BY

TITLE

DATE

5-6-85

CONDITIONS OF APPROVAL, IF ANY:

APPROVAL SUBJECT TO  
GENERAL REQUIREMENTS AND  
SPECIAL STIPULATIONS  
ATTACHED

\*See Instructions On Reverse Side

Federal Lse. No. \_\_\_\_\_ All distances must be from the outer boundaries of the Section.

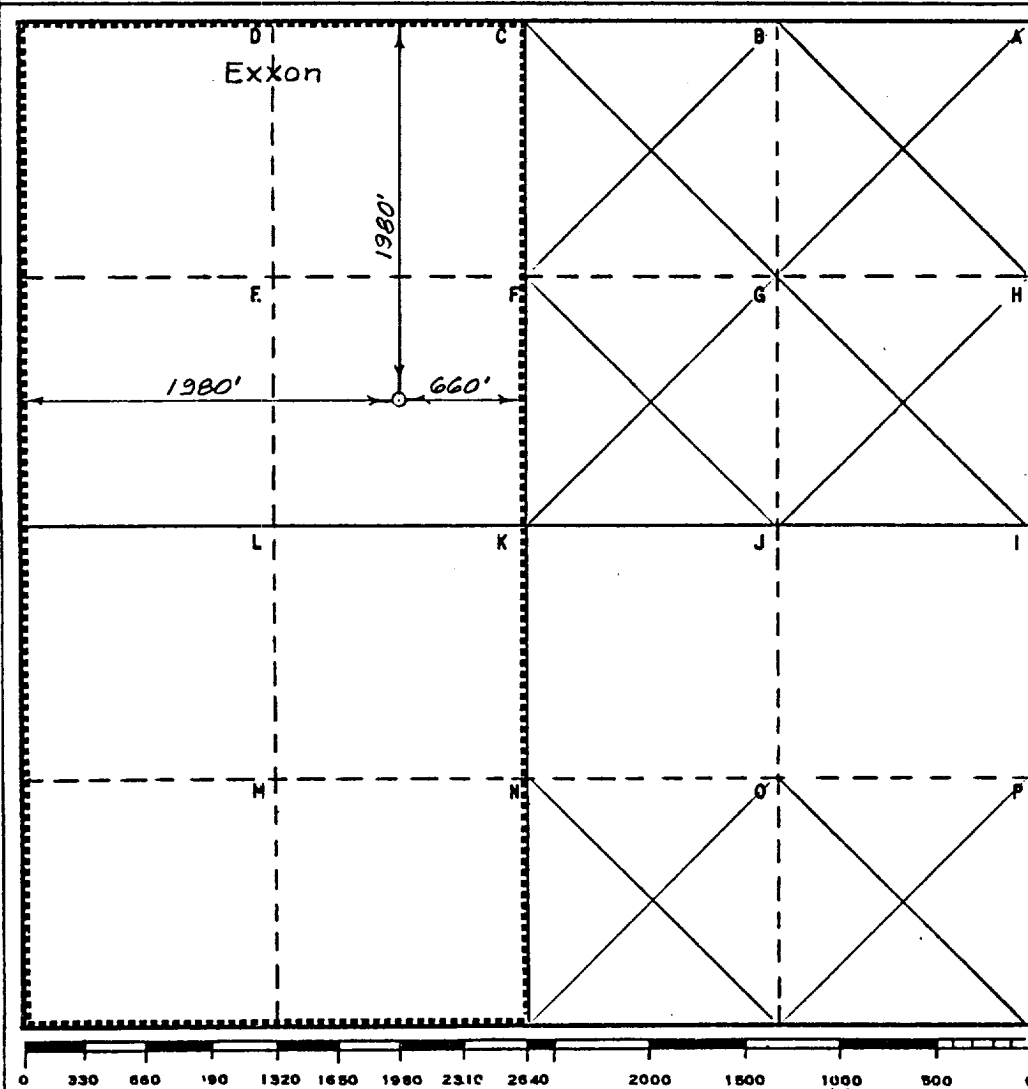
Operator Exxon Corporation		Lease ALTWEIN FEDERAL COM.		Well No. 1
Unit Letter F	Section 12	Township 19 S	Range 23 E	County EDDY
Actual Footage Location of Well: 1980 feet from the NORTH line and 1980 feet from the WEST line				
Ground Level Elev. 3866	Producing Formation MORROW	Pool UNDESIG. ANTELOPE SINK	Dedicated Acreage: 320 Acres	

1. Outline the acreage dedicated to the subject well by colored pencil or hachure marks on the plat below.
2. If more than one lease is dedicated to the well, outline each and identify the ownership thereof (both as to working interest and royalty).
3. If more than one lease of different ownership is dedicated to the well, have the interests of all owners been consolidated by communitization, unitization, force-pooling, etc?

☐ Yes ☐ No If answer is "yes," type of consolidation \_\_\_\_\_

If answer is "no," list the owners and tract descriptions which have actually been consolidated. (Use reverse side of this form if necessary.) \_\_\_\_\_

No allowable will be assigned to the well until all interests have been consolidated (by communitization, unitization, forced-pooling, or otherwise) or until a non-standard unit, eliminating such interests, has been approved by the Commission.



#### CERTIFICATION

I hereby certify that the information contained herein is true and complete to the best of my knowledge and belief.

Name  
*Edgar Runkel*  
Position  
UNIT HEAD

Company Exxon Corporation  
Box 1600 Midland, Texas

Date  
3-21-85

I hereby certify that the well location shown on this plat was plotted from field notes of actual surveys made by me or under my supervision, and that the same is true and correct to the best of my knowledge and belief.

Date Surveyed  
12-18-84

Registered Professional Engineer  
and/or Land Surveyor

*Bruce R. Pennell*

Certificate No.

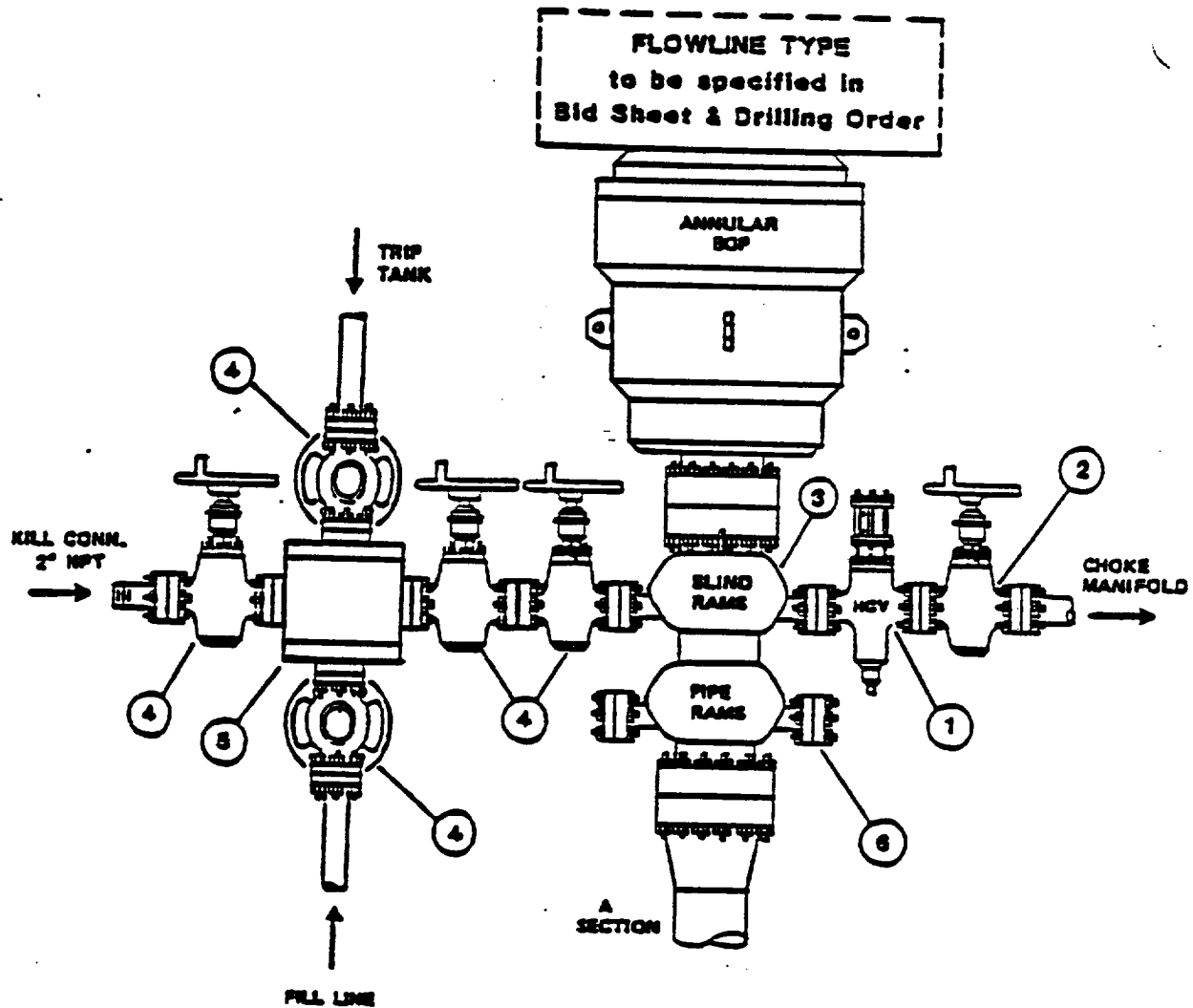
9062

10.5 Miles SE. of Hope, New Mexico

C.E. Sec. File No. WA-8742

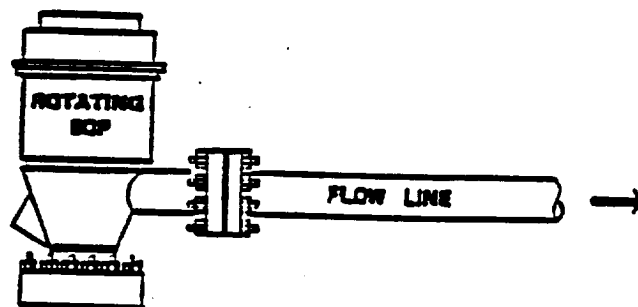
# TYPE RRA BOP STACK

## THREE PREVENTERS



## TYPE- RG

### ROTATING HEAD FOR GRAVITY TRIP TANK



## COM. JNENT SPECIFICATIONS

### Type RRA BOP Stack

1. Flanged hydraulically controlled gate valve -- 3" minimum nominal diameter -- same working pressure as BOP stack.
2. Flanged plug gate valve -- 3" minimum nominal diameter -- same working pressure as BOP stack.
3. BOP outlets must be 2" minimum nominal diameter for kill line and 3" minimum diameter for choke line.
4. Flanged plug or gate valve -- 2" minimum nominal diameter -- same working pressure as BOP stack.
5. Flanged cross or two (2) flanged tees.
6. Any BOP side outlet flange, located below the bottom ram, must be equipped with a blind flange.

NOTE: Each BOP stack must have separate side outlet connections for kill and choke lines, unless specific approval for a single side-outlet is obtained from the Exxon Division Drilling Manager prior to rig-up. Such approval will not be granted unless the equipment arrangement conforms to the specifications shown on pages 14 and 15 of this Section.

DRILLING PLAN  
Altwein Federal Comm. #1  
Section 12, T-19-S, R-23-E  
Eddy County, New Mexico

1. Estimated tops of important geological markers:

San Andres:	630'
Cisco :	6,000'
Morrow :	8,300'

2. Estimated depths at which the top of anticipated water, oil, gas or other mineral-bearing formations are expected to be encountered and the plan for protecting such resources.

	<u>Depth</u>	<u>Protection</u>
Deepest FW:	1,700'	Casing and Cement
Cisco :	6,000'	Casing and Cement
Atoka :	8,000'	Casing and Cement
Morrow :	8,300'	Casing and Cement

3. Minimum specifications for pressure control equipment:

- A. Wellhead Equipment: Thread type, 3000 psi WP for 13-3/8" x 8-5/8" x 5-1/2" casing program with 2-7/8" tubing hanger.
- B. Blowout Preventers: Refer to attached drawings and lists of equipment titled "Type RRA" for description of BOP stacks and choke manifold
- C. BOP Control Unit : Unit will be hydraulically operated and have two control systems.
- D. Testing : Upon installation, the type SA Diverter for the 13-3/8" surface casing will be actuated to assure proper working order.

Upon installation, the TYPE RRA BOP's for the 8-5/8" intermediate casing will be tested to a low pressure (200-300 psi) and to a high pressure of 2000 psi. Casing rams will be tested in a like manner. An operational test of the blowout preventers will be performed on each round trip (but not more than once each day); the annular and pipe ram preventers will be closed on drill pipe and the blind rams will be closed while pipe is out of the hole.

R-23-E 1

R-24-E 6

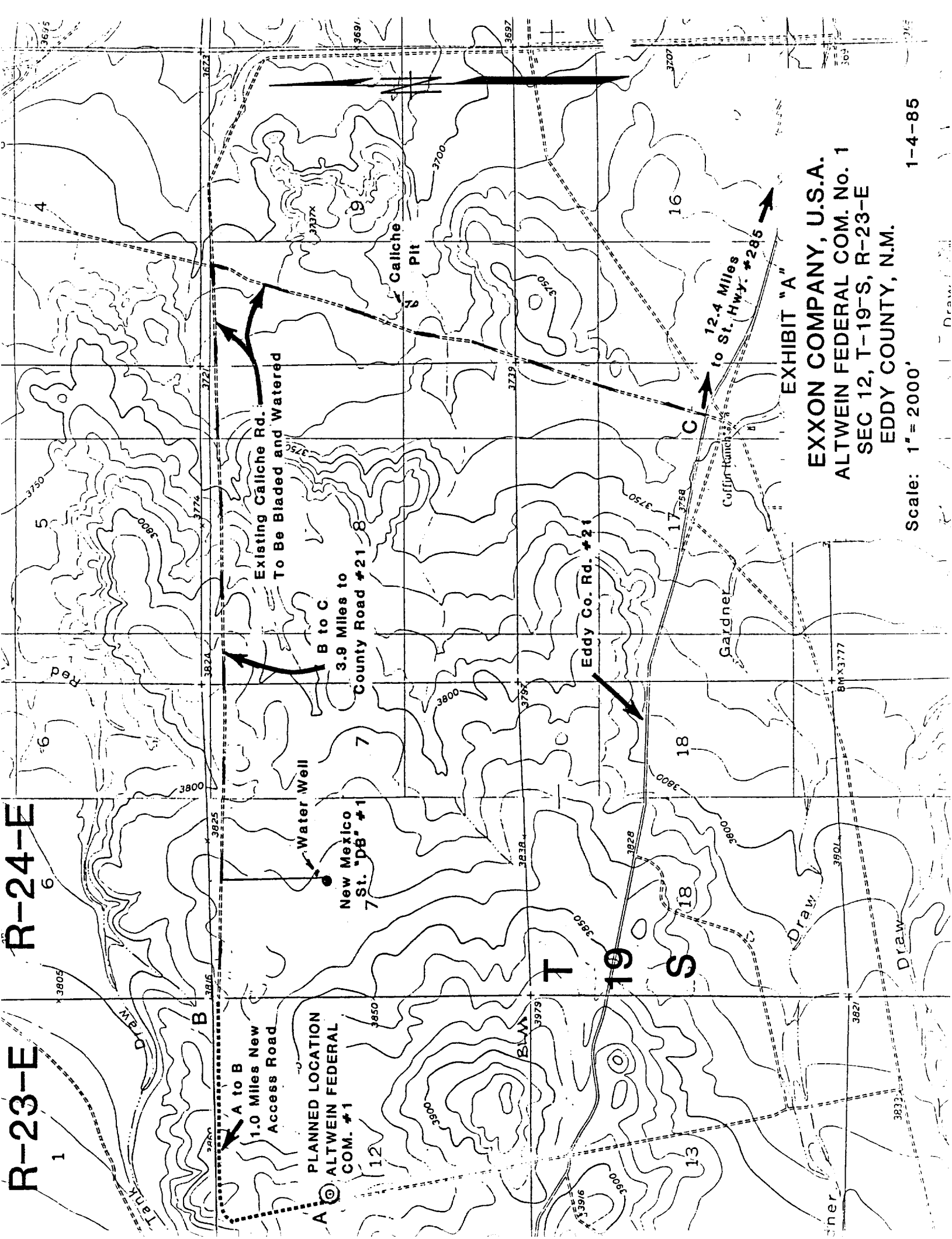
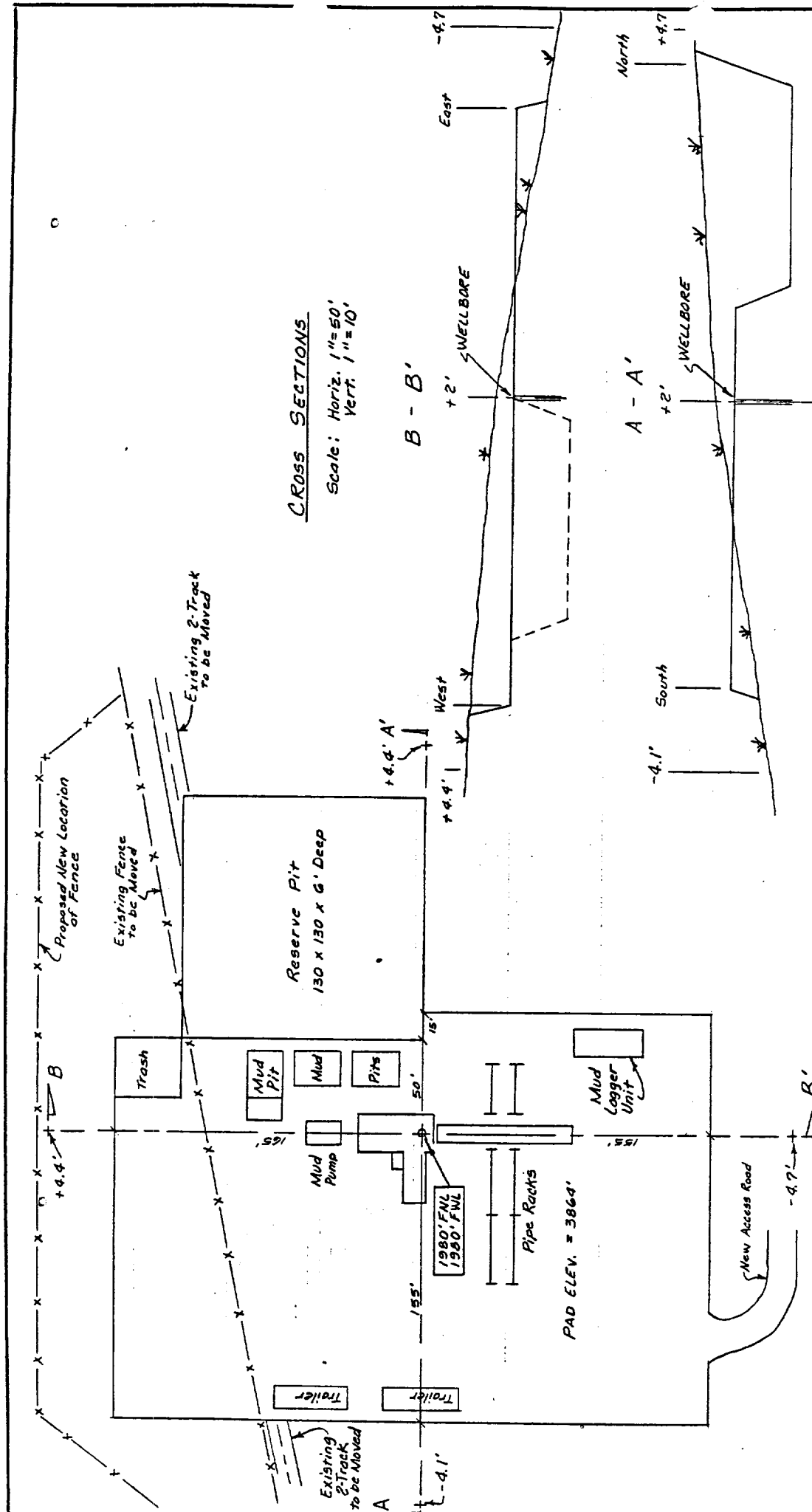


EXHIBIT "A"

EXXON COMPANY, U.S.A.  
ALTWEIN FEDERAL COM. No. 1  
SEC 12, T-19-S, R-23-E  
EDDY COUNTY, N.M.

Scale: 1" = 2000'

1-4-85



CROSS SECTIONS  
 Scale: Horiz. 1"=50'  
 Vert. 1"=10'

B - B'

A - A'

EXHIBIT "B"

WELLSITE LAYOUT  
 SCALE: 1"=50'  
 V - Door East

ALTWEIN FEDERAL COM. No. 1 SEC. 12 - 19S - 23E EDDY COUNTY, N. MEX.		EXON COMPANY, USA, (a division of Exxon Corporation) PRODUCTION DEPARTMENT	DATE 1-7-92 SCALE 50' H/V	FILE NO. WB-1987
DRAWN S.L. PATTERSON CHECKED _____	ENGR. SECTION J.A. MICKELSON APPROVED _____			