

RECEIVED BY UNITED STATES  
DEPARTMENT OF THE INTERIOR

GEOLOGICAL SURVEY

## APPLICATION FOR PERMIT TO DRILL, DEEPEN, OR PLUG BACK

1a. TYPE OF WORK

O. C. D.

DIRECTIONAL ☒DEEPEN ☐PLUG BACK ☐

b. TYPE OF WELL

OIL  
WELL ☒GAS  
WELL ☐

OTHER

SINGLE  
ZONE ☐MULTIPLE  
ZONE ☒

2. NAME OF OPERATOR

Siete Oil and Gas Corporation

3. ADDRESS OF OPERATOR

Post Office Box 2523, Roswell, New Mexico

4. LOCATION OF WELL (Report location clearly and in accordance with any State requirements.)\*

At surface

1850' FNL, 2310' FEL

At proposed prod. zone

same

14. DISTANCE IN MILES AND DIRECTION FROM NEAREST TOWN OR POST OFFICE\*

13.3 miles Southeast of Loco Hills, New Mexico

15. DISTANCE FROM PROPOSED\*

LOCATION TO NEAREST  
PROPERTY OR LEASE LINE, FT.  
(Also to nearest drlg. unit line, if any)

330'

18. DISTANCE FROM PROPOSED LOCATION\*

TO NEAREST WELL, DRILLING, COMPLETED,  
OR APPLIED FOR, ON THIS LEASE, FT.

1520'

21. ELEVATIONS (Show whether DF, RT, GR, etc.)

3627 GR

23.

## PROPOSED CASING AND CEMENTING PROGRAM

SIZE OF HOLE	SIZE OF CASING	WEIGHT PER FOOT	SETTING DEPTH	QUANTITY OF CEMENT
17 1/2"	13 3/8"	48#	350'	400 sxs Class C
7 7/8"	5 1/2"	15.5#	4,500'	2,200 sxs Class C

Selectively perforate and treat pay zone

## Attachments:

Survey Plat (C-102) - construction material

Survey Plat (C-102) - (Caliche Pit) construction material

Supplemental Drilling Data

Surface Use Plan

Surface Use Plan - Archaeology Report for caliche pit

IN ABOVE SPACE DESCRIBE PROPOSED PROGRAM: If proposal is to deepen or plug back, give data on present productive zone and proposed new productive zone. If proposal is to drill or deepen directionally, give pertinent data on subsurface locations and measured and true vertical depths. Give blowout preventer program, if any.

24.

SIGNED

TITLE

President

DATE May 29, 1985

(This space for Federal or State office use)

PERMIT NO.

APPROVAL DATE

APPROVED BY

TITLE

DATE

CONDITIONS OF APPROVAL, IF ANY:

APPROVAL SUBJECT TO  
GENERAL REQUIREMENTS AND  
SPECIAL STIPULATIONS  
ATTACHED

## Instructions

**General:** This form is designed for submitting proposals to perform certain well operations, as indicated, on all types of lands and leases for appropriate action by either a Federal or a State agency, or both, pursuant to applicable Federal and/or State laws and regulations. Any necessary special instructions concerning the use of this form and the number of copies to be submitted, particularly with regard to local, area, or regional procedures and practices, either are shown below or will be issued by, or may be obtained from, the local Federal and/or State office.

**Item 1:** If the proposal is to redrill to the same reservoir at a different subsurface location or to a new reservoir, use this form with appropriate notations. Consult applicable State or Federal regulations concerning subsequent work proposals or reports on the well.

**Item 4:** If there are no applicable State requirements, locations on Federal or Indian land should be described in accordance with Federal requirements. Consult local State or Federal office for specific instructions.

**Item 14:** Needed only when location of well cannot readily be found by road from the land or lease description. A plat, or plats, separate or on this reverse side, showing the roads to, and the surveyed location of, the well, and any other required information, should be furnished when required by Federal or State agency offices.

**Items 15 and 18:** If well is to be, or has been directionally drilled, give distances for subsurface location of hole in any present or objective production zone.

**Item 22:** Consult applicable Federal or State regulations, or appropriate officials, concerning approval of the proposal before operations are started.

U.S. GOVERNMENT PRINTING OFFICE : 1981 O - 345-739

### ESTIMATED FORMATION TOPS

Yates	2445'
Seven Rivers	2630'
Queen	3320'
Penrose	3570'
Grayburg	3775'
Premier	3940'
San Andres	3965'

**NEW MEXICO OIL CONSERVATION COMMISSION  
WELL LOCATION AND ACREAGE DEDICATION PLAT**

Form C-122  
Supersedes C-128  
Effective 1-1-65

All distances must be from the outer boundaries of the Section.

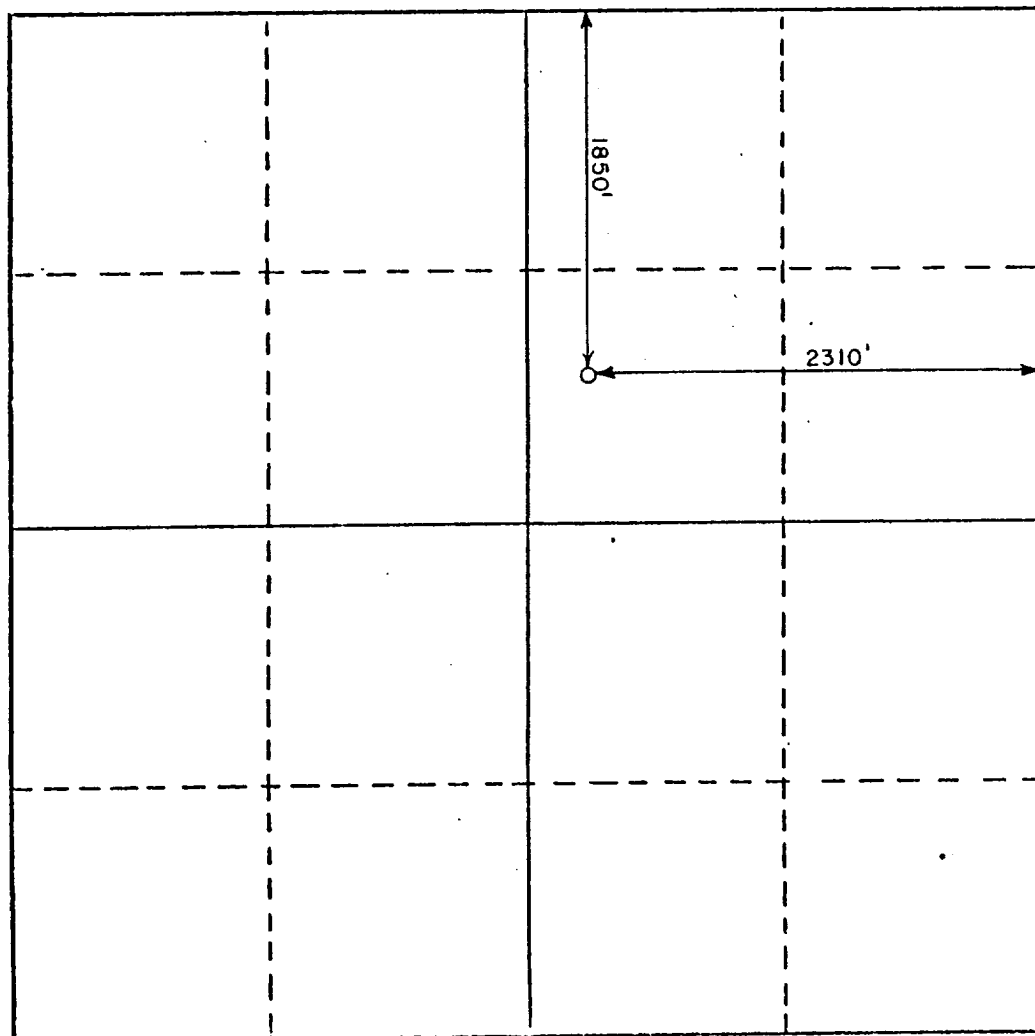
Operator <b>Siete Oil &amp; Gas Corporation</b>			Lease <b>Scottsdale Federal</b>		Well No. <b>3</b>
Unit Letter <b>G</b>	Section <b>27</b>	Township <b>18 South</b>	Range <b>31 East</b>	County <b>Eddy</b>	
Actual Footage Location of Well: <div style="display: flex; justify-content: space-between; align-items: center;"> <span><b>1850</b> feet from the <b>North</b> line and</span> <span><b>2310</b> feet from the <b>East</b> line</span> </div>					
Ground Level Elev. <b>3627</b>	Producing Formation <b>Queen</b>	Pool <b>Shugart - Y-SF-Q-G</b>		Dedicated Acreage <b>40</b> Acres	

1. Outline the acreage dedicated to the subject well by colored pencil or hatchure marks on the plat below.
2. If more than one lease is dedicated to the well, outline each and identify the ownership thereof (both as to working interest and royalty).
3. If more than one lease of different ownership is dedicated to the well, have the interests of all owners been consolidated by communitization, unitization, force-pooling, etc?

☐ Yes    ☐ No    If answer is "yes," type of consolidation \_\_\_\_\_

If answer is "no," list the owners and tract descriptions which have actually been consolidated. (Use reverse side of this form if necessary.) \_\_\_\_\_

No allowable will be assigned to the well until all interests have been consolidated (by communitization, unitization, forced-pooling, or otherwise) or until a non-standard unit, eliminating such interests, has been approved by the Commission.



**CERTIFICATION**

I hereby certify that the information contained herein is true and complete to the best of my knowledge and belief.

Name **Billy G. Underwood, Jr.**  
 Position **President**  
 Company **Siete Oil and Gas Corporation**  
 Date **May 29, 1985**

I hereby certify that the well location shown on this plat was plotted from field notes of actual surveys made by me or under my supervision, and that the same is true and correct to the best of my knowledge and belief.

May 20, 1985

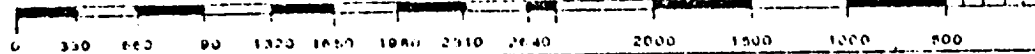
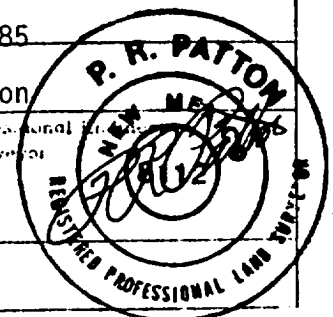
Date Surveyed

**P. R. Patton**

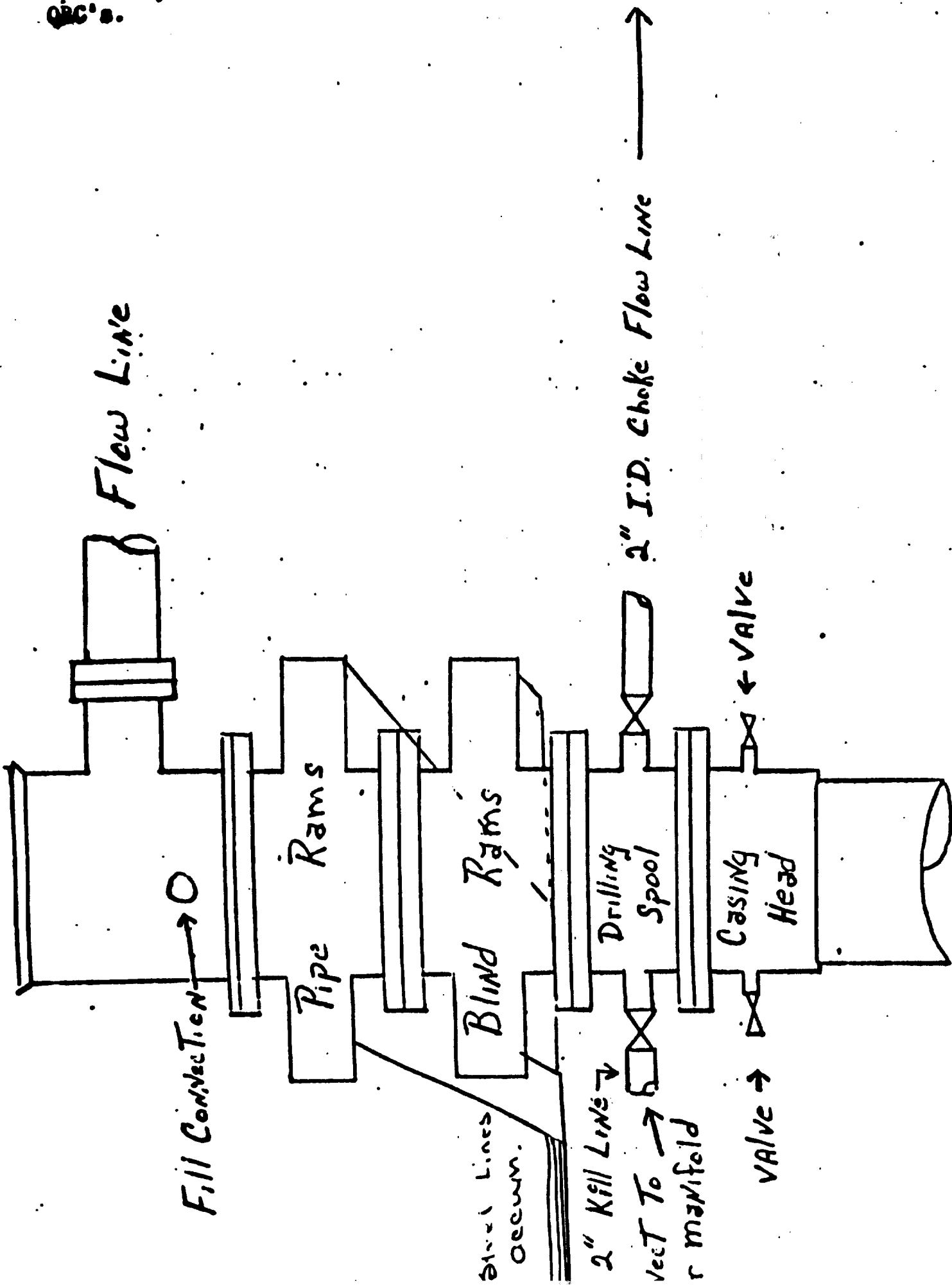
Registered Professional Engineer  
and/or Land Surveyor

8112

Certificate No.



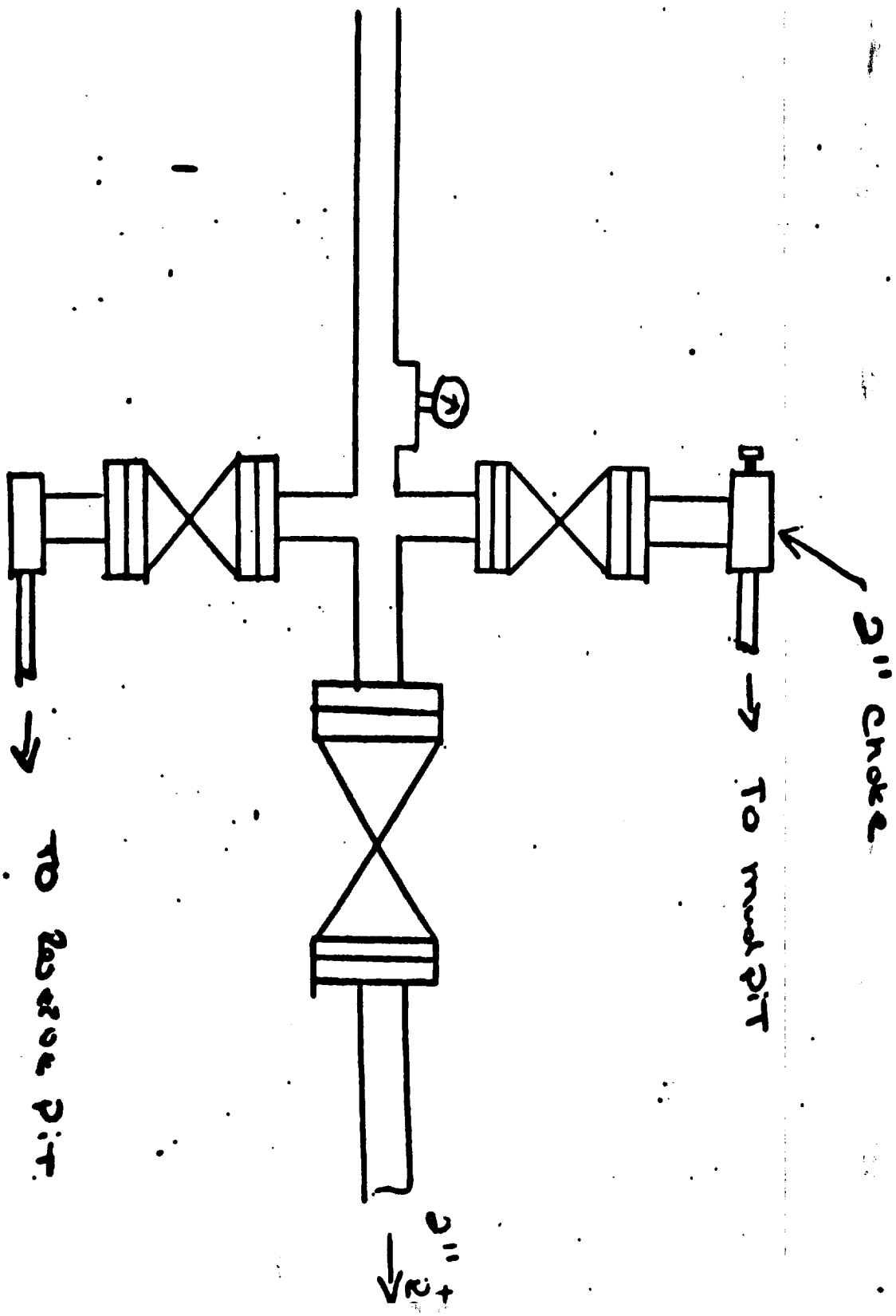
For example, for large  
Pipe & Blind Rams are hydraulic  
operated, Cameron 10" 5000/  
QBC's.



Accumulator

air operated,  
80 gal. reservoir

14 fuel lines  
Pip. Rams & Bl.  
Rams



SUPPLEMENTAL DRILLING DATA  
SIETE OIL AND GAS CORPORATION

RE: SIETE OIL AND GAS CORPORATION

Scottsdale Federal #3  
1850' FNL, 2310' FEL  
Section 27: T-18-S, R-31-E  
Eddy County, New Mexico  
Lease Number - LC 029392B

In conjunction with Form 9-331C, Application to Drill the subject well Siete Oil and Gas Corporation submits the following ten times of pertinent information in accordance with U.S.G.S. requirements.

1. The geologic surface is Quaternary.
2. The estimated tops of geologic markers are as follows:

Yates	2355'
Queen	3480'
Penrose	3730'
Grayburg	3910'
Premier	4040'

3. The estimated depths at which anticipated water, oil or gas are expected to be encountered.

Water:	Approximately 200'
Oil or Gas:	Queen approximately 3480' - 4500'

4. Proposed casing program: (See form 9-331C)

<u>Size</u>	<u>Interval</u>	<u>Weight</u>	<u>Grade</u>	<u>Joint</u>	<u>New or Used</u>
13 3/8"	0-350'	48#	K-55	S.T.&C.	New
5 1/2"	0-4500'	15.5#	J-55	S.T.&C.	New

5. Pressure Control Equipment: The blowout preventer will be a two ram type preventer. A sketch is attached.
6. Mud Program: A copy of the mud program to be used is attached.
7. Auxiliary Equipment: Master valve on blowout preventer.
8. Testing, logging and Coring Programs:

Possible drillstem tests are planned through the Queen.

Logging: Compensated Neutron-Formation Density-Gamma Ray-Caliper  
Dual Laterolog-Rxo.

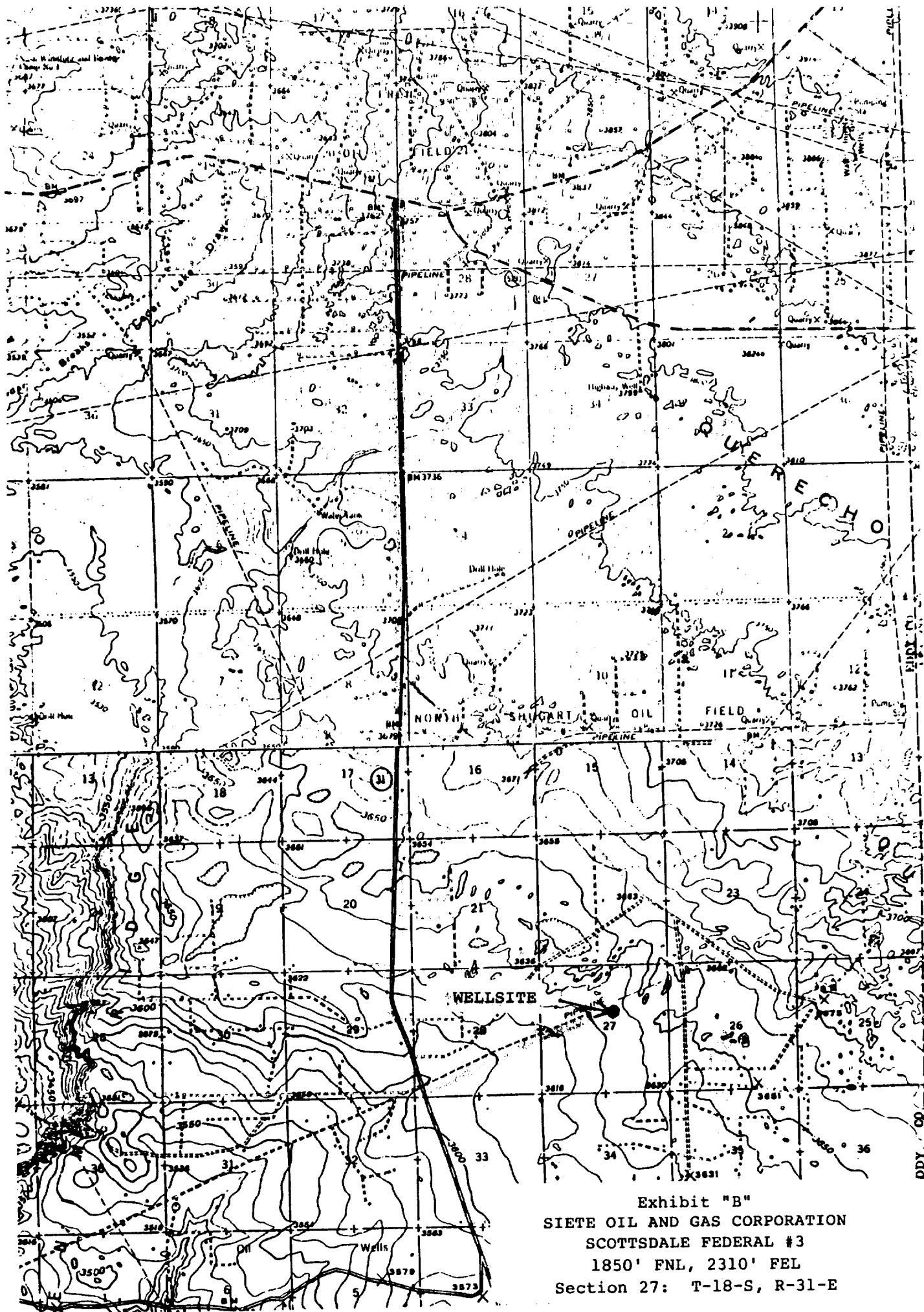


Exhibit "B"  
SIETE OIL AND GAS CORPORATION  
SCOTTSDALE FEDERAL #3  
1850' FNL, 2310' FEL  
Section 27: T-18-S, R-31-E



# Rig 19

## Drilling Site Plat

