

RECEIVED Y

NM OIL CONS. COM. DD 88210  
SUBMIT IN DUPLICATE  
(Other instructions on reverse side)

30-015-25328  
Form approved.  
Budget Bureau No. 1004-0136  
Expires August 31, 1985

UNITED STATES  
DEPARTMENT OF THE INTERIOR  
BUREAU OF LAND MANAGEMENT

APPLICATION FOR PERMIT TO DRILL, DEEPEN, OR PLUG BACK

1a. TYPE OF WORK

DRILL ☒

DEEPEN ☐

PLUG BACK ☐

b. TYPE OF WELL

OIL WELL ☒

GAS WELL ☐

OTHER

SINGLE ZONE ☒

MULTIPLE ZONE ☐

2. NAME OF OPERATOR

CANTRO EXPLORATION, INC. ✓

(Bob Green)

(512-826-2981)

3. ADDRESS OF OPERATOR

909 N.E. Loop 410 (Suite 711), San Antonio TX 78029

4. LOCATION OF WELL (Report location clearly and in accordance with any State requirements.)\*

At surface

2240' FSL & 1650' FWL of Section

At proposed prod. zone  
same

(Unit K)

(NE 1/4 SW 1/4)

14. DISTANCE IN MILES AND DIRECTION FROM NEAREST TOWN OR POST OFFICE\*

14 air miles south-southeast of Loco Hills, NM

15. DISTANCE FROM PROPOSED\*

LOCATION TO NEAREST

PROPERTY OR LEASE LINE, FT.

(Also to nearest drlg. unit line, if any)

400'

(400')

16. NO. OF ACRES IN LEASE

1080

17. NO. OF ACRES ASSIGNED TO THIS WELL

40

18. DISTANCE FROM PROPOSED LOCATION\*

TO NEAREST WELL, DRILLING, COMPLETED, OR APPLIED FOR, ON THIS LEASE, FT.

1060'

19. PROPOSED DEPTH

2500'

20. ROTARY OR CABLE TOOLS

Rotary

21. ELEVATIONS (Show whether DF, RT, GR, etc.)

3495' G.L.

22. APPROX. DATE WORK WILL START\*

July 5, 1985

23.

PROPOSED CASING AND CEMENTING PROGRAM

SIZE OF HOLE	SIZE OF CASING	WEIGHT PER FOOT	SETTING DEPTH	QUANTITY OF CEMENT
12 1/4"	8 5/8"	23#	350'	Circulate to surface
7 7/8"	5 1/2"	14#	2500'	Circulate back into 8 5/8" csg.

Pay zone will be selectively perforated and stimulated as needed for optimum production.

Attached are: 1. Well Location & Acreage Dedication Plat  
2. Supplemental Drilling Data  
3. Surface Use Plan

Operator's Authority: Designation of Operator from Tenneco Oil Company, record lessee, is being mailed to BLM, Carlsbad NM

Bond Coverage: Lessee's \$150,000 nationwide bond.

IN ABOVE SPACE DESCRIBE PROPOSED PROGRAM: If proposal is to deepen or plug back, give data on present productive zone and proposed new productive zone. If proposal is to drill or deepen directionally, give pertinent data on subsurface locations and measured and true vertical depths. Give blowout preventer program, if any.

24.

SIGNED

James A. Knaut

TITLE

Agent

DATE

June 20, 1985

(This space for Federal or State office use)

PERMIT NO.

APPROVAL DATE

APPROVED BY

Mark H. H. H.

TITLE

APPROVED

UNRESERVED RESERVE AREA

DATE

7-12-85

CONDITIONS OF APPROVAL, IF ANY:

APPROVAL SUBJECT TO  
GENERAL REQUIREMENTS AND  
SPECIAL STIPULATIONS

ATTACHED

\*See Instructions On Reverse Side

Title 18 U.S.C. Section 1001, makes it a crime for any person knowingly and willfully to make to any department or agency of the United States any false, fictitious or fraudulent statements or representations as to any matter within its jurisdiction.

# WELL LOCATION AND ACREAGE DEDICATION PLAT

Supersedes C-128  
Effective 1-1-85

All distances must be from the outer boundaries of the Section.

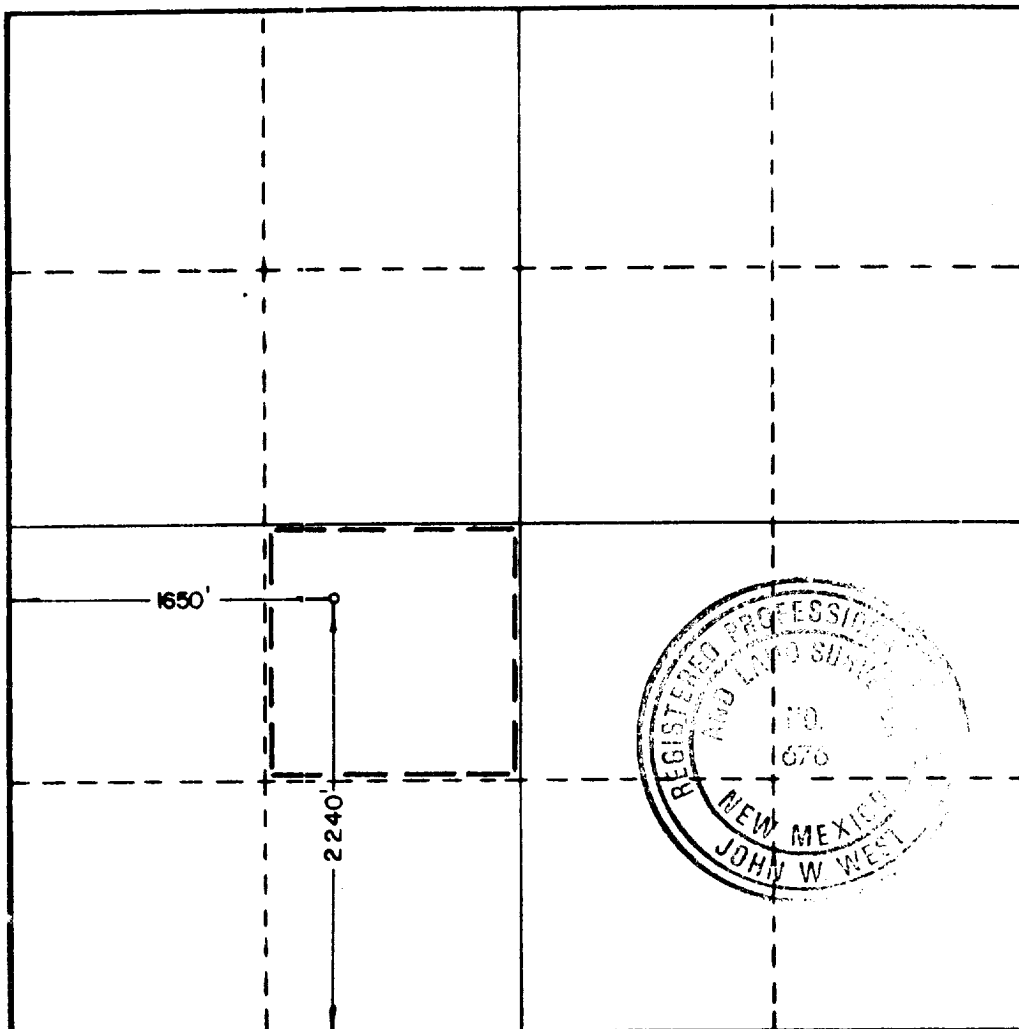
Operator <b>CANTRO EXPLORATION, INC.</b>			Lease <b>TENNECO FED.</b>		Well No. <b>1</b>
Unit Letter <b>K</b>	Section <b>21</b>	Township <b>19S</b>	Range <b>31E</b>	County <b>EDDY</b>	
Actual Footage Location of Well: <b>1650</b> feet from the <b>WEST</b> line and <b>2240</b> feet from the <b>SOUTH</b> line					
Ground Level Elev. <b>3491.5</b>	Producing Formation <b>Yates &amp; Seven Rivers</b>		Pool <b>North Hackberry</b>		Dedicated Acreage: <b>40</b> Acres

1. Outline the acreage dedicated to the subject well by colored pencil or hachure marks on the plat below.
2. If more than one lease is dedicated to the well, outline each and identify the ownership thereof (both as to working interest and royalty).
3. If more than one lease of different ownership is dedicated to the well, have the interests of all owners been consolidated by communitization, unitization, force-pooling, etc?

☐ Yes ☐ No If answer is "yes," type of consolidation \_\_\_\_\_

If answer is "no," list the owners and tract descriptions which have actually been consolidated. (Use reverse side of this form if necessary.) \_\_\_\_\_

No allowable will be assigned to the well until all interests have been consolidated (by communitization, unitization, forced-pooling, or otherwise) or until a non-standard unit, eliminating such interests, has been approved by the Commission.



## CERTIFICATION

I hereby certify that the information contained herein is true and complete to the best of my knowledge and belief.

*James A. Knauf*

Name

James A. Knauf

Position

Agent

Company

CANTRO EXPLORATION, INC.

Date

June 22, 1985

I hereby certify that the well location shown on this plat was plotted from field notes of actual surveys made by me or under my supervision, and that the same is true and correct to the best of my knowledge and belief.

Date Surveyed

6/17 & 6/18/85

Registered Professional Engineer and/or Land Surveyor

*John W. West*

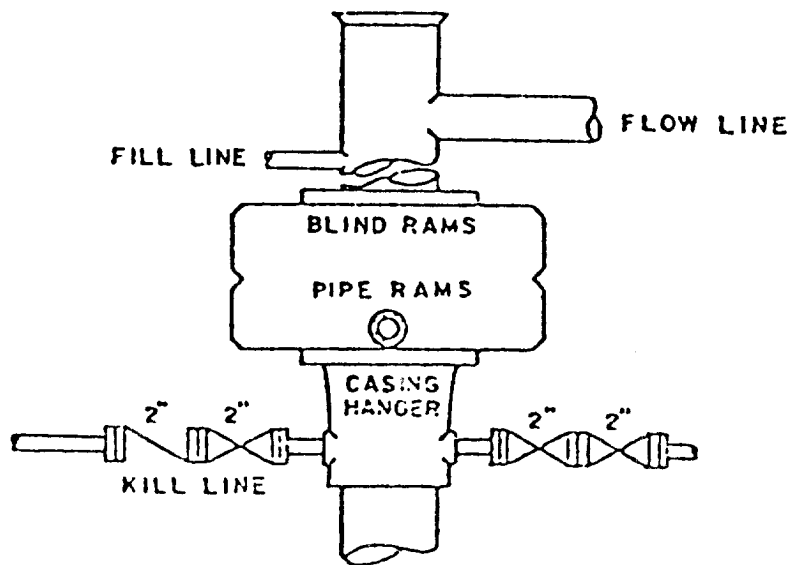
Certificate No. JOHN W. WEST, 676

RONALD J. EIDSON, 3239

0 320 640 960 1280 1600 1920 2240 2560 2880 3200 3520 3840 4160 4480 4800 5120 5440 5760 6080 6400

BLOWOUT PREVENTER ARRANGEMENT

Cantro Exploration, Inc.  
Well #1 Tenneco Federal  
NE $\frac{1}{4}$ SW $\frac{1}{4}$  Sec. 21-19S-31E



## SUPPLEMENTAL DRILLING DATA

CANTRO EXPLORATION, INC.  
WELL #1 TENNECO FEDERAL  
NE $\frac{1}{4}$ SW $\frac{1}{4}$  SEC. 21-19S-31E  
EDDY COUNTY, NEW MEXICO

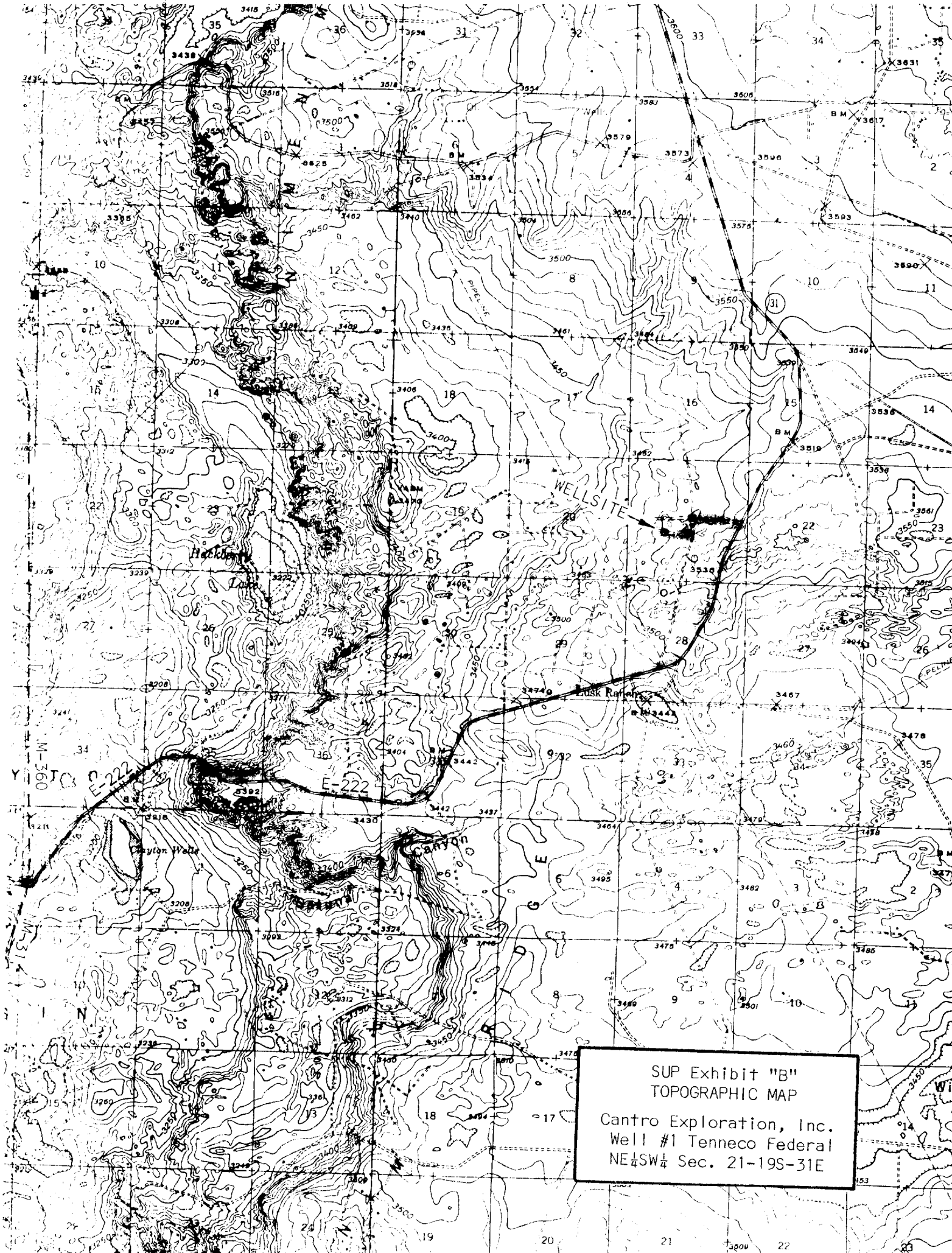
1. SURFACE FORMATION: Sandy soils of Quaternary Age.
2. ESTIMATED TOPS OF GEOLOGIC MARKERS (Ground Elevation - 3492'):

Tansill	1970'
Yates	2155'
Capitan Reef	2355'
3. ANTICIPATED POROSITY ZONES:

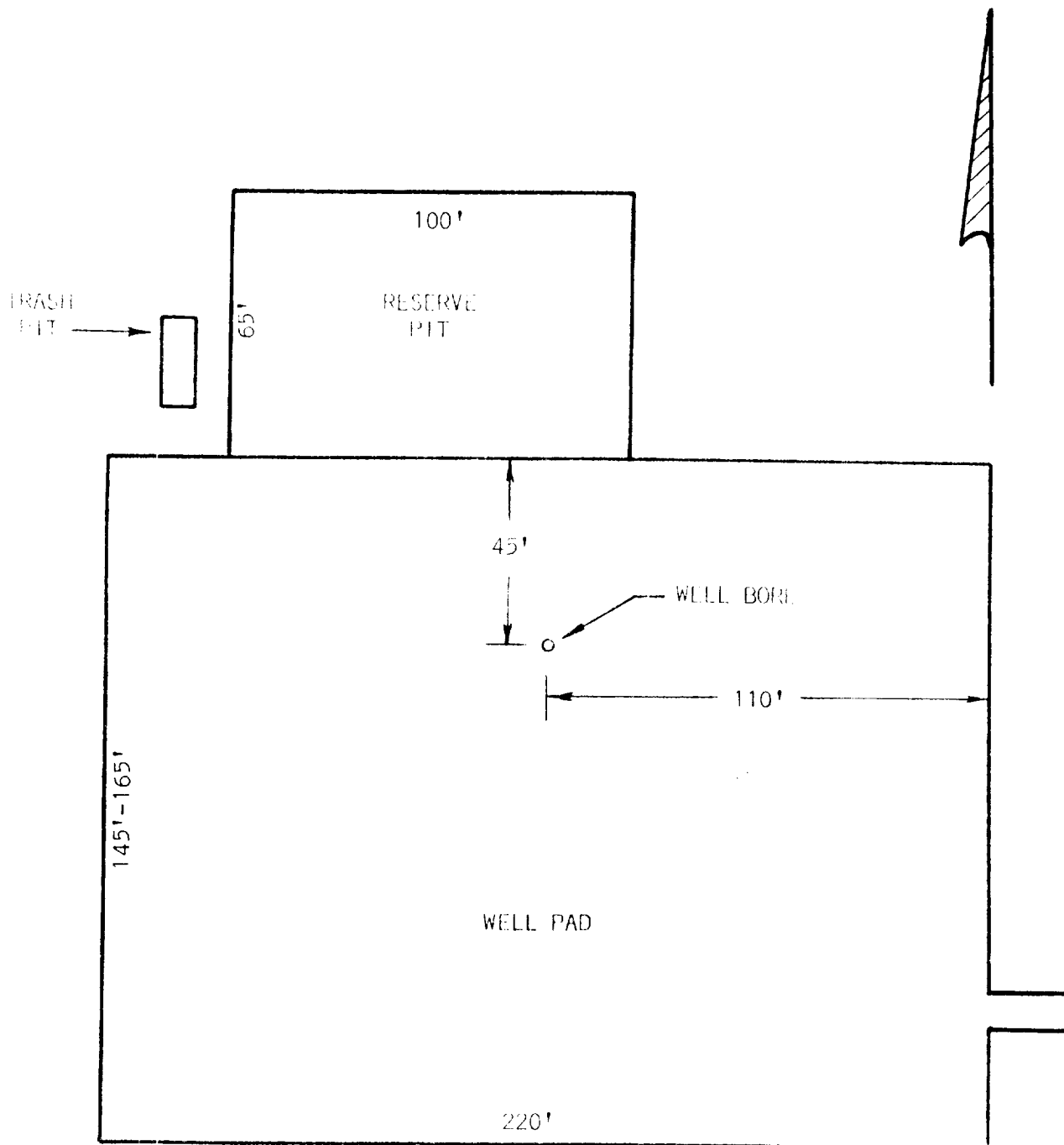
Water	- above 200'
Oil	- Yates
Oil	- Capitan Reef
4. CASING DESIGN:

<u>Size</u>	<u>Interval</u>	<u>Weight</u>	<u>Grade</u>	<u>Joint</u>
8 5/8"	0 - 350'	24#	K-55	STC
5 1/2"	0 - 2500'	14#	K-55	STC
5. PRESSURE CONTROL EQUIPMENT: ~~An annular-type preventor~~ or a double ram-type preventor will be used.
6. CIRCULATING MEDIUM:

0 - 350'	Fresh water with gel added if needed for viscosity.
350 - 2500'	Salt water conditioned as necessary for control of viscosity and water loss.
7. AUXILIARY EQUIPMENT: Drill string safety valve.
8. TESTING, LOGGING AND CORING PROGRAMS: No coring or DST's are planned. Electric logs will include a Gamma Ray/Neutron log.
9. ABNORMAL PRESSURES, TEMPERATURES OR GAS: None anticipated.
10. ANTICIPATED STARTING DATE: It is planned that drilling operations will commence about July 5, 1985. Duration of drilling, testing, and completion operations should be two to six weeks.



SUP Exhibit "B"  
TOPOGRAPHIC MAP  
Cantro Exploration, Inc.  
Well #1 Tenneco Federal  
NE 1/4 SW 1/4 Sec. 21-19S-31E



SUP Exhibit "D"  
SKETCH OF WELL PAD  
Cantro Exploration, Inc.  
Well #1 Tenneco Federal  
NE $\frac{1}{4}$ SW $\frac{1}{4}$  Sec. 21-19S-31E