

NM OIL CONS. COMMISSION  
DRAWER DD  
ARTESIA  
UNITED STATES  
DEPARTMENT OF THE INTERIOR  
GEOLOGICAL SURVEYRECEIVED BY  
T IN TRIPLICATE\*

AUG 12 1985

O. C. D.

Form approved.  
Budget Bureau No. 42-R1425.

30-D15-25367

LEASE DESIGNATION AND SERIAL NO.

NM-13621

IF INDIAN, ALLOTTEE OR TRIBE NAME

## APPLICATION FOR PERMIT TO DRILL, DEEPEN OR PLUG BACK

## 1a. TYPE OF WORK

DRILL ☒DEEPEN ☐PLUG BACK ☐

## 7. UNIT AGREEMENT NAME

## b. TYPE OF WELL

OIL  
WELL ☐GAS  
WELL ☒

OTHER

SINGLE  
ZONE ☐MULTIPLE  
ZONE ☐

## 8. FARM OR LEASE NAME

Amoco "QT" Federal

## 9. WELL NO.

2

## 10. FIELD AND POOL, OR WILDCAT

Antelope Sink Upper Penn

11. SEC., T., R., M., OR BLK.  
AND SURVEY OR AREA

Section 29-T19S-R24E

## 12. COUNTY OR PARISH

Eddy

## 13. STATE

NM

## 2. NAME OF OPERATOR

Yates Petroleum Corporation

## 3. ADDRESS OF OPERATOR

207 South Fourth Street - Artesia, NM 88210

## 4. LOCATION OF WELL (Report location clearly and in accordance with any State requirements.)\*

At surface

660' FSL &amp; 660' FEL (Unit P)

At proposed prod. zone

Same

## 14. DISTANCE IN MILES AND DIRECTION FROM NEAREST TOWN OR POST OFFICE\*

Approximately 15 miles southwest of Artesia, New Mexico

## 15. DISTANCE FROM PROPOSED\*

LOCATION TO NEAREST

PROPERTY OR LEASE LINE, FT.

(Also to nearest drlg. unit line, if any)

660'

## 16. NO. OF ACRES IN LEASE

640

## 17. NO. OF ACRES ASSIGNED

TO THIS WELL

320

## 18. DISTANCE FROM PROPOSED LOCATION\*

TO NEAREST WELL, DRILLING, COMPLETED,  
OR APPLIED FOR, ON THIS LEASE, FT.

## 19. PROPOSED DEPTH

7750'

## 20. ROTARY OR CABLE TOOLS

Rotary

## 21. ELEVATIONS (Show whether DF, RT, GR, etc.)

3790' GR

## 22. APPROX. DATE WORK WILL START\*

ASAP

## 23.

## PROPOSED CASING AND CEMENTING PROGRAM

SIZE OF HOLE	SIZE OF CASING	WEIGHT PER FOOT	SETTING DEPTH	QUANTITY OF CEMENT
17-1/2"	13-3/8"	48# K-55	Approx. 300'	400 sacks - circulate
12-1/4"	8-5/8"	36# K-55	" 1150'	1400 sacks - circulate
7-7/8"	5-1/2"	15.5# or 17# K-55	TD	300 sacks

We propose to drill and test the Canyon and intermediate formations. Will set approximately 300' of surface casing to shut off gravel and cavings. Approximately 1150' of intermediate casing will be set with cement circulated. If commercial, production casing will be ran and cemented with adequate cover, perforated and stimulated as needed for production.

MUD PROGRAM: FW gel/LCM to 1150'; fresh water to 4900'; SW gel/Starch/Drispak to TD.

BOP PROGRAM: BOP's & hydril on 8-5/8" casing and tested, pipe rams tested daily, blind rams on trips.

GAS NOT DEDICATED

IN ABOVE SPACE DESCRIBE PROPOSED PROGRAM: If proposal is to deepen or plug back, give data on present productive zone and proposed new productive zone. If proposal is to drill or deepen directionally, give pertinent data on subsurface locations and measured and true vertical depths. Give blowout preventer program, if any.

## 24.

SIGNED

Chyfr May

TITLE Regulatory Agent

DATE July 2, 1985

(This space for Federal or State office use)

PERMIT NO.

APPROVAL DATE

APPROVED BY

Dr. Wood (Acting)

TITLE

DATE

8-8-85

CONDITIONS OF APPROVAL, IF ANY:

Subject to  
Like Approval  
by State

Unorthodox  
location

APPROVAL SUBJECT TO  
GENERAL REQUIREMENTS AND  
SPECIAL STIPULATIONS  
ATTACHED

**NEW MEXICO OIL CONSERVATION COMMISSION  
WELL LOCATION AND ACREAGE DEDICATION PLAT**

Form C-102  
Supersedes C-128  
Effective 1-1-65

All distances must be from the outer boundaries of the Section.

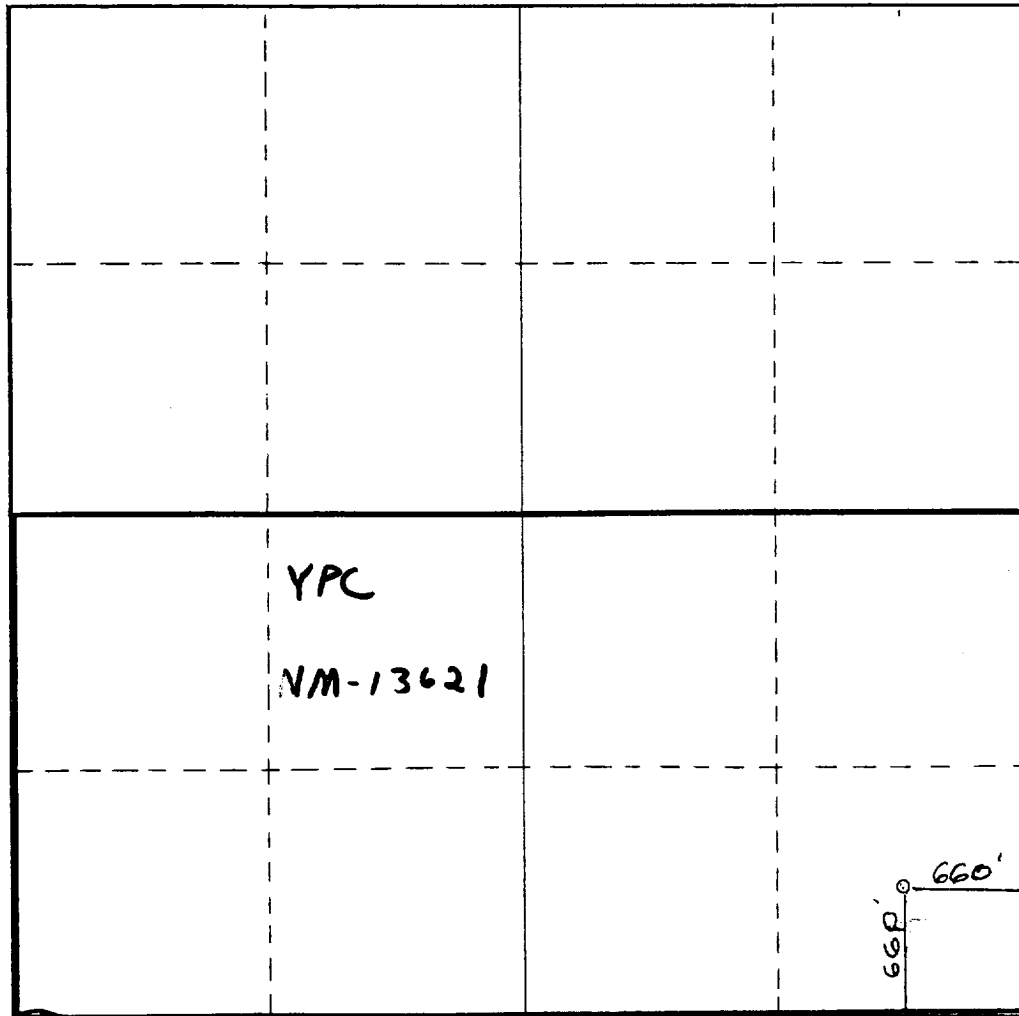
Owner <b>YATES PETROLEUM CORPORATION</b>			Lease <b>AMOCO QT FED.</b>		Well No. <b>2</b>
Unit Letter <b>P</b>	Section <b>29</b>	Township <b>19 South</b>	Range <b>24 East</b>	County <b>Eddy</b>	
Actual Footage Location of Well: <div style="display: flex; justify-content: space-between;"> <span><b>660</b> feet from the <b>South</b> line and</span> <span><b>660</b> feet from the <b>East</b> line</span> </div>					
Ground Level Elev. <b>3790</b>	Producing Formation <b>CANYON</b>	Pool <b>ANTELOPE SINK UPPER PENN</b>	Dedicated Acreage: <b>320</b> Acres		

1. Outline the acreage dedicated to the subject well by colored pencil or hachure marks on the plat below.
2. If more than one lease is dedicated to the well, outline each and identify the ownership thereof (both as to working interest and royalty).
3. If more than one lease of different ownership is dedicated to the well, have the interests of all owners been consolidated by communitization, unitization, force-pooling, etc?

☐ Yes    ☐ No    If answer is "yes," type of consolidation \_\_\_\_\_

If answer is "no," list the owners and tract descriptions which have actually been consolidated. (Use reverse side of this form if necessary.) \_\_\_\_\_

No allowable will be assigned to the well until all interests have been consolidated (by communitization, unitization, forced-pooling, or otherwise) or until a non-standard unit, eliminating such interests, has been approved by the Commission.



**CERTIFICATION**

I hereby certify that the information contained herein is true and complete to the best of my knowledge and belief.

*Clifton May*

Name

**Clifton May**

Position

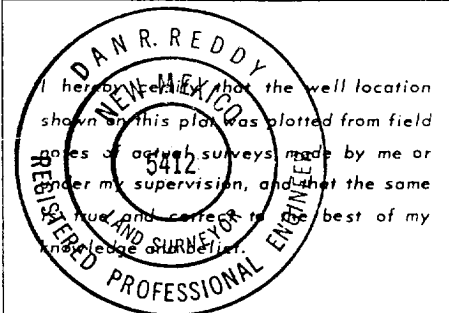
**Regulatory Agent**

Company

**Yates Petroleum Corporation**

Date

**July 2, 1985**



Date Surveyed

**6-26-85**

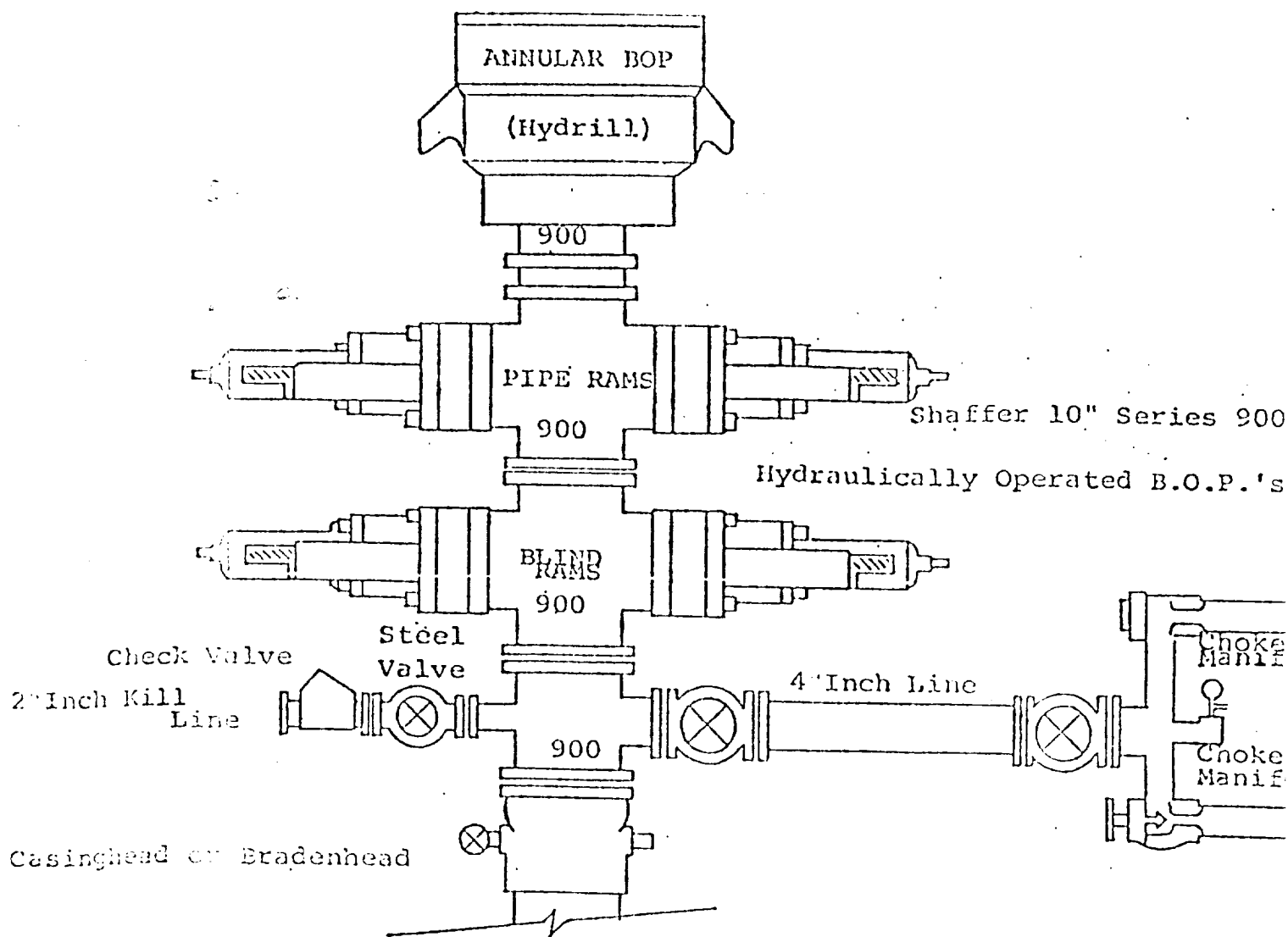
Registered Professional Engineer and/or Land Surveyor

*Dan R. Reddy*

Certificate No.

**N.M. PE&LS #5412**

0 330 660 990 1320 1650 1980 2310 2640 2000 1500 1000 500 0



THE FOLLOWING CONSTITUTE MINIMUM BLOWOUT PREVENTER REQUIREMENTS

1. All preventers to be hydraulically operated with secondary manual control installed prior to drilling out from under casing.
2. Choke outlet to be a minimum of 4" diameter.
3. Kill line to be of all steel construction of 2" minimum diameter.
4. All connections from operating manifolds to preventers to be all steel. hole or tube a minimum of one inch in diameter.
5. The available closing pressure shall be at least 15% in excess of that required with sufficient volume to operate the B.O.P.'s.
6. All connections to and from preventer to have a pressure rating equivalent to that of the B.O.P.'s.
7. Inside blowout preventer to be available on rig floor.
8. Operating controls located a safe distance from the rig floor.
9. Hole must be kept filled on trips below intermediate casing.
10. D. P. float must be installed and used below zone of first gas intrusion.

YATES PETROLEUM CORPORATION  
Amoco "QT" Federal #2  
660' FSL & 660' FEL of  
Section 29-T19S-R24E  
Eddy County, New Mexico

In conjunction with Form 9-331C, Application for Permit to Drill subject well, Yates Petroleum Company submits the following ten items of pertinent information in accordance with BLM requirements.

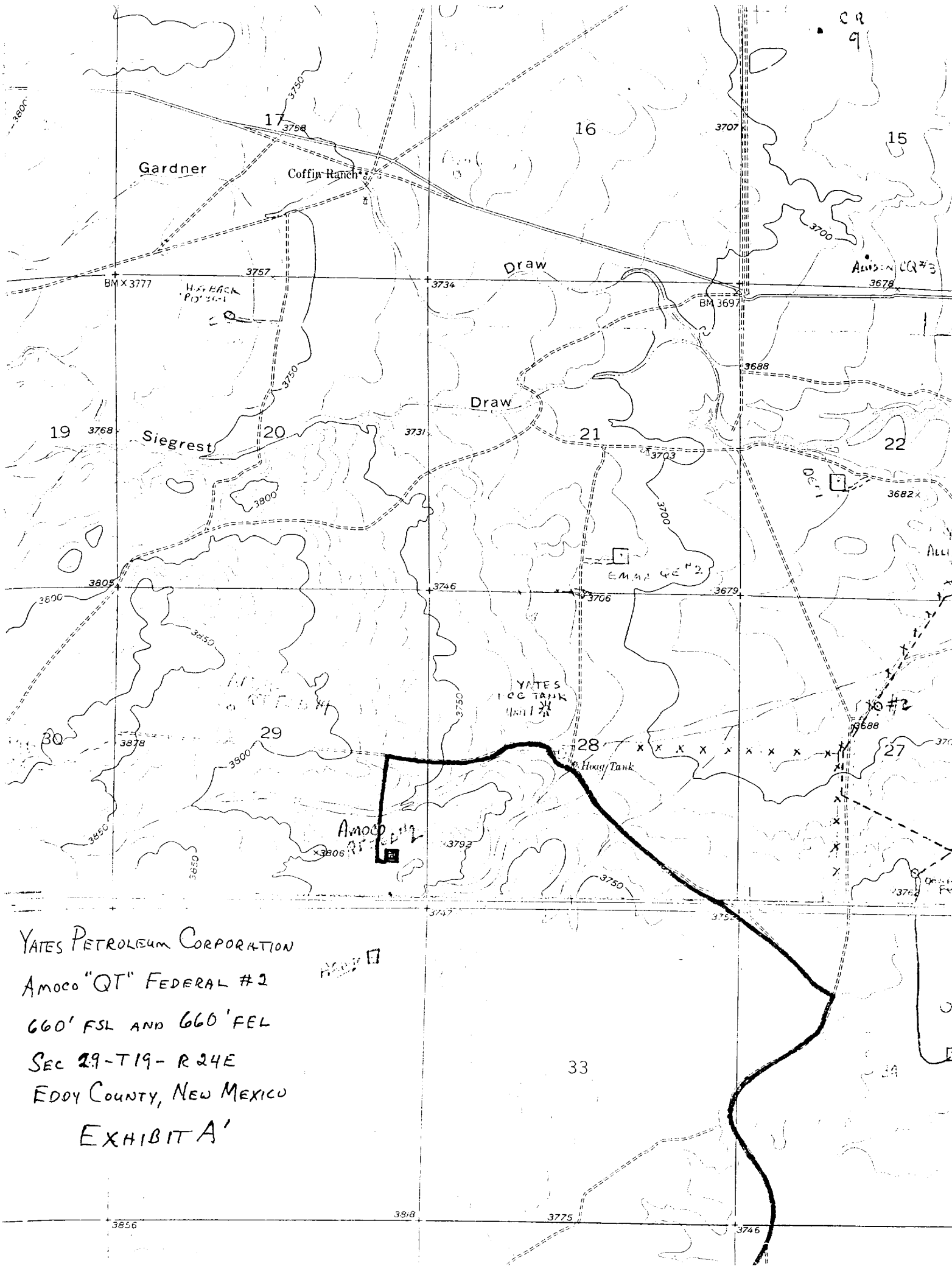
1. The geologic surface formation is alluvium.
2. The estimated tops of geologic markers are as follows:

San Andres	380'	Lower Canyon	7285'
Glorieta	1740'	Lower Canyon Pay	7455'
Abo	3774'	Base Lower Canyon Bank	7582'
Wolfcamp Limestone	4986'	TD	7750'
CC Tank Pay	6292'		
3. The estimated depths at which anticipated water, oil or gas formations are expected to be encountered:

Water: Approximately 170'

Gas Possibilities: Wolfcamp 4986'  
CC Tank 6292'  
Canyon 7285'
4. Proposed Casing Program: See Form 9-331C.
5. Pressure Control Equipment: See Form 9-331C.
6. Mud Program: See Form 9-331C.
7. Auxiliary Equipment: Kelly Cock; pit level indicators and flow sensor equipment; sub with full-opening valve on floor, drill pipe connection.
8. Testing, Logging and Coring Program:

Samples: 10' out from under surface casing  
DST's: As warranted  
Coring: None  
Logging: CNL/LDT from TD to casing with CNL/GR on to surface; DLL from TD to casing; RXo from TD to 6000'
9. No abnormal pressures or temperatures are anticipated.
10. Anticipated starting date: As soon as possible after approval.



YATES PETROLEUM CORPORATION

AMOCO "QT" FEDERAL #2

660' FSL AND 660' FEL

SEC 29-T19-R24E

EDDY COUNTY, NEW MEXICO

EXHIBIT A'

# YATES PETROLEUM CORP.

## Exhibit C

