

UNITED STATES
DEPARTMENT OF THE INTERIOR
GEOLOGICAL SURVEY

RECEIVED BY PLICATE*
(Other ins. logs on reverse side)
AUG 28 1985
O. C. D.
ANTESITA, NM

5. LEASE DESIGNATION AND SERIAL NO.

NM 025777

6. IF INDIAN, ALLOTTEE OR TRIBE NAME

7. UNIT AGREEMENT NAME

8. FARM OR LEASE NAME

Geronimo Federal

9. WELL NO.

3

10. FIELD AND POOL, OR WILDCAT

Shugart-7-SF-D-67

11. SEC., T., R., M., OR BLK. AND SURVEY OR AREA

Section 24: T-18-S, R-31-E

12. COUNTY OR PARISH 13. STATE

Eddy New Mexico

1a. TYPE OF WORK

DRILL DEEPEN PLUG BACK

b. TYPE OF WELL

OIL WELL GAS WELL OTHER SINGLE ZONE MULTIPLE ZONE

2. NAME OF OPERATOR

Siete Oil and Gas Corporation

3. ADDRESS OF OPERATOR

P.O. Box 2523, Roswell, New Mexico 88201

4. LOCATION OF WELL (Report location clearly and in accordance with any State requirements.)*

At surface

990' FNL, 990' FEL

At proposed prod. zone

same

14. DISTANCE IN MILES AND DIRECTION FROM NEAREST TOWN OR POST OFFICE*

14.75 miles Southeast of Loco Hills, New Mexico

15. DISTANCE FROM PROPOSED* LOCATION TO NEAREST PROPERTY OR LEASE LINE, FT. (Also to nearest drig. unit line, if any)

950'

16. NO. OF ACRES IN LEASE

320

17. NO. OF ACRES ASSIGNED TO THIS WELL

40

18. DISTANCE FROM PROPOSED LOCATION* TO NEAREST WELL, DRILLING, COMPLETED, OR APPLIED FOR, ON THIS LEASE, FT.

1320'

19. PROPOSED DEPTH

4500'

20. ROTARY OR CABLE TOOLS

Rotary

21. ELEVATIONS (Show whether DF, RT, GR, etc.)

3706' GP

22. APPROX. DATE WORK WILL START*

10/01/85

23. PROPOSED CASING AND CEMENTING PROGRAM

SIZE OF HOLE	SIZE OF CASING	WEIGHT PER FOOT	SETTING DEPTH	QUANTITY OF CEMENT
12 1/4"	8 5/8"	24#, J-55	400'	400 sxs Class "C" Cement
7 7/8"	4 1/2"	10.5#, J-55	4500'	2200 sxs Class "C" Cement

Selectively perforate and treat pay zone

Attachments:

- Survey Plat (C-102)
- Supplemental Drilling Data
- Surface Use Plan

*Forced IDI
API & NL
9-6-85*

IN ABOVE SPACE DESCRIBE PROPOSED PROGRAM: If proposal is to deepen or plug back, give data on present productive zone and proposed new productive zone. If proposal is to drill or deepen directionally, give pertinent data on subsurface locations and measured and true vertical depths. Give blowout preventer program, if any.

24. SIGNED [Signature] TITLE President DATE June 17, 1985

(This space for Federal or State office use)

PERMIT NO. _____ APPROVAL DATE _____

APPROVED BY Orig: Sgd. Charles S. [Signature] TITLE _____ DATE 8-27-85

CONDITIONS OF APPROVAL, IF ANY:

APPROVAL SUBJECT TO
GENERAL REQUIREMENTS AND
SPECIAL STIPULATIONS
ATTACHED

NEW MEXICO OIL CONSERVATION COMMISSION
WELL LOCATION AND ACREAGE DEDICATION PLAT

Form C-102
Supersedes C-128
Effective 1-1-65

All distances must be from the outer boundaries of the Section.

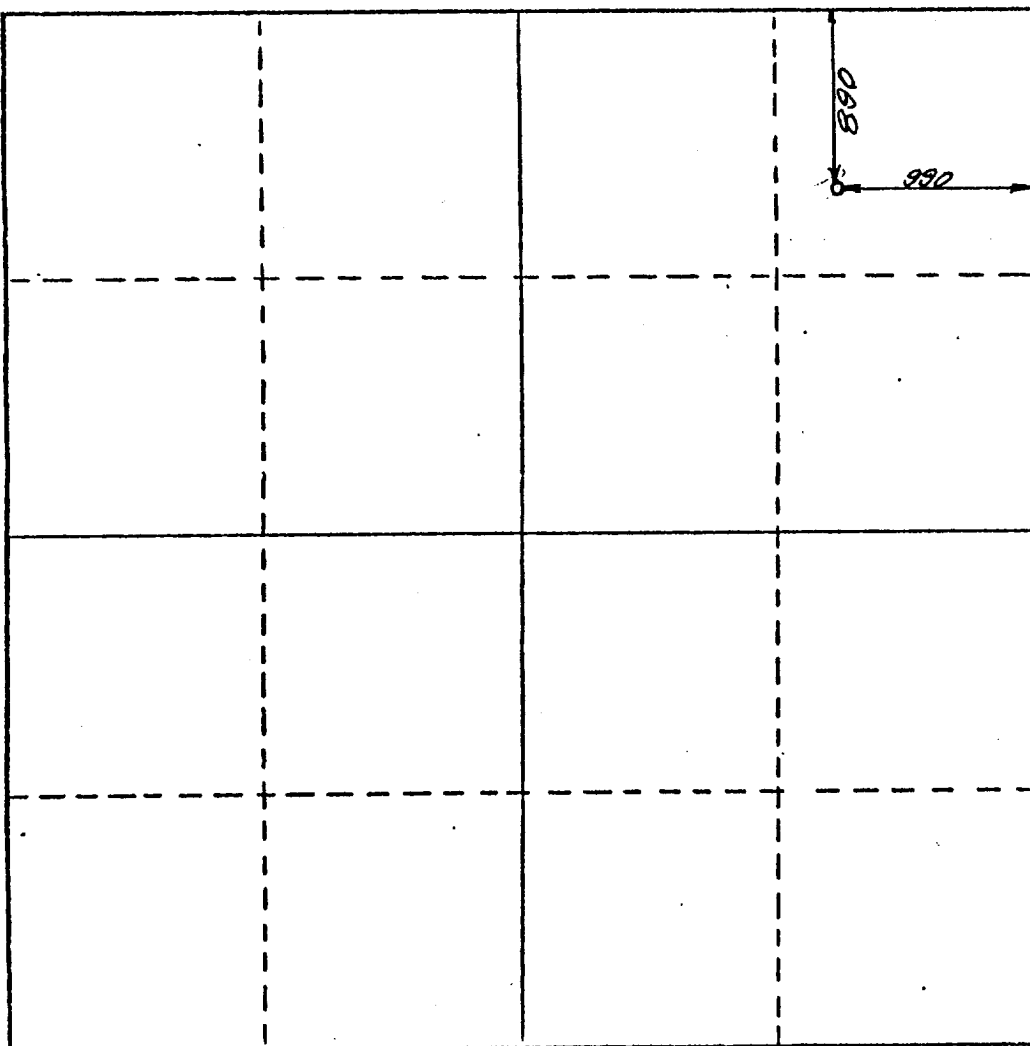
Operator Siete Oil & Gas Corporation		Lease Geronimo Federal		Well No. 3
Unit Letter A	Section 24	Township 18 South	Range 31 East	County Eddy
Actual Footage Location of Well: 890 feet from the North line and 990 feet from the East line				
Ground Level Elev. 3706	Producing Formation Delaware	Pool Shugart	Dedicated Acreage: 40 Acres	

1. Outline the acreage dedicated to the subject well by colored pencil or hachure marks on the plat below.
2. If more than one lease is dedicated to the well, outline each and identify the ownership thereof (both as to working interest and royalty).
3. If more than one lease of different ownership is dedicated to the well, have the interests of all owners been consolidated by communitization, unitization, force-pooling, etc?

Yes No If answer is "yes," type of consolidation _____

If answer is "no," list the owners and tract descriptions which have actually been consolidated. (Use reverse side of this form if necessary.) _____

No allowable will be assigned to the well until all interests have been consolidated (by communitization, unitization, forced-pooling, or otherwise) or until a non-standard unit, eliminating such interests, has been approved by the Commission.



CERTIFICATION

I hereby certify that the information contained herein is true and complete to the best of my knowledge and belief.

A. J. Longo
Name

A. J. (Sonny) Longo

Position
Vice President

Company
Siete Oil and Gas Corporation

Date
August 23, 1985

I hereby certify that the well location shown on this plat was plotted from field notes of actual surveys made by me or under my supervision, and that the same is true and correct to the best of my knowledge and belief.

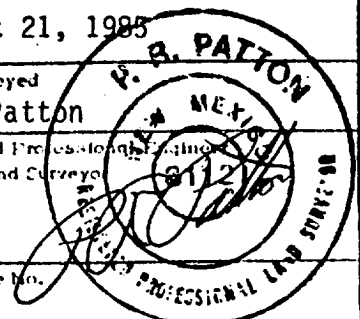
August 21, 1985

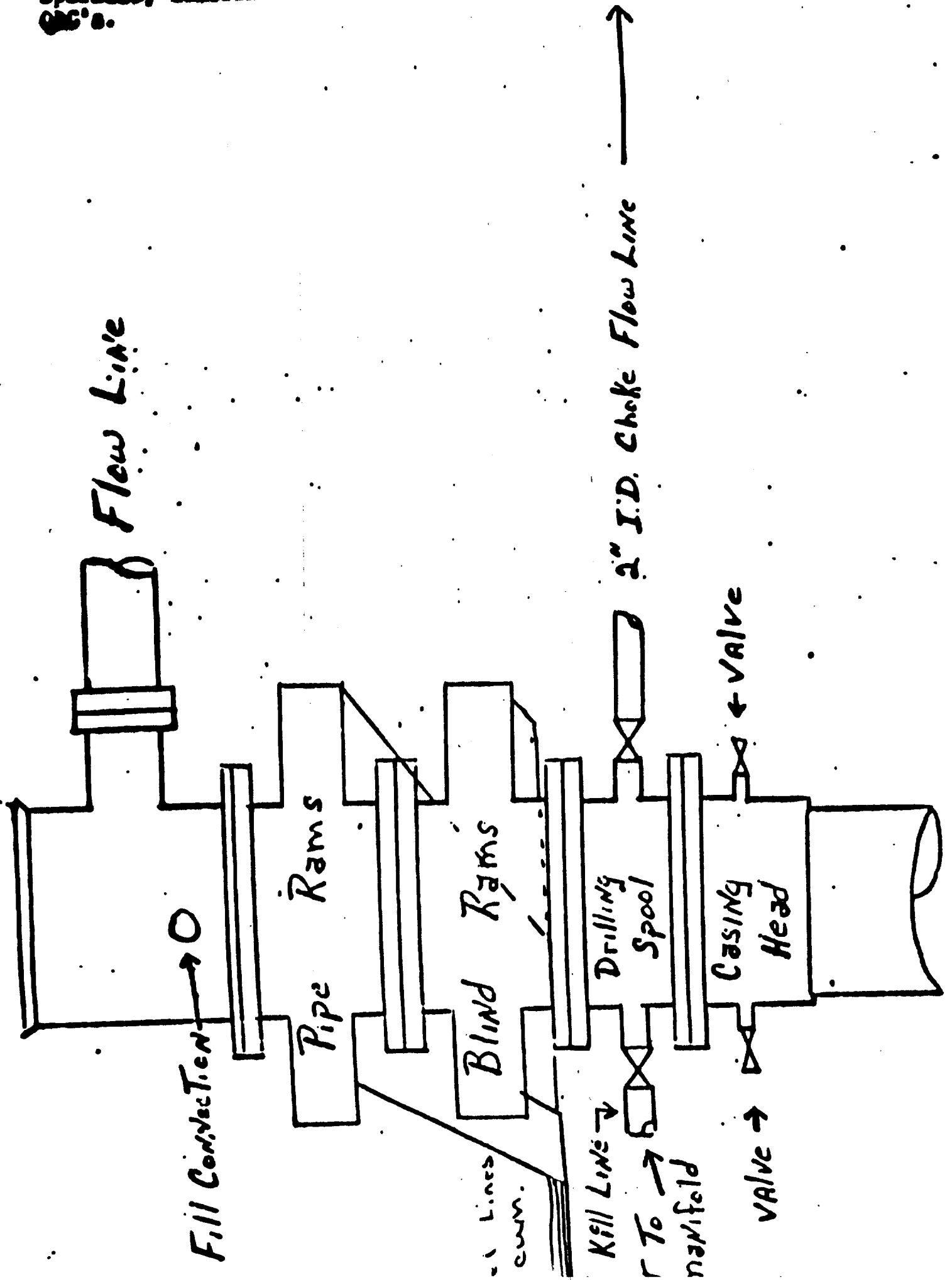
Date Surveyed
P.R. Patton

Registered Professional Engineer and/or Land Surveyor

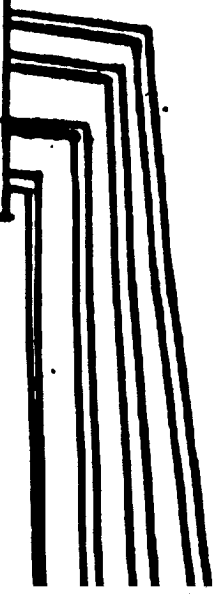
8112

Certificate No.

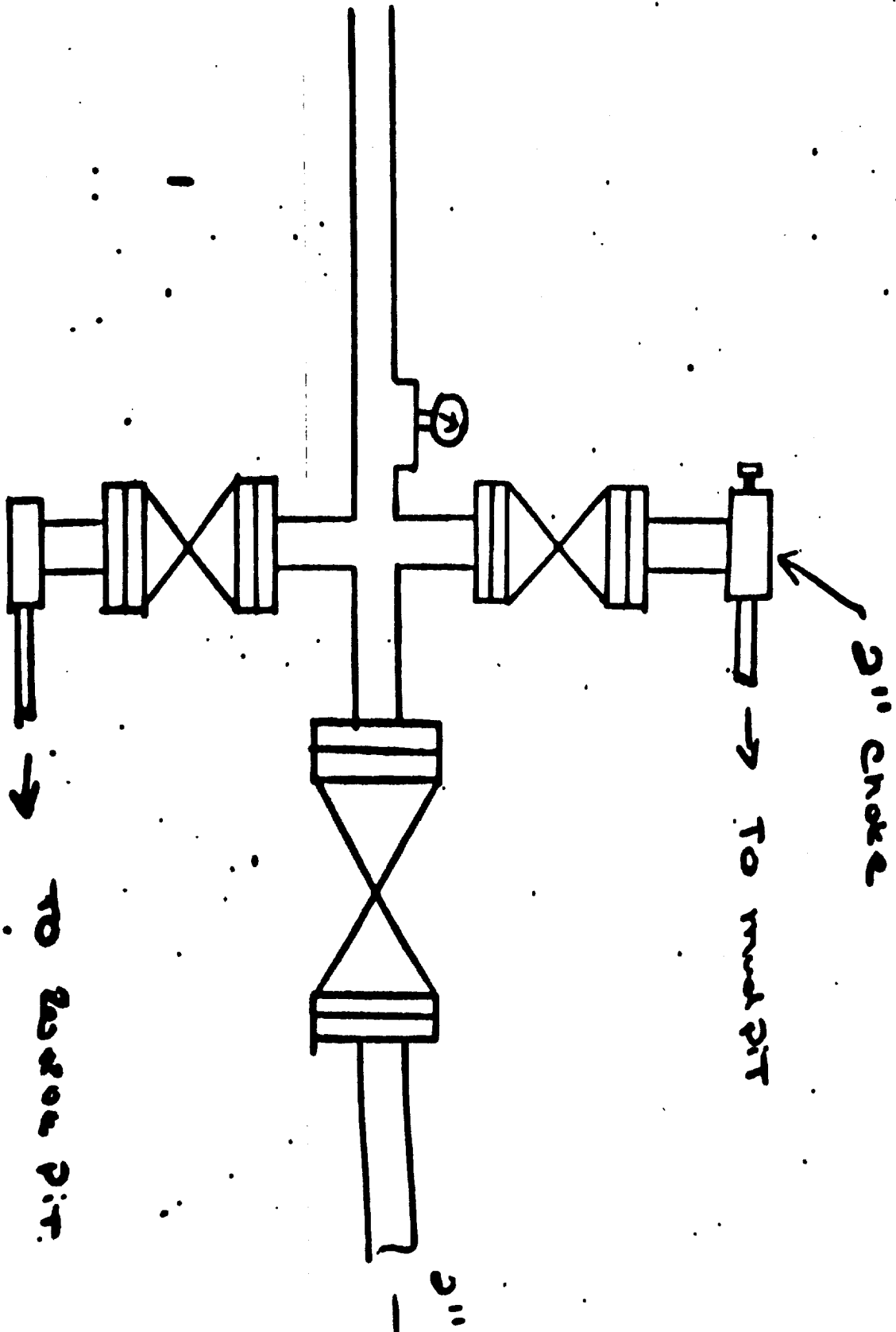




Accumulator
Air operated,
50 gal. reservoir



1 1/2" steel line
Pipe Rams 4
Rams



SUPPLEMENTAL DRILLING DATA

SIETE OIL AND GAS CORPORATION

RE: Siete Oil and Gas Corporation
Geronimo Federal #3
990' FNL & 990' FEL
Section 24: T-28-S, R-31-E
Eddy County, New Mexico
Lease Number - NM025777

In conjunction with Form 9-331C, Application to Drill the subject well, Siete Oil and Gas Corporation submits the following tem items of pertinent information in accordance with U.S.G.S. requirements.

1. The geologic surface is Quaternary.
2. The estimated tops of geologic markers are as follows:

Yates	2355'
Seven Rivers	2540'
Queen	3520'
Grayburg	3910'
San Andres	4070'

3. The estimated depths at which anticipated water, oil or gas are expected to be encountered:

Water:	Approximately 200'
Oil or Gas:	Grayburg approximately 3910' - 4070'

4. Proposed casing program: (see Form 9-331C)

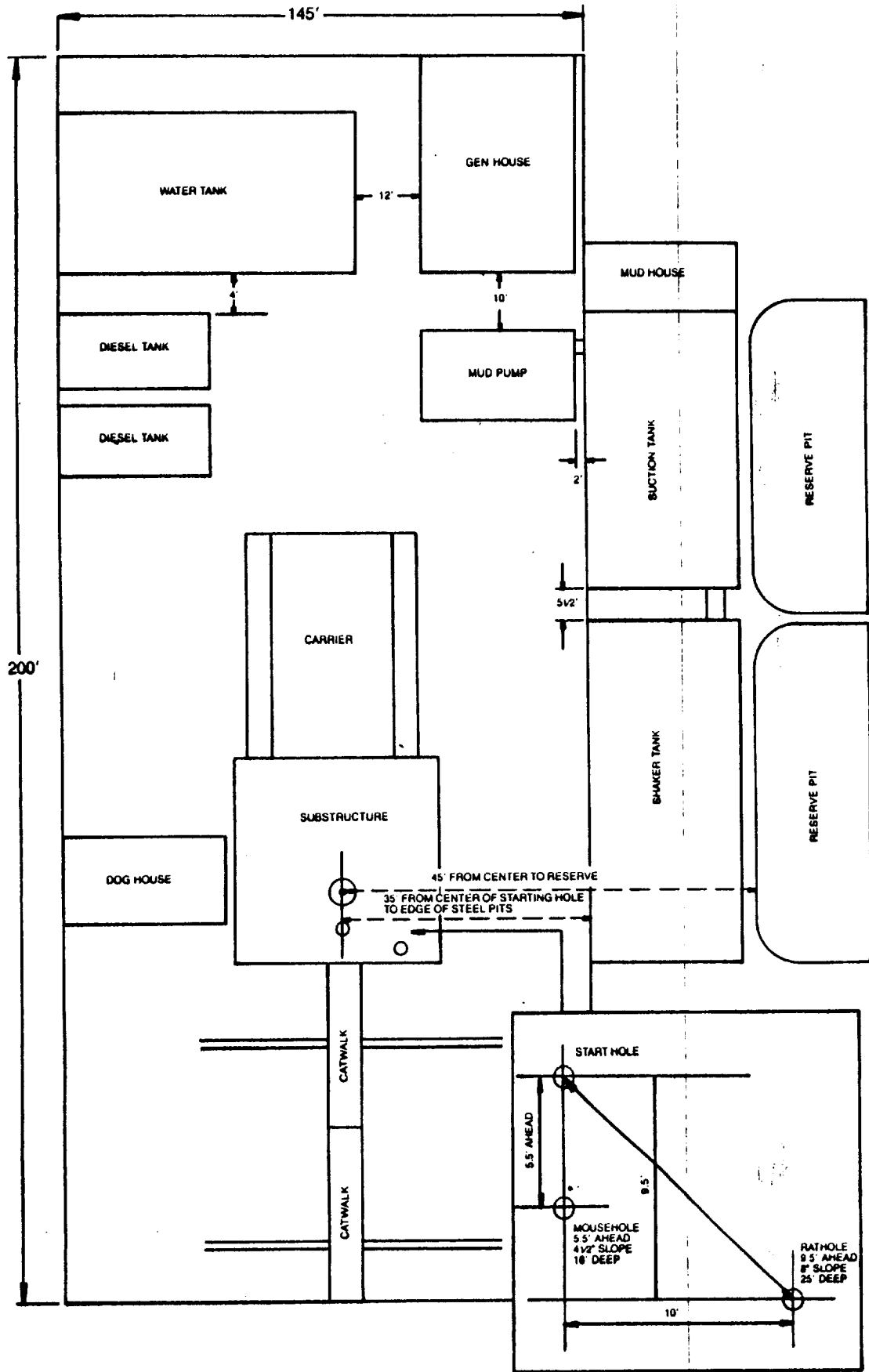
<u>Size</u>	<u>Interval</u>	<u>Weight</u>	<u>Grade</u>	<u>Joint</u>	<u>New or Used</u>
8 5/8"	0-400'	24#	J-55	S.T.&.C.	New
4 1/2"	0-4500'	10.5#	J-55	S.T.&.C.	New

5. Pressure Control Equipment: The blowout preventer will be an annular type preventer. A sketch is attached.
6. Mud Program: A copy of mud program to be used is attached.
7. Auxiliary equipment: Master valve on blowout preventer.
8. Testing, Logging and Coring Programs:

Possible drillstem tests and/or coring is planned through the Grayburg.
Logging: Compensated Neutron-Formation Density-Gamma Ray-Caliper
Dual Laterolog-Rxo

Rig 19

Drilling Site Plat



DESIGNATION OF OPERATOR

The undersigned is, on the records of the Bureau of Land Management, holder of lease

DISTRICT LAND OFFICE: Carlsbad, New Mexico

SERIAL No.: NM-025777

and hereby designates

NAME: Siete Oil & Gas Corporation

ADDRESS: P. O. Box 2523, Roswell, New Mexico 88201

as his operator and local agent, with full authority to act in his behalf in complying with the terms of the lease and regulations applicable thereto and on whom the supervisor or his representative may serve written or oral instructions in securing compliance with the Operating Regulations with respect to (describe acreage to which this designation is applicable):

Township 18 South, Range 31 East, N.M.P.M.
Section 24: NE/4 NE/4

FROM ZERO FEET TO THE TOP OF BONE SPRINGS.

It is understood that this designation of operator does not relieve the lessee of responsibility for compliance with the terms of the lease and the Operating Regulations. It is also understood that this designation of operator does not constitute an assignment of any interest in the lease.

In case of default on the part of the designated operator, the lessee will make full and prompt compliance with all regulations, lease terms, or orders of the Secretary of the Interior or his representative.

The lessee agrees promptly to notify the supervisor of any change in the designated operator.

18-31, Inc.

By: 

(Signature of lessee)

Wendell W. Iverson

June 10, 1985

(Date)

P. O. Box 1120, Roswell, NM 88201

(Address)