

RECEIVED BY UNITED STATES
DEPARTMENT OF THE INTERIOR
BUREAU OF LAND MANAGEMENT
OCT 29 1985

APPLICATION FOR PERMIT TO DRILL, DEEPEN, OR PLUG BACK

1a. TYPE OF WORK ARTESIA, OFFICE
DRILL ☒ DEEPEN ☐ PLUG BACK ☐

b. TYPE OF WELL

OIL WELL ☒

GAS WELL ☐

OTHER ☐

SINGLE ZONE ☐

MULTIPLE ZONE ☒

2. NAME OF OPERATOR

Siete Oil and Gas Corporation ✓

3. ADDRESS OF OPERATOR

P.O. Box 2523, Roswell, New Mexico 88201

4. LOCATION OF WELL (Report location clearly and in accordance with any State requirements.)*

At surface

1650' FNL & 990' FEL, SE/4 NE/4, Unit Letter H

At proposed prod. zone

14. DISTANCE IN MILES AND DIRECTION FROM NEAREST TOWN OR POST OFFICE*

14.75 miles Southeast of Loco Hills, NM

15. DISTANCE FROM PROPOSED*

LOCATION TO NEAREST
PROPERTY OR LEASE LINE, FT.
(Also to nearest drig. unit line, if any)

330'

18. DISTANCE FROM PROPOSED LOCATION*
TO NEAREST WELL, DRILLING, COMPLETED,
OR APPLIED FOR, ON THIS LEASE, FT.

660'

16. NO. OF ACRES IN LEASE

320

19. PROPOSED DEPTH

6500'

17. NO. OF ACRES ASSIGNED
TO THIS WELL

40

20. ROTARY OR CABLE TOOLS

Rotary

21. ELEVATIONS (Show whether DP, RT, GR, etc.)

3706' GR

22. APPROX. DATE WORK WILL START*

October 25, 1985

23.

PROPOSED CASING AND CEMENTING PROGRAM

SIZE OF HOLE	SIZE OF CASING	WEIGHT PER FOOT	SETTING DEPTH	QUANTITY OF CEMENT
12 1/4"	8 5/8"	24#	400'	400 sxs "C" Cement
7 7/8"	4 1/2"	10.5#	6500'	2200 sxs "C" Cement

Selectively perforate and treat pay zone.

Attachments: Survey Plat
Supplemental Drilling Data
Surface Use Plan

IN ABOVE SPACE DESCRIBE PROPOSED PROGRAM: If proposal is to deepen or plug back, give data on present productive zone and proposed new productive zone. If proposal is to drill or deepen directionally, give pertinent data on subsurface locations and measured and true vertical depths. Give blowout preventer program, if any.

24.

SIGNED

TITLE

President

DATE

October 21, 1985

(This space for Federal or State office use)

PERMIT NO.

APPROVAL DATE

APPROVED BY

TITLE

DATE

10-28-85

CONDITIONS OF APPROVAL, IF ANY:

APPROVAL SUBJECT TO
GENERAL REQUIREMENTS AND
SPECIAL STIPULATIONS

*See Instructions On Reverse Side

N MEXICO OIL CONSERVATION COMMISSION
WELL LOCATION AND ACREAGE DEDICATION PLAT

Form O-100
 Superseded 1-1-85
 Effective 1-1-85

All distances must be from the outer boundaries of the Section

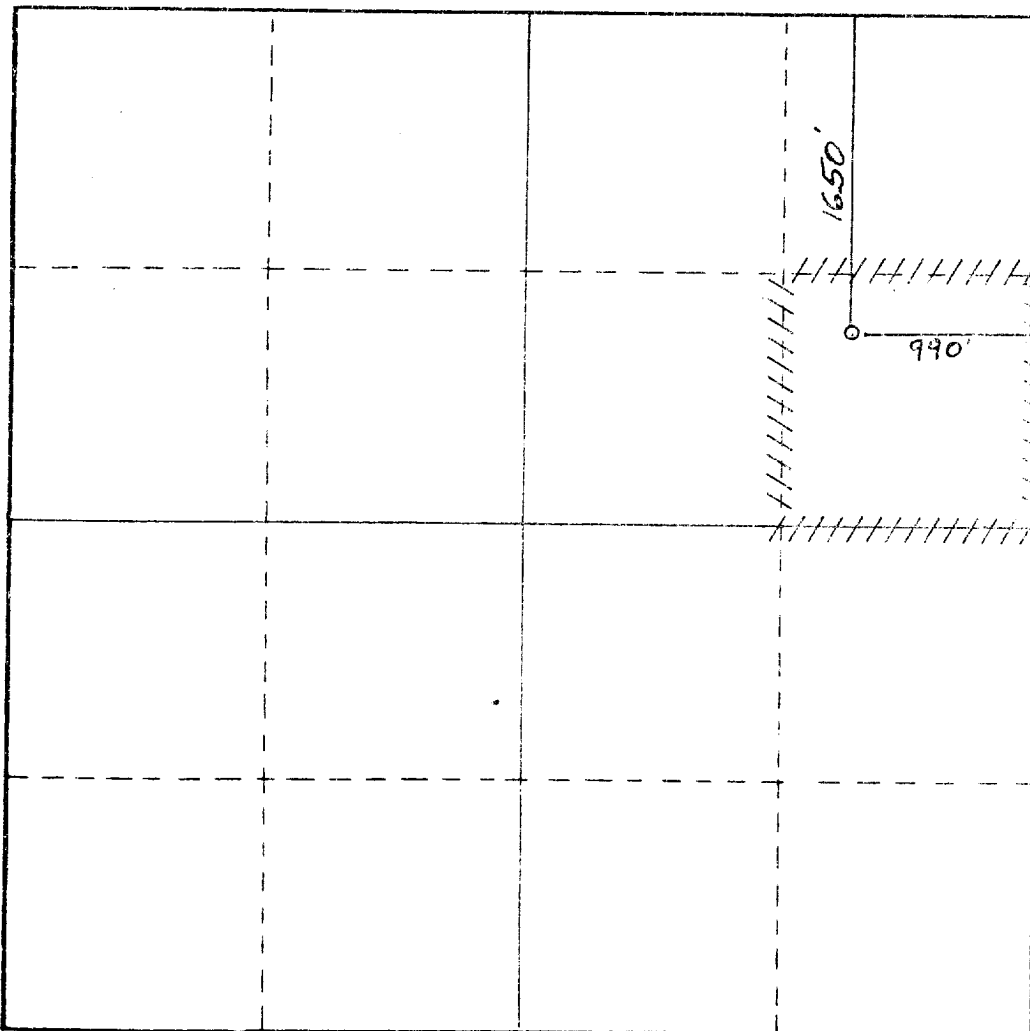
Operator SIETE OIL & GAS CORPORATION			Lease Geronimo Federal		Well No. 4
Tract Letter H	Section 24	Township 18 South	Range 31 East	County Eddy	
Actual Postage Location of Well: 1650 feet from the North line and 990 feet from the East line					
Ground Level Elev. 3706.	Producing Formation Delaware		Pool Shugart	Dedicated Acreage 40 Acres	

1. Outline the acreage dedicated to the subject well by colored pencil or hatchure marks on the plat below.
2. If more than one lease is dedicated to the well, outline each and identify the ownership thereof (both as to working interest and royalty).
3. If more than one lease of different ownership is dedicated to the well, have the interests of all owners been consolidated by communitization, unitization, force-pooling, etc?

☐ Yes ☐ No If answer is "yes," type of consolidation _____

If answer is "no," list the owners and tract descriptions which have actually been consolidated. (Use reverse side of this form if necessary.) _____

No allowable will be assigned to the well until all interests have been consolidated (by communitization, unitization, forced-pooling, or otherwise) or until a non-standard unit, eliminating such interests, has been approved by the Commission.



CERTIFICATION

I hereby certify that the information contained herein is true and complete to the best of my knowledge and belief.

Terry W. Franklin
 Name _____

Terry W. Franklin

Position _____

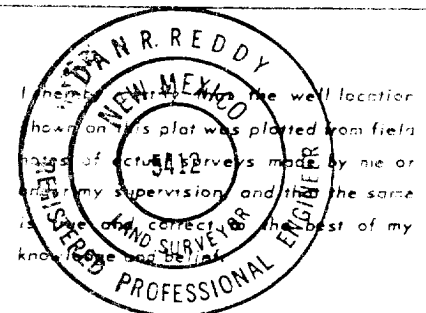
Agent

Company _____

Siete Oil & Gas Corp.

Date _____

10/21/85



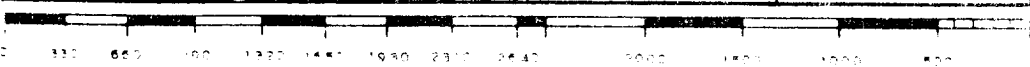
Date Surveyed _____

October 17, 1985

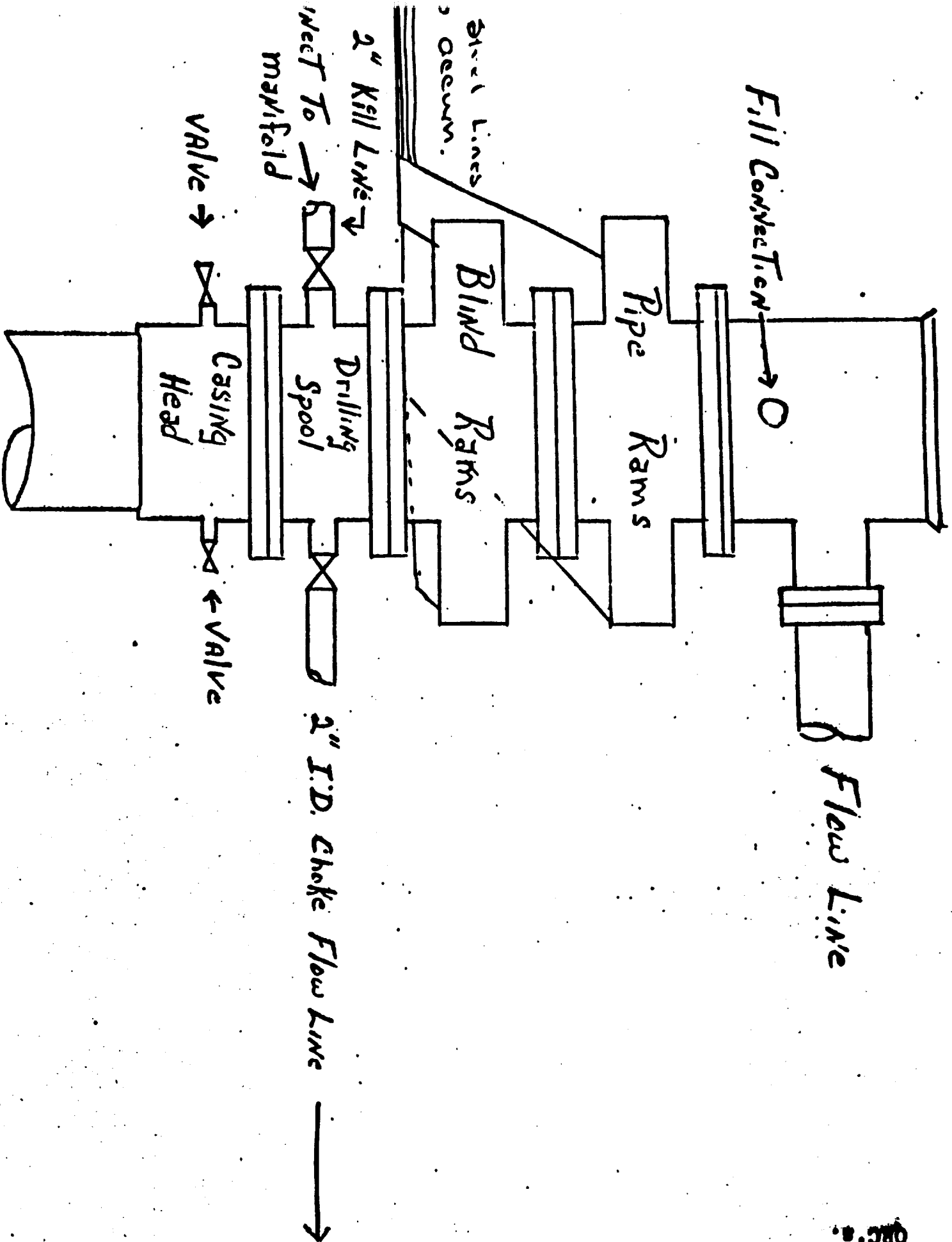
Registered Professional Engineer
 and a Land Surveyor

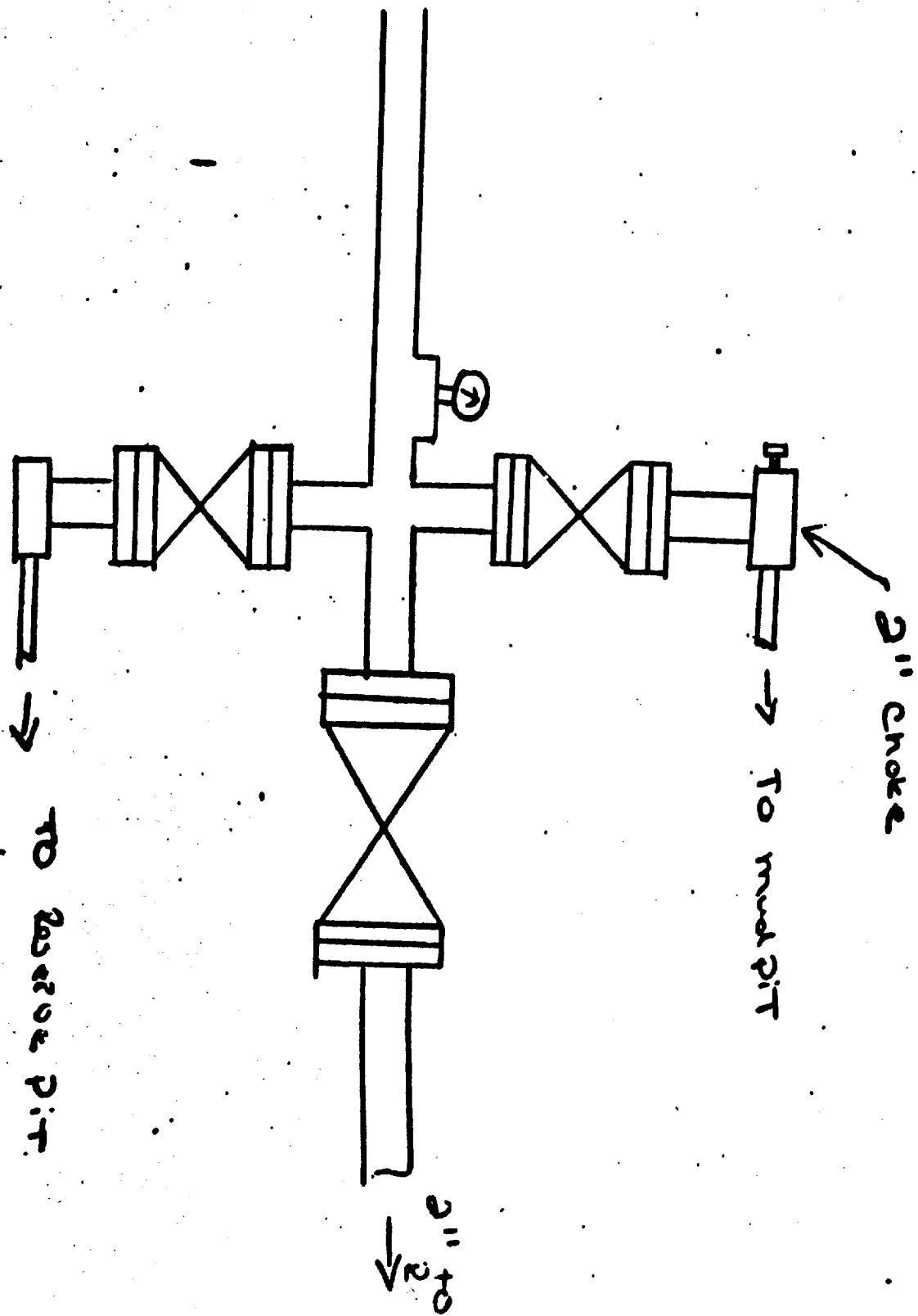
Dan R. Reddy
 Certificate No. _____

NM PE&LS NO. 5412



BOP Hooks for large casing.
 Pipe & Blind Rams are hydraulic
 operated, Cameron 10" 5000#
 QHC's.





Accumulator

Arithmetic
& Logical Functions

1st & 2nd Lines
P. 22 Rams & B. 1
Rams

SUPPLEMENTAL DRILLING DATA
SIETE OIL AND GAS CORPORATION
Geronimo Federal #4
1650' FNL & 990' FEL
Section 24: T-18-S, R-31-E
Eddy County, New Mexico
Lease Number - NM-025777

The following items supplement "Onshore Oil and Gas Order No. 1:

1. The geologic surface is quaternary.
2. The estimated geological marker tops:

Base Salt	2200'	Grayburg	3930'
Yates	2350'	Delaware	4560'
Queen	3510'	Bone Spring	6430'

3. Estimated depths to water, oil or gas:

Water: 220'

Oil or Gas: 4900' - 5300'

4. Proposed casing program:

<u>Size</u>	<u>Interval</u>	<u>Weight</u>	<u>Grade</u>	<u>Joint</u>	<u>New or Used</u>
8 5/8"	0 - 400'	24#	J-55	ST&C	New
4 1/2"	0 - 6500'	10.5#	J-55	ST&C	New

5. Pressure Control Equipment: The blowout preventer will be a double ram type preventer. A sketch is attached.

6. Mud Program:

0 - 400': Native mud adding gel and lime as needed for sufficient viscosity to insure clean hole to run casing.

400' - 6500': Native brine, add lime for pH @10 for corrosion protection. At 4200' add starch and salt gel to establish a viscosity of 32-38, weight 9.8 - 10.0#/gallon, water loss of 20 cc or less.

7. Auxiliary Equipment: A kelly cock will be installed on the rig floor while drilling operations are in progress.

8. Testing, Logging and Coring Programs: Possible drillstem tests and/or coring is planned through the Grayburg Zone.

Logging: Compensated Neutron - Formation Density - Gamma Ray - Caliper - Dual Laterolog - RXO

9. No abnormal pressures or temperature zones are anticipated.
10. Anticipated starting date: Commence drilling operations October 25, 1985.

CLAYTON 15-M

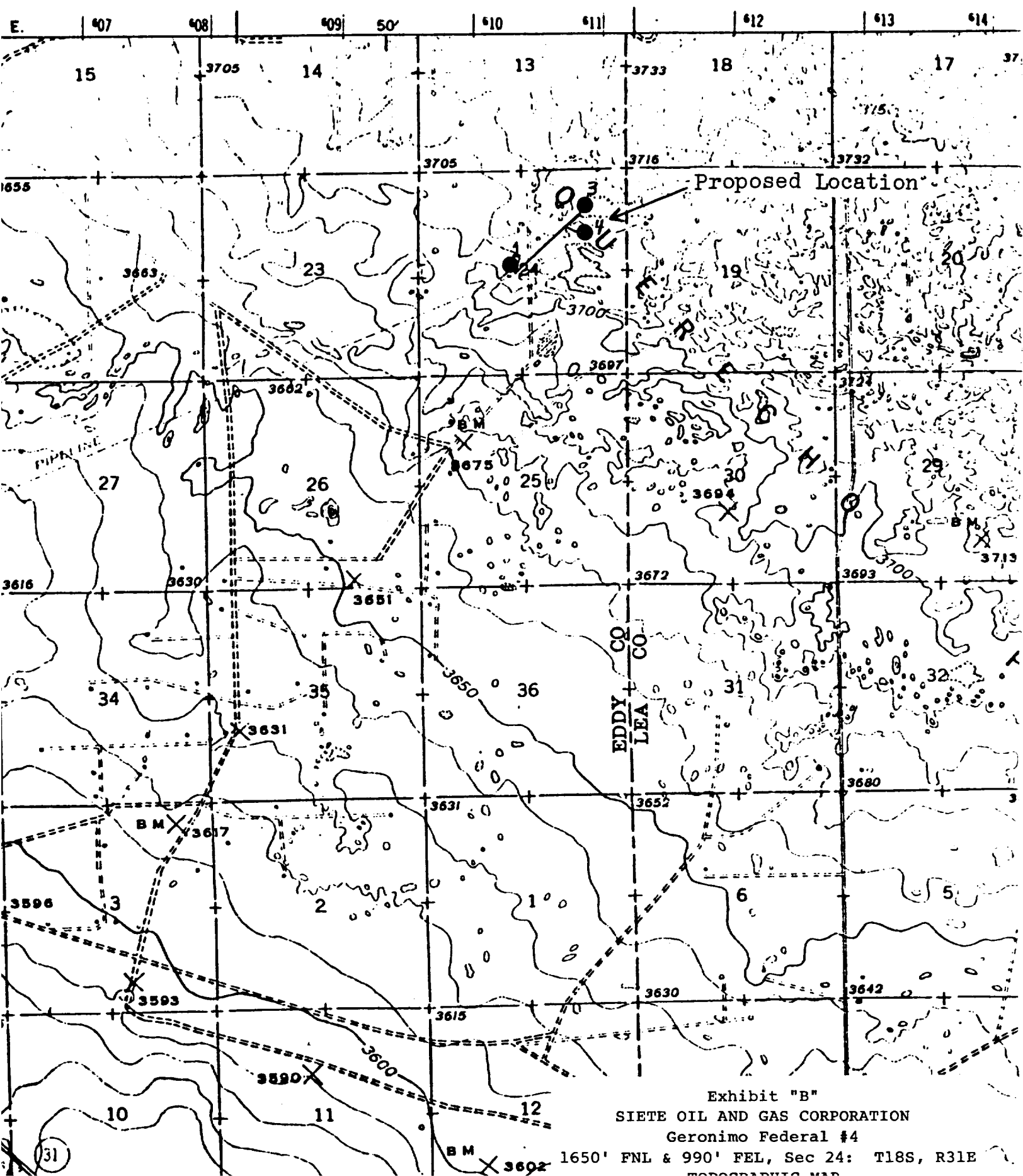


Exhibit "B"
SIETE OIL AND GAS CORPORATION
Geronimo Federal #4

1650' FNL & 990' FEL, Sec 24: T18S, R31E