

UNITED STATES  
DEPARTMENT OF THE INTERIOR  
BUREAU OF LAND MANAGEMENT

APPLICATION FOR PERMIT TO DRILL, DEEPEN, OR PLUG BACK

1a. TYPE OF WORK

DRILL ☒

DEEPEN ☐

PLUG BACK ☐

b. TYPE OF WELL

OIL  
WELL ☒

GAS  
WELL ☐

OTHER

SINGLE  
ZONE ☐

MULTIPLE  
ZONE ☐

2. NAME OF OPERATOR

Siete Oil & Gas Corporation

3. ADDRESS OF OPERATOR

P.O. Box 2523, Roswell, NM 88201

4. LOCATION OF WELL (Report location clearly and in accordance with any State requirements.)

At surface

790' FNL & 940' FEL, NE/4 NE/4, Unit Letter C.D.

At proposed prod. zone Same

14. DISTANCE IN MILES AND DIRECTION FROM NEAREST TOWN OR POST OFFICE\*

14.75 miles Southeast of Loco Hills, New Mexico

15. DISTANCE FROM PROPOSED\*

LOCATION TO NEAREST  
PROPERTY OR LEASE LINE, FT. 790'  
(Also to nearest drlg. unit line, if any)

18. DISTANCE FROM PROPOSED LOCATION\*

TO NEAREST WELL, DRILLING, COMPLETED,  
OR APPLIED FOR, ON THIS LEASE, FT. 100'

21. ELEVATIONS (Show whether DF, ET, GR, etc.)

3705' GR

23. PROPOSED CASING AND CEMENTING PROGRAM

SIZE OF HOLE	SIZE OF CASING	WEIGHT PER FOOT	SETTING DEPTH	QUANTITY OF CEMENT
12 1/4"	8 5/8"	24#, J-55	400'	400 sxs Class "C" Cement
7 7/8"	4 1/2"	10.5#, J-55	4500'	2200 sxs Class "C" Cement

Selectively perforate and treat pay zone

Attachments:

Survey Plat (C-102)  
Supplemental Drilling Data  
Surface Use Plan

IN ABOVE SPACE DESCRIBE PROPOSED PROGRAM: If proposal is to deepen or plug back, give data on present productive zone and proposed new productive zone. If proposal is to drill or deepen directionally, give pertinent data on subsurface locations and measured and true vertical depths. Give blowout preventer program, if any.

24.

SIGNED

TITLE

President

DATE

March 10, 1986

(This space for Federal or State office use)

PERMIT NO.

APPROVAL DATE

APPROVED BY

TITLE

DATE

3-19-86

CONDITIONS OF APPROVAL, IF ANY:

APPROVAL SUBJECT TO  
GENERAL REQUIREMENTS AND  
SPECIAL STIPULATIONS  
ATTACHED

\*See Instructions On Reverse Side

## OIL CONSERVATION DIVISION

STATE OF NEW MEXICO  
ENERGY AND MINERALS DEPARTMENTP. O. BOX 2084  
SANTA FE, NEW MEXICO 87501Form C-102  
Revised 10-1-73

All distances must be from the outer boundaries of the Section.

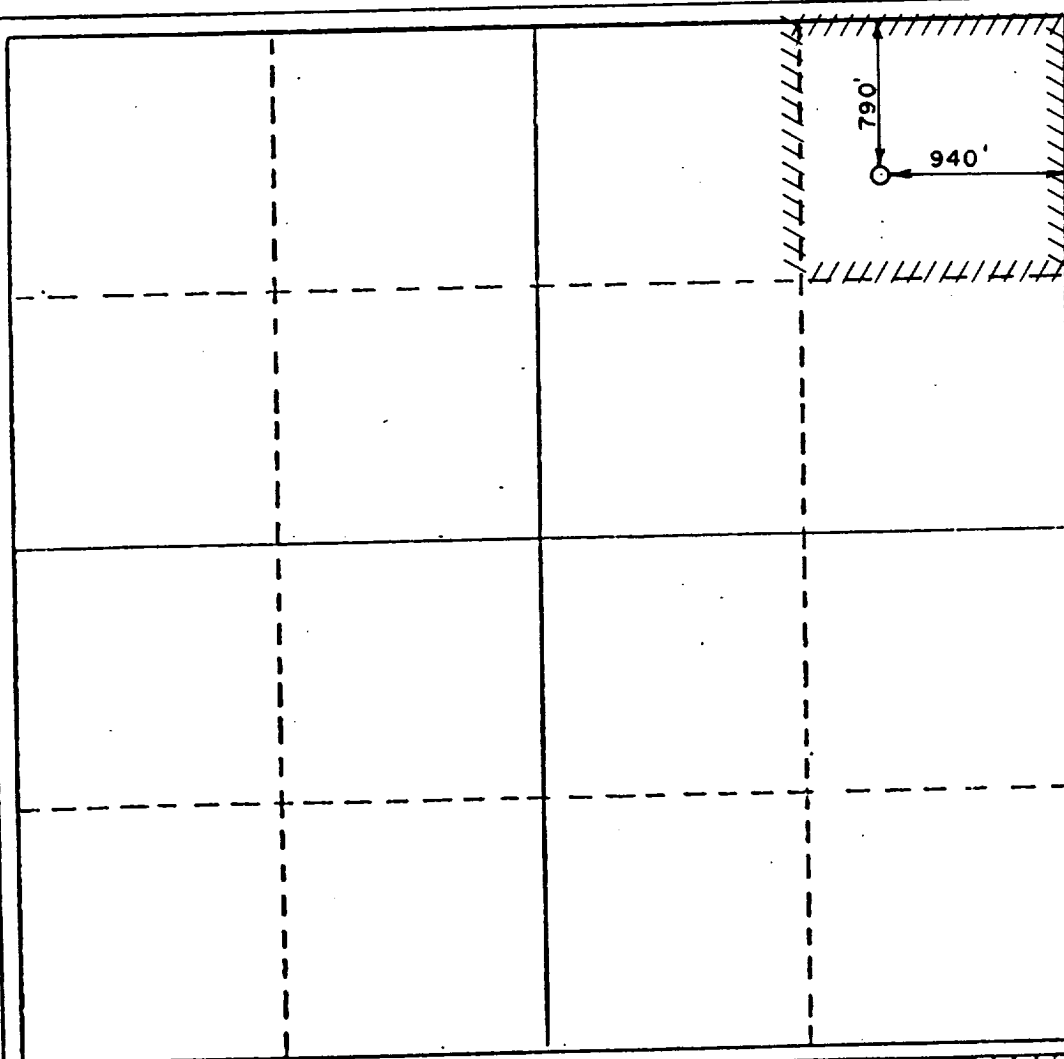
Operator <b>Siete Oil &amp; Gas Corporation</b>		Lease <b>Geronimo Federal</b>		Well No. <b>6</b>
Unit Letter <b>A</b>	Section <b>24</b>	Township <b>18 South</b>	Range <b>31 East</b>	County <b>Eddy</b>
Actual Well Location of Well: <b>940</b> feet from the <b>East</b> line and <b>790</b> feet from the <b>North</b> line				
Ground Level Elev. <b>3705</b>	Producing Formation	Pool <b>Shugart-Grayburg-San Andres</b>		Dedicated Acreage: <b>40</b> Acres

1. Outline the acreage dedicated to the subject well by colored pencil or hatchure marks on the plat below.
2. If more than one lease is dedicated to the well, outline each and identify the ownership thereof (both as to working interest and royalty).
3. If more than one lease of different ownership is dedicated to the well, have the interests of all owners been consolidated by communitization, unitization, force-pooling, etc?

☐ Yes ☐ No If answer is "yes," type of consolidation \_\_\_\_\_

If answer is "no," list the owners and tract descriptions which have actually been consolidated. (Use reverse side of this form if necessary.) \_\_\_\_\_

No allowable will be assigned to the well until all interests have been consolidated (by communitization, unitization, forced-pooling, or otherwise) or until a non-standard unit, eliminating such interests, has been approved by the Division.



## CERTIFICATION

I hereby certify that the information contained herein is true and complete to the best of my knowledge and belief.

Name *Sunny Longo*  
Position  
Vice President  
Company  
Siete Oil and Gas Corporation  
Date  
3/07/86

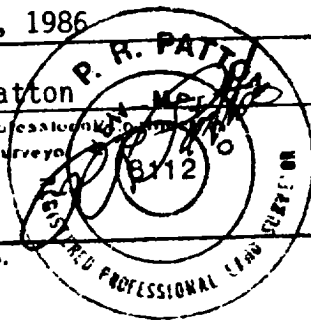
I hereby certify that the well location shown on this plat was plotted from field notes of actual surveys made by me or under my supervision, and that the same is true and correct to the best of my knowledge and belief.

March 7, 1986

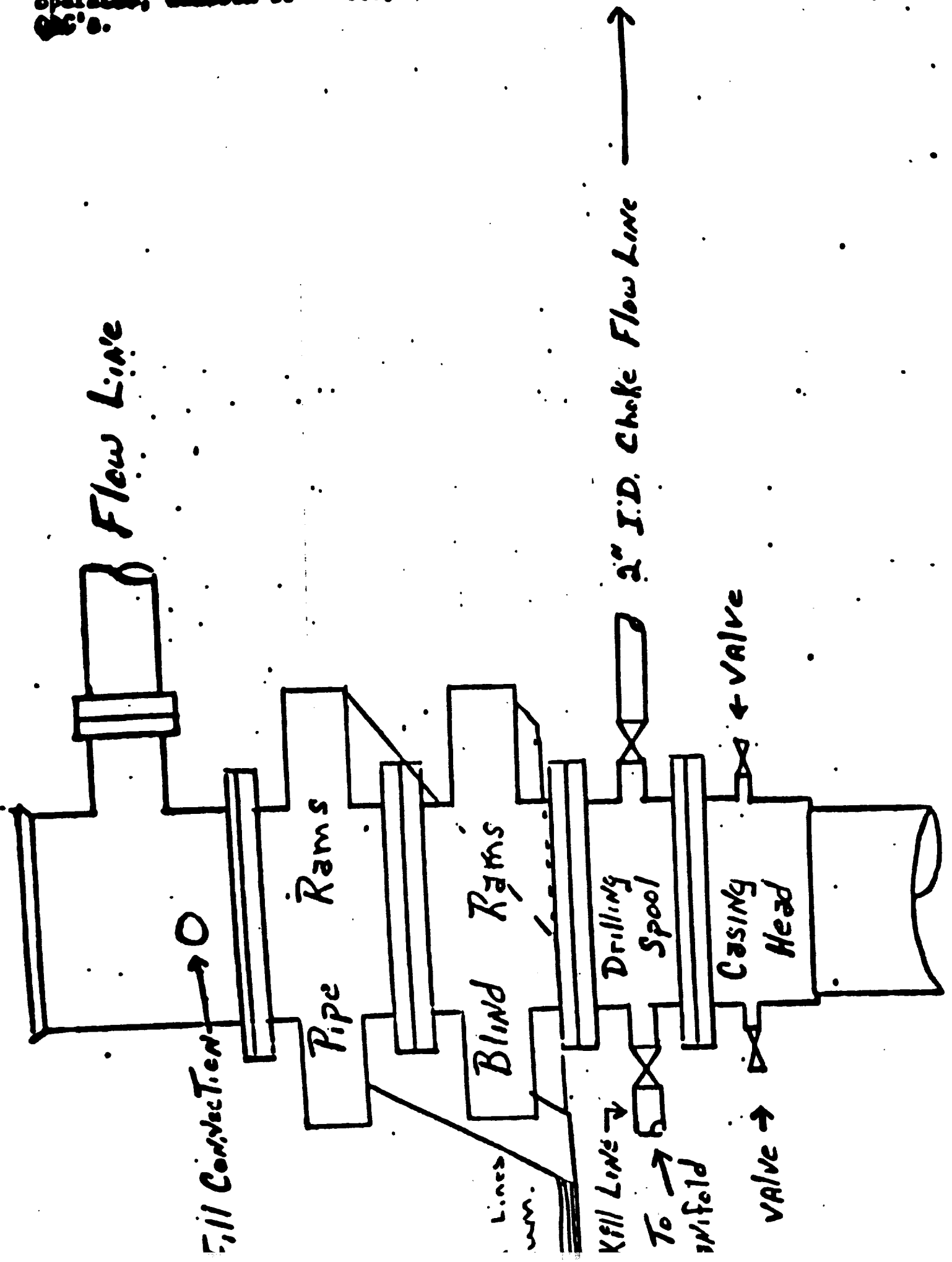
Date Surveyed  
P. R. Patton  
Registered Professional Surveyor  
and/or Land Surveyor

8112

Certificate No.



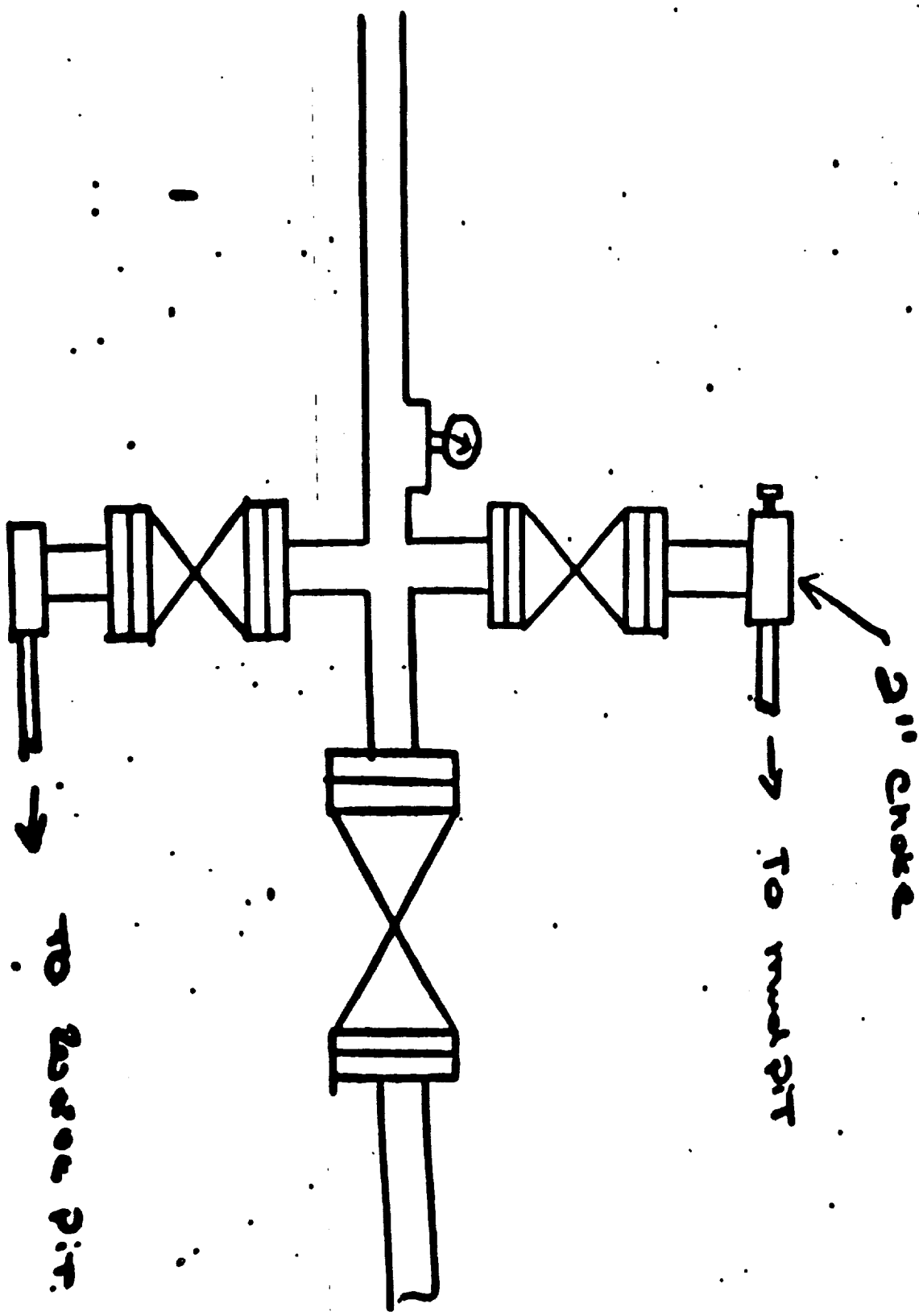
Pipe & Blind Rams are : ~~used~~  
operated, Cameron 10" 8000/  
Q.C's.



1st & 2nd  
Pins  
Rams

Accumulator

Oil  
oil. pressure



SUPPLEMENTAL DRILLING DATA  
SIETE OIL AND GAS CORPORATION  
GERONIMO FEDERAL NO. 6  
790' FNL & 940' FEL  
Section 24: T18S, R31E  
Eddy County, New Mexico  
Lease Number - NM-025777

The following items supplement "Onshore Oil and Gas Order No. 1:

1. The geologic surface is quaternary.
2. The estimated geological markers are as follows:

Yates	2352'
Seven Rivers	2534'
Queen	3508'
Grayburg	4048'
San Andres	4415'

3. Estimated depths to water, oil or gas:

Water: 220'

Oil or Gas: 3910' - 4070'

4. Proposed casing program:

<u>Size</u>	<u>Interval</u>	<u>Weight</u>	<u>Grade</u>	<u>Joint</u>	<u>New or Used</u>
8 5/8"	0 - 400'	24#	J-55	ST&C	New
4 1/2"	0 - 4500'	10.5#	J-55	ST&C	New

5. Pressure Control Equipment: The blowout preventer will be a double ram type preventer. A sketch is attached.

6. Mud Program:

0 - 400': Native mud adding gel and lime as needed for sufficient viscosity to clean hole and to run casing.

400' - 4500': Native mud becoming bine at 4200'. Mud up adding starch and salt gel for 32-38 viscosity, weight of 9.8 - 10.0#/gallon, water loss of 20 cc or less.

7. Auxiliary Equipment: Master valve on blowout preventer.

8. Testing, Logging and Coring Programs: Possible drill stem tests and/or coring is planned through the Grayburg Zone.

Logging: Compensated Neutron - Formation Density - Gamma Ray - Caliper  
- Dual Laterolog - RXO

9. No abnormal pressures or temperature zones are anticipated.

10. Anticipated starting date: Commence drilling operations April 10, 1986.

NEW MEXICO  
CLAYTON BASIN QUADRANGLE  
15-MINUTE SERIES

3249' (BUCKEYE)

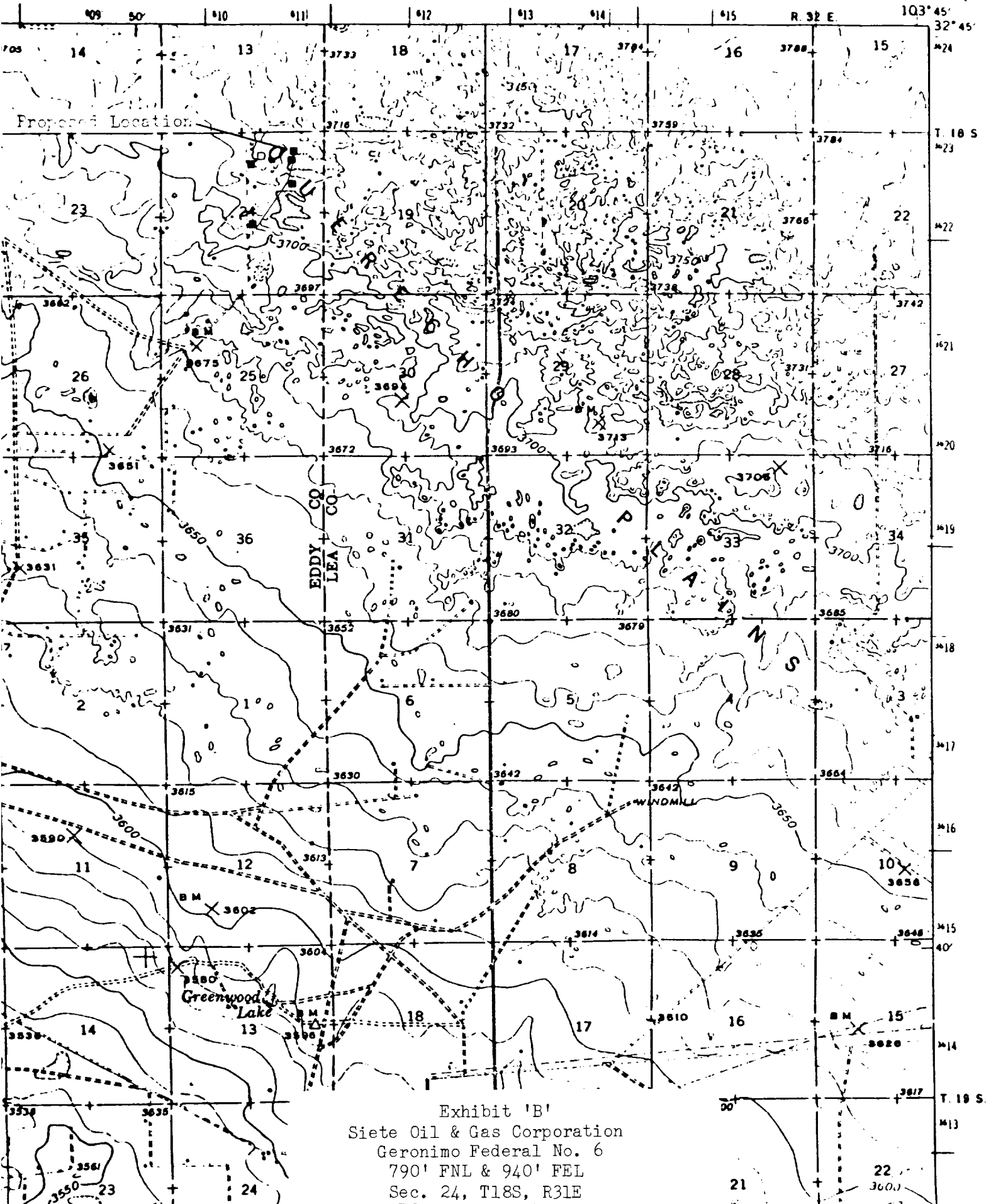
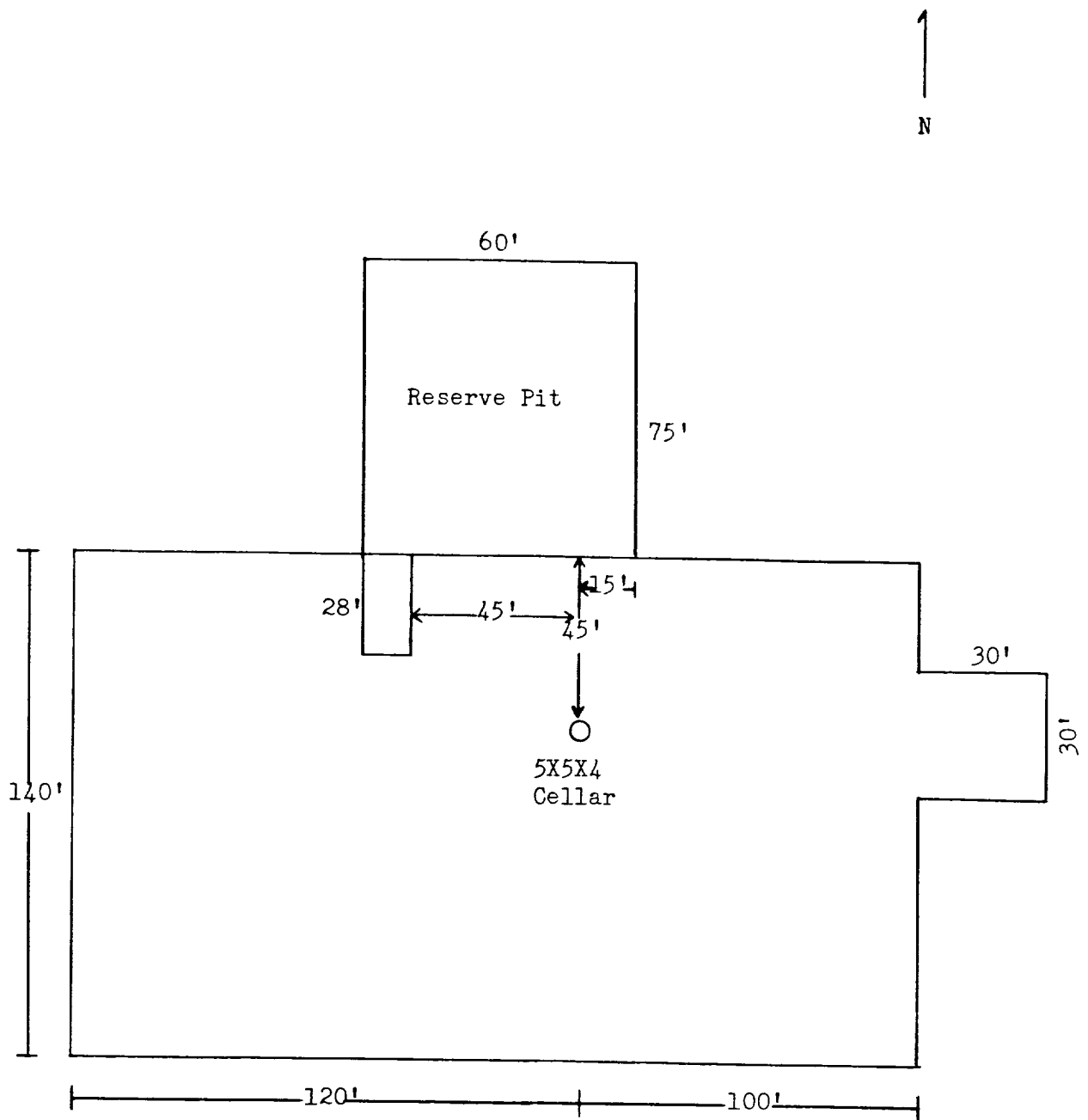


Exhibit 'B'  
Siete Oil & Gas Corporation  
Geronimo Federal No. 6  
790' FNL & 940' FEL  
Sec. 24, T18S, R31E



I&M Drilling Rig No. 1

Note: Pits to the West V-door to the North

Exhibit 'D'  
 Siete Oil & Gas Corporation  
 Geronimo Federal No. 6  
 790' FNL & 940' FEL  
 Sec. 24, T18S, R31E  
 Eddy County, N.M.