

**DEPARTMENT OF THE INTERIOR  
BUREAU OF LAND MANAGEMENT**

**APPLICATION FOR PERMIT TO DRILL, DEEPEN, OR PLUG BACK**

1a. TYPE OF WORK

DRILL ☒

DEEPEN ☐

PLUG BACK ☐

b. TYPE OF WELL

OIL  
WELL ☒

GAS  
WELL ☐

OTHER ☐

2. NAME OF OPERATOR

Siete Oil & Gas Corporation ✓

3. ADDRESS OF OPERATOR

P.O. Box 2523, Roswell, New Mexico 88201 **C.D.**

4. LOCATION OF WELL (Report location clearly and in accordance with any State requirements\*)

At surface

1750' FNL & 990' FEL, SE/4 NE/4, Unit letter H

At proposed prod. zone same

14. DISTANCE IN MILES AND DIRECTION FROM NEAREST TOWN OR POST OFFICE\*

14.75 miles Southeast Loco Hills, NM

15. DISTANCE FROM PROPOSED\*

LOCATION TO NEAREST  
PROPERTY OR LEASE LINE, FT.  
(Also to nearest drlg. unit line, if any)

430'

13. NO. OF ACRES IN LEASE

320

17. NO. OF ACRES ASSIGNED  
TO THIS WELL

40

18. DISTANCE FROM PROPOSED LOCATION\*

TO NEAREST WELL, DRILLING, COMPLETED,  
OR APPLIED FOR, ON THIS LEASE, FT.

100'

19. PROPOSED DEPTH

4500'

20. ROTARY OR CABLE TOOLS

Rotary

21. ELEVATIONS (Show whether DF, RT, GR, etc.)

3706" GR

22. APPROX. DATE WORK WILL START\*

April 20, 1986

23. PROPOSED CASING AND CEMENTING PROGRAM

SIZE OF HOLE	SIZE OF CASING	WEIGHT PER FOOT	SETTING DEPTH	QUANTITY OF CEMENT
12 1/4"	8 5/8"	24#	400'	400 sxs "C" Cement
7 7/8"	4 1/2"	10.5#	4500'	2200 sxs "C" Cement

Selectively perforated and treat pay zone.

Attachments: Survey Plat  
Supplemental Drilling Data  
Surface Use Plan

IN ABOVE SPACE DESCRIBE PROPOSED PROGRAM: If proposal is to deepen or plug back, give data on present productive zone and proposed new productive zone. If proposal is to drill or deepen directionally, give pertinent data on subsurface locations and measured and true vertical depths. Give blowout preventer program, if any.

24.

SIGNED

President

DATE March 07, 1986

(This space for Federal or State office use)

PERMIT NO.

APPROVAL DATE

APPROVED BY

Area Manager

TITLE

DATE

3-19-86

CONDITIONS OF APPROVAL, IF ANY:

**APPROVAL SUBJECT TO  
GENERAL REQUIREMENTS AND  
SPECIAL STIPULATIONS**

**\*See Instructions On Reverse Side**

STATE OF NEW MEXICO  
ENERGY AND MINERALS DEPARTMENT

OIL CONSERVATION DIVISION  
P. O. BOX 2084  
SANTA FE, NEW MEXICO 87501

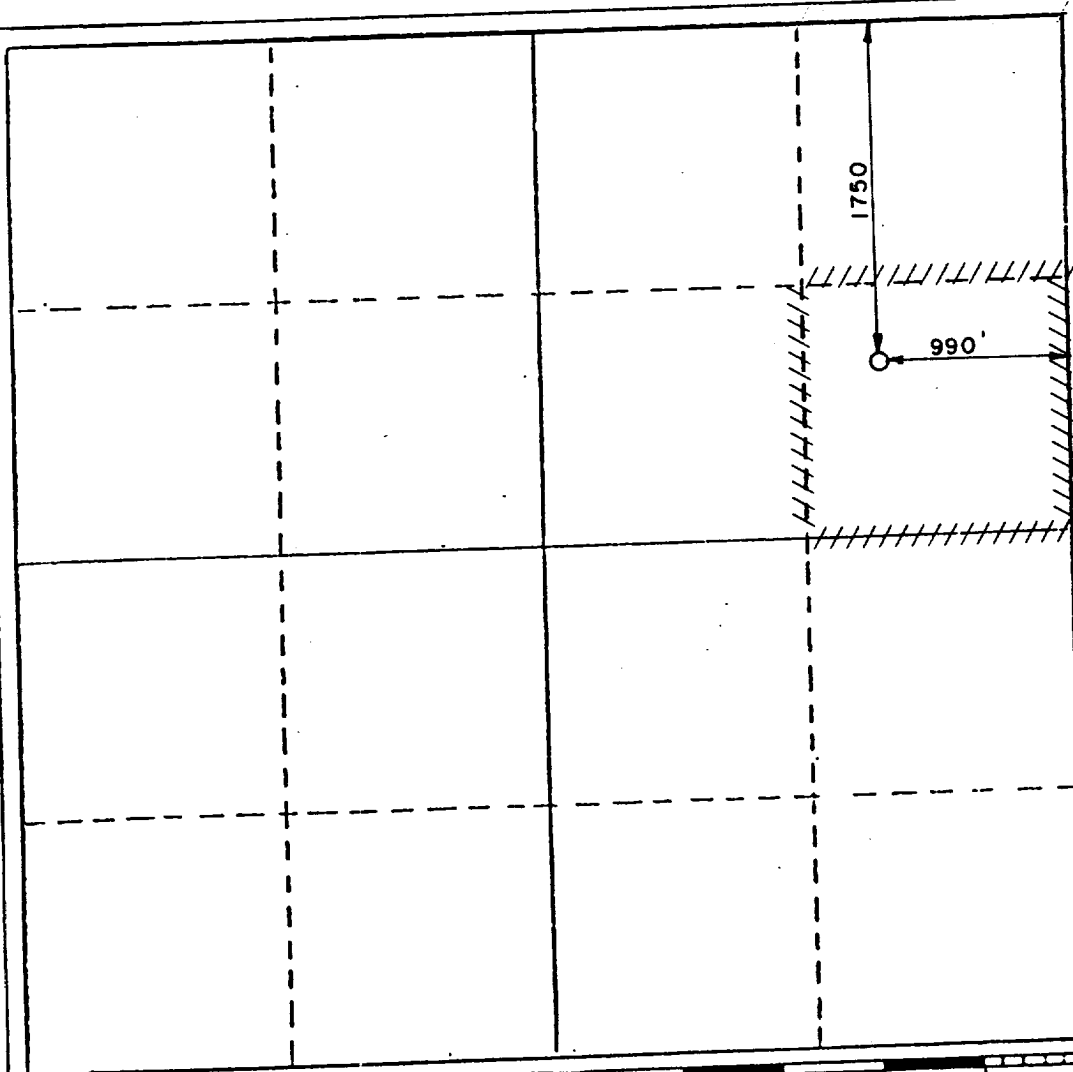
Form C-102  
Revised 10-1-79

All distances must be from the outer boundaries of the Section.

Operator <b>Siete Oil &amp; Gas Corporation</b>			Lease <b>Geronimo Federal</b>		Well No. <b>7</b>
Unit Letter <b>H</b>	Section <b>24</b>	Township <b>18 South</b>	Range <b>31 East</b>	County <b>Eddy</b>	
Actual Well Location of Well: <b>1750</b> feet from the <b>North</b> line and <b>990</b> feet from the <b>East</b> line					
Ground Level Elev. <b>3706</b>	Producing Formation		Pool <b>Shugart-Grayburg San Andres</b>	Dedicated Acreage: <b>40</b> Acres	

1. Outline the acreage dedicated to the subject well by colored pencil or hatchure marks on the plat below.
2. If more than one lease is dedicated to the well, outline each and identify the ownership thereof (both as to working interest and royalty).
3. If more than one lease of different ownership is dedicated to the well, have the interests of all owners been consolidated by communitization, unitization, force-pooling, etc?

☐ Yes ☐ No If answer is "yes," type of consolidation \_\_\_\_\_  
If answer is "no," list the owners and tract descriptions which have actually been consolidated. (Use reverse side of this form if necessary.) \_\_\_\_\_  
No allowable will be assigned to the well until all interests have been consolidated (by communitization, unitization, forced-pooling, or otherwise) or until a non-standard unit, eliminating such interests, has been approved by the Division.



CERTIFICATION

I hereby certify that the information contained herein is true and complete to the best of my knowledge and belief.

Name

Position

Vice President

Company

Siete Oil and Gas Corporation

Date

3/07/86

I hereby certify that the well location shown on this plat was plotted from field notes of actual surveys made by me or under my supervision, and that the same is true and correct to the best of my knowledge and belief.

March 7, 1986

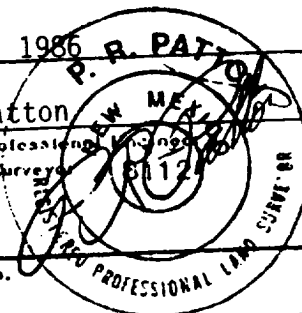
Date Surveyed

P. R. Patton

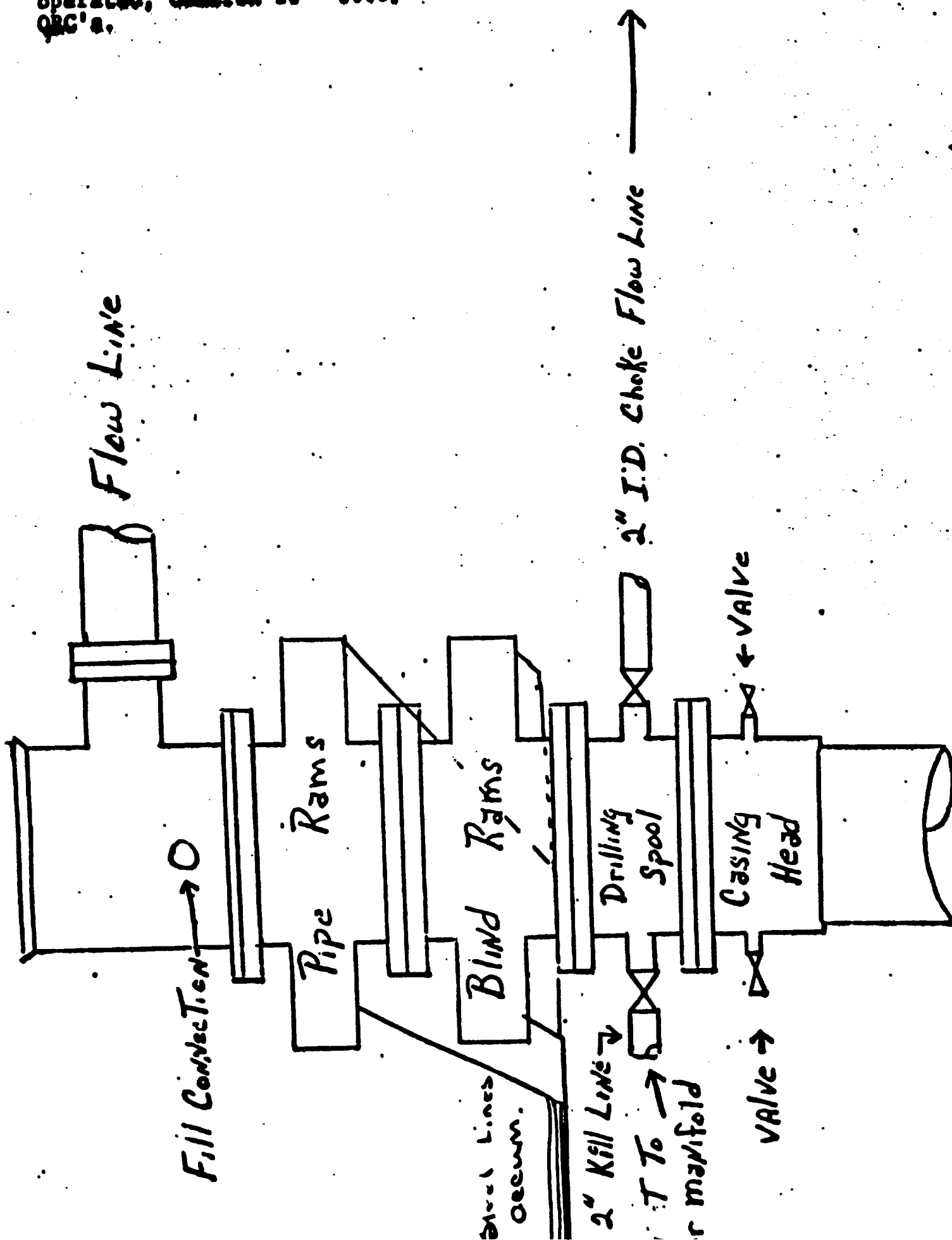
Registered Professional Engineer and/or Land Surveyor

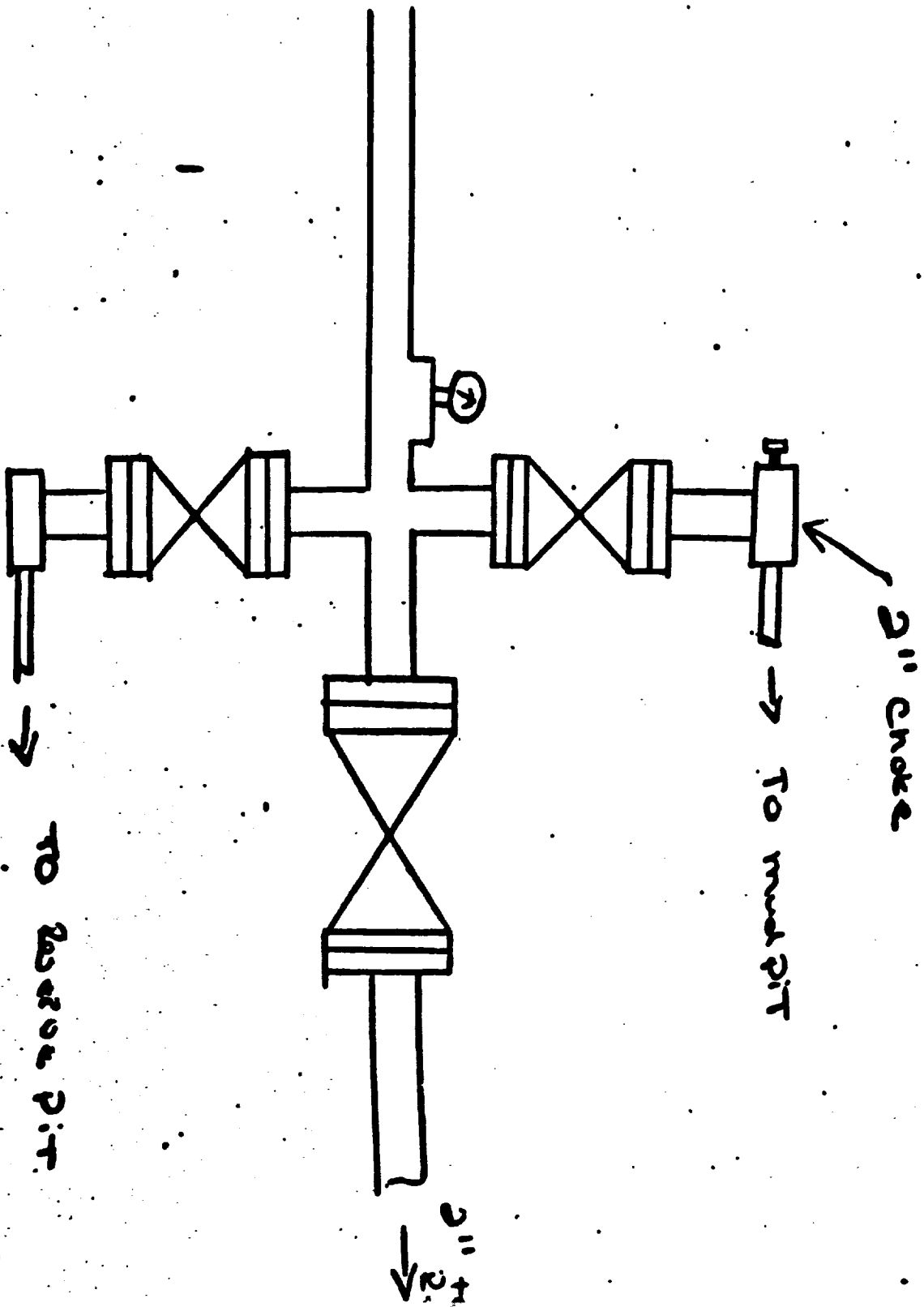
8112

Certificate No.



**BOP Hookups for large casing.  
Pipe & Blind Rams are hydraulic  
operated, Cameron 10" 5000#  
Q&C's.**





Accumulator

are operated,  
by gal. reservoir

148441 lines  
Pipe Rams 4 B1  
Rams

**SUPPLEMENTAL DRILLING DATA**  
**SIETE OIL AND GAS CORPORATION**  
**GERONIMO FEDERAL NO. 7**  
**1750' FNL & 990' FEL**  
**Section 24: T18S, R31E**  
**Eddy County, New Mexico**  
**Lease Number - NM-025777**

The following items supplement "Onshore Oil and Gas Order No. 1:

1. The geologic surface is quaternary.

2. The estimated geological marker tops:

Yates	2396'	Grayburg	4018'
Queen	3505'	San Andres	4420'

3. Estimated depths to water, oil or gas:

Water: 220'

Oil or Gas: 4018' - 4400'

4. Proposed casing program:

<u>Size</u>	<u>Interval</u>	<u>Weight</u>	<u>Grade</u>	<u>Joint</u>	<u>New or Used</u>
8 5/8"	0 - 400'	24#	J-55	ST&C	New
4 1/2"	0 - 4500'	10.5#	J-55	ST&C	New

5. Pressure Control Equipment: The blowout preventer will be a double ram type preventer. A sketch is attached.

6. Mud Program:

0 - 400': Native mud adding gel and lime as needed for sufficient viscosity to insure clean hole to run casing.

400' - 4500': Native brine, add lime for ph @10 for corrosion protection. At 4200' add starch and salt gel to establish a viscosity of 32-38, weight 9.8 - 10.0#/gallon, water loss of 20 cc or less.

7. Auxiliary Equipment: A kelly cock will be installed on the rig floor while drilling operations are in progress.

8. Testing, Logging and Coring Programs: Possible drill stem tests and/or coring is planned through the Grayburg Zone.

Logging: Compensated Neutron - Formation Density - Gamma Ray - Caliper - Dual Laterolog - RXO

9. No abnormal pressures or temperature zones are anticipated.

10. Anticipated starting date: Commence drilling operations April 20, 1986.

EW MEXICO  
CLAYTON BASIN QUADRANGLE  
15-MINUTE SERIES

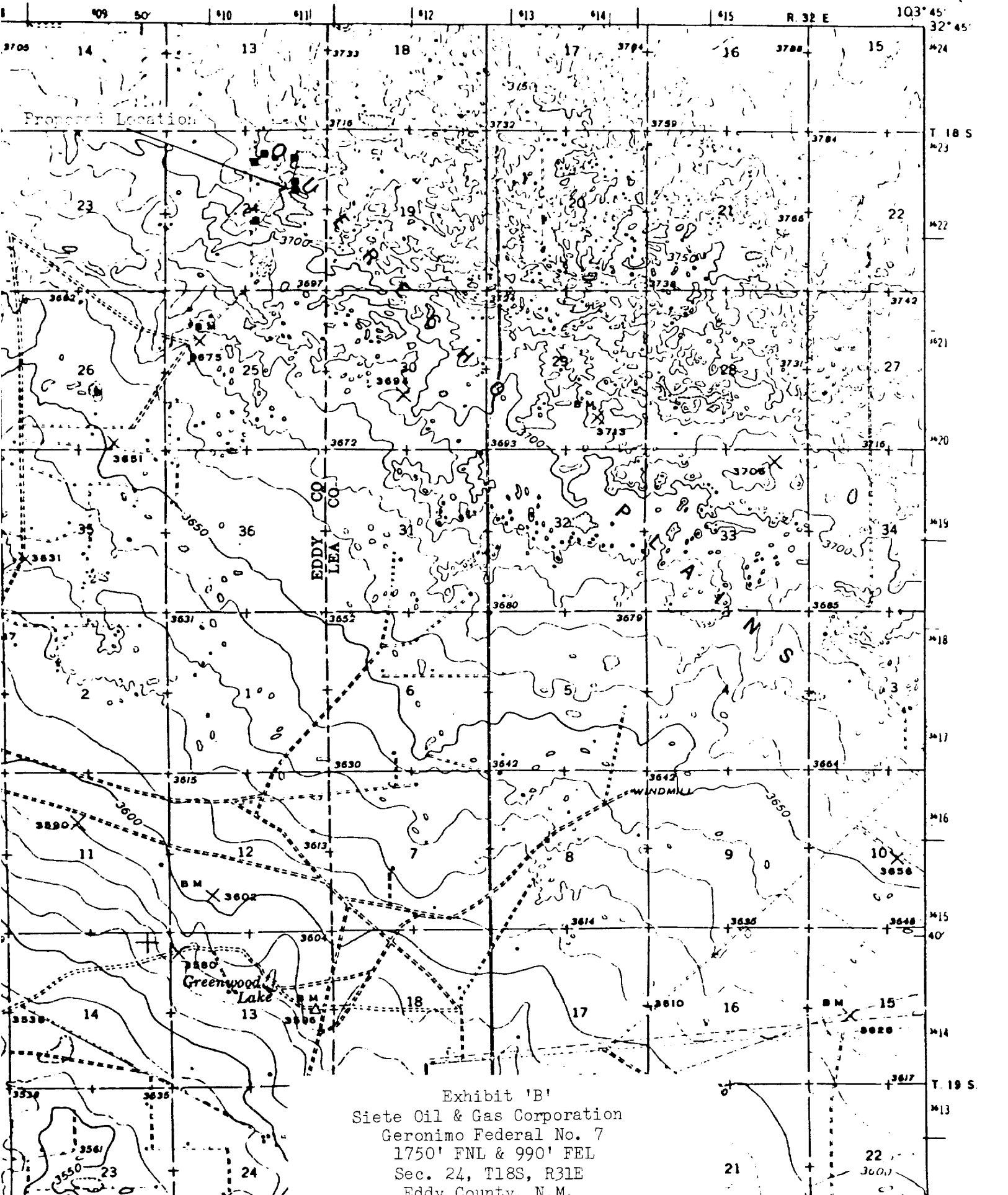
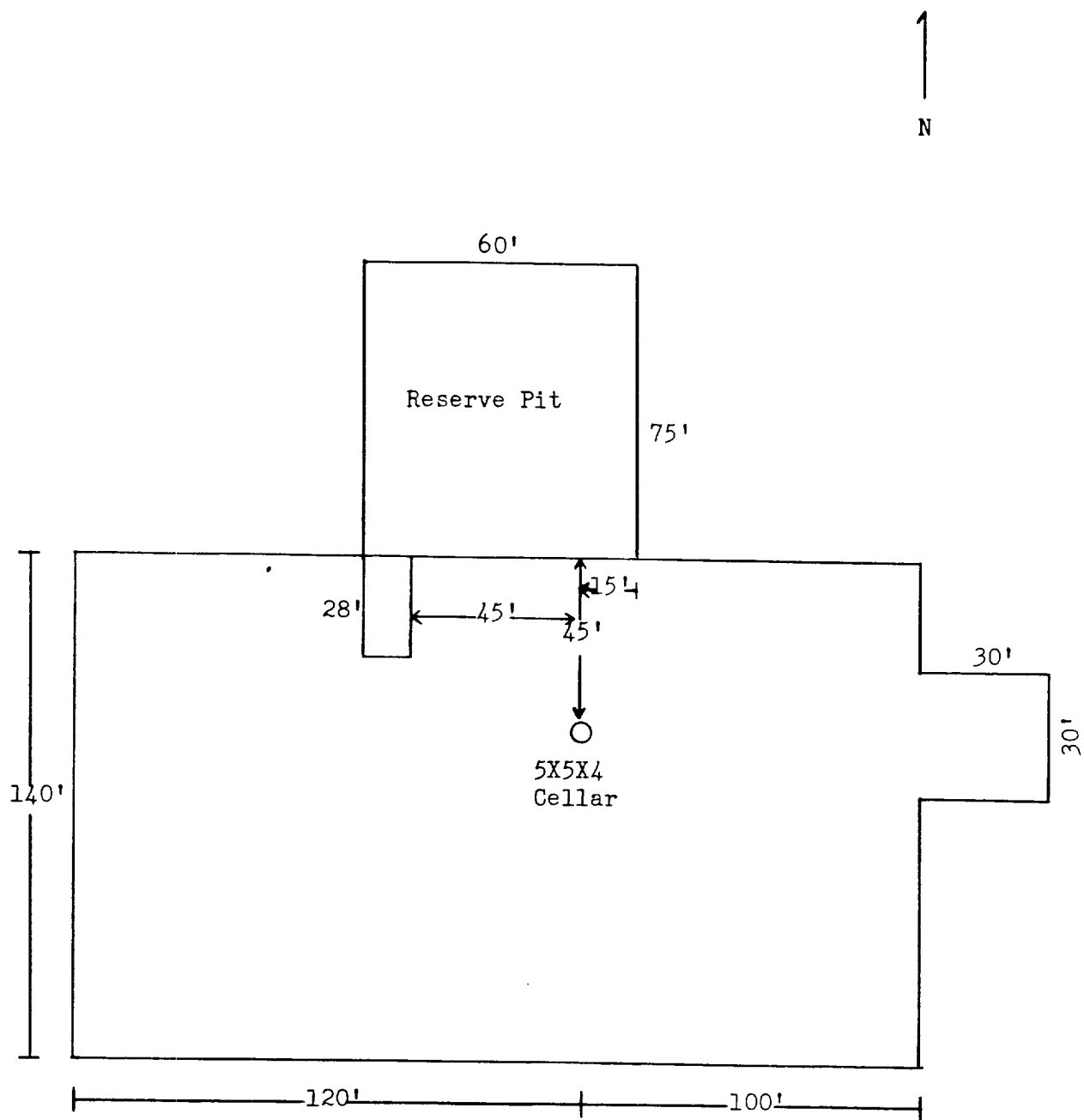


Exhibit 'B'  
Siete Oil & Gas Corporation  
Geronimo Federal No. 7  
1750' FNL & 990' FEL  
Sec. 24, T18S, R31E  
Eddy County, N.M.



I&M Drilling Rig No. 1

Note: Pits to the East V-door to the South

Exhibit 'D'  
 Siete Oil & Gas Corporation  
 Geronimo Federal No. 7  
 1750' FNL & 990' FEL  
 Sec. 24, T18S, R31E  
 Eddy County, N.M.