

**MEXICO OIL CONSERVATION COMMISSION
WELL LOCATION AND ACREAGE DEDICATION PLAT**

Form O-107
Supersedes O-128
Effective 1-1-65

All distances must be from the outer boundaries of the Section

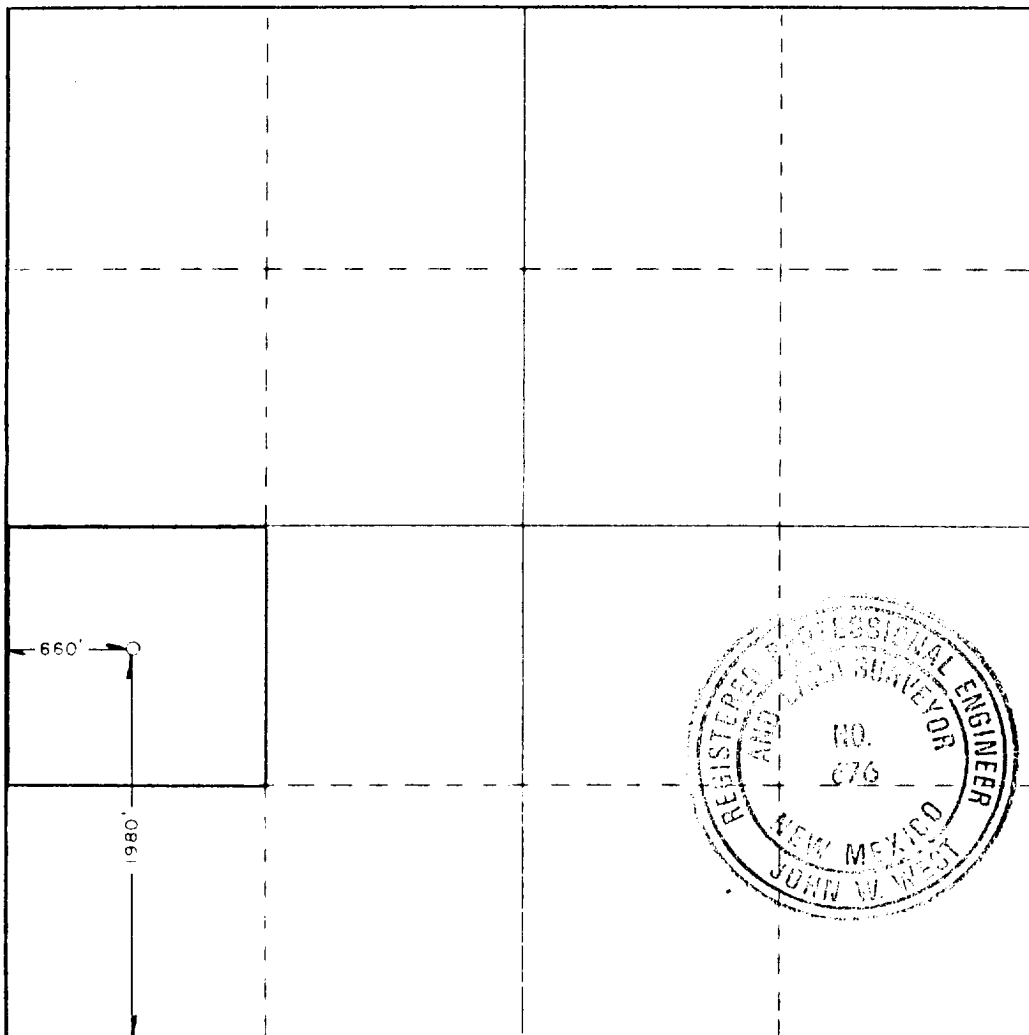
MorOilCo			Hamon State		Acres
Section 1	Section 5	Township 19 South	Range 29 East	County Eddy	
Location of Well					
1980 feet from the South line and		660 feet from the West line			
Surface Elev 3394.2'	Producing Formation Bone Springs		Pool Wildcat Bone Springs	Dedicated Acreage 40	

1. Outline the acreage dedicated to the subject well by colored pencil or hatchure marks on the plat below.
2. If more than one lease is dedicated to the well, outline each and identify the ownership thereof (both as to working interest and royalty).
3. If more than one lease of different ownership is dedicated to the well, have the interests of all owners been consolidated by communitization, unitization, force-pooling, etc?

☐ Yes ☐ No If answer is "yes," type of consolidation _____

If answer is "no," list the owners and tract descriptions which have actually been consolidated (Use reverse side of this form if necessary.) _____

No allowable will be assigned to the well until all interests have been consolidated (by communitization, unitization, forced-pooling, or otherwise) or until a non-standard unit, eliminating such interests, has been approved by the Commission.



CERTIFICATION

I hereby certify that the information contained herein is true and complete to the best of my knowledge and belief

Frank S. Morgan

Frank S. Morgan

Operator

MorOilCo, Inc.

March 20, 1986

I hereby certify that the well location shown on this plat was plotted from field notes of actual surveys made by me or under my supervision, and that the same is true and correct to the best of my knowledge and belief

Date Surveyed
February 13, 1986

Registered Professional Engineer and Land Surveyor

Ronald J. Eidson
Certificate No. JOHN W. WEST 676
RONALD J. EIDSON, 3219