

NM OIL CONS. COMMISSION
Drawer DD
88210

UNITED STATES
DEPARTMENT OF THE INTERIOR
BUREAU OF LAND MANAGEMENT

Form approved.
Budget Bureau No. 1004-0136
Expires August 31, 1985

APPLICATION FOR PERMIT TO DRILL, DEEPEN, OR PLUG BACK

1a. TYPE OF WORK

DRILL ☒

DEEPEN ☐

PLUG BACK ☐

b. TYPE OF WELL

OIL WELL ☒

GAS WELL ☐

OTHER

SINGLE ZONE ☒

MULTIPLE ZONE ☒

2. NAME OF OPERATOR

Siete Oil & Gas Corporation

3. ADDRESS OF OPERATOR

P. O. Box 2523, Roswell, NM 88201

4. LOCATION OF WELL (Report location clearly and in accordance with any State requirements.)

At surface

990' FSL & 990' FWL, SW/4 SW/4, Unit Letter M

At proposed prod. zone

Same

14. DISTANCE IN MILES AND DIRECTION FROM NEAREST TOWN OR POST OFFICE*

14.50 miles Southeast of Loco Hills, NM

15. DISTANCE FROM PROPOSED*

LOCATION TO NEAREST

PROPERTY OR LEASE LINE, FT.

(Also to nearest drlg. unit line, if any)

330'

18. DISTANCE FROM PROPOSED LOCATION*

TO NEAREST WELL, DRILLING, COMPLETED,

OR APPLIED FOR, ON THIS LEASE, FT.

1050'

21. ELEVATIONS (Show whether DF, ET, GR, etc.)

3694' GR

23. PROPOSED CASING AND CEMENTING PROGRAM

SIZE OF HOLE	SIZE OF CASING	WEIGHT PER FOOT	SETTING DEPTH	QUANTITY OF CEMENT
12 1/4"	8 5/8"	24.0#	400'	400 sxs (circulate)
7 7/8"	5 1/2"	15.5#	4500'	2200 sxs (circulate)

Selectively perforate and treat pay zones.

Attachments:

Survey Plat (C-102)
Supplemental Drilling Data
Surface Use Plan

IN ABOVE SPACE DESCRIBE PROPOSED PROGRAM: If proposal is to deepen or plug back, give data on present productive zone and proposed new productive zone. If proposal is to drill or deepen directionally, give pertinent data on subsurface locations and measured and true vertical depths. Give blowout preventer program, if any.

24.

SIGNED

Jimmy Longo

TITLE Vice President

DATE 5/27/86

(This space for Federal or State office use)

PERMIT NO.

Orig: Sgd. Charles E. S. 10/1/86

APPROVAL DATE

APPROVED BY

TITLE

DATE

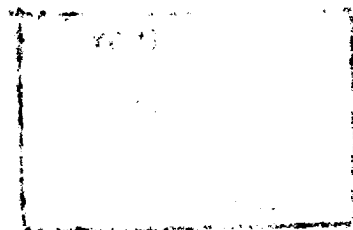
6-3-86

CONDITIONS OF APPROVAL, IF ANY:

APPROVAL SUBJECT TO
GENERAL REQUIREMENTS AND
SPECIAL STIPULATIONS

*See Instructions On Reverse Side

Title 18 U.S.C. Section 1001, makes it a crime for any person knowingly and willfully to make to any department or agency of the United States any false, fictitious or fraudulent statements or representations as to any matter within its jurisdiction.



RECEIVED
JUN 5 1986
O.C.N.
HOBBS OFFICE

NEW MEXICO OIL CONSERVATION COMMISSION
WELL LOCATION AND ACREAGE DEDICATION PLAT

MAY 20 1986

Form C-102
Supersedes C-128
Effective 1-1-81

All distances must be from the outer boundaries of the Section

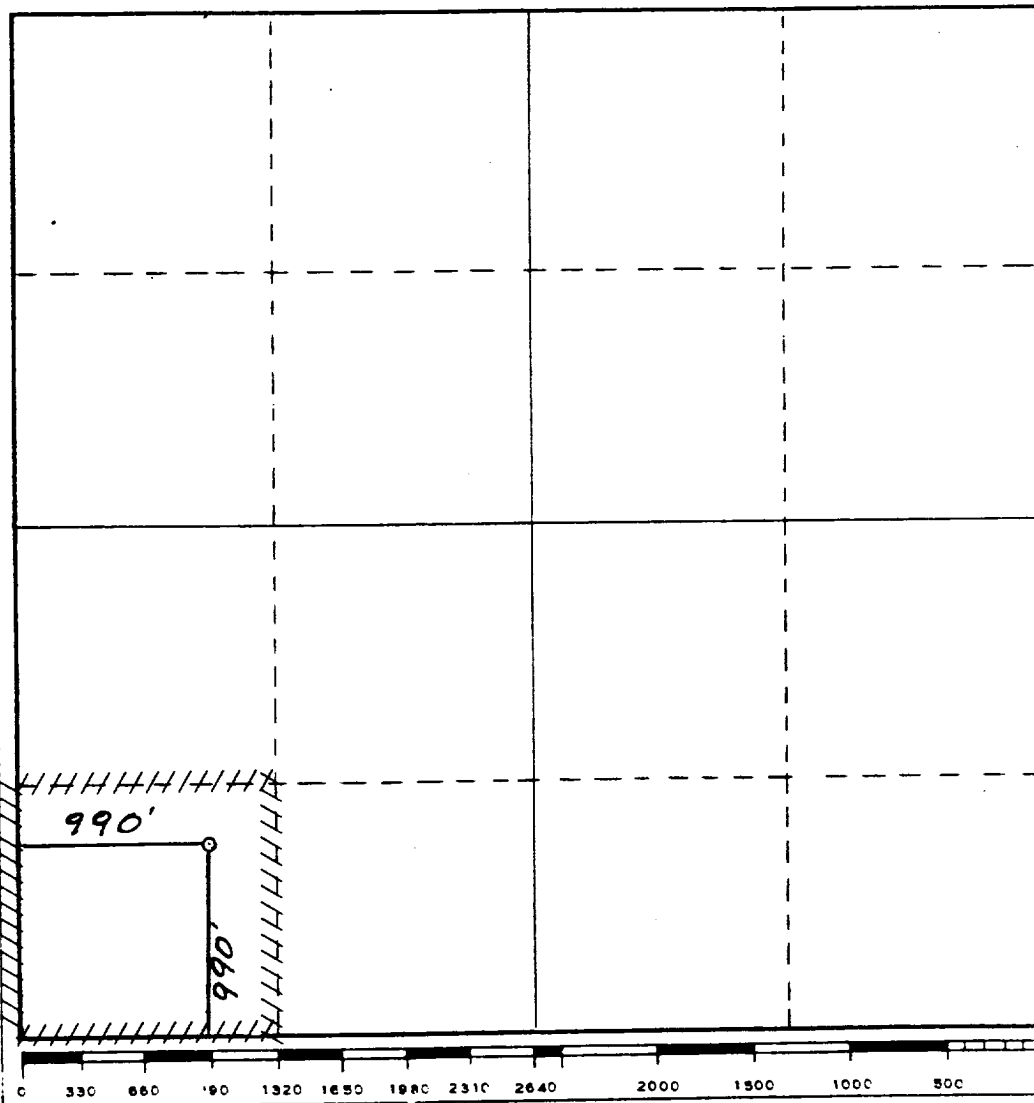
Operator SIETE OIL & GAS CORPORATION			Lease Blackhawk Federal		Well No. 4
Unit Letter M	Section 24	Township 18 South	Range 31 East	County Eddy	
Actual Footage Location of Well: 990 feet from the South line and 990 feet from the West line					
Ground Level Elev. 3694.	Producing Formation Grayburg		Pool Shugart-Yates-Seven Rivers-Queen-Grayburg	Dedicated Acreage: 40 Acres	

1. Outline the acreage dedicated to the subject well by colored pencil or hatchure marks on the plat below.
2. If more than one lease is dedicated to the well, outline each and identify the ownership thereof (both as to working interest and royalty).
3. If more than one lease of different ownership is dedicated to the well, have the interests of all owners been consolidated by communitization, unitization, force-pooling, etc?

☐ Yes ☐ No If answer is "yes," type of consolidation _____

If answer is "no," list the owners and tract descriptions which have actually been consolidated. (Use reverse side of this form if necessary.) _____

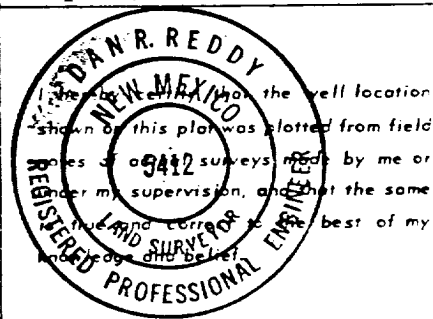
No allowable will be assigned to the well until all interests have been consolidated (by communitization, unitization, forced-pooling, or otherwise) or until a non-standard unit, eliminating such interests, has been approved by the Commission.



CERTIFICATION

I hereby certify that the information contained herein is true and complete to the best of my knowledge and belief.

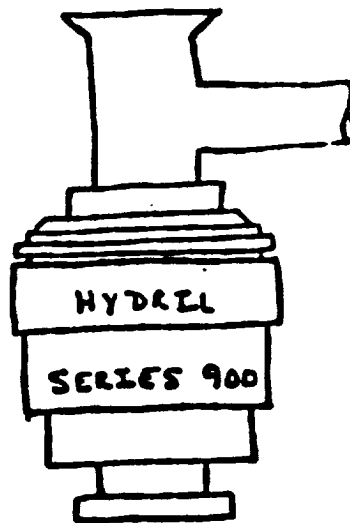
Name *Sunny Lingo*
Position
Vice President
Company
Siete Oil & Gas Corporation
Date
May 27, 1986

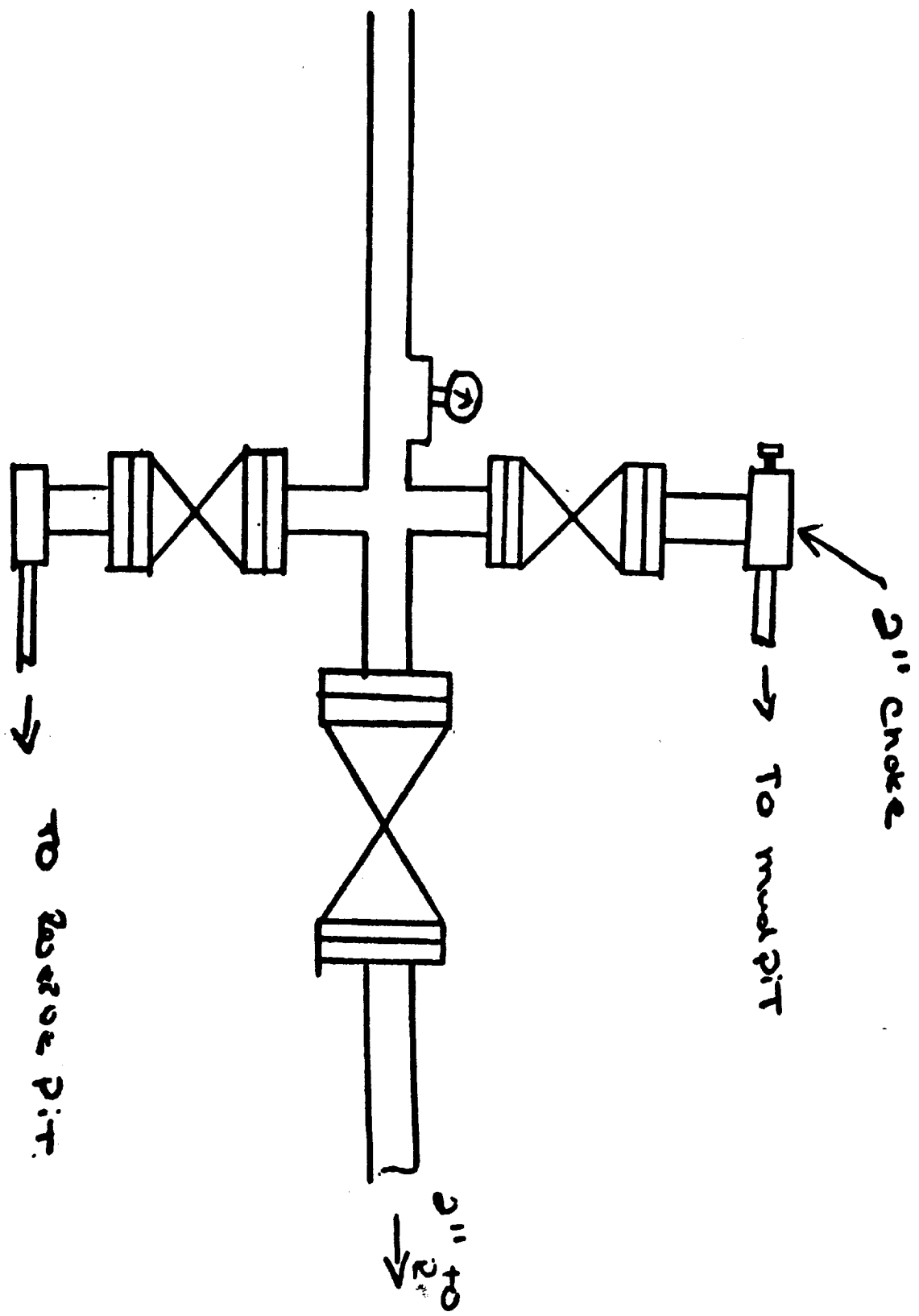


Date Surveyed
May 16, 1986
Registered Professional Engineer
and/or Land Surveyor
Dan R. Reddy
Certificate No.
NM PE&LS NO. 5412

BLOWOUT PREVENTER

REGAN
HYDRIL TYPE
SERIES 900
6000# TEST





Accumulator

are operated.
to gal. reservoir

1st & 2nd lines to
Pipe Rams & Blind
Rams

RECEIVED
JUN 5 1986
O.C. 2
HOBBS OFFICE

SUPPLEMENTAL DRILLING DATA
SIETE OIL AND GAS CORPORATION
BLACKHAWK FEDERAL NO. 4
990' PSL & 990' FWL
Section 24: T18S, R31E
Eddy County, New Mexico
Lease Number - LC-065680

The following items supplement "Onshore Oil and Gas Order No. 1:

1. The geologic surface is quaternary.
2. The estimated geological marker tops:

B/Salt	2150'
Yates	2420'
Queen	3480'
Grayburg	4050'
San Andres	4430'

3. Estimated depths to water, oil or gas:

Water: 200'
Oil or Gas: 3505'

4. Proposed casing program:

<u>Size</u>	<u>Interval</u>	<u>Weight</u>	<u>Grade</u>	<u>Joint</u>	<u>New or Used</u>
8 5/8"	0 - 400'	24#	J-55	ST&C	New
5 1/2"	0 - 4500'	15.5#	J-55	ST&C	New

5. Pressure Control Equipment: The blowout preventer will be a double ram type preventer. A sketch is attached.
6. Mud Program: 0-400': Native mud adding gel and lime for sufficient viscosity to insure clean hole for running casing.
400' - 4500': Drill out with native becoming brine at 4200' add starch and salt gel to maintain a viscosity of 32-38, mud weight 9.8 - 10.0, viscosity at T.D. 40.0.
7. Auxiliary Equipment: A kelly cock will be installed on the rig floor while drilling operations are in progress.
8. Testing, Logging and Coring Programs: Possible drill stem tests and/or coring is not planned.
Logging: Compensated Neutron - Formation Density - Gamma Ray - Caliper
- Dual Laterolog - RXO

W MEXICO
CLAYTON BASIN QUADRANGLE
15-MINUTE SERIES

3240' 1
BUCKEYE

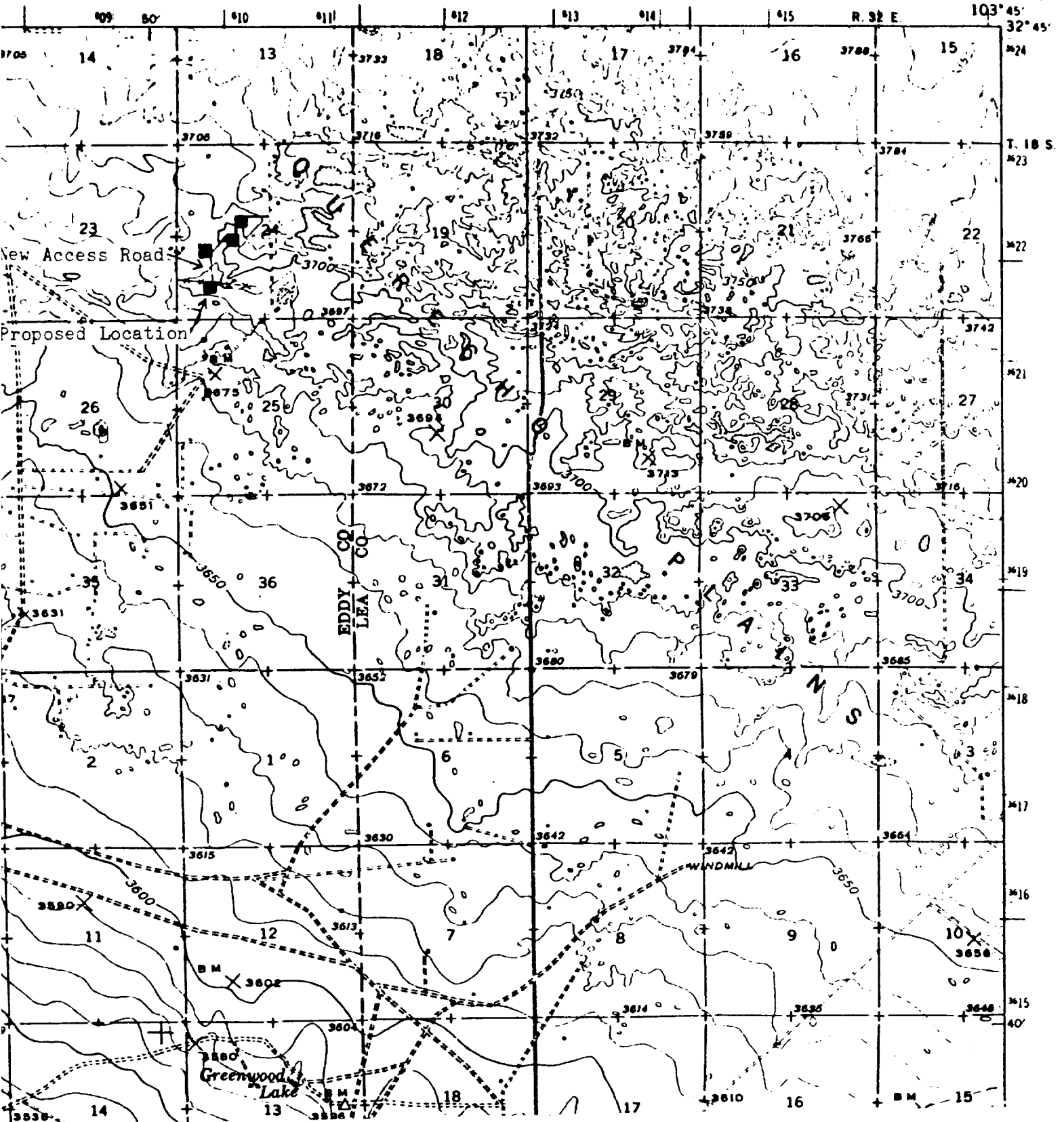
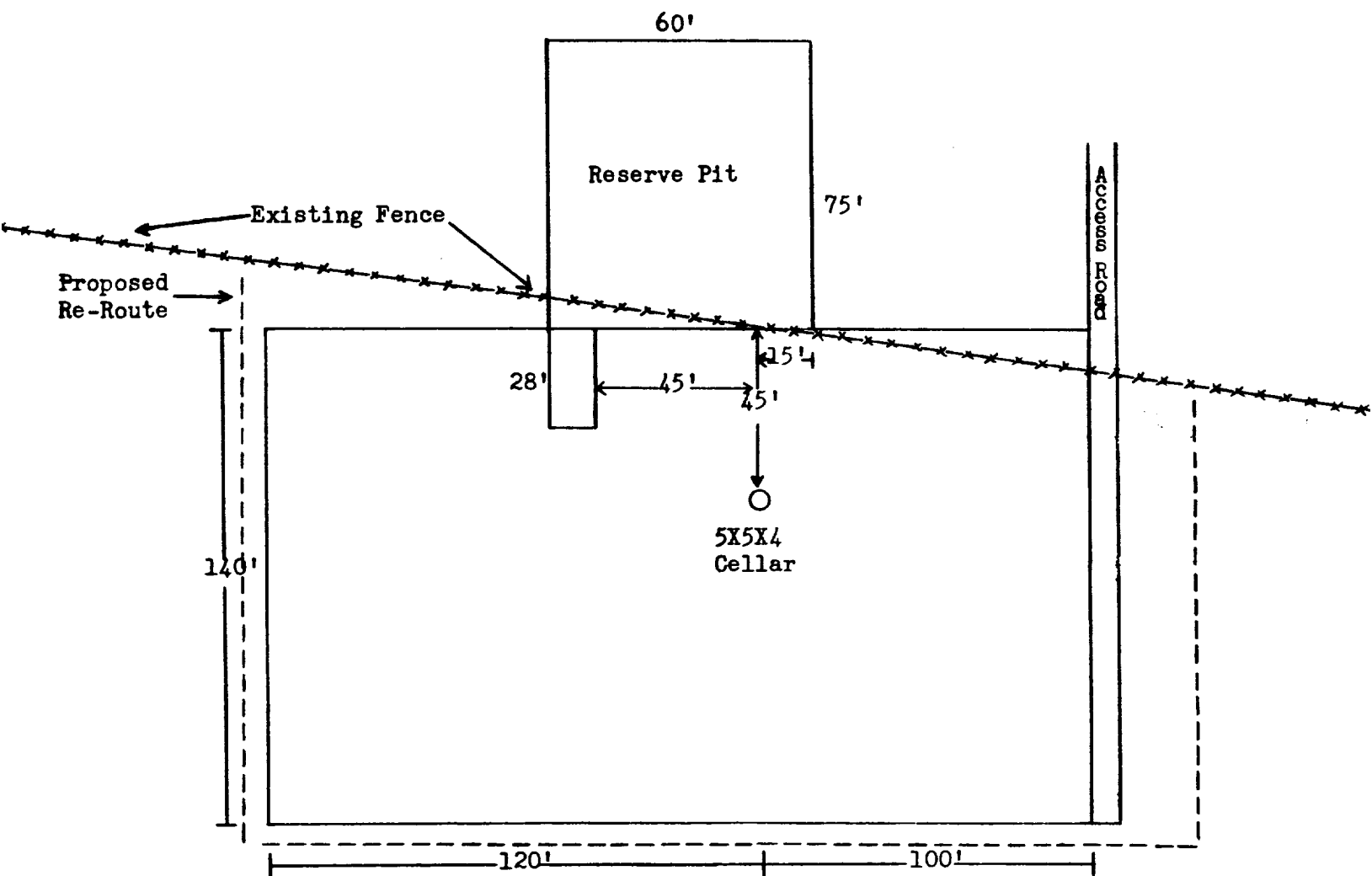


Exhibit "B"
Siete Oil & Gas Corporation
Blackhawk Federal #4
990' FSL & 990' FWL
Sec. 24, T18S, R31E
Eddy County, NM

1
N



I&M Drilling Rig No. 1

Exhibit "D"
Siete Oil & Gas Corporation
Blackhawk Federal #4
990' FSL & 990' FWL
Sec. 24, T18S, R31E
Eddy County, NM



SIETE OIL & GAS CORPORATION

*Petroleum Building Suite 200
P.O. Box 2523 Roswell, New Mexico 88201
Telephone (505) 622-2202*

May 27, 1986

Bureau of Land Management
Post Office Box 1778
Carlsbad, New Mexico 88220

RE: Electric Line-Blackhawk Fed. #4
Section 24: T18S, R31E
Eddy County, New Mexico
990' FSL & 990' FWL

Gentlemen:

This letter will confirm our agreement that in the event Siete Oil & Gas Corporation installs electrical lines and poles for the electrification of the Blackhawk Federal #4 Well, Siete shall restore the electrical right-of-way to its present state upon plugging and abandoning the well.

Yours truly,

SIETE OIL & GAS CORPORATION

BY:


Sonny Longo
Vice President

BGU/mb

RECEIVED
JUN 5 1986
O.C.D.
HOBBS OFFICE