

NO. OF COPIES RECEIVED	
DISTRIBUTION	
SANTA FE	✓
FILE	✓
U.S.G.S.	✓
LAND OFFICE	✓
OPERATOR	✓

P. O. BOX 2088

SANTA FE, NEW MEXICO 87500

RECEIVED BY

APR 3 1986

ARTESIA, OFFICE

5A. Indicate Type of Lease

STATE ☐FEC ☒

5. State Oil & Gas Lease No.

APPLICATION FOR PERMIT TO DRILL DEEPEO, OR PLUG BACK

a. Type of Work

b. Type of Well DRILL ☒DEEPEO ☐PLUG BACK ☐OIL WELL ☐GAS WELL ☒

OTHER

SINGLE ZONE ☐MULTIPLE ZONE ☐

c. Name of Operator

Yates Petroleum Corporation

d. Address of Operator

207 South Fourth Street - Artesia, NM 88210

e. Location of Well

UNIT LETTER P

LOCATED 660

FEET FROM THE South

LINE

NO 660

FEET FROM THE East

LINE OF SEC. 13

TWP. 19S

RGE. 24E

NMPM

7. Unit Agreement Name

8. Farm or Lease Name

Molly QD Com

9. Well No.

1

10. Field and Pool, or Wildcat

Wildcat - 1/1/1/1

17. County

Eddy

19. Proposed Depth

9500'

19A. Formation

Mississippian

20. Rotary or C.T.

Rotary

1. Elevations (show whether DF, KI, etc.)

3601' GR

21A. Kind & Status Plug. Bond

Blanket

21B. Drilling Contractor

Undesignated

22. Approx. Date Work will start

ASAP

3.

PROPOSED CASING AND CEMENT PROGRAM

SIZE OF HOLE	SIZE OF CASING	WEIGHT PER FOOT	SETTING DEPTH	SACKS OF CEMENT	EST. TOP
17-1/2"	13-3/8"	48# H-40	Approx. 400'	300 sacks	Circulate
12-1/4"	8-5/8"	24# K-55	" 1000"	750 sacks	Circulate
7-7/8"	5-1/2"	15.5 & 17# K-55 & 17# N-80	TD	400 sacks	

We propose to drill and test the Mississippian and intermediate formations. Approximately 400' of surface casing will be set and cement circulated to shut off gravel and casings. Intermediate casing will be set 100' below the Artesian Water Zone. If commercial, production casing will be run and cemented with adequate cover, perforated and stimulated as needed for production.

MUD PROGRAM: FW gel/LCM to 960', fresh water to 4000', starch-driskak-KCL to 8200', starch-driskak-KCL to TD

tested ID-1
NL, API
6-13-86

BOP PROGRAM: BOP's will be installed at the offset and tested daily.

GAS NOT DEDICATED

APPROVAL VALID FOR 180 DAYS

PERMIT EXPIRES 12-13-86

UNLESS DRILLING UNDERWAY

THIS IS AN UNORTHODOX LOCATION. A HEARING WILL BE SCHEDULED IN THE FUTURE.

ABOVE SPACE DESCRIBE PROPOSED PROGRAM; IF PROPOSAL IS TO DEEPEO OR PLUG BACK, GIVE DATA ON PRESENT PRODUCTIVE ZONE AND PROPOSED NEW PRODUCTIVE ZONE. GIVE BLOWOUT PREVENTER PROGRAM, IF ANY.

I hereby certify that the information above is true and complete to the best of my knowledge and belief.

Signed Cy Cowan Title Regulatory Agent Date April 3, 1986

(This space for Original Signed By)
Mike Williams

PROVED BY Oil & Gas Inspector TITLE DATE JUN 13 1986

CONDITIONS OF APPROVAL, IF ANY:

NSL R-8238

ADD. 6-10-86

Notify N.M.O.C.C. in sufficient
time to witness cementing

the 6:5/8 casing

NEW MEXICO OIL CONSERVATION COMMISSION
WELL LOCATION AND ACREAGE DEDICATION PLAT

Form C-102
Supersedes C-128
Effective 1-1-65

All distances must be from the outer boundaries of the Section.

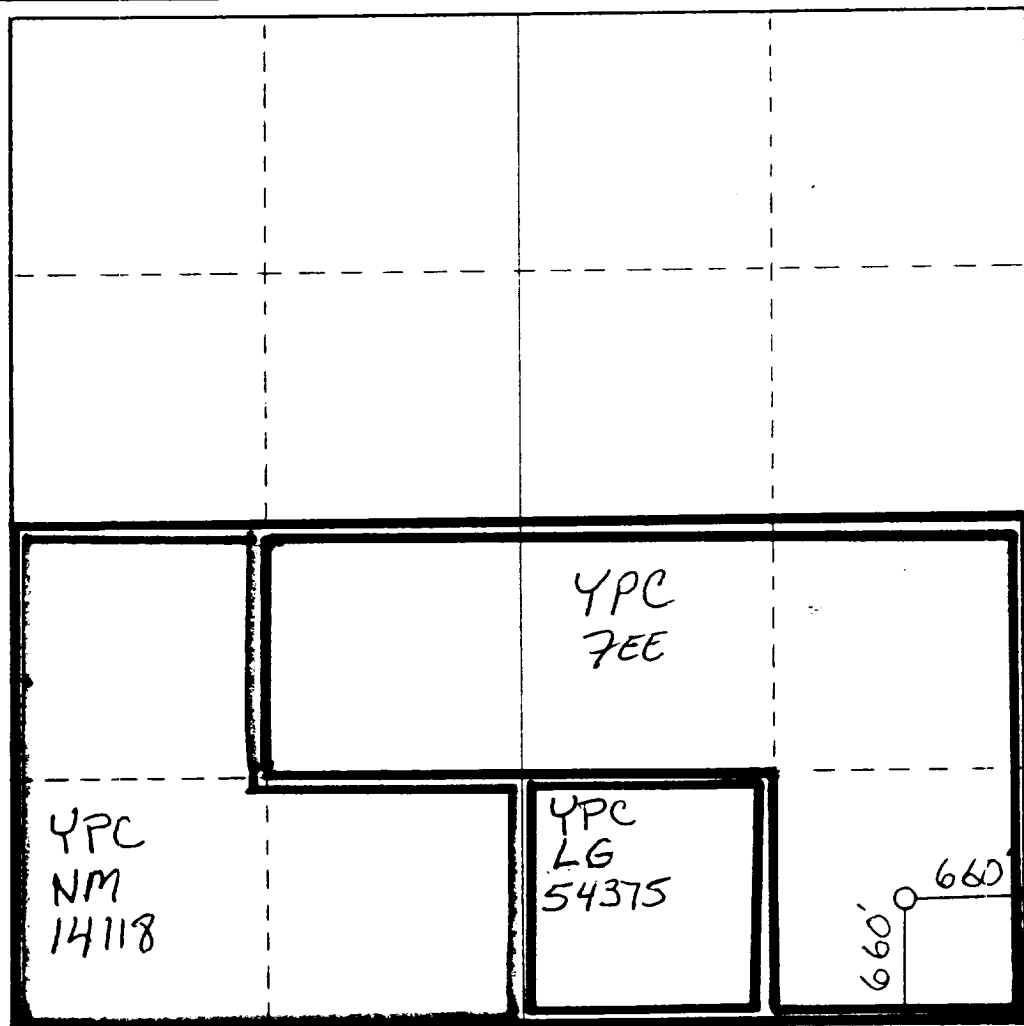
Operator Yates Petroleum Corporation ✓			Lease Molly "QD" Com		Well No. 1
Unit Letter P	Section 13	Township 19S	Range 24E	County Eddy	
Actual Footage Location of Well: 660 feet from the South line and 660 feet from the East line					
Ground Level Elev. 3601'	Producing Formation MISSISSIPPIAN		Pool WILDCAT	Dedicated Acreage: 320 Acres	

- Outline the acreage dedicated to the subject well by colored pencil or hatchure marks on the plat below.
- If more than one lease is dedicated to the well, outline each and identify the ownership thereof (both as to working interest and royalty).
- If more than one lease of different ownership is dedicated to the well, have the interests of all owners been consolidated by communitization, unitization, force-pooling, etc?

☒ Yes ☐ No If answer is "yes," type of consolidation TO BE COMMUNITIZED

If answer is "no," list the owners and tract descriptions which have actually been consolidated. (Use reverse side of this form if necessary.)

No allowable will be assigned to the well until all interests have been consolidated (by communitization, unitization, forced-pooling, or otherwise) or until a non-standard unit, eliminating such interests, has been approved by the Commission.



CERTIFICATION

I hereby certify that the information contained herein is true and complete to the best of my knowledge and belief.

Cy Cowan
Name Cy Cowan

Position
Regulatory Agent

Company
Yates Petroleum Corp.

Date
March 28, 1986

I hereby certify that the well location shown on this plat was plotted from field notes of actual surveys made by me or under my supervision, and that the same is true and correct to the best of my knowledge and belief.

DAN R. REDD
NEW MEXICO
REGISTERED PROFESSIONAL ENGINEER AND SURVEYOR
5412
3/25/86

Date Surveyed

Registered Professional Engineer and/or Land Surveyor

Dan R. Redd
Certificate No.

NM PE&LS NO. 5412

Flowline

BOP
2000 psi

ANNULAR BOP
(Hydrill)

900

PIPE RAMS
900

Shaffer 10" Series 900

Hydraulically Operated B.O.P.'s

BLIND RAMS
900

Steel Valve

900

4 Inch Line

Choke Manifold

Choke Manifold

1. All preventers to be hydraulically operated with secondary manual controls installed prior to drilling out from under casing.
2. Choke outlet to be a minimum of 4" diameter.
3. Kill line to be of all steel construction of 2" minimum diameter.
4. All connections from operating manifolds to preventers to be all steel. hole or tube a minimum of one inch in diameter.
5. The available closing pressure shall be at least 15% in excess of that required with sufficient volume to operate the B.O.P.'s.
6. All connections to and from preventer to have a pressure rating equivalent to that of the B.O.P.'s.
7. Inside blowout preventer to be available on rig floor.
8. Operating controls located a safe distance from the rig floor.
9. Hole must be kept filled on trips below intermediate casing.
10. D. P. float must be installed and used below zone of first gas intrusion.