

UNITED STATES
DEPARTMENT OF THE INTERIOR
BUREAU OF LAND MANAGEMENT

APPLICATION FOR PERMIT TO DRILL, DEEPEN, OR PLUG BACK

1a. TYPE OF WORK

DRILL ☒

DEEPEN ☐

PLUG BACK ☐

b. TYPE OF WELL

OIL
WELL ☒

GAS
WELL ☐

OTHER

SING
ZONE ☐

MULTIPLE
ZONE ☐

2. NAME OF OPERATOR

Siete Oil & Gas Corporation

3. ADDRESS OF OPERATOR

P. O. Box 2523, Roswell, NM 88201

4. LOCATION OF WELL (Report location clearly and in accordance with any State requirements.)

At surface

2310' FWL, 330' FEL, NE/4 SE/4, Unit

At proposed prod. zone

RECEIVED BY
AUG 25 1986

R. G. D.
APR 15, 1986

5. LEASE DESIGNATION AND SERIAL NO.

LC-065680

6. IF INDIAN, ALLOTTEE OR TRIBE NAME

7. UNIT AGREEMENT NAME

8. FARM OR LEASE NAME

Blackhawk Federal

9. WELL NO.

5

10. FIELD AND POOL, OR WILDCAT

Shugart-Grayburg-San Andres

11. SEC., T., R., M., OR BLK.
AND SURVEY OR AREA

Sec. 23: T18S, R31E

12. COUNTY OR PARISH

Eddy

13. STATE

NM

14. DISTANCE IN MILES AND DIRECTION FROM NEAREST TOWN OR POST OFFICE*

14.5 miles Southeast of Loco Hills, NM

15. DISTANCE FROM PROPOSED*

LOCATION TO NEAREST
PROPERTY OR LEASE LINE, FT.
(Also to nearest drlg. unit line, if any)

330'

16. NO. OF ACRES IN LEASE

1160'

17. NO. OF ACRES ASSIGNED

TO THIS WELL

40

18. DISTANCE FROM PROPOSED LOCATION*

TO NEAREST WELL, DRILLING, COMPLETED,
OR APPLIED FOR, ON THIS LEASE, FT.

1270'

19. PROPOSED DEPTH

4500'

20. ROTARY OR CABLE TOOLS

Rotary

21. ELEVATIONS (Show whether DF, RT, GR, etc.)

3696' GR

22. APPROX. DATE WORK WILL START*

November 1, 1986

23.

PROPOSED CASING AND CEMENTING PROGRAM

SIZE OF HOLE	SIZE OF CASING	WEIGHT PER FOOT	SETTING DEPTH	QUANTITY OF CEMENT
12 1/2"	8 5/8"	24.0#	400'	400 sx (circulate)
7 7/8"	5 1/2"	15.5#	4500'	2200 sx (circulate)

Selectively perforate and treat pay zones.

Attachments:

Survey plat (C-102)

Supplemental drilling data

Surface use plan

IN ABOVE SPACE DESCRIBE PROPOSED PROGRAM: If proposal is to deepen or plug back, give data on present productive zone and proposed new productive zone. If proposal is to drill or deepen directionally, give pertinent data on subsurface locations and measured and true vertical depths. Give blowout preventer program, if any.

24.

SIGNED

Sammy Longo

TITLE Vice President

DATE August 15, 1986

(This space for Federal or State office use)

PERMIT NO.

APPROVAL DATE

Original: Charles S. [unclear]

APPROVED BY

Aron [unclear]

TITLE

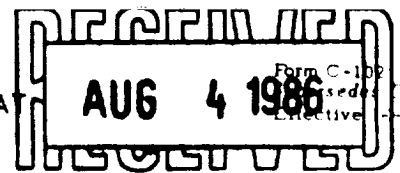
DATE

CONDITIONS OF APPROVAL, IF ANY:

*See Instructions On Reverse Side

APPROVAL SUBJECT TO
GENERAL REQUIREMENTS AND
SPECIAL STIPULATIONS

NEW MEXICO OIL CONSERVATION COMMISSION
WELL LOCATION AND ACREAGE DEDICATION PLAT



All distances must be from the outer boundaries of the Section

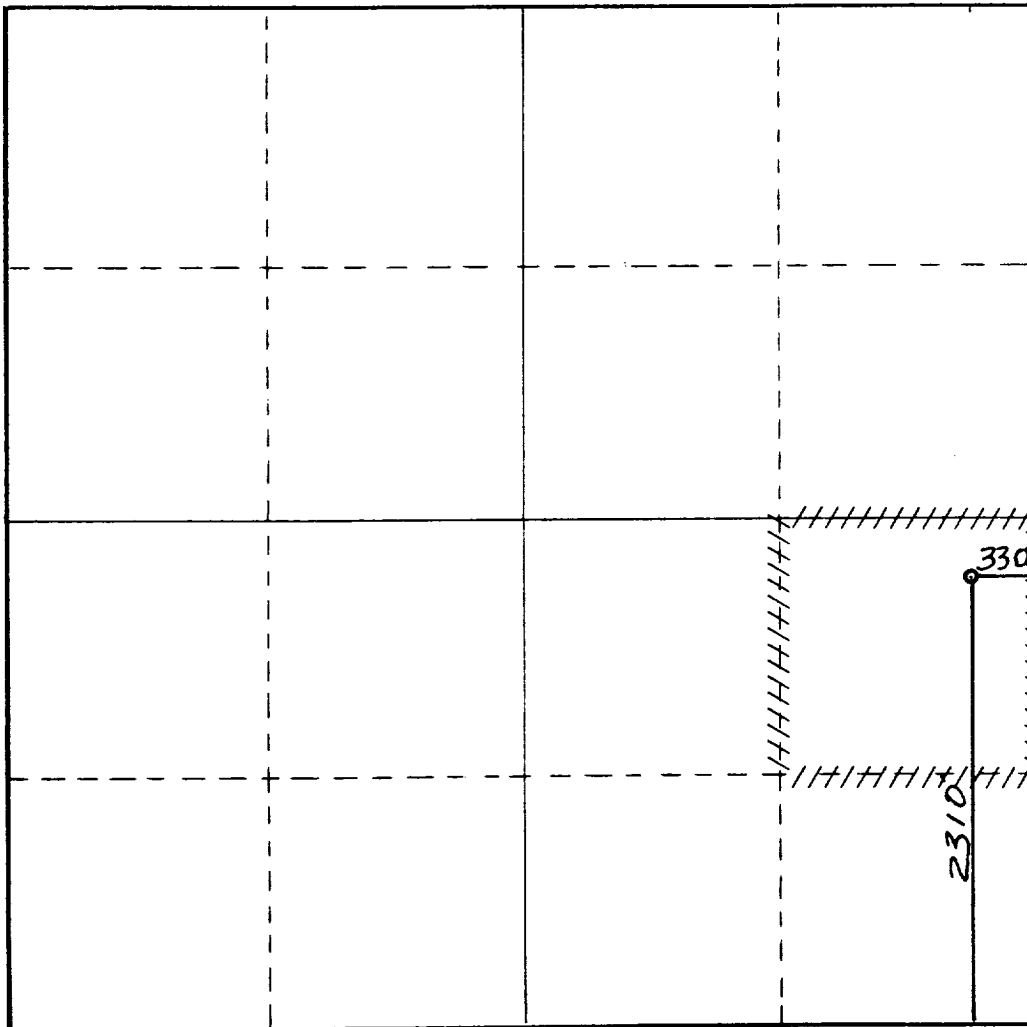
Operator SIETE OIL & GAS CORPORATION			Lease Blackhawk Federal			Well No. 5
Unit Letter I	Section 23	Township 18 South	Range 31 East	County Eddy		
Actual Footage Location of Well: 2310 feet from the South line and 330 feet from the East line						
Ground Level Elev. 3696.	Producing Formation Queen		Pool Shugart-Grayburg-San Andres		Dedicated Acreage 40 Acres	

1. Outline the acreage dedicated to the subject well by colored pencil or hachure marks on the plat below.
2. If more than one lease is dedicated to the well, outline each and identify the ownership thereof (both as to working interest and royalty).
3. If more than one lease of different ownership is dedicated to the well, have the interests of all owners been consolidated by communitization, unitization, force-pooling, etc?

☐ Yes ☐ No If answer is "yes," type of consolidation _____

If answer is "no," list the owners and tract descriptions which have actually been consolidated. (Use reverse side of this form if necessary.) _____

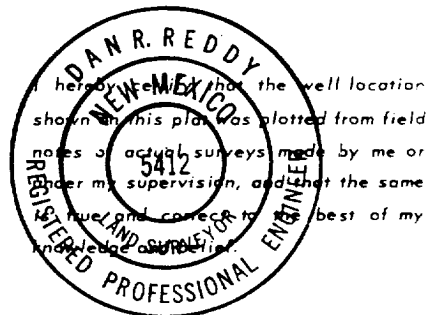
No allowable will be assigned to the well until all interests have been consolidated (by communitization, unitization, forced-pooling, or otherwise) or until a non-standard unit, eliminating such interests, has been approved by the Commission.



CERTIFICATION

I hereby certify that the information contained herein is true and complete to the best of my knowledge and belief.

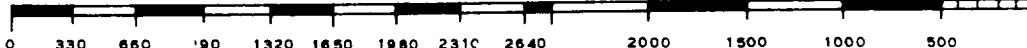
Name *Sunny Largo*
Position
Vice President
Company
Siete Oil & Gas Corporation
Date
August 5, 1986



Date Surveyed
August 1, 1986
Registered Professional Engineer and/or Land Surveyor

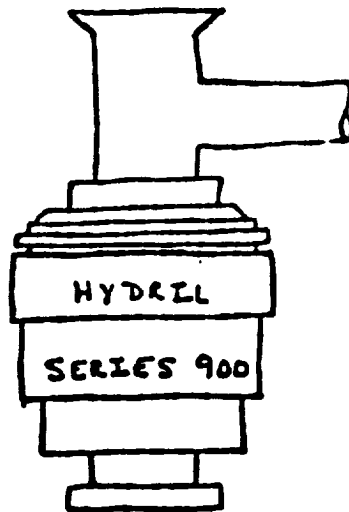
Dan R. Reddy
Certificate No.

NM PE&LS #5412



BLOWOUT PREVENTER

REGAN
HYDRIL TYPE
SERIES 900
6000# TEST



SUPPLEMENTAL DRILLING DATA
SIETE OIL AND GAS CORPORATION
BLACKHAWK FEDERAL NO. 5
2310' FSL & 330' FEL
Section 23: T18S, R31E
Eddy County, New Mexico
Lease Number - LC-065680

The following items supplement "Onshore Oil and Gas Order No. 1:

1. The geologic surface is quaternary.
2. The estimated geological marker tops:

B/Salt	2150'
Yates	2420'
Queen	3480'
Grayburg	4050'
San Andres	4430'

3. Estimated depths to water, oil or gas:

Water: 200'
Oil or Gas: 3505'

4. Proposed casing program:

<u>Size</u>	<u>Interval</u>	<u>Weight</u>	<u>Grade</u>	<u>Joint</u>	<u>New or Used</u>
8 5/8"	0 - 400'	24#	J-55	ST&C	New
5 1/2"	0 - 4500'	15.5#	J-55	ST&C	New

5. Pressure Control Equipment: The blowout preventer will be a double ram type preventer. A sketch is attached.

6. Mud Program: 0-400': Native mud adding gel and lime for sufficient viscosity to insure cleanhole for running casing.

400' - 4500': Drill out with native becoming brine at 4200' add starch and salt gel to maintain a viscosity of 32-38, mud weight 9.8 - 10.0, viscosity at T.D. 40.0.

7. Auxiliary Equipment: A kelly cock will be installed on the rig floor while drilling operations are in progress.

8. Testing, Logging and Coring Programs: Possible drill stem tests and/or coring is not planned through the Grayburg Zone.

Logging: Compensated Neutron - Formation Density - Gamma Ray - Caliper
- Dual Laterolog - RXO

NEW MEXICO
CLAYTON BASIN QUADRANGLE
15-MINUTE SERIES

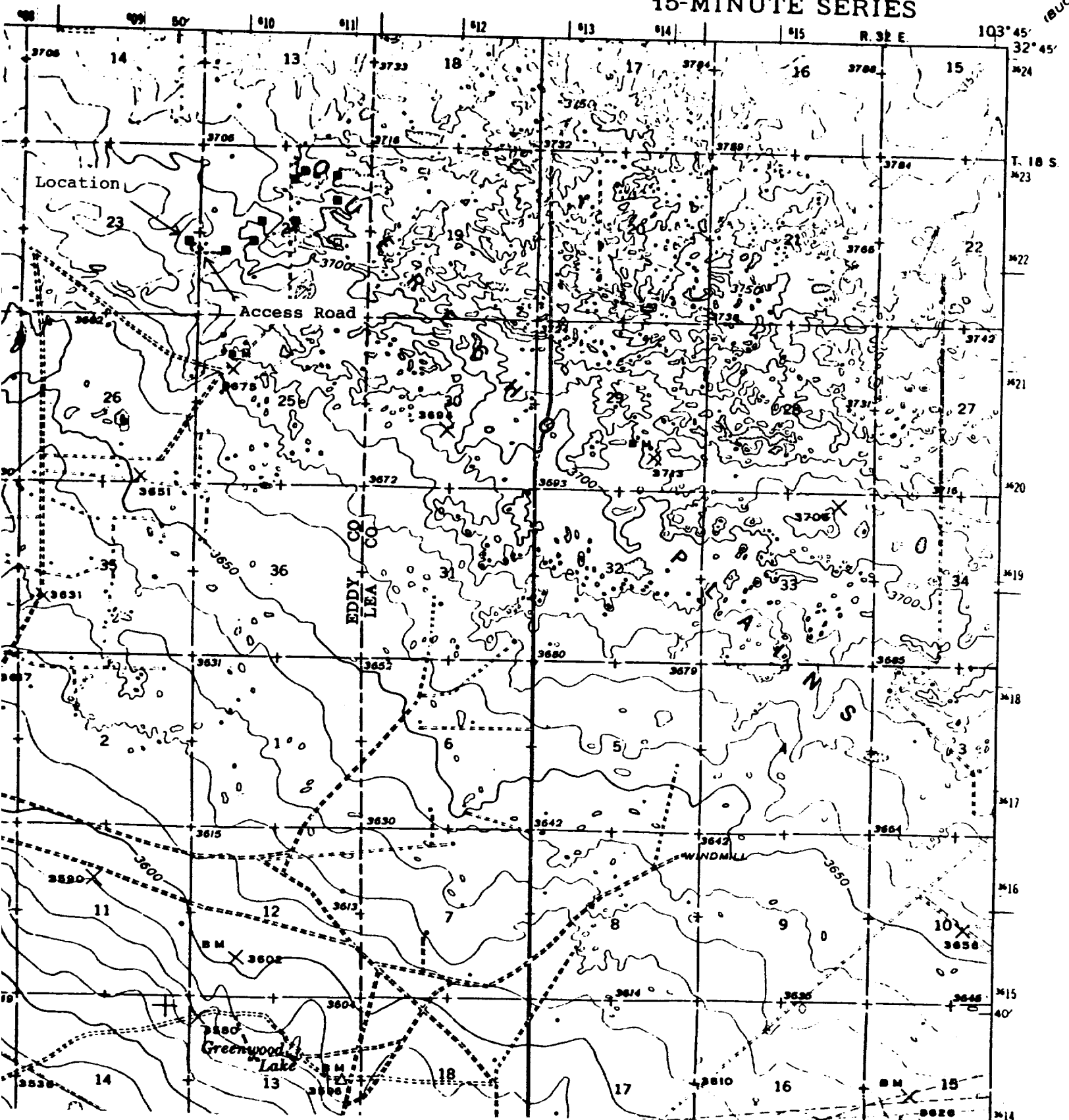
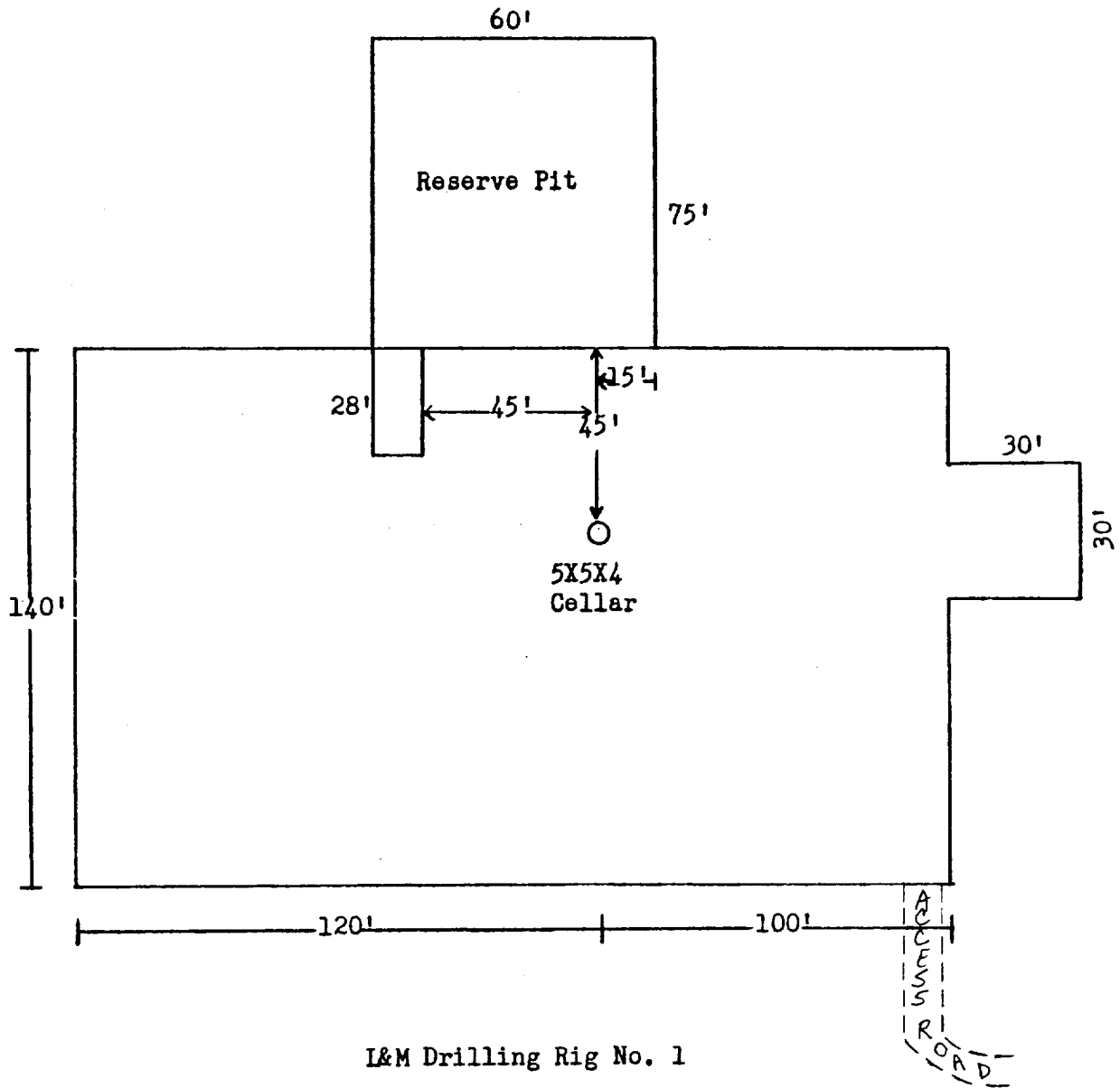


Exhibit 'B'
Siete Oil & Gas Corporation
Blackhawk Federal #5
330' FEL & 2310' FSL
Sec. 23, T18S, R31E
Eddy County, N.M.

1
N



L&M Drilling Rig No. 1

Exhibit 'D'
Siete Oil & Gas Corporation
Blackhawk Federal #5
330' FEL & 2310' FSL
Sec. 23, T18S, R31E
Eddy County, N.M.