

N. M. OIL CONS. COMMISSION
UNITED STATES 1980
DEPARTMENT OF THE INTERIOR
BUREAU OF LAND MANAGEMENT
88240

Form approved.
Budget Bureau No. 1004-0136
Expires August 31, 1985

30-015-25723
5. LEASE DESIGNATION AND SERIAL NO.

NM-025777

6. IF INDIAN, ALLOTTEE OR TRIBE NAME

7. UNIT AGREEMENT NAME

8. FARM OR LEASE NAME

Geronimo Federal

9. WELL NO.

9

10. FIELD AND POOL, OR WILDCAT

East Shugart Delaware

11. SEC., T., R., M., OR BLK.
AND SURVEY OR AREA

Sec. 24: T18S, R31E

12. COUNTY OR PARISH

Eddy

13. STATE

NM

1a. TYPE OF WORK

DRILL ☒

DEEPEN ☐

PLUG BACK ☐

b. TYPE OF WELL

OIL
WELL ☒

GAS
WELL ☐

OTHER

SINGLE
WELL ☐

MULTIPLE
WELL ☐

2. NAME OF OPERATOR

Siete Oil & Gas Corporation

3. ADDRESS OF OPERATOR

P. O. Box 2523, Roswell, NM 88201

4. LOCATION OF WELL (Report location clearly and in accordance with any State requirements) (C) D.

At surface

1730' FNL, 1650' FEL, SW/4 NW/4, Unit lease

At proposed prod. zone

14. DISTANCE IN MILES AND DIRECTION FROM NEAREST TOWN OR POST OFFICE*

14.75 miles Southeast of Loco Hills, NM

16. DISTANCE FROM PROPOSED*

LOCATION TO NEAREST
PROPERTY OR LEASE LINE, FT.
(Also to nearest drig. unit line, if any)

330'

16. NO. OF ACRES IN LEASE

320

17. NO. OF ACRES ASSIGNED
TO THIS WELL

40

18. DISTANCE FROM PROPOSED LOCATION*
TO NEAREST WELL, DRILLING, COMPLETED,
OR APPLIED FOR, ON THIS LEASE, FT.

580'

19. PROPOSED DEPTH

5500'

20. ROTARY OR CABLE TOOLS

Rotary

21. ELEVATIONS (Show whether DF, RT, GR, etc.)

3708' GR

22. APPROX. DATE WORK WILL START*

December 10, 1986

23.

PROPOSED CASING AND CEMENTING PROGRAM

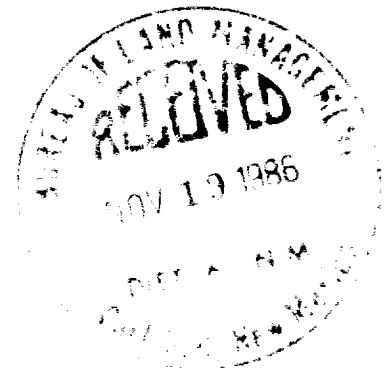
SIZE OF HOLE	SIZE OF CASING	WEIGHT PER FOOT	SETTING DEPTH	QUANTITY OF CEMENT
12 1/2"	8 5/8"	24.0#	350'	250 sxs Class "C" (circulated)
7 7/8"	5 1/2"	15.5#	5500'	2200 sxs Class "C"

Selectively perforate & treat pay zone.

Attachments:

Survey Plat (C-102)
Supplemental Drilling Data
Surface Use Plan

CONFIDENTIAL



IN ABOVE SPACE DESCRIBE PROPOSED PROGRAM: If proposal is to deepen or plug back, give data on present productive zone and proposed new productive zone. If proposal is to drill or deepen directionally, give pertinent data on subsurface locations and measured and true vertical depths. Give blowout preventer program, if any.

24.

SIGNED

H. D. Justice

TITLE V.P. Drilling & Production DATE 11/18/86

(This space for Federal or State office use)

PERMIT NO.

APPROVAL DATE

APPROVED BY

Raj Buri

TITLE

DATE

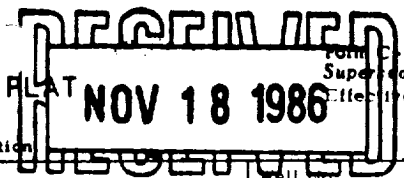
11-25-86

CONDITIONS OF APPROVAL, IF ANY:

*See Instructions On Reverse Side

Title 18 U.S.C. Section 1001, makes it a crime for any person knowingly and willfully to make to any department or agency of the United States any false, fictitious or fraudulent statements or representations as to any matter within its jurisdiction.

N. MEXICO OIL CONSERVATION COMMISS
WELL LOCATION AND ACREAGE DEDICATION PLAT



Form C-102
Supersedes C-128
Effective 1-1-65

All distances must be from the outer boundaries of the Section

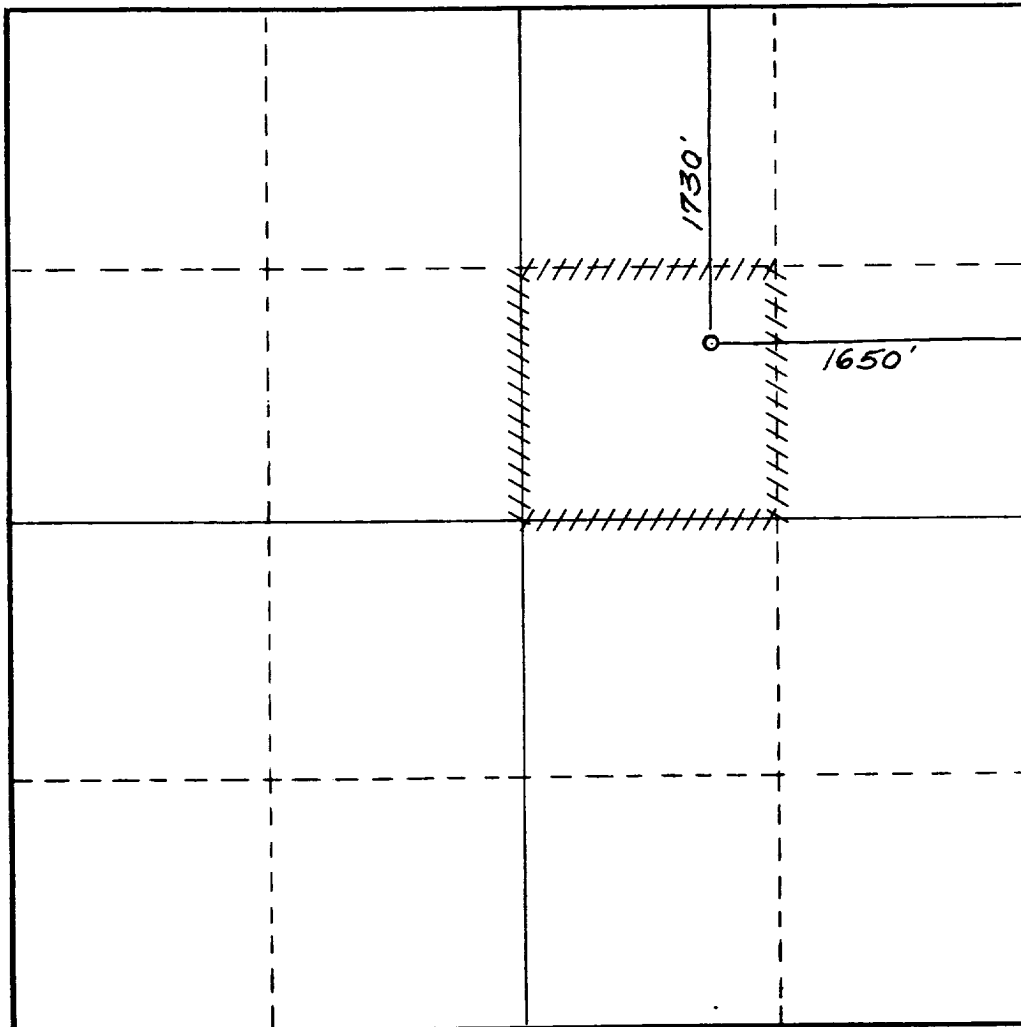
Operator SIETE OIL & GAS CORPORATION ✓		Lease Geronimo Federal		Well No. 9
Unit Letter G	Section 24	Township 18 South	Range 31 East	County Eddy
Actual Footage Location of Well: 1730 feet from the North line and 1650 feet from the East line				
Ground Level Elev. 3708.	Producing Formation Delaware	Pool East Sugart Delaware	Dedicated Acreage: 40 Acres	

1. Outline the acreage dedicated to the subject well by colored pencil or hachure marks on the plat below.
2. If more than one lease is dedicated to the well, outline each and identify the ownership thereof (both as to working interest and royalty).
3. If more than one lease of different ownership is dedicated to the well, have the interests of all owners been consolidated by communitization, unitization, force-pooling, etc?

☐ Yes ☐ No If answer is "yes," type of consolidation _____

If answer is "no," list the owners and tract descriptions which have actually been consolidated. (Use reverse side of this form if necessary.) _____

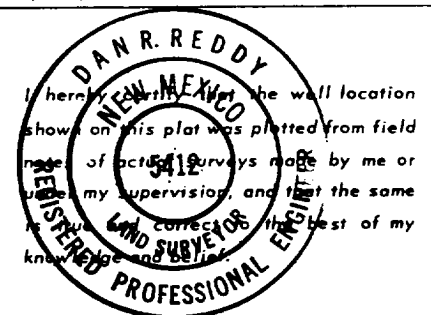
No allowable will be assigned to the well until all interests have been consolidated (by communitization, unitization, forced-pooling, or otherwise) or until a non-standard unit, eliminating such interests, has been approved by the Commission.



CERTIFICATION

I hereby certify that the information contained herein is true and complete to the best of my knowledge and belief.

Name
H. D. Justice
Position
V.P. Drilling & Production
Company
Siete Oil & Gas Corporation
Date
11/18/86

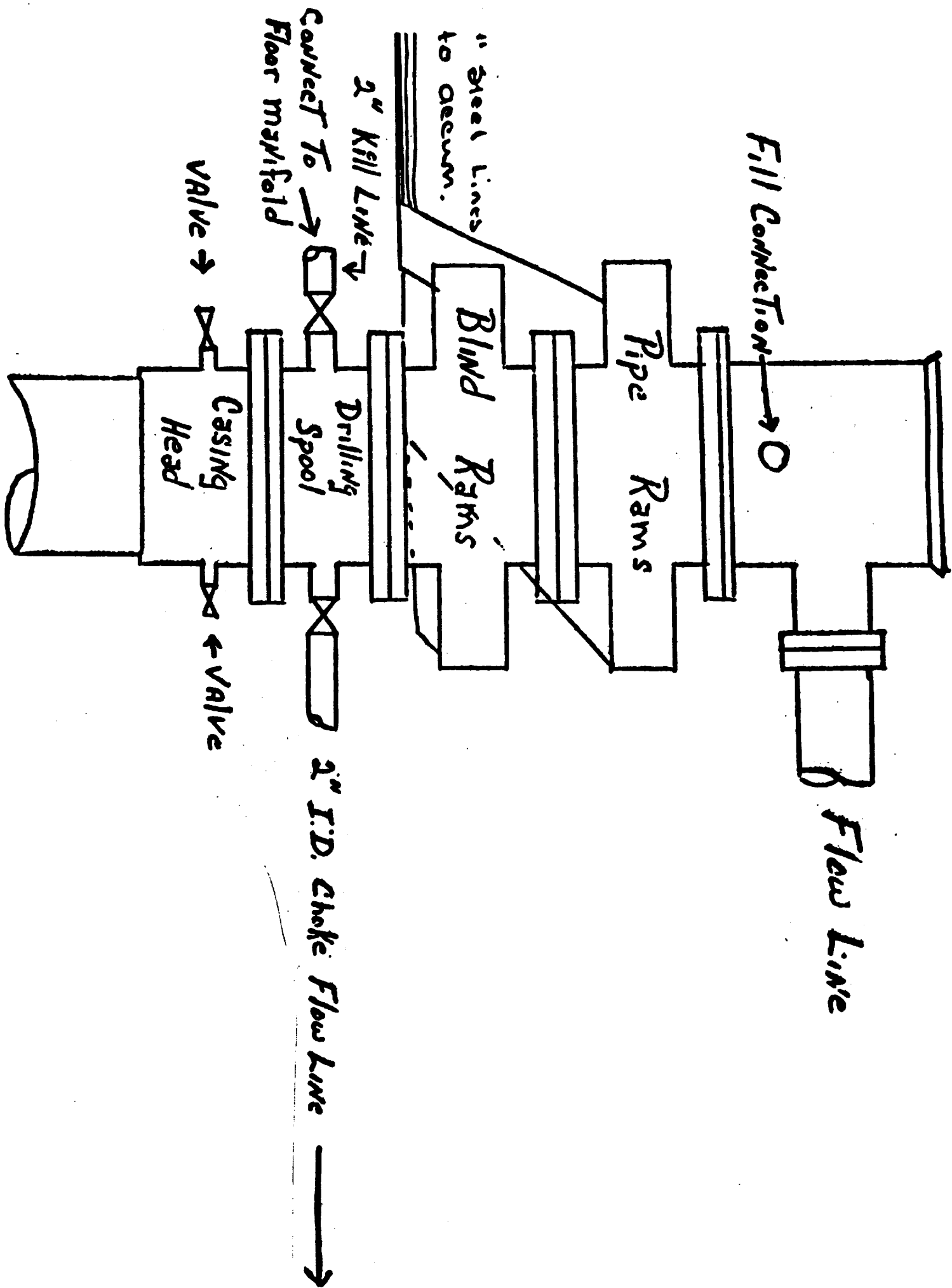


Date Surveyed
November 12, 1986
Registered Professional Engineer
and/or Land Surveyor

Dan R. Reddy
Certificate No.

NM PE&LS NO. 5412

0 330 660 990 1320 1650 1980 2310 2640 2000 1500 1000 500 0



SUPPLEMENTAL DRILLING DATA
SIETE OIL AND GAS CORPORATION
GERONIMO FEDERAL NO. 9
1730' FNL & 1650' FEL
Section 24: T18S, R31E
Eddy County, New Mexico
Lease Number - NM-025777

The following items supplement "Onshore Oil and Gas Order No. 1:

1. The geologic surface is quaternary.
2. The estimated geological marker tops:

Yates	2380'
Queen	3510'
Grayburg	3950'
San Andres	4410'
Delaware	4260'

3. Estimated depths to water, oil or gas:

Water: 220'

Oil or Gas: 4300' - 4900'

4. Proposed casing program:

<u>Size</u>	<u>Interval</u>	<u>Weight</u>	<u>Grade</u>	<u>Joint</u>	<u>New or Used</u>
8 5/8"	0 - 350'	24#	J-55	ST&C	New
5 1/2"	0 - 4500'	15.5#	J-55	ST&C	New

5. Pressure Control Equipment: The blowout preventer will be a double ram type preventer. A sketch is attached.
6. Mud Program: 0-350': Native mud adding gel and lime for sufficient viscosity to insure clean hole for running casing.

350' - 5500': Native brine, add lime for ph @10 for corrosion protection. At 4200' add starch and salt gel to establish a viscosity of 32-38, mud weight 9.8 - 10.0#/gallon, water loss of 20 cc or less.
7. Auxiliary Equipment: A kelly cock will be installed on the rig floor while drilling operations are in progress.
8. Testing, Logging and Coring Programs: Possible drill stem tests and/or coring is not planned through the Grayburg Zone.

Logging: Compensated Neutron - Formation Density - Gamma Ray - Caliper
- Dual Laterolog - RXO

EW MEXICO
CLAYTON BASIN QUADRANGLE
15-MINUTE SERIES

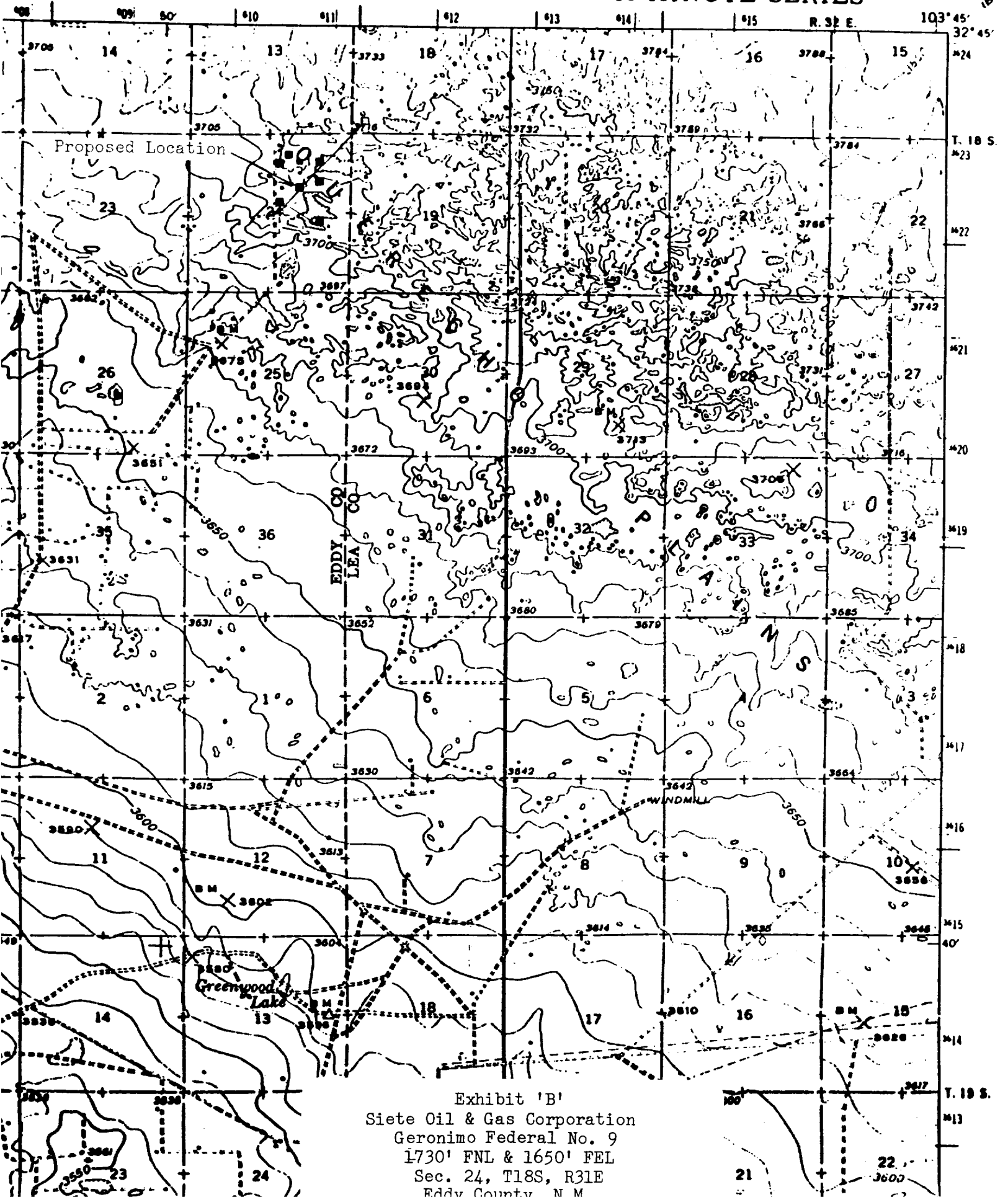


Exhibit 'B'
Siete Oil & Gas Corporation
Geronimo Federal No. 9
1730' FNL & 1650' FEL
Sec. 24, T18S, R31E
Eddy County, N.M.

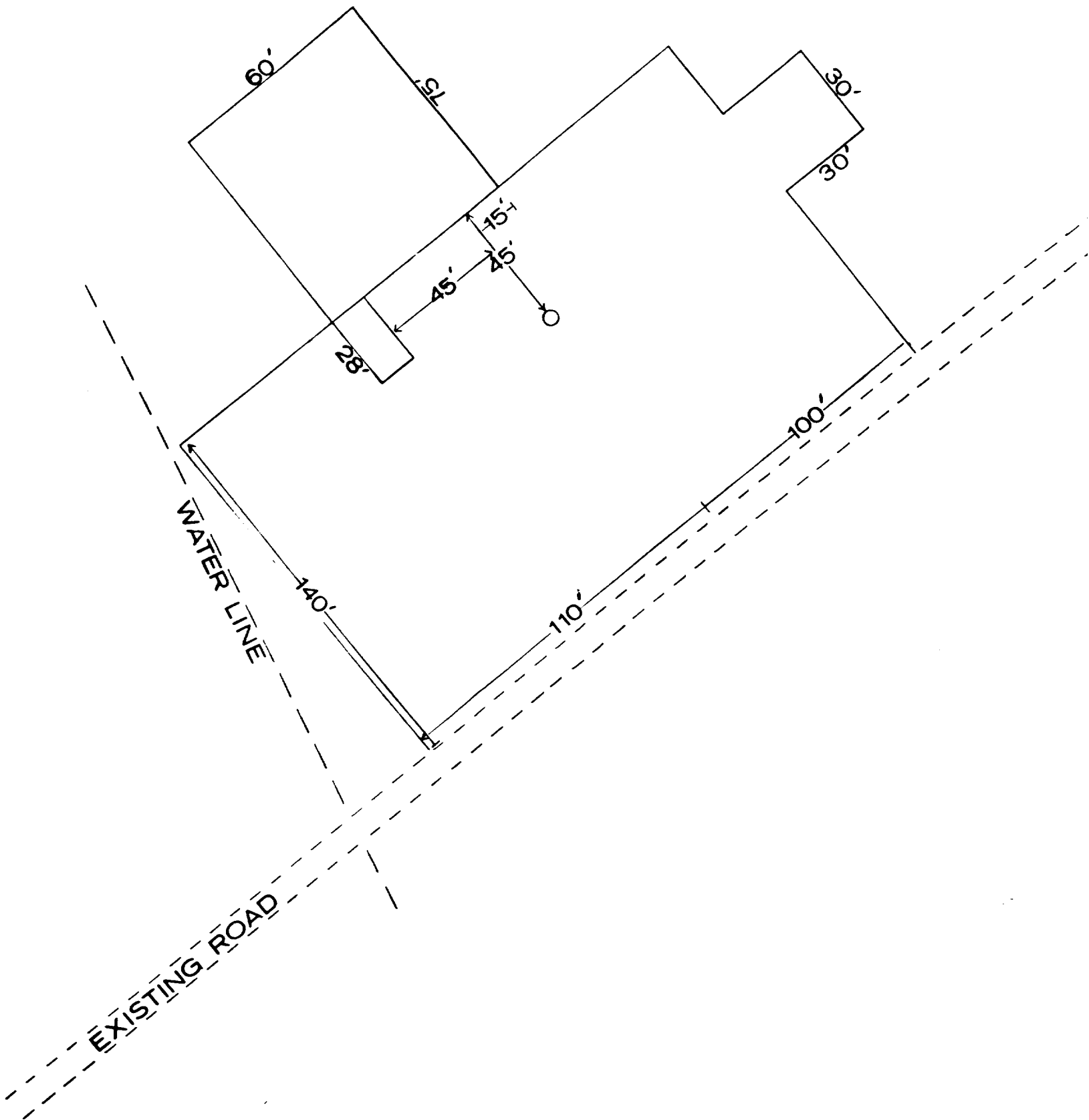


Exhibit 'D'

Siete Oil & Gas Corporation

Geronimo Federal No. 9

1730' FNL & 1650' FEL

Sec. 24, T18S, R31E

Eddy County, N.M.