

UNITED STATES DEPARTMENT OF THE INTERIOR BUREAU OF LAND MANAGEMENT

APPLICATION FOR PERMIT TO DRILL, DEEPEN, OR PLUG BACK

1a. TYPE OF WORK DRILL ☒ DEEPEN ☐ PLUG BACK ☐

b. TYPE OF WELL OIL WELL ☒ GAS WELL ☐ OTHER ☐ SINGLE ZONE ☐ MULTIPLE ZONE ☐

2. NAME OF OPERATOR Siete Oil & Gas Corporation

3. ADDRESS OF OPERATOR P. O. Box 2523, Roswell, NM 88201

4. LOCATION OF WELL (Report location clearly and in accordance with any State requirements.)

At surface 2310' FSL, 1650' FEL, N 1/4 SE/4, Unit Letter J, ARTESIA, OFFICE

14. DISTANCE IN MILES AND DIRECTION FROM NEAREST TOWN OR POST OFFICE\*

14.75 miles East of Loco Hills, NM

10. DISTANCE FROM PROPOSED\* LOCATION TO NEAREST PROPERTY OR LEASE LINE, FT. (Also to nearest drlg. unit line, if any) 330'

16. NO. OF ACRES IN LEASE 1160

17. NO. OF ACRES ASSIGNED TO THIS WELL 40

18. DISTANCE FROM PROPOSED LOCATION\* TO NEAREST WELL, DRILLING, COMPLETED, OR APPLIED FOR, ON THIS LEASE, FT. 1320'

19. PROPOSED DEPTH 4500'

20. ROTARY OR CABLE TOOLS Rotary

21. ELEVATIONS (Show whether DF, RT, GR, etc.)

3678'GR

22. APPROX. DATE WORK WILL START\*

March 10, 1987

23. PROPOSED CASING AND CEMENTING PROGRAM

SIZE OF HOLE	SIZE OF CASING	WEIGHT PER FOOT	SETTING DEPTH	QUANTITY OF CEMENT
12 1/2"	8 5/8"	24.0#	350'	200 sx (circulate)
7 7/8"	5 1/2"	15.5#	4500'	2200 sx (circulate)

Selectively perforate and treat pay zones.

Attachments:

Survey plat (C-102)  
Supplemental drilling data  
Surface use plan

IN ABOVE SPACE DESCRIBE PROPOSED PROGRAM: If proposal is to deepen or plug back, give data on present productive zone and proposed new productive zone. If proposal is to drill or deepen directionally, give pertinent data on subsurface locations and measured and true vertical depths. Give blowout preventer program, if any.

24. SIGNED Donald D. Justice TITLE V.P. Drilling & Production DATE 2/23/87

(This space for Federal or State office use)

PERMIT NO. 1016-360-1000-1000 APPROVAL DATE 3-4-87

APPROVED BY AGING TITLE AGING DATE 3-4-87

(CONDITIONS OF APPROVAL, IF ANY:)

\*See Instructions On Reverse Side

Title 18 U.S.C. Section 1001, makes it a crime for any person knowingly and willfully to make to any department or agency of the United States any false, fictitious or fraudulent statements or representations as to any matter within its jurisdiction.

**NEW MEXICO OIL CONSERVATION COMMISSION  
WELL LOCATION AND ACREAGE DEDICATION PLAT**

Form C-102  
Supersedes C-128  
Effective 1-1-65

All distances must be from the outer boundaries of the Section

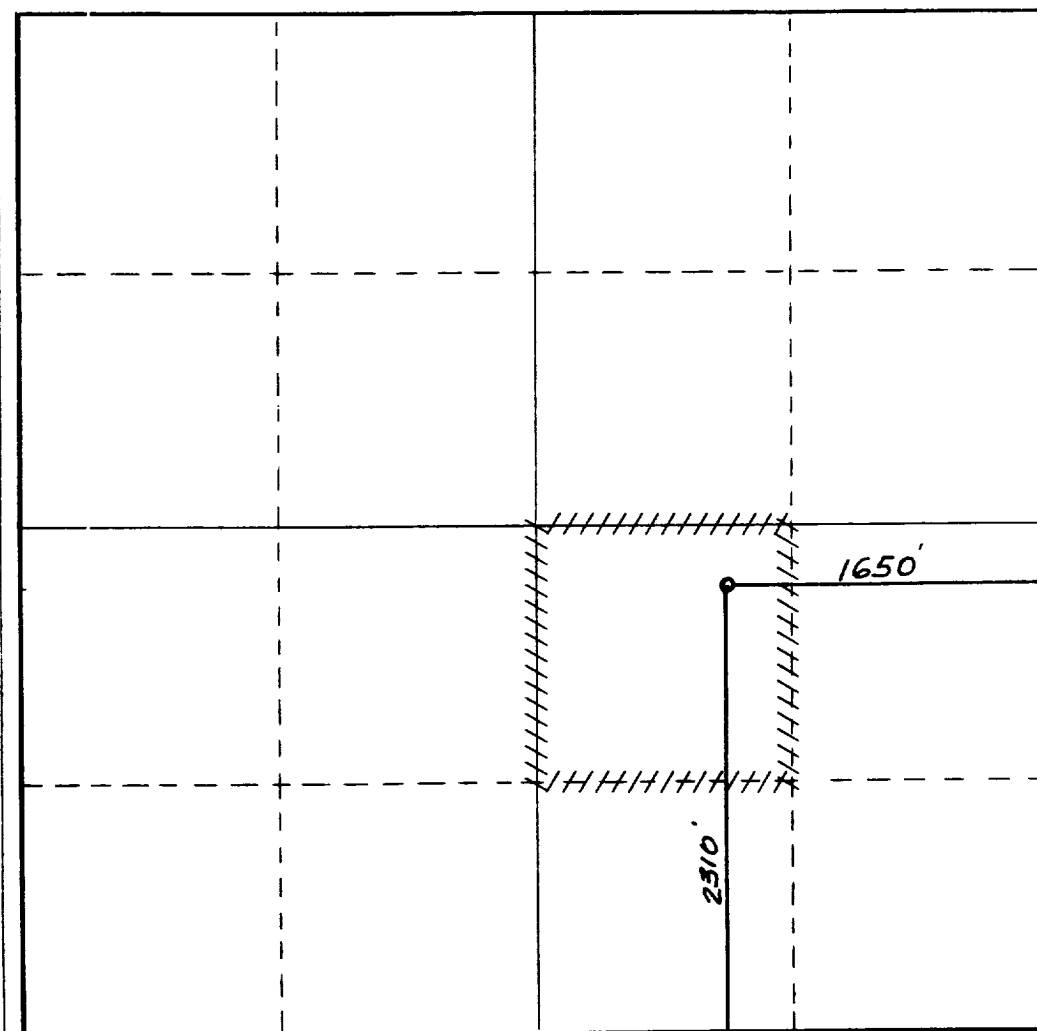
Operator <b>SIETE OIL AND GAS CORPORATION</b>			Lease <b>Blackhawk Federal</b>		Well No. <b>6</b>
Unit Letter <b>J</b>	Section <b>23</b>	Township <b>18 South</b>	Range <b>31 East</b>	County <b>Eddy</b>	
Actual Footage Location of Well: <b>2310</b> feet from the <b>South</b> line and <b>1650</b> feet from the <b>East</b> line					
Ground Level Elev. <b>3678.</b>	Producing Formation <b>Grayburg</b>		Pool <b>Shugart-Grayburg-San Andres</b>		Dedicated Acreage: <b>40</b> Acres

1. Outline the acreage dedicated to the subject well by colored pencil or hachure marks on the plat below.
2. If more than one lease is dedicated to the well, outline each and identify the ownership thereof (both as to working interest and royalty).
3. If more than one lease of different ownership is dedicated to the well, have the interests of all owners been consolidated by communitization, unitization, force-pooling, etc?

☐ Yes ☐ No If answer is "yes," type of consolidation \_\_\_\_\_

If answer is "no," list the owners and tract descriptions which have actually been consolidated. (Use reverse side of this form if necessary.) \_\_\_\_\_

No allowable will be assigned to the well until all interests have been consolidated (by communitization, unitization, forced-pooling, or otherwise) or until a non-standard unit, eliminating such interests, has been approved by the Commission.



**CERTIFICATION**

I hereby certify that the information contained herein is true and complete to the best of my knowledge and belief.

Name *Harold D. Justice*  
Position \_\_\_\_\_  
**V.P. Drilling & Production**  
Company  
**Siete Oil & Gas Corporation**  
Date  
**2/23/87**

I hereby certify that the well location shown on this plat was plotted from field notes of actual surveys made by me or under my supervision, and that the same are true and correct to the best of my knowledge and belief.

**DAN R. REDDY**  
**REGISTERED PROFESSIONAL ENGINEER AND SURVEYOR**  
**NEW MEXICO**  
**5412**

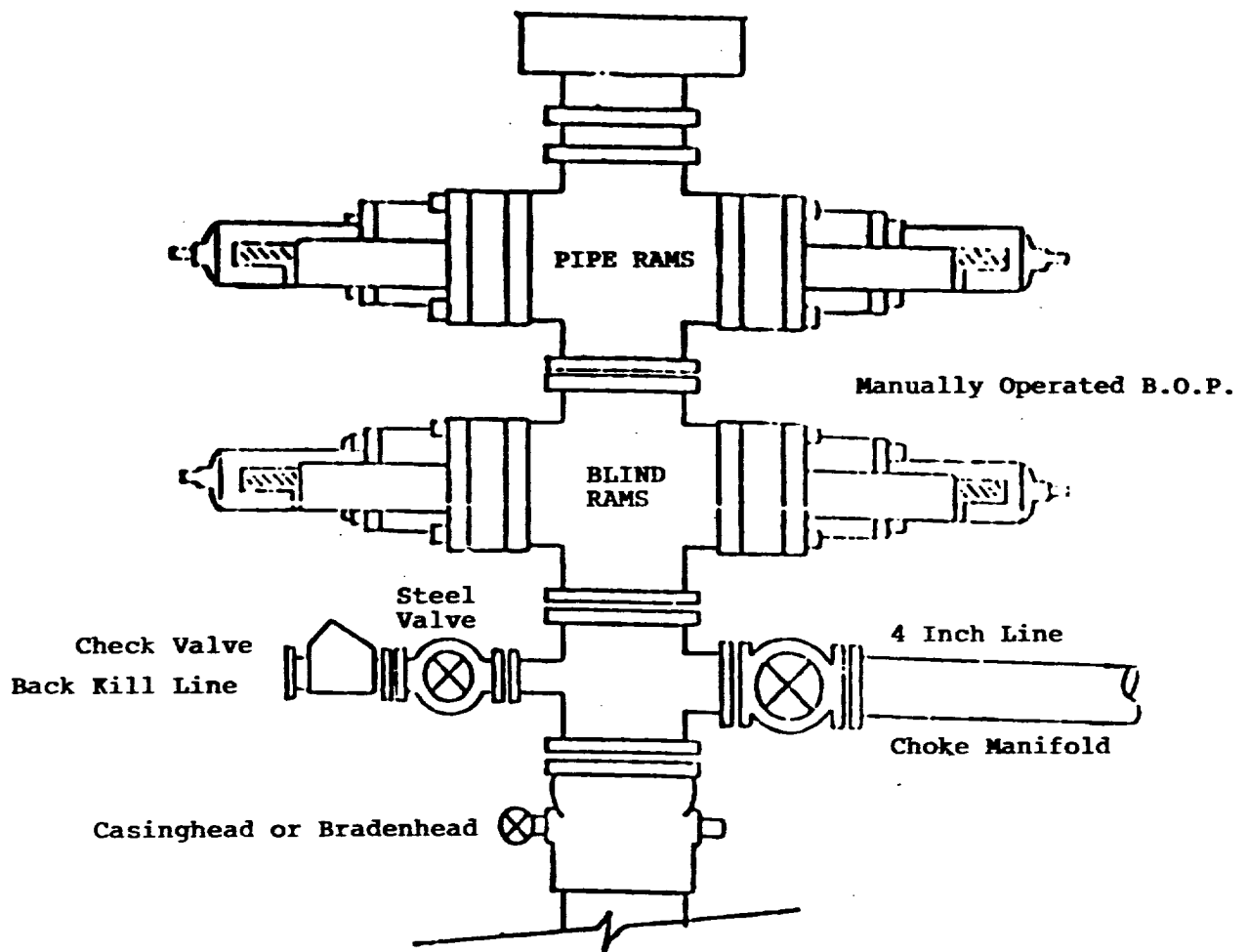
Date Surveyed  
**February 18, 1987**  
Registered Professional Engineer and/or Land Surveyor

*Dan R. Reddy*  
Certificate No.  
**NM PE&LS NO. 5412**

0 330 660 990 1320 1650 1980 2310 2640 2000 1500 1000 500 0

**BOP DIAGRAM**

**RATED 3000#**



SUPPLEMENTAL DRILLING DATA  
SIETE OIL AND GAS CORPORATION  
BLACKHAWK FEDERAL NO. 6  
2310' FSL & 1650' FEL  
Section 23: T18S, R31E  
Eddy County, New Mexico  
Lease Number: LC-065680

The following items supplement "Onshore Oil and Gas Order No. 1".

1. The geologic surface is quaternary.
2. The estimated geological marker tops:

B/Salt	2126'
Yates	2590
Queen	3470'
Grayburg	3945'
San Andres	4423'

3. Estimated depths to water, oil or gas:

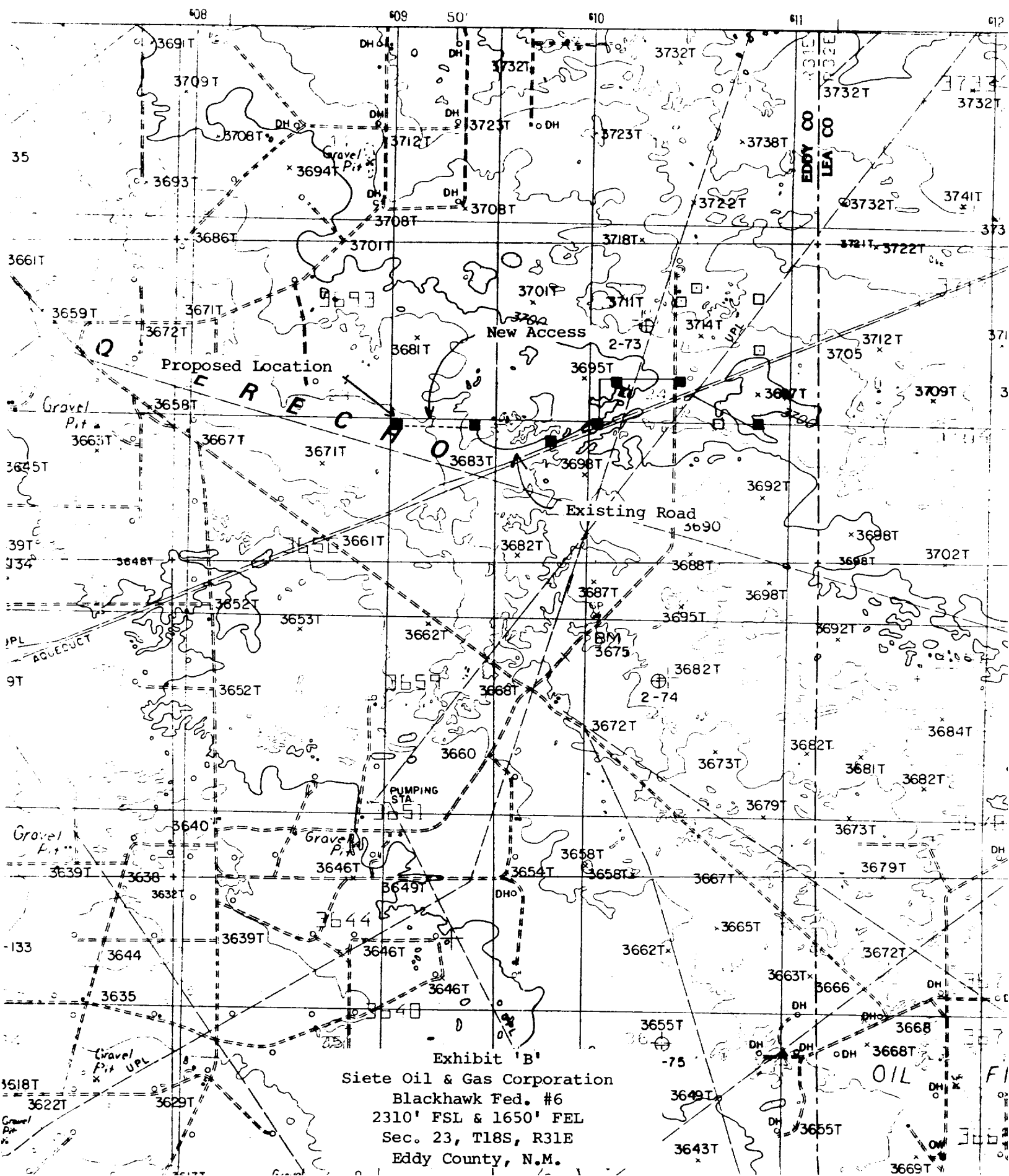
Water: 200'  
Oil or Gas: 4100'

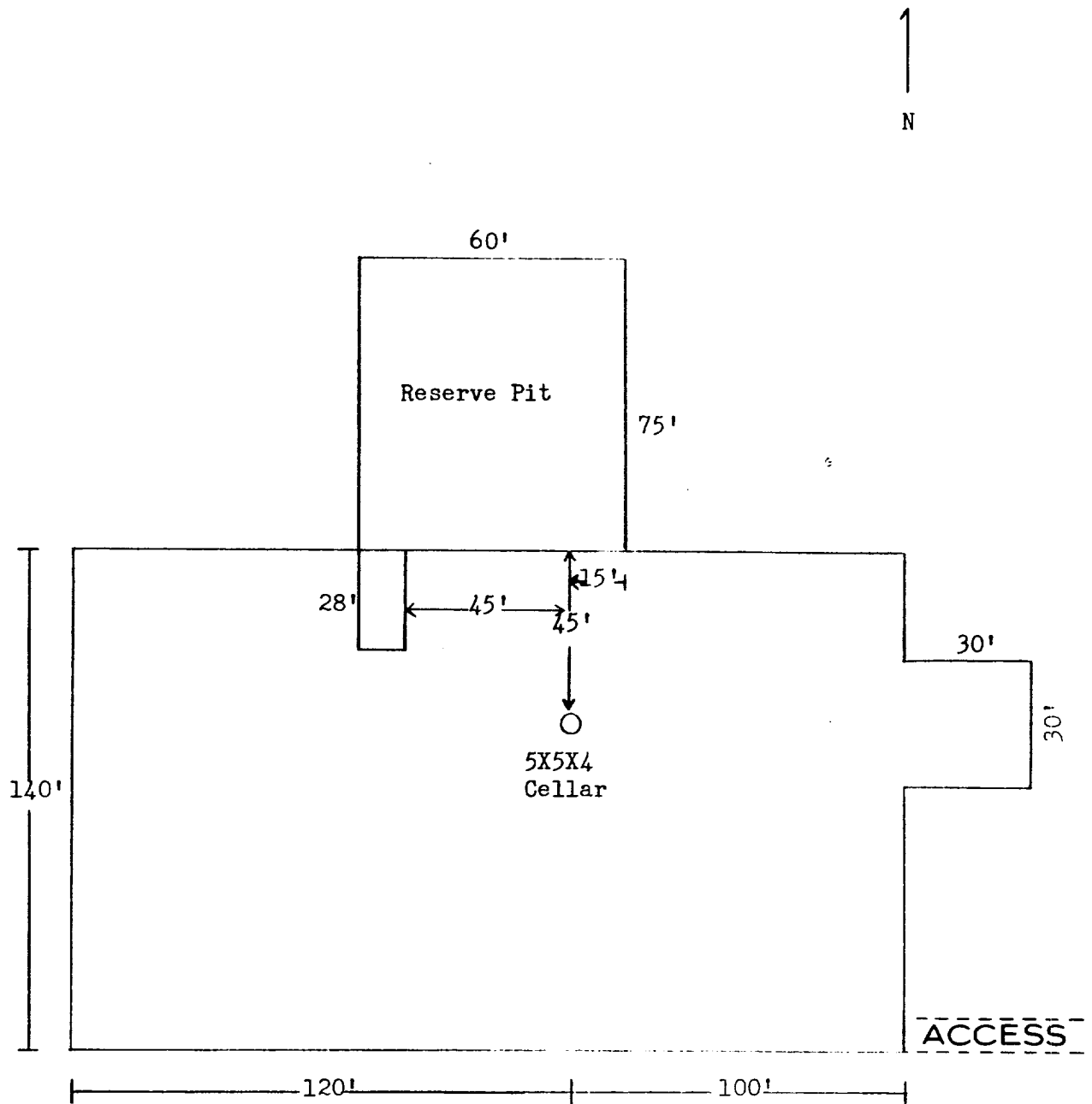
4. Proposed casing program:

<u>Size</u>	<u>Interval</u>	<u>Weight</u>	<u>Grade</u>	<u>Joint</u>	<u>New or Used</u>
8 5/8"	0 - 350'	24#	J-55	ST&C	New
5 1/2"	0 - 4500'	15.5#	J-55	ST&C	New

5. Pressure Control Equipment: The blowout preventer will be a double ram type preventer. A sketch is attached.
6. Mud Program: 0-350': Native mud adding gel and lime for sufficient viscosity to insure clean hole for running casing.  
  
350' - 4500': Drill out with native becoming brine at 4200' add starch and salt gel to maintain a viscosity of 32-38, mud weight 9.8 - 10.0#, viscosity at T.D. 40.0.
7. Auxiliary Equipment: A kelly cock will be installed on the rig floor while drilling operations are in progress.
8. Testing, Logging and Coring Programs: Possible drill stem tests and/or coring is not planned through the Grayburg Zone.  
  
Logging: Compensated Neutron - Formation Density - Gamma Ray - Caliper  
-- Dual Laterolog - RXO

9. No abnormal pressures or temperature zones are anticipated.
10. Anticipated starting date: Commence drilling operations March 10, 1987.





I&M Drilling Rig No. 1

Exhibit 'D'  
Siete Oil & Gas Corporation  
Blackhawk Fed. #6  
2310' FSL & 1650' FEL  
Sec. 23, T18S, R31E  
Eddy County, N.M.