

UNITED STATES
DEPARTMENT OF THE INTERIOR
BUREAU OF LAND MANAGEMENT

APPLICATION FOR PERMIT TO DRILL, DEEPEN, OR PLUG BACK

1a. TYPE OF WORK

DRILL ☒

DEEPEN ☐

PLUG BACK ☐

b. TYPE OF WELL

OIL
WELL ☒

GAS
WELL ☐

OTHER ☐

2. NAME OF OPERATOR

Harvey E. Yates Company

3. ADDRESS OF OPERATOR

P.O. Box 1933, Roswell, New Mexico 88201

4. LOCATION OF WELL (Report location clearly and in accordance with any State requirements.)

At surface
990' FNL & 1980' FEL

At proposed prod. zone

Same

14. DISTANCE IN MILES AND DIRECTION FROM NEAREST TOWN OR POST OFFICE*

12 Miles S.E. of Loco Hills, New Mexico

15. DISTANCE FROM PROPOSED*

LOCATION TO NEAREST
PROPERTY OR LEASE LINE, FT.
(Also to nearest drlg. unit line, if any)

660'

18. DISTANCE FROM PROPOSED LOCATION*

TO NEAREST WELL, DRILLING, COMPLETED,
OR APPLIED FOR, ON THIS LEASE, FT.

330' from DH

16. NO. OF ACRES IN LEASE

160

19. PROPOSED DEPTH

9200

17. NO. OF ACRES ASSIGNED
TO THIS WELL

40

20. ROTARY OR CABLE TOOLS

Rotary

21. ELEVATIONS (Show whether DF, RT, GR, etc.)

3752.2

22. APPROX. DATE WORK WILL START*

As soon as possible

23. PROPOSED CASING AND CEMENTING PROGRAM

SIZE OF HOLE	SIZE OF CASING	WEIGHT PER FOOT	SETTING DEPTH	QUANTITY OF CEMENT
17 1/2	13 3/8	54.5	350	Circl
11	8 5/8	24	2300	Circl
7 7/8	5 1/2	17	9200	600 ft. above pay

MUD PROGRAM:

0 - 350 Spud mud

350 - 2300 Brine Water

2300 - 9200 FW & Sweeps

IN ABOVE SPACE DESCRIBE PROPOSED PROGRAM: If proposal is to deepen or plug back, give data on present productive zone and proposed new productive zone. If proposal is to drill or deepen directionally, give pertinent data on subsurface locations and measured and true vertical depths. Give blowout preventer program, if any.

24.

SIGNED

N.M. Young

TITLE

Drilling Superintendent

DATE

February 17, 1987

(This space for Federal or State office use)

PERMIT NO.

APPROVAL DATE

APPROVED BY

TITLE

DATE

CONDITIONS OF APPROVAL, IF ANY:

*See Instructions On Reverse Side

Title 18 U.S.C. Section 1001, makes it a crime for any person knowingly and willfully to make to any department or agency of the United States any false, fictitious or fraudulent statements or representations as to any matter within its jurisdiction.

NEW MEXICO OIL CONSERVATION COMMISSION
WELL LOCATION AND ACREAGE DEDICATION PLAT

Form C-102
Supersedes C-128
Effective 11-65

All distances must be from the outer boundaries of the Section

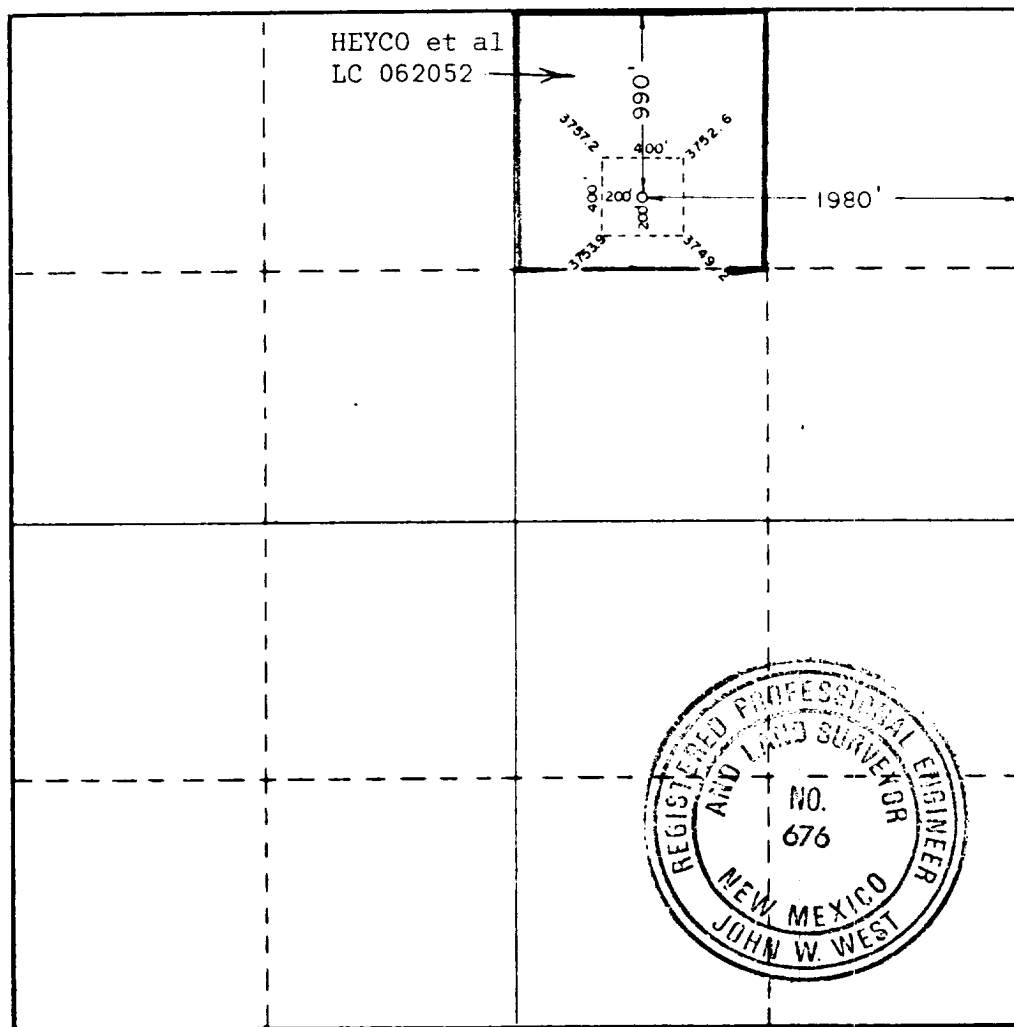
Operator HARVEY E. YATES COMPANY		Lease HUDSON 11 FEDERAL		Well No. 3
Init Letter B	Section 11	Township 18S	Range 31E	County EDDY
Actual Footage Location of Well: 990 feet from the NORTH line and 1980 feet from the EAST line				
Ground Level Elev. 3752.2	Producing Formation Bone Springs	Pool Wildcat <i>Wild. Tanager 1-5</i>	Dedicated Acreage: 40 Acres	

1. Outline the acreage dedicated to the subject well by colored pencil or hachure marks on the plat below.
2. If more than one lease is dedicated to the well, outline each and identify the ownership thereof (both as to working interest and royalty).
3. If more than one lease of different ownership is dedicated to the well, have the interests of all owners been consolidated by communitization, unitization, force-pooling, etc?

☐ Yes ☐ No If answer is "yes," type of consolidation _____

If answer is "no," list the owners and tract descriptions which have actually been consolidated. (Use reverse side of this form if necessary.) _____

No allowable will be assigned to the well until all interests have been consolidated (by communitization, unitization, forced-pooling, or otherwise) or until a non-standard unit, eliminating such interests, has been approved by the Commission.



CERTIFICATION

I hereby certify that the information contained herein is true and complete to the best of my knowledge and belief.

Name
N.M. Young
Position
Drilling Superintendent
Company
Harvey E. Yates Co.
Date
February 17, 1987

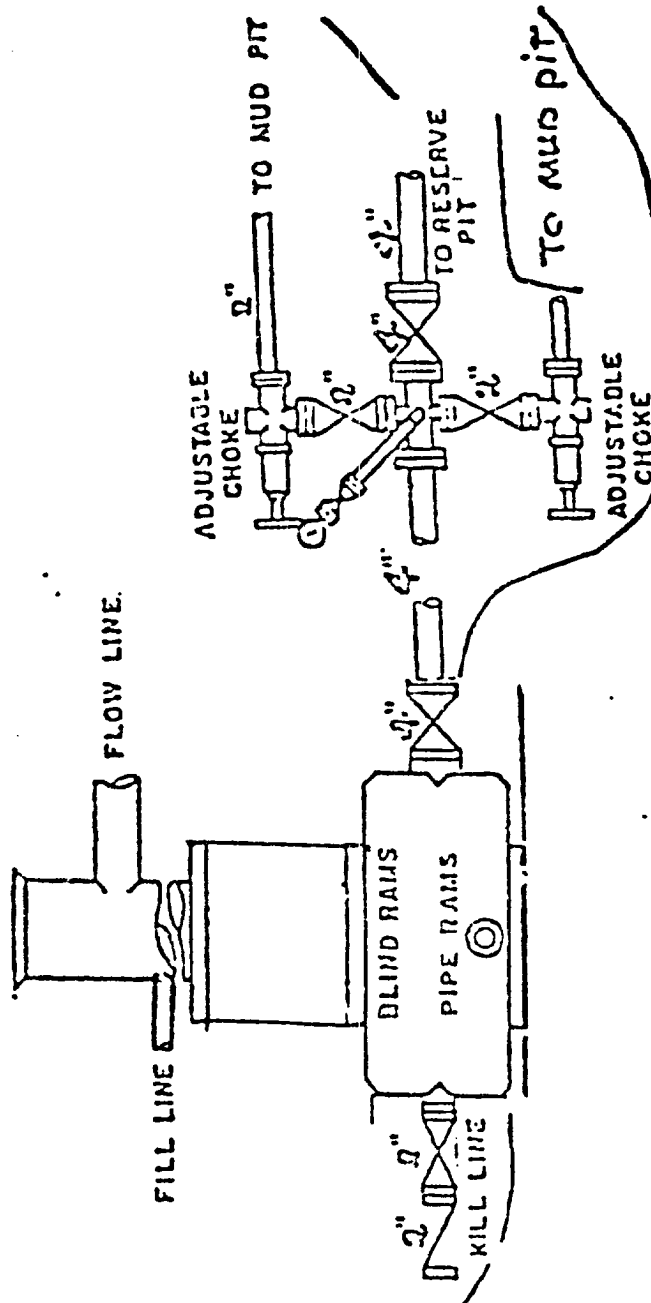
I hereby certify that the well location shown on this plat was plotted from field notes of actual surveys made by me or under my supervision, and that the same is true and correct to the best of my knowledge and belief.

Date Surveyed
JANUARY 28, 1987
Registered Professional Engineer and/or Land Surveyor

Certificate No. JOHN W. WEST, 676
RONALD J. EIDSON, 3239

EXHIBIT C

Harvey E. Yates Co.
Hudson 11 Federal 3
Eddy Co., New Mexico



900 Series

Application

HARVEY E. YATES COMPANY
Hudson 11 Federal #3
Section 11, T-18S, R-31E
Eddy County, New Mexico

In conjunction with Form 3160-3, Application for Permit to Drill the Subject well in Section 11, Township 18 South, Range 31 East, Eddy County, New Mexico, Harvey E. Yates Company submits the following ten items of pertinent information in accordance with Bureau of Land Management requirements:

1. The geologic surface formation is quaternary alluvium and bolson deposits and other surficial deposits.
2. The estimated tops of geologic markers are as follows:

Rustler	820'	Penrose	3610'
Yates	2270'	Grayburg	3900'
Seven Rivers	2690'	San Andres	4240'
Bowers	3138'	Bone springs	5660'
Queen	3385'	TD	9200'

3. We do not anticipate finding water but have listed the formation in which we anticipate finding oil or gas.

Bone Springs 5660'

4. Proposed casing program: See Form 3160-3
5. Pressure control equipment: See Exhibit C.
6. Mud program: See Form 3160-3.
7. Auxiliary equipment: Blowout preventer
8. Testing, logging and coring programs: Two possible DST's both in the Bone Springs. We are not planning to do any coring. Planned logs are DLL-Micro w/GR & Caliper, CN-Den w/ GR & Caliper.
9. No abnormal pressures or temperatures are anticipated.
10. Anticipated starting date: As soon as possible.

EXHIBIT A

Harvey E. Yates Co.
Hudson 11 Federal #3
Eddy Co., New Mexico

SICAL SURVEY
USCA NOB/NOAA
1978
1985
NERSP MERCATOR

NORTH

1000 0 1000 2000 3000 4000 5000 6000
MILES

SCALE 1:24 000

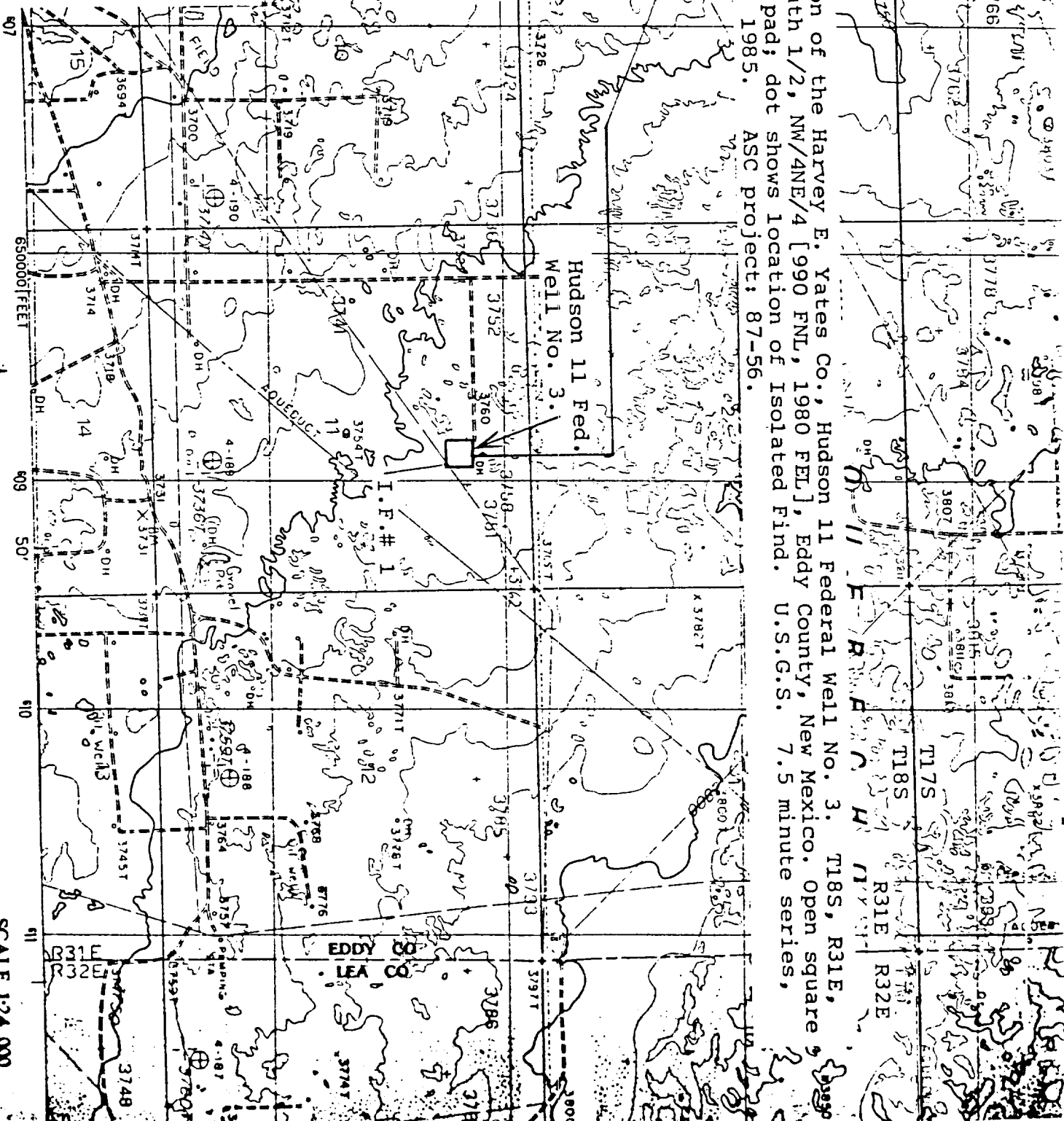


EXHIBIT D

Harvey E. Yates Co.
Hudson 11 Federal 3
Eddy Co., New Mexico

