

**N MEXICO OIL CONSERVATION COMMISSION
WELL LOCATION AND ACREAGE DEDICATION PLAT**

Form C-102
Supersedes C-128
Effective 1-1-65

All distances must be from the outer boundaries of the Section.

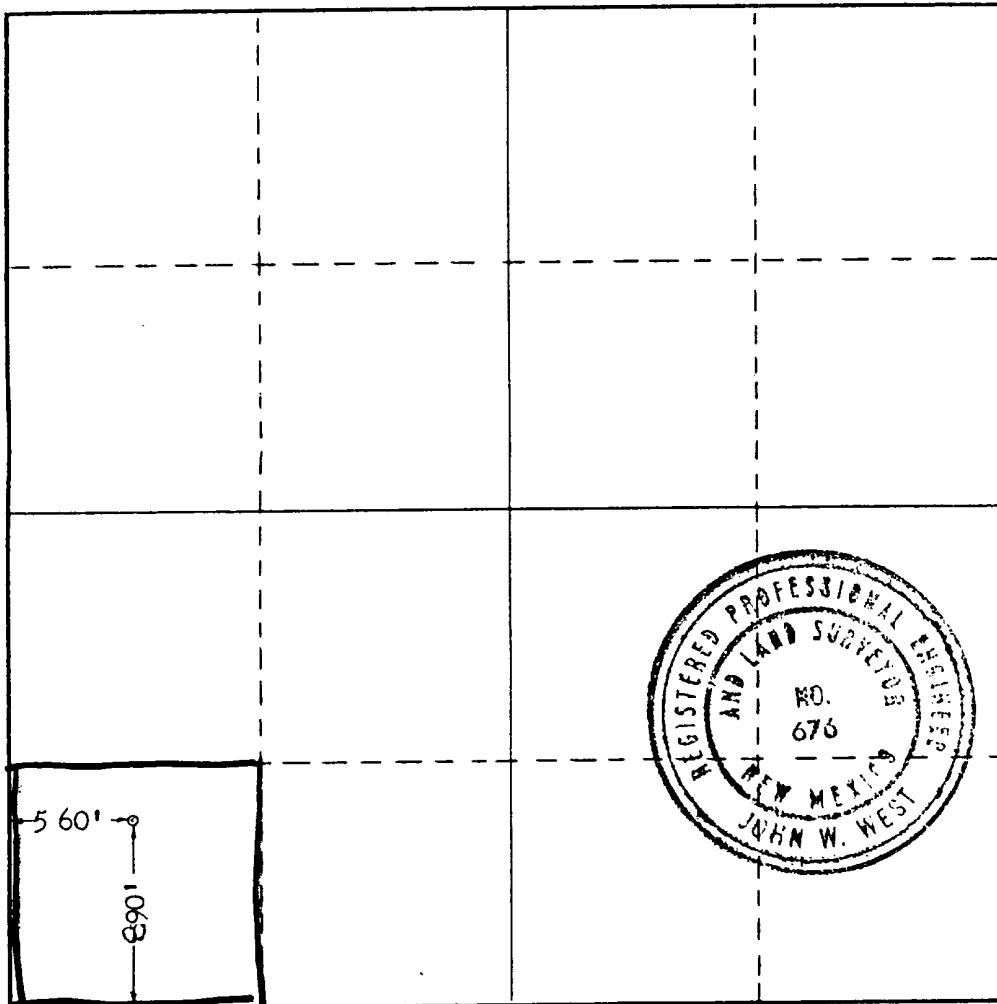
Operator METEX PIPE & SUPPLY			Lease Parkway - State		Well No. 1
Unit Letter M	Section 25	Township 19 South	Range 29 East	County Eddy	
Actual Footage Location of Well: <div style="display: flex; justify-content: space-between;"> 890 feet from the south line and 560 feet from the west line </div>					
Ground Level Elev. 3328	Producing Formation Delaware		Pool Wildcat		Dedicated Acreage: 40 Acres

1. Outline the acreage dedicated to the subject well by colored pencil or hatchure marks on the plat below.
2. If more than one lease is dedicated to the well, outline each and identify the ownership thereof (both as to working interest and royalty).
3. If more than one lease of different ownership is dedicated to the well, have the interests of all owners been consolidated by communitization, unitization, force-pooling, etc?

☐ Yes ☒ No If answer is "yes," type of consolidation _____

If answer is "no," list the owners and tract descriptions which have actually been consolidated. (Use reverse side of this form if necessary.) _____

No allowable will be assigned to the well until all interests have been consolidated (by communitization, unitization, forced-pooling, or otherwise) or until a non-standard unit, eliminating such interests, has been approved by the Commission.



CERTIFICATION

I hereby certify that the information contained herein is true and complete to the best of my knowledge and belief.

x *Martin B Muncy*

Name
Martin B. Muncy

Position
d/b/a Metex Pipe & Supply

Company

Date
8-17-87

I hereby certify that the well location shown on this plat was plotted from field notes of actual surveys made by me or under my supervision, and that the same is true and correct to the best of my knowledge and belief.

Date Surveyed
Aug 15, 1987

Registered Professional Engineer
and/or Land Surveyor

John W West

Certificate No. **JOHN W. WEST, 676**
RONALD J. EIDSON, 3239

30-015-25789

9-4-87

CD-CN-GAMMA RAY

O - 3938

Dual End - Gamma Ray

3941 - 3941