

UNITED STATES
DEPARTMENT OF THE INTERIOR
BUREAU OF LAND MANAGEMENT

APPLICATION FOR PERMIT TO DRILL, DEEPEN, OR PLUG BACK

1a. TYPE OF WORK
ARTESIAN WELL ☒ DRILL ☒ DEEPEN ☐ PLUG BACK ☐

b. TYPE OF WELL
OIL WELL ☒ GAS WELL ☐ OTHER ☐
SINGLE ZONE ☒ MULTIPLE ZONE ☐

2. NAME OF OPERATOR
Siete Oil & Gas Corporation

3. ADDRESS OF OPERATOR
P. O. Box 2523, Roswell, NM 88202-2523

4. LOCATION OF WELL (Report location clearly and in accordance with any State requirements.)
At surface 990' FSL, 330' FEL, SE $\frac{1}{4}$ SE $\frac{1}{4}$, Unit letter P
At proposed prod. zone

14. DISTANCE IN MILES AND DIRECTION FROM NEAREST TOWN OR POST OFFICE*
15.0 miles southeast of Loco Hills, NM

15. DISTANCE FROM PROPOSED*
LOCATION TO NEAREST
PROPERTY OR LEASE LINE, FT.
(Also to nearest drlg. unit line, if any) 330'

18. DISTANCE FROM PROPOSED LOCATION*
TO NEAREST WELL, DRILLING, COMPLETED,
OR APPLIED FOR, ON THIS LEASE, FT. 1320'

21. ELEVATIONS (Show whether DF, RT, GR, etc.)
3701' 6R

23. PROPOSED CASING AND CEMENTING PROGRAM

SIZE OF HOLE	SIZE OF CASING	WEIGHT PER FOOT	SETTING DEPTH	QUANTITY OF CEMENT
12 1/4"	8 5/8"	24.0#	350'	400 sx (circulate)
7 7/8"	5 1/2"	15.5#	5500'	2200 sx (circulate)

Selectively perforate and treat pay zones.

Attachments:

Survey plat (C-102)
Supplemental drilling data
Surface use plan

RECEIVED
AUG 18 11 35 AM '87
CANNONVILLE
AREA HEADQUARTERS

POST ID #1
9-11-87
API & NEWLOC.

IN ABOVE SPACE DESCRIBE PROPOSED PROGRAM: If proposal is to deepen or plug back, give data on present productive zone and proposed new productive zone. If proposal is to drill or deepen directionally, give pertinent data on subsurface locations and measured and true vertical depths. Give blowout preventer program, if any.

24. SIGNED David D. Justice TITLE V.P. Drilling & Production DATE August 17, 1987
(This space for Federal or State office use)

PERMIT NO. _____ APPROVAL DATE _____
APPROVED BY _____ TITLE _____ DATE 8/21/87
CONDITIONS OF APPROVAL, IF ANY:

*See Instructions On Reverse Side

Title 18 U.S.C. Section 1001, makes it a crime for any person knowingly and willfully to make to any department or agency of the United States any false, fictitious or fraudulent statements or representations as to any matter within its jurisdiction.

**MEXICO OIL CONSERVATION COMMISSION
WELL LOCATION AND ACREAGE DEDICATION PLAT**

Form C-102
Supersedes C-128
Effective 1-1-65

All distances must be from the outer boundaries of the Section.

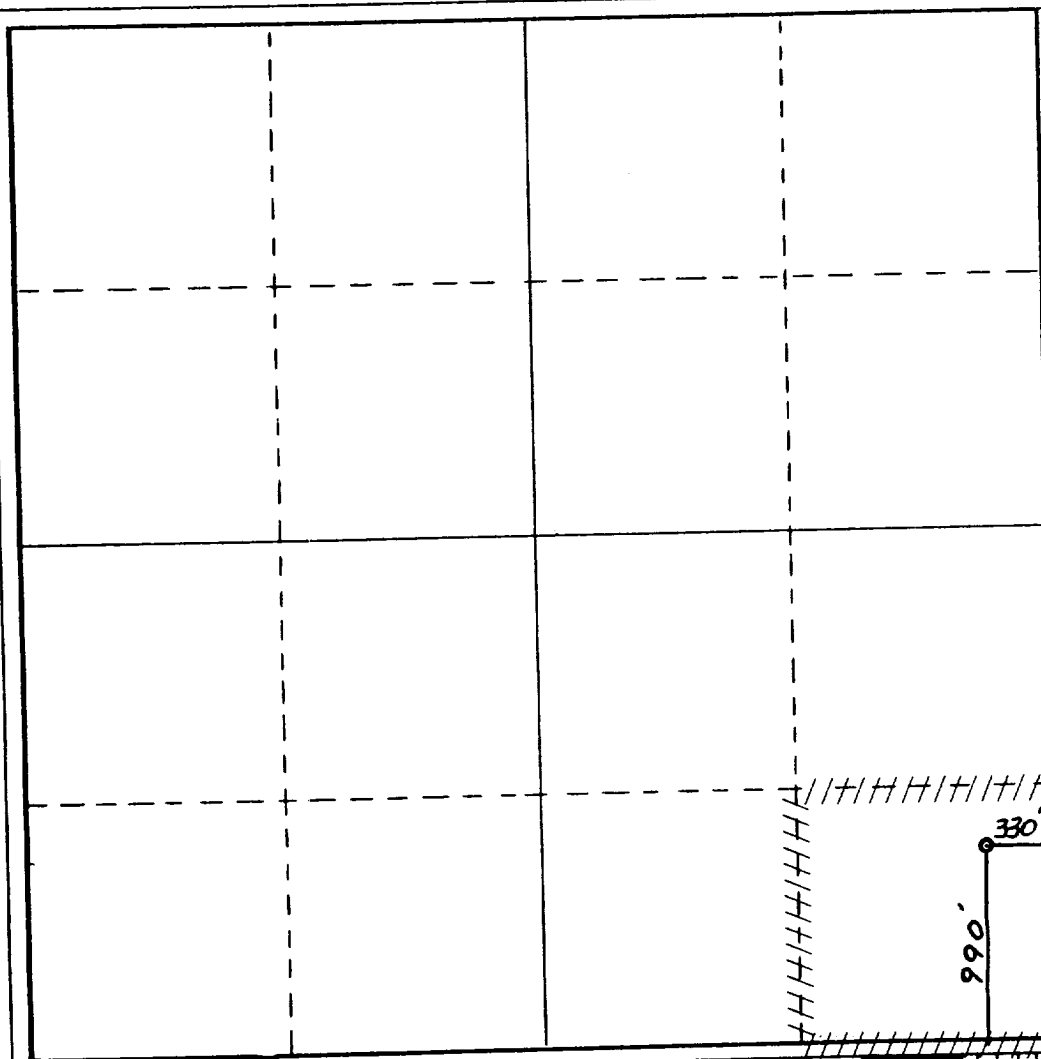
Operator SIETE OIL & GAS CORPORATION			Lease Geronimo Federal		Well No. 11
Unit Letter P	Section 24	Township 18 South	Range 31 East	County Eddy	
Actual Footage Location of Well: <div style="display: flex; justify-content: space-between;"> 990 feet from the South line and 330 feet from the East line </div>					
Ground Level Elev. 3701.	Producing Formation Delaware	Pool E. Shugart Delaware		Dedicated Acreage: 40 Acres	

1. Outline the acreage dedicated to the subject well by colored pencil or hachure marks on the plat below.
2. If more than one lease is dedicated to the well, outline each and identify the ownership thereof (both as to working interest and royalty).
3. If more than one lease of different ownership is dedicated to the well, have the interests of all owners been consolidated by communitization, unitization, force-pooling, etc?

☐ Yes ☐ No If answer is "yes," type of consolidation _____

If answer is "no," list the owners and tract descriptions which have actually been consolidated. (Use reverse side of this form if necessary.) _____

No allowable will be assigned to the well until all interests have been consolidated (by communitization, unitization, forced-pooling, or otherwise) or until a non-standard unit, eliminating such interests, has been approved by the Commission.



CERTIFICATION

I hereby certify that the information contained herein is true and complete to the best of my knowledge and belief.

Terry W. Franklin

Name

Terry W. Franklin

Position

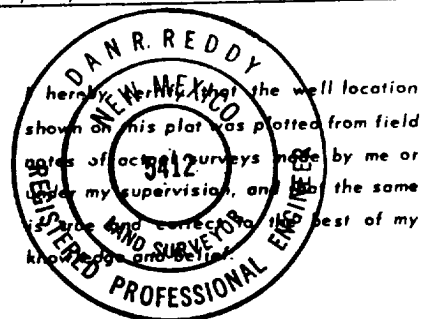
Agent

Company

Siete Oil and Gas Corp.

Date

8/17/87



Date Surveyed

August 13, 1987

Registered Professional Engineer
and/or Land Surveyor

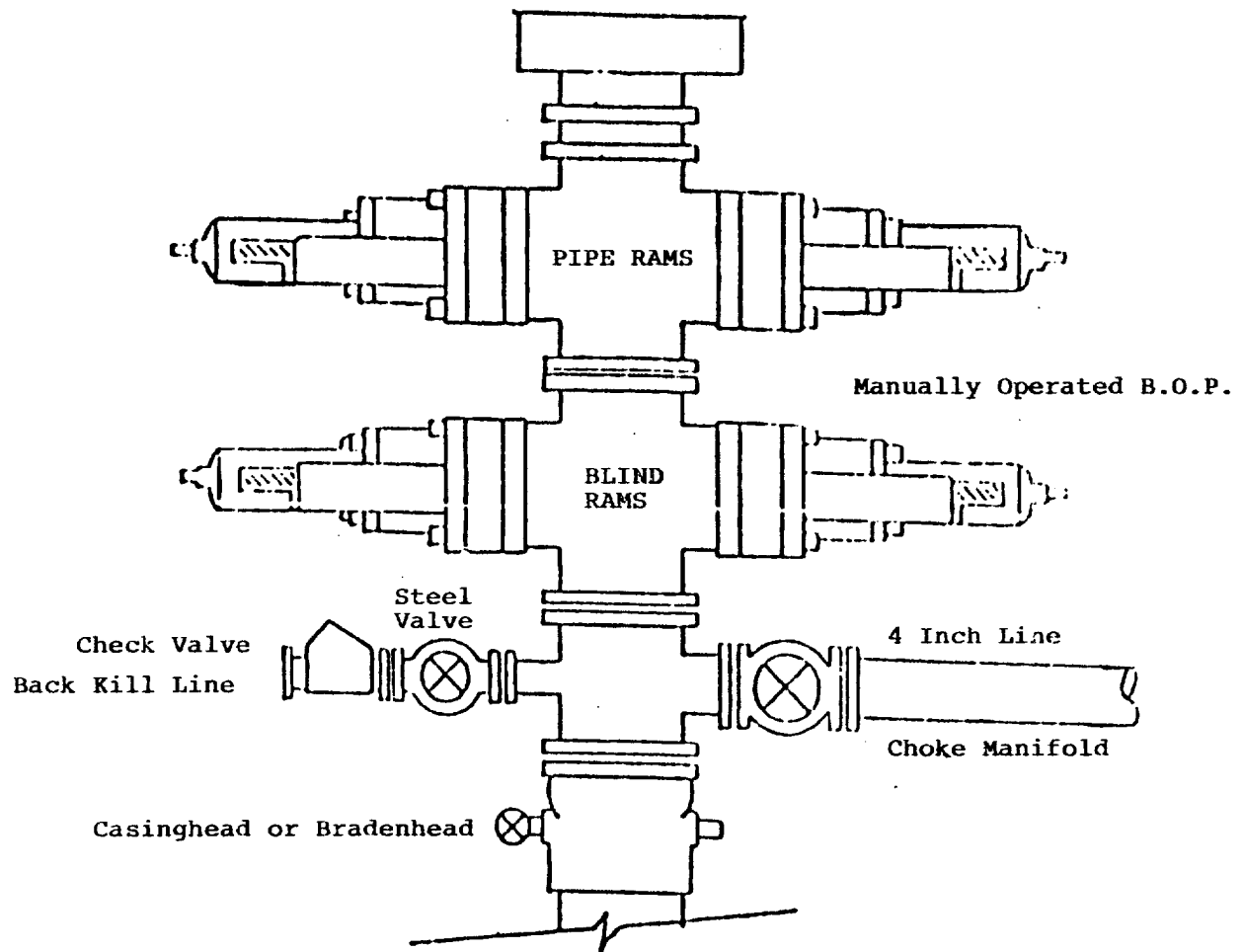
Dan R. Reddy

Certificate No.

NM PE&LS NO. 5412

0 330 660 990 1320 1650 1980 2310 2640 2000 1500 1000 500 0

BOP DIAGRAM
RATED 3000#



SUPPLEMENTAL DRILLING DATA
SIETE OIL AND GAS CORPORATION
GERONIMO FEDERAL NO. 11
990' FSL & 330' FEL
Section 24: T18S, R31E
Eddy County, New Mexico
Lease Number - NM-025777

The following items supplement "Onshore Oil and Gas Order No. 1":

1. The geologic surface is quaternary.
2. The estimated geological marker tops:

Yates	2400'
Queen	3500'
Grayburg	4010'
San Andres	4425'
Delaware	4650'

3. Estimated depths to water, oil or gas:

Water: 220'
Oil or Gas: 5000' - 5100'

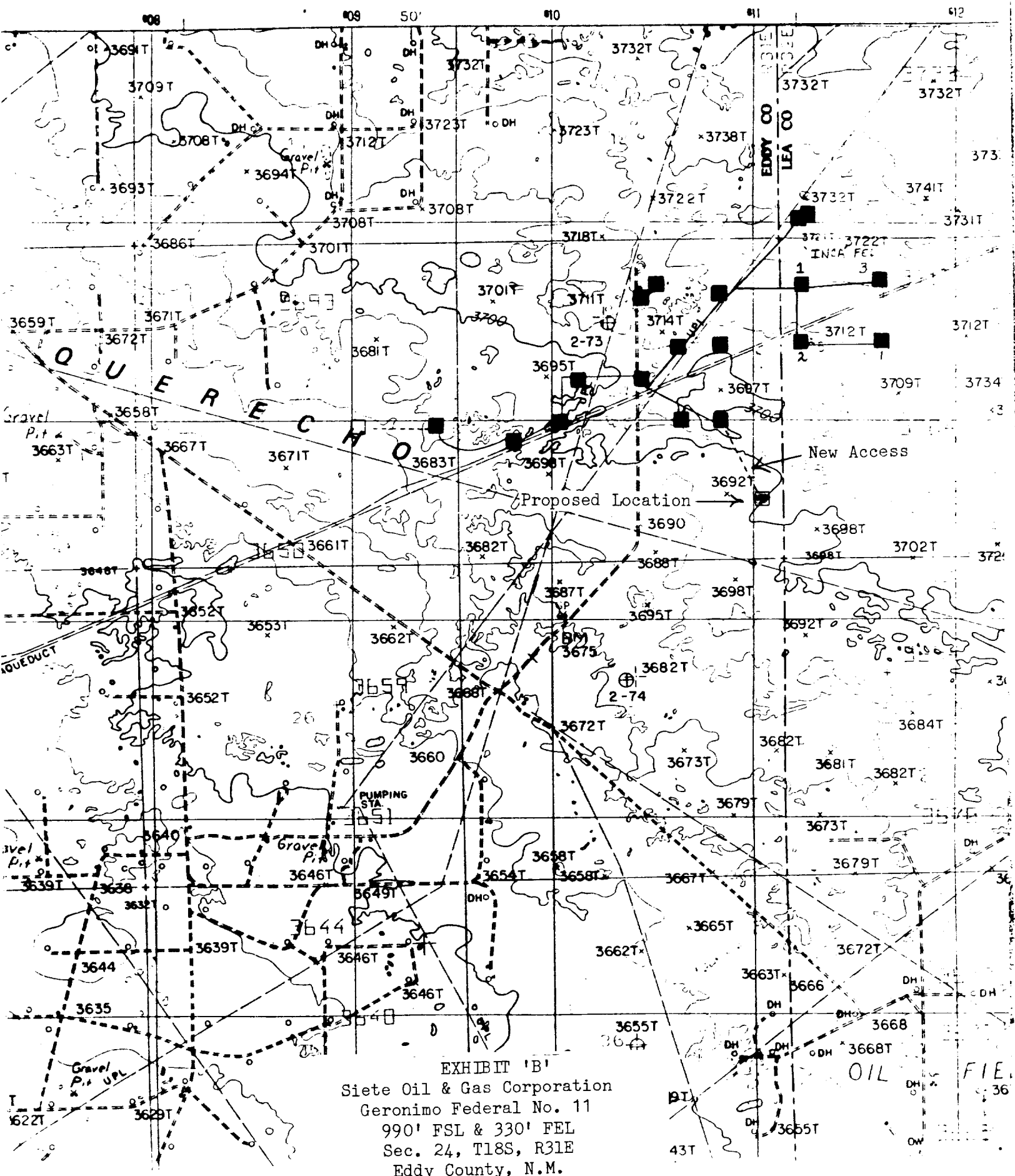
4. Proposed casing program:

<u>Size</u>	<u>Interval</u>	<u>Weight</u>	<u>Grade</u>	<u>Joint</u>	<u>New or Used</u>
8 5/8"	0 - 350'	24#	J-55	ST&C	New
5 1/2"	0 - 5500'	15.5#	J-55	ST&C	New

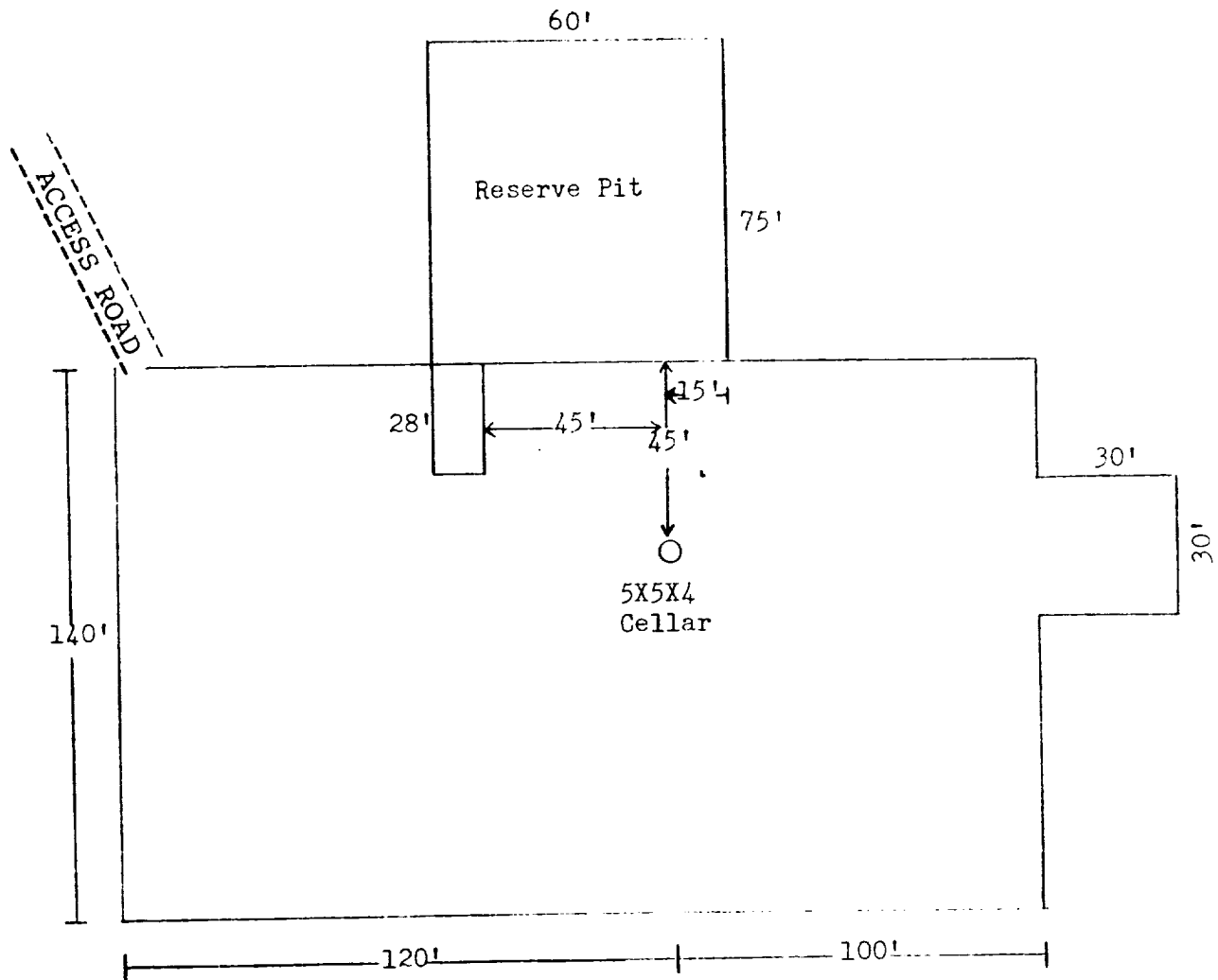
5. Pressure Control Equipment: The blowout preventer will be a double ram type preventer. A sketch is attached.
6. Mud Program: 0-350': Native mud adding gel and lime for sufficient viscosity to insure clean hole for running casing.

350' - 5500': Native brine, add lime for ph @10 for corrosion protection. At 4200' add starch and salt gel to establish a viscosity of 32-38, mud weight 9.8 - 10.0#/gallon, water loss of 20 cc or less.
7. Auxiliary Equipment: A kelly cock will be installed on the rig floor while drilling operations are in progress.
8. Testing, Logging and Coring Programs: Possible drill stem tests and/or coring is not planned through the Grayburg Zone.

Logging: Compensated Neutron - Formation Density - Gamma Ray - Caliper - Dual Laterolog - RXO
9. No abnormal pressures or temperature zones are anticipated.
10. Anticipated starting date: Commence drilling operations upon approval of the Permit to Drill.



1
N



I&M Drilling Rig No. 1

EXHIBIT 'D'
Siete Oil & Gas Corporation
Geronimo Federal No. 11
990' FSL & 330' FEL
Sec. 24, T18S, R31E