

UNITED STATES
DEPARTMENT OF THE INTERIOR
GEOLOGICAL SURVEYMAY OIL & GAS COMMISSION
Dagger DD
Artesia, NM 88210

30-015-25809

APPLICATION FOR PERMIT TO DRILL, DEEPEN, OR PLUG BACK

1a. TYPE OF WORK

DRILL ☒DEEPEN ☐PLUG BACK ☐

b. TYPE OF WELL

OIL
WELL ☒GAS
WELL ☐OTHER ☐SINGLE
ZONE ☐MULTIPLE
ZONE ☐

2. NAME OF OPERATOR

CONOCO INC.

RECEIVED

3. ADDRESS OF OPERATOR

P. O. Box 460, Hobbs, N.M. 88240

4. LOCATION OF WELL (Report location clearly and in accordance with any State requirements.)

At surface

990' FNL & 1980' FEL

At proposed prod. zone

14. DISTANCE IN MILES AND DIRECTION FROM NEAREST TOWN OR POST OFFICE*

15. DISTANCE FROM PROPOSED*

LOCATION TO NEAREST
PROPERTY OR LEASE LINE, FT.
(Also to nearest drlg. unit line, if any)

18. DISTANCE FROM PROPOSED LOCATION*

TO NEAREST WELL, DRILLING, COMPLETED,
OR APPLIED FOR, ON THIS LEASE, FT.

16. NO. OF ACRES IN LEASE

562.68

19. PROPOSED DEPTH

8100'

17. NO. OF ACRES ASSIGNED
TO THIS WELL

160

20. ROTARY OR CABLE TOOLS

Rotary

21. ELEVATIONS (Show whether DF, RT, GR, etc.)

3553' 3554.5

22. APPROX. DATE WORK WILL START*

October 1, 1987

23.

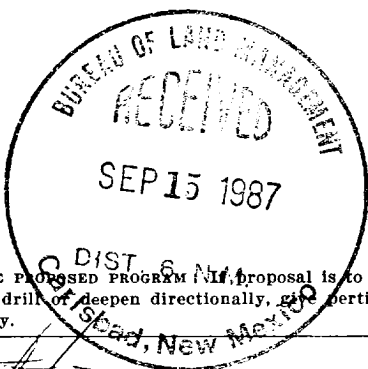
PROPOSED CASING AND CEMENTING PROGRAM

SIZE OF HOLE	SIZE OF CASING	WEIGHT PER FOOT	SETTING DEPTH	QUANTITY OF CEMENT
12 1/4"	9 5/8"	36#	1250'	350 SXS CLASS "C" & 400 SXS last circ. - 1st stage
7 7/8"	5 1/2"	17#	8100'	750 SXS CLASS "H" & "C" - 1st stage
				950 SXS CLASS "C" & lite - 2nd stage - circ

It is proposed to drill a straight hole to a TD of 8100' and complete as a single Cisco oil well. Attached is an Attachment to Form 9-331 C, Form C-102, and a Surface Use Plan.

RECEIVED

SEP 11 10 58 AM '87

CARLSBAD REGIONAL
AREA HEADQUARTERSPOST 10#
NL & API
9-25-87AUG 25 10 56 AM '87
CARLSBAD REGIONAL
AREA HEADQUARTERS

RECEIVED

IN ABOVE SPACE DESCRIBE PROPOSED PROGRAM. If proposal is to deepen or plug back, give data on present productive zone and proposed new productive zone. If proposal is to drill or deepen directionally, give pertinent data on subsurface locations and measured and true vertical depths. Give blowout preventer program, if any.

24.

SIGNED Arthur D. FinneyTITLE Administrative SupervisorDATE 8-24-87

(This space for Federal or State office use)

PERMIT NO. _____

APPROVAL DATE _____

APPROVED BY _____

TITLE _____

DATE 9-23-87

CONDITIONS OF APPROVAL, IF ANY:

*See Instructions On Reverse Side

BLM-Carlsbad (6) File

NEW MEXICO OIL CONSERVATION COMMISSION
WELL LOCATION AND ACREAGE DEDICATION PLAT

Form C-102
Supersedes C-128
Effective 1-1-65

All distances must be from the outer boundaries of the Section

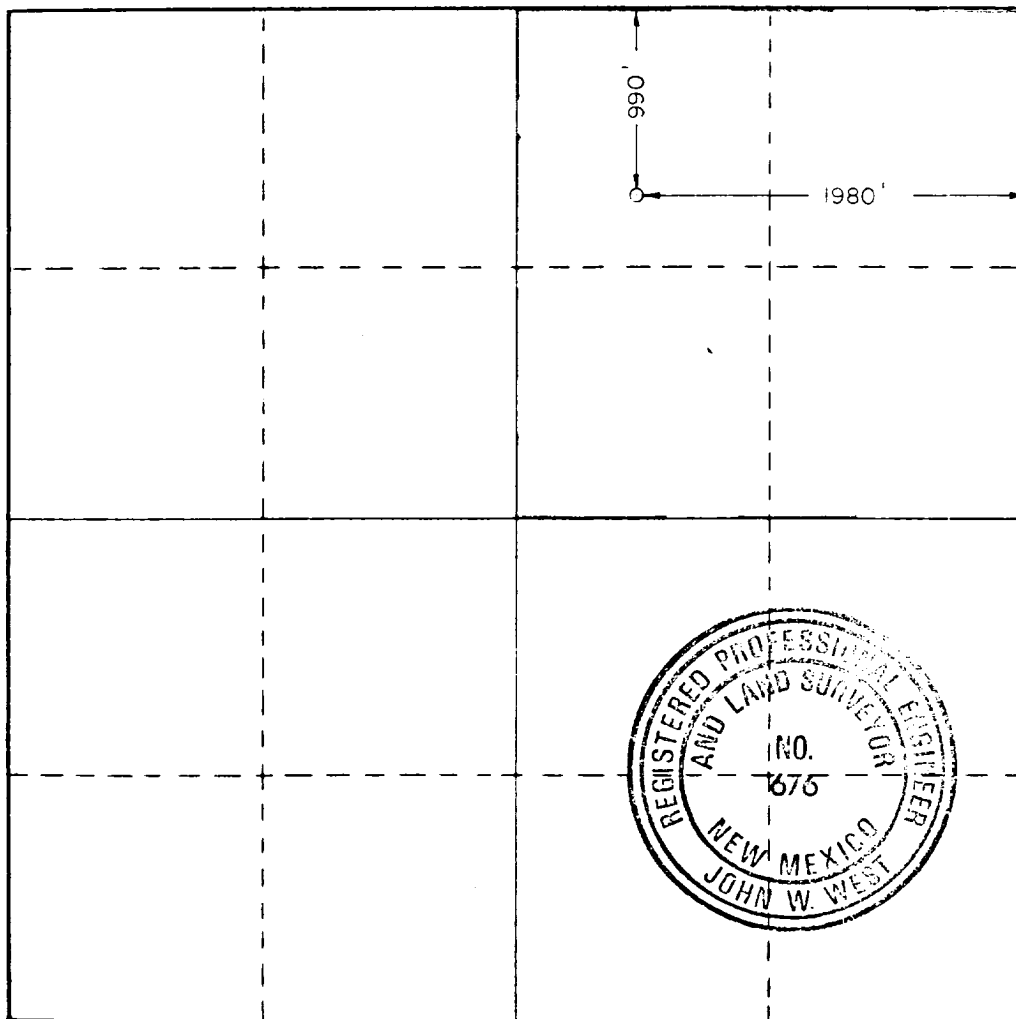
Operator Conoco Inc.		Lease Dagger Draw		Well No. #5
Unit Letter B	Section 30	Township 19 South	Range 25 East	County Eddy
Actual Footage Location of Well: 990 feet from the North line and 1980 feet from the East line				
Ground Level Elev. 3554.5	Producing Formation CISCO	Pool North Dagger Draw Penn	Dedicated Acreage: 160 Acres	

1. Outline the acreage dedicated to the subject well by colored pencil or hachure marks on the plat below.
2. If more than one lease is dedicated to the well, outline each and identify the ownership thereof (both as to working interest and royalty).
3. If more than one lease of different ownership is dedicated to the well, have the interests of all owners been consolidated by communitization, unitization, force-pooling, etc?

☐ Yes ☐ No If answer is "yes," type of consolidation _____

If answer is "no," list the owners and tract descriptions which have actually been consolidated. (Use reverse side of this form if necessary.) _____

No allowable will be assigned to the well until all interests have been consolidated (by communitization, unitization, forced-pooling, or otherwise) or until a non-standard unit, eliminating such interests, has been approved by the Commission.



CERTIFICATION

I hereby certify that the information contained herein is true and complete to the best of my knowledge and belief.

Name
John W. West DE FINNEY

Position
Administrative Supervisor

Company
CONOCO INC.

Date
August 13, 1987

I hereby certify that the well location shown on this plat was plotted from field notes of actual surveys made by me or under my supervision, and that the same is true and correct to the best of my knowledge and belief.

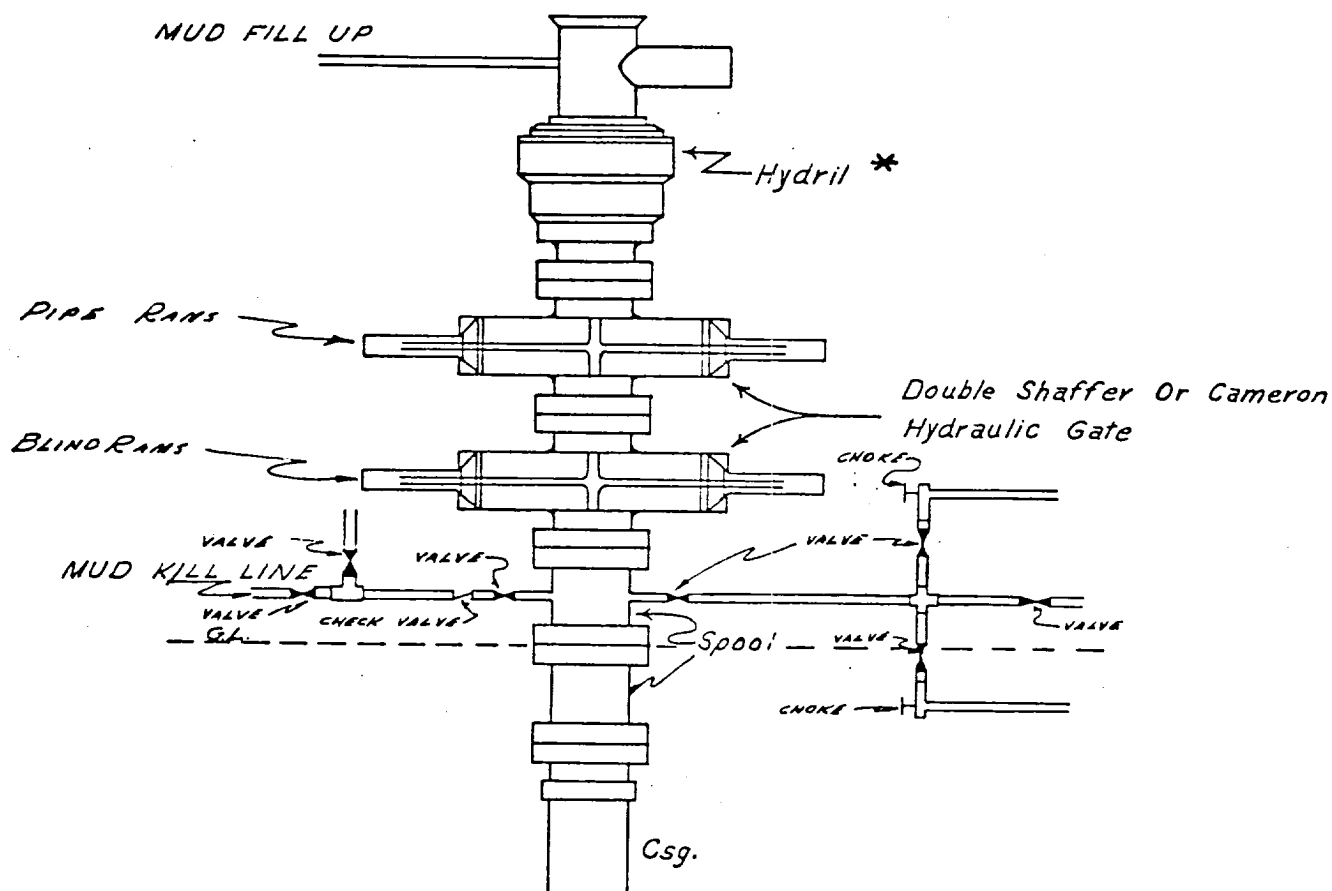
Date Surveyed
January 21, 1987

Registered Professional Engineer and/or Land Surveyor

Certificate No. JOHN W. WEST, 676
RONALD J. EIDSON, 3239

CONOCO INC.

Blow-out Preventer Specifications



NOTE:

Manual and Hydraulic controls with closing unit no less than 75' from well head.
Remote controls on rig floor.

*

DUE TO SUBSTRUCTURE CLEARANCE, HYDRIL
MAY OR MAY NOT BE USED.

ATTACHMENT TO FORM 9-331 C
APPLICATION FOR PERMIT TO DRILL

Conoco Inc.
Dagger Draw No. 5 NM-2416
Section 30-19S-25E
Eddy County, New Mexico

1. The estimated tops of important geologic markers are shown on the attached Proposed Well Plan Outline.
2. The estimated depths at which anticipated water, oil, gas or other mineral-bearing formations to be encountered are shown on the attached Proposed Well Plan Outline.
3. A drawing of an API Series 900 Blowout Preventer Specification is attached. Pipe rams and blinds will be checked to the working pressure of the stack or 70% of the interval yield strength of casing, whichever is less.
4. The proposed casing program is as follows:

0'-1250': 9-5/8", 36#, K-55, ST&C
0'-8100': 5-1/2", 17#, K-55 LT&C
5. The proposed mud programs are as follows:

0'-550': 8.5-8.7 Fresh Gel/Lime
550'-1250': 8.3 - 8.7 Fresh water
1250'-7000': 8.8 - 9.2 Cut Brine
7000'-8100': 9.0 - 9.4 Salt Gel/Starch
6. Run open-hole logs from 1250'-8100'. The log suite will include the following: 1) GR-CNL-FDC-CAL, 2) GR-DLL-MSFL-CAL. A temperature survey will be run to determine the top of cement on each casing string when cement is not circulated.
7. Possible water flows from 500'-3062'. Possible H₂S at 5700' through 7500'. Oil and gas possible from 5000' to TD.
8. Anticipated starting date is October 1, 1987 with a duration of approximately 30 days.

PROPOSED WELL PLAN OUTLINE

WELL NAME: Dagger Draw No. 5

COUNTY: Eddy

STATE: NM

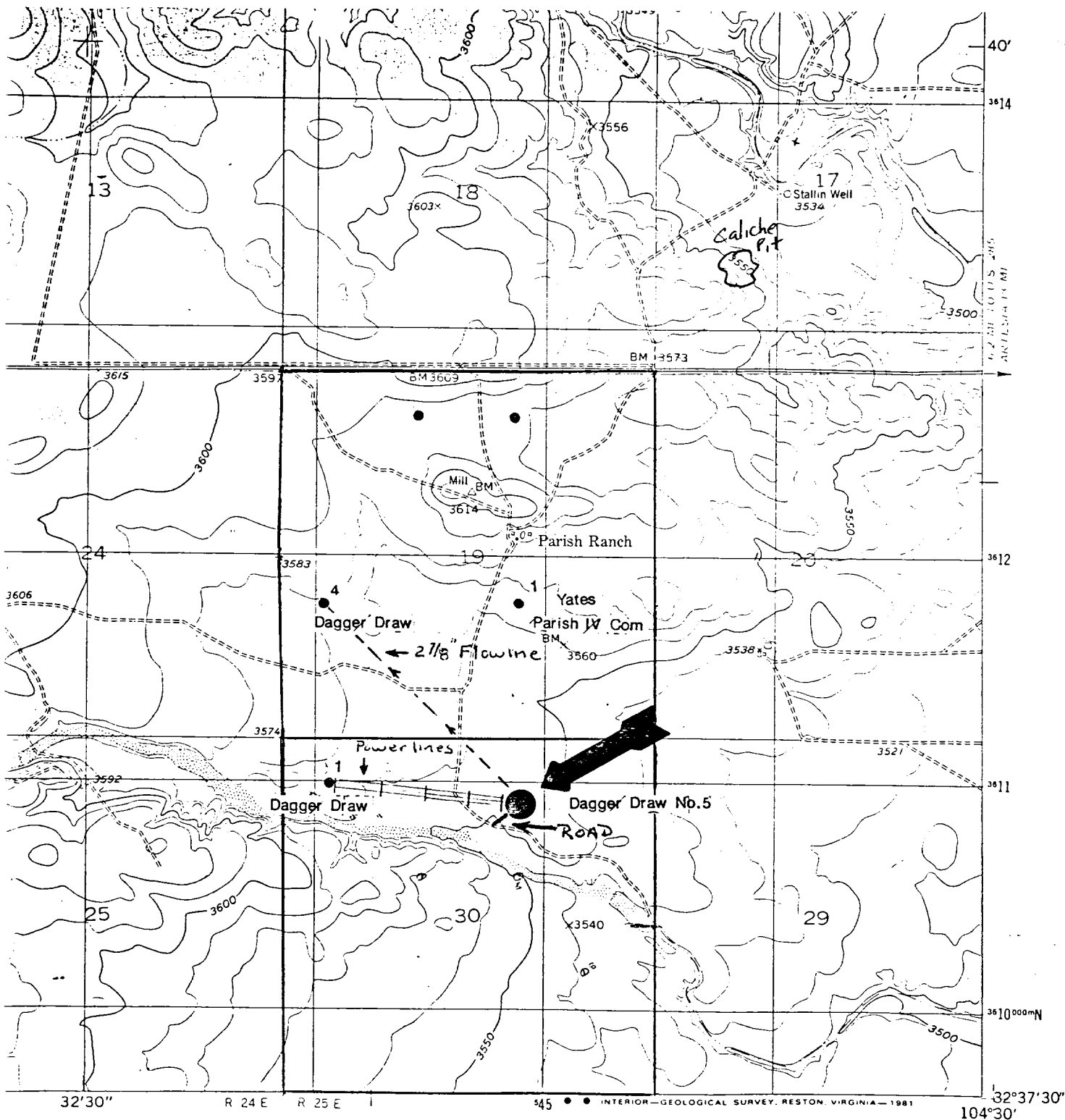
LOCATION: 990' FNL & 1980' FEL

EST. KB: 3562'

Section 30, T19S, R25E

EST. GL: 3550'

[illegible]



--- Flowline
 MILE Powerline

Distances

D.D.5 → D.D.4 ≈ 3973' (3/4 mile)

D.D.5 → D.D.1 ≈ 2660' (1/2 mile)

ROAD CLASSIFICATION

Light-duty Unimproved dirt

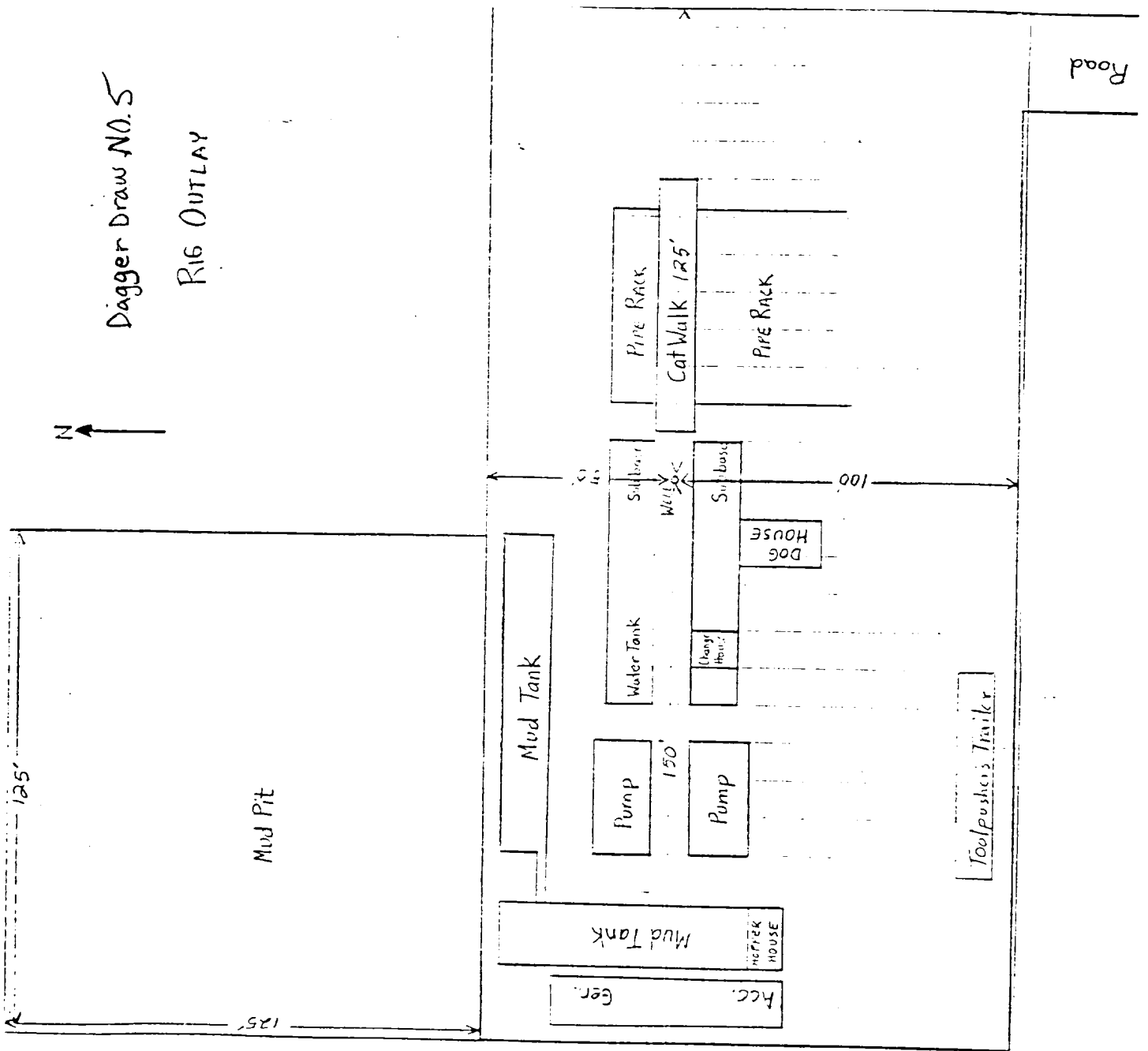


PARISH RANCH, N. MEX.
 N3237.5-W10430/7.5

1956
 PHOTOINSPECTED 1975
 DMA 5049 II NE-SERIES V881

Exhibit "B" 01-1096

(SEVEN RIVERS)
 5149 III SW



Dagger Draw NO. 5

RIG OUTLAY

Exhibit C