

Drawer DD  
Artesia, NM 88210SUBMIT IN TRI LATE\*  
(Other instructions on  
reverse side)Form approved.  
Budget Bureau No. 42-R1425.UNITED STATES  
DEPARTMENT OF THE INTERIOR  
GEOLOGICAL SURVEY

## APPLICATION FOR PERMIT TO DRILL, DEEPEN, OR PLUG BACK

## 1a. TYPE OF WORK

DRILL ☒DEEPEN ☐PLUG BACK ☒

## b. TYPE OF WELL

OIL  
WELL ☒GAS  
WELL ☐

OTHER

SINGLE  
ZONE ☐MULTIPLE  
ZONE ☐

## 2. NAME OF OPERATOR

Westall &amp; Mask

## 3. ADDRESS OF OPERATOR

P.O. Box 234 Loco Hills, New Mexico 88255

## 4. LOCATION OF WELL (Report location clearly and in accordance with any State requirements.)\*

At surface

2200' FSL &amp; 990' FEL

At proposed prod. zone

## 14. DISTANCE IN MILES AND DIRECTION FROM NEAREST TOWN OR POST OFFICE\*

15 miles SE of Loco Hills, NM

## 15. DISTANCE FROM PROPOSED\*

LOCATION TO NEAREST  
PROPERTY OR LEASE LINE, FT.  
(Also to nearest drlg. unit line, if any)

## 16. NO. OF ACRES IN LEASE

160

17. NO. OF ACRES ASSIGNED  
TO THIS WELL

40

## 18. DISTANCE FROM PROPOSED LOCATION\*

TO NEAREST WELL, DRILLING, COMPLETED,  
OR APPLIED FOR, ON THIS LEASE, FT.

## 19. PROPOSED DEPTH

4500'

## 20. ROTARY OR CABLE TOOLS

Rotary

## 21. ELEVATIONS (Show whether DF, RT, GR, etc.)

3701 GR

## 22. APPROX. DATE WORK WILL START\*

ASAP

## 23. PROPOSED CASING AND CEMENTING PROGRAM

SIZE OF HOLE	SIZE OF CASING	WEIGHT PER FOOT	SETTING DEPTH	QUANTITY OF CEMENT
12 1/4"	8 5/8"	24.5#	450'	Circulate
6 3/4"	4 1/2"	9.5#	4500'	700 sxs Circulate

We Propose to drill and test the Grayburg and intermediate formations. Approximately 450' of 8 5/8" casing will be set. Fresh water will be used to drill the surface and brine water will be used to drill the production hole. 4 1/2" production casing will be run, circulated and perforated for production.

IN ABOVE SPACE DESCRIBE PROPOSED PROGRAM: If proposal is to deepen or plug back, give data on present productive zone and proposed new productive zone. If proposal is to drill or deepen directionally, give pertinent data on subsurface locations and measured and true vertical depths. Give blowout preventer program, if any.

24.

SIGNED

TITLE

Operator

DATE

8-26-87

(This space for Federal or State office use)

PERMIT NO.

APPROVAL DATE

APPROVED BY

TITLE

DATE

9-24-87

CONDITIONS OF APPROVAL, IF ANY:

Post ID #1  
NL & API  
9-30-87

All distances must be from the outer boundaries of the Section.

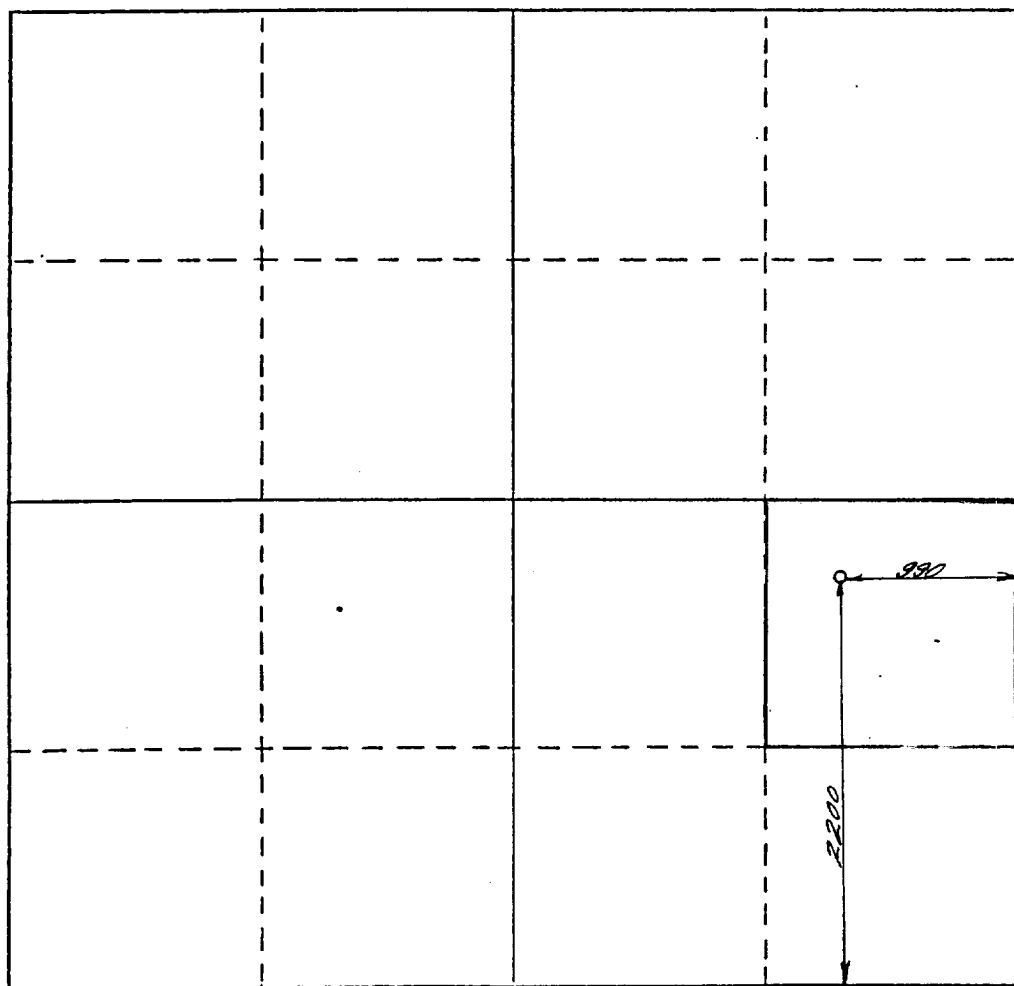
Operator <b>Westall &amp; Mask</b>		Lease <b>Keohane Federal</b>		Well No. <b>3</b>	
Unit, Letter <b>I</b>	Section <b>24</b>	Township <b>18 South</b>	Range <b>31 East</b>	County <b>Eddy</b>	
Actual Footage Location of Well: <b>2200</b> feet from the <b>South</b> line and <b>990</b> feet from the <b>East</b> line					
Ground Level Elev. <b>3701</b>	Producing Formation <b>Y-TRVS-Q-G</b>		Pool <b>Shugart</b>		Dedicated Acreage: <b>40</b> acres

1. Outline the acreage dedicated to the subject well by colored pencil or hatchure marks on the plat below.
2. If more than one lease is dedicated to the well, outline each and identify the ownership thereof (both as to working interest and royalty).
3. If more than one lease of different ownership is dedicated to the well, have the interests of all owners been consolidated by communitization, unitization, force-pooling, etc?

☐ Yes ☐ No If answer is "yes," type of consolidation \_\_\_\_\_

If answer is "no," list the owners and tract descriptions which have actually been consolidated. (Use reverse side of this form if necessary.) \_\_\_\_\_

No allowable will be assigned to the well until all interests have been consolidated (by communitization, unitization, forced-pooling, or otherwise) or until a non-standard unit, eliminating such interests, has been approved by the Division.



CERTIFICATION

I hereby certify that the information contained herein is true and complete to the best of my knowledge and belief.

Name **Y R Westall**  
Position **Operator**

Company **Westall & Mask**

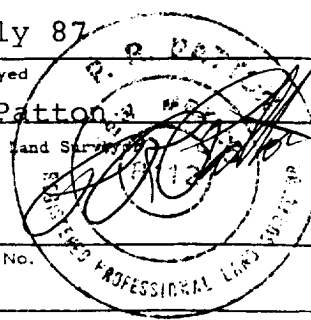
Date **August 26, 1987**

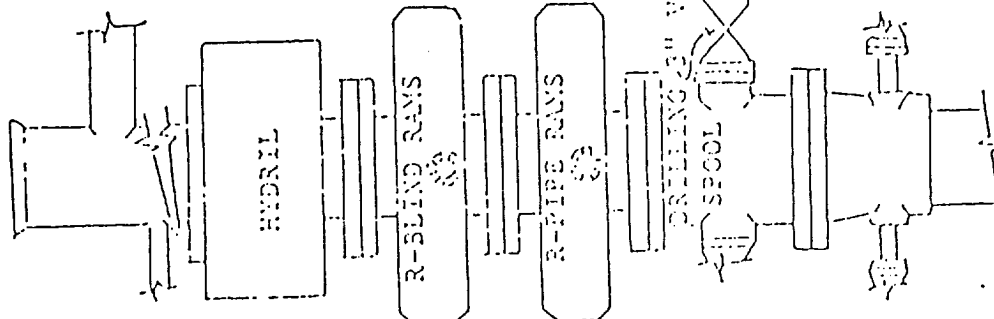
I hereby certify that the well location shown on this plat was plotted from field notes of actual surveys made by me or under my supervision, and that the same is true and correct to the best of my knowledge and belief.

**29 July 87**

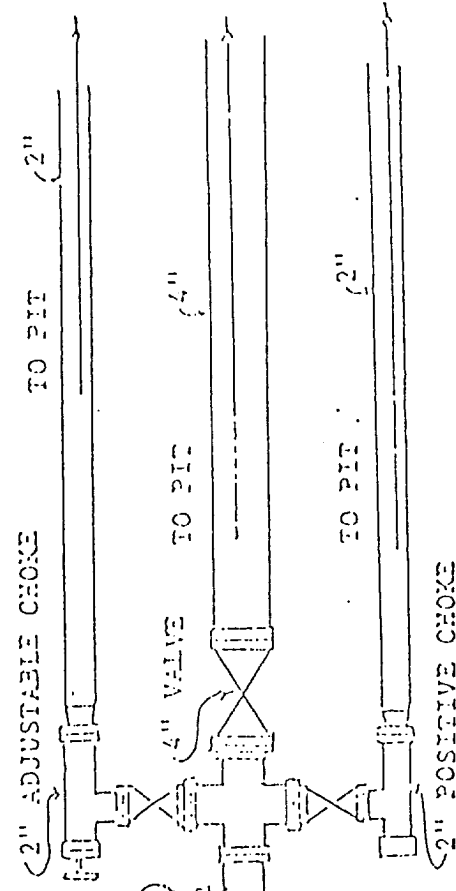
Date Surveyed  
**P.R. Patton**  
Registered Land Surveyor  
**8112**

Certificate No.





BLOW OUT PREVENTION EQUIPMENT  
 10" 900s ALL FLANGED CONNECTIONS  
 3,000# WORKING PRESSURE - 6,000# TEST



## APPLICATION FOR DRILLING

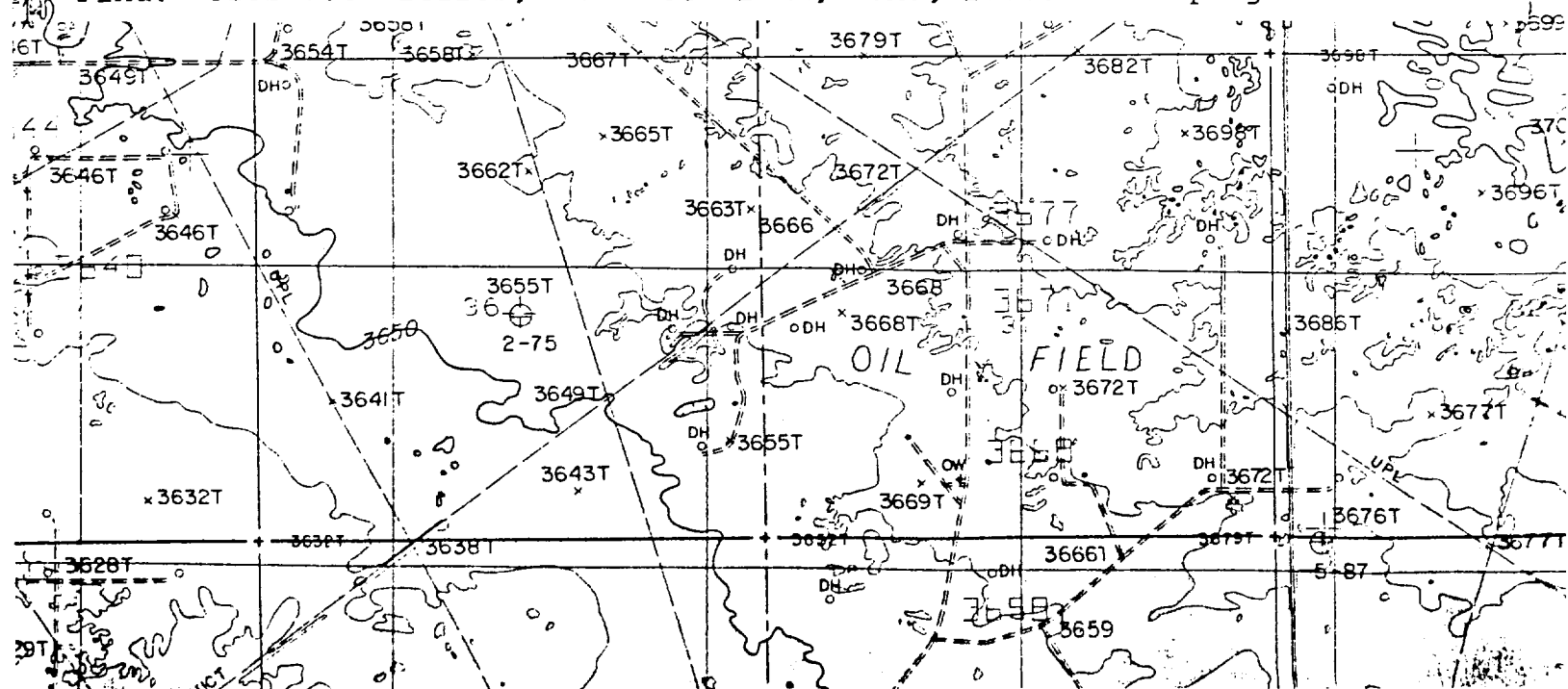
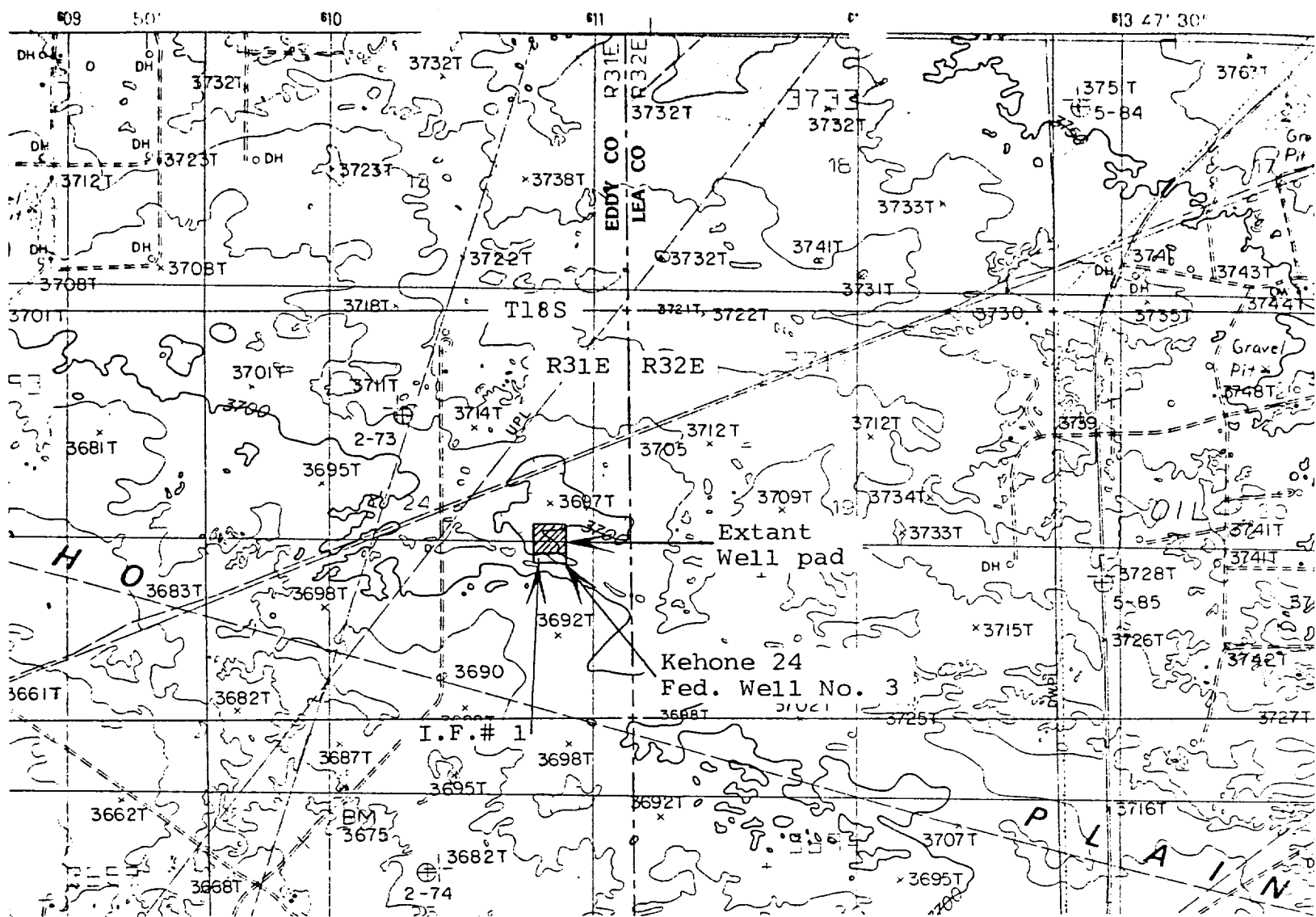
In conjunction with Form 9-331C, Application for Permit to Drill subject well, Ray Westall submits the following ten items of pertinent information in accordance with BLM requirements:

1. The Geological surface formation is quaternary.
2. The estimated tops of geologic markers are as follows:

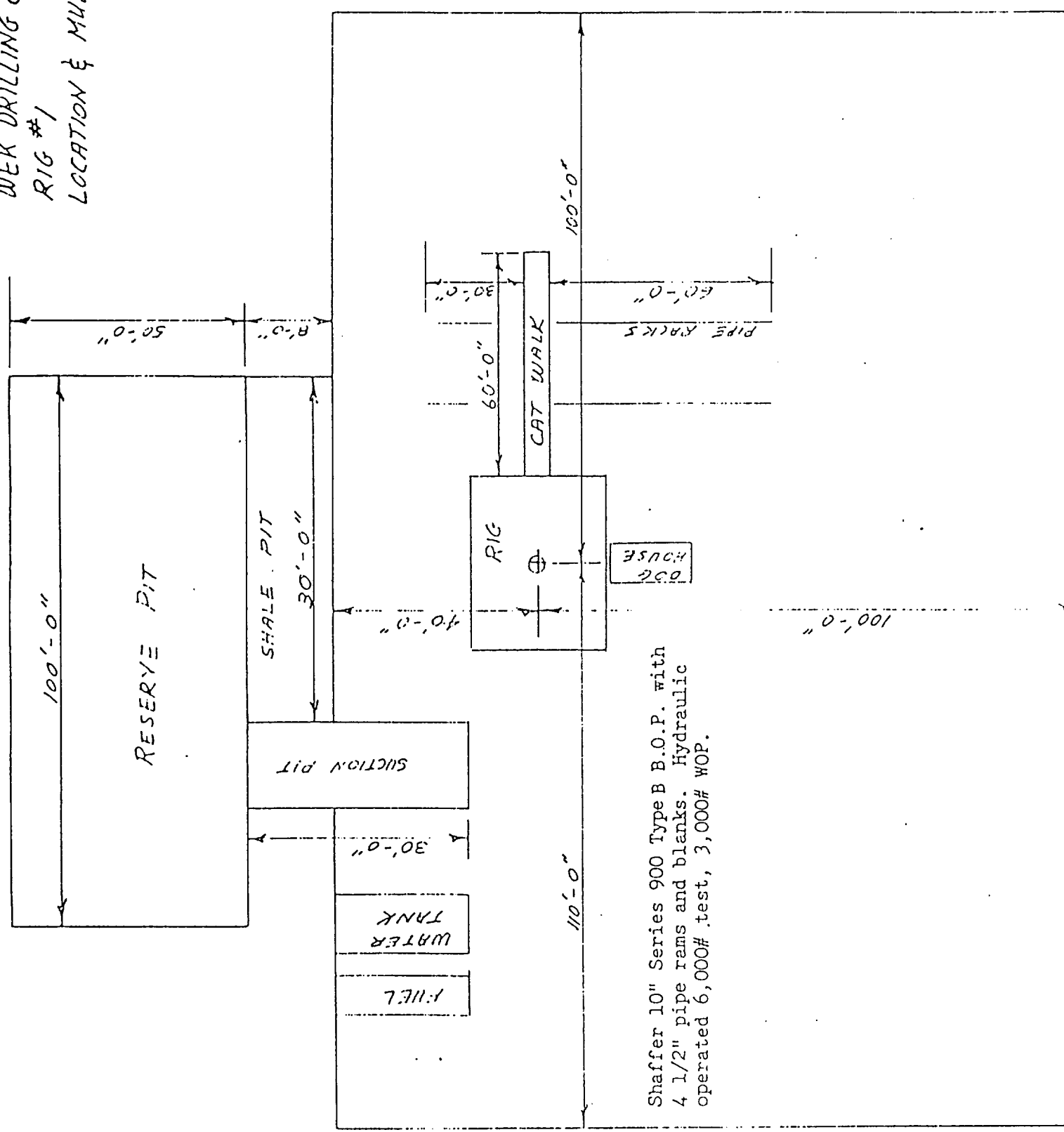
Yates	2050
7 Rivers	2500
Queen	3050
Grayburg	3500
San Andres	3850
3. The estimated depths at which anticipated water, oil & gas formations are expected to be encountered:

Water	180
-------	-----

Oil & gas zones listed above in item #2.
4. Proposed Casing Program: See 9-331C
5. Pressure Control Equipment: See 9-331C and Exhibit E.
6. Mud Program: Mud up 100 to 150' before TD and circulate 2 hours after TD and pull out laying down and running casing.
7. Auxiliary Equipment: N/A
8. Testing, Logging and Coring Program: (E) logs, CNL/FDC, DLL.
9. No abnormal pressures or temperatures are anticipated.
10. Anticipated Starting Date: As soon as possible.



WEK DRILLING CO., INC.  
 RIG #1  
 LOCATION & MUD PIT SPECS.



Shaffer 10" Series 900 Type B B.O.P. with  
 4 1/2" pipe rams and blanks. Hydraulic  
 operated 6,000# test, 3,000# WOP.