

ATTACHMENT TO FORM 3160-3 (APD)
UNION TEXAS PETROLEUM CORPORATION
FEDERAL 9-1
EDDY COUNTY, NEW MEXICO

Eight Point Drilling Plan

I. Geologic Marker Tops

<u>Formation</u>	<u>Top</u>
Quaternary Alluvium	Surface
Salt	\pm 1,450'
Yates	1,950'
Queen	3,070'
San Andres	4,140'
Bone Spring	5,400'
1st Bone Spring Carb	7,480'
2nd Bone Spring Sand	7,750'

II. Mineral, Water, Oil, or Gas Bearing Formations

<u>Formation</u>	<u>Top</u>	<u>Possible Content</u>	<u>Plan for Protection</u>
Santa Rosa	400'	Water	13-3/8" casing cemented to surface
Yates	1,950'	Gas	8-5/8" casing cemented to surface
Queen	3,070'	Oil or Gas	5-1/2" casing
Bone Spring Carb	7,480'	Oil	5-1/2" casing cemented to 4,000'
Bone Spring Sand	7,750'	Oil	5-1/2" casing cemented to 4,000'

III. Specifications for Pressure Control

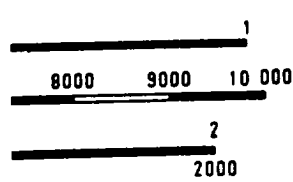
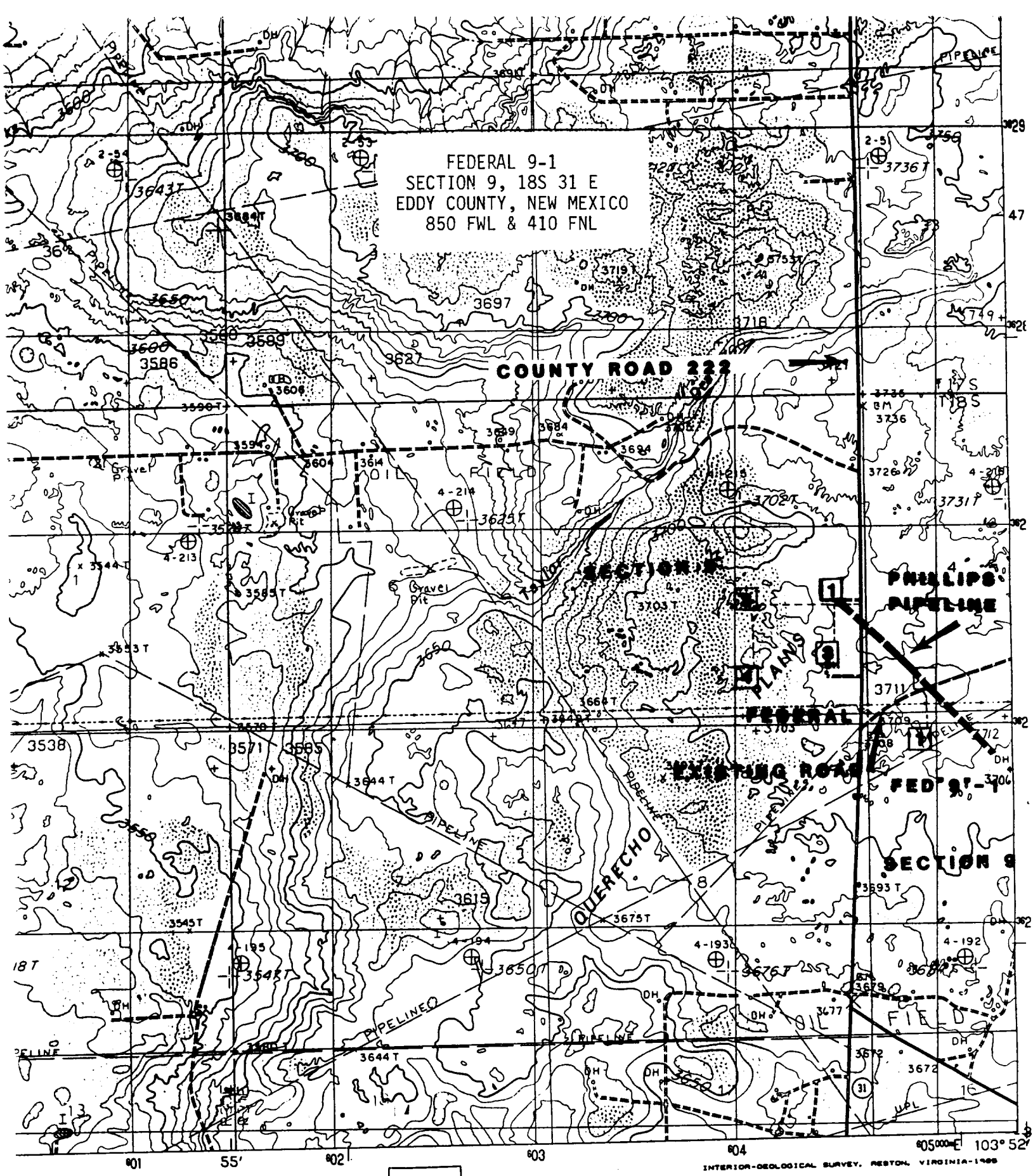
The 13-3/8" surface pipe will have 2M WP equipment installed while the 8-5/8" will have 3M WP equipment installed. BOP's to be tested to 500 psi prior to drilling out under surface casing and 2000 psi prior to drilling out intermediate casing. The BOP's will be tested when installed, prior to drilling out of surface and intermediate casing, and once each week. The well control equipment used will comply with API RP 53 specifications. Drawings are attached.



LTR



Job separation sheet



QUADRANGLE LOCATION

1	2	3	1 Basin Well
			2 Handaw Tank
			3 Affluent NW

EXHIBIT - A ROAD LEGEND

- Improved Road
- Unimproved Road
- Trail
- Interstate Route
- U.S. Route
- State Route