

NO. OF COPIES RECEIVED	
DISTRIBUTION	
SANTA FE	
FILE	
U.S.G.S.	
LAND OFFICE	
OPERATOR	

RECEIVED  
NEW MEXICO OIL CONSERVATION COMMISSION  
DEC 29 '87  
O. C. D.  
ARTESIA, OFFICE

30-015-15861  
Form C-101  
Revised 1-1-65

5A. Indicate Type of Lease
STATE <input checked="" type="checkbox"/> FEE <input type="checkbox"/>
5. State Oil & Gas Lease No.
K4222

# APPLICATION FOR PERMIT TO DRILL, DEEPEN, OR PLUG BACK

1a. Type of Work	7. Unit Agreement Name
b. Type of Well OIL WELL <input checked="" type="checkbox"/> GAS WELL <input type="checkbox"/> OTHER <input type="checkbox"/> DRILL <input checked="" type="checkbox"/> DEEPEN <input type="checkbox"/> PLUG BACK <input type="checkbox"/> SINGLE ZONE <input type="checkbox"/> MULTIPLE ZONE <input type="checkbox"/>	8. Farm or Lease Name JMD State
2. Name of Operator Morexco, Inc.	9. Well No. 1
3. Address of Operator J. O. Box 481, Artesia, NM 88210	10. Field and Pool, or Wildcat Wildcat San Andres
4. Location of Well UNIT LETTER K LOCATED 1650 FEET FROM THE S LINE AND 1650 FEET FROM THE W LINE OF SEC. 12 TWP. 19S RGE. 27E NMPM	12. County Eddy
19. Proposed Depth 2500'	19A. Formation San Andres
20. Rotary or C.T. Rotary	
21. Elevations (Show whether DF, RT, etc.) 3482' Grd.	21A. Kind & Status Plug. Bond
21B. Drilling Contractor LaRue & Muncy	22. Approx. Date Work will start Jan. 1, 1988

## PROPOSED CASING AND CEMENT PROGRAM

SIZE OF HOLE	SIZE OF CASING	WEIGHT PER FOOT	SETTING DEPTH	SACKS OF CEMENT	EST. TOP
12 1/2"	8 5/8"		310'	200 sxs.	
7 7/8"	5 1/2"	10.5-15.5	2500'	600 sxs.	

Plan to spud Wildcat, Grayburg test on or before January 1, 1988 with a 12 1/2" bit. Set 310' of 8 5/8" with 200 sxs. cement. Drill out with a 7 7/8" bit with 10# brine to a depth of 2500' or less. If any commercial shows are present, 5 1/2" casing will be set with 600 sxs. of cement and circulated to surface. If dry hole, proper plugs will be set as prescribed by the N.M.O.C.D.

Ret. D#1  
N.M.O.C.D.  
1-8-88  
180 DAYS  
7/7/88  
UNDERWAY

ABOVE SPACE DESCRIBE PROPOSED PROGRAM: IF PROPOSAL IS TO DEEPEN OR PLUG BACK, GIVE DATA ON PRESENT PRODUCTIVE ZONE AND PROPOSED NEW PRODUCTIVE ZONE. GIVE BLOWOUT PREVENTER PROGRAM, IF ANY.

hereby certify that the information above is true and complete to the best of my knowledge and belief.

Signed Bucky Olson Title Agent Date 12-29-87

(This space for State Use)

Original Signed By  
Mike Williams

APPROVED BY Oil & Gas Inspector TITLE DATE JAN 07 1988

CONDITIONS OF APPROVAL, IF ANY:

NEW MEXICO OIL CONSERVATION COMMISSION  
 WELL LOCATION AND ACREAGE DEDICATION PLAT

Form C-102  
 Supersedes C-128  
 Effective 1-1-65

All distances must be from the outer boundaries of the Section.

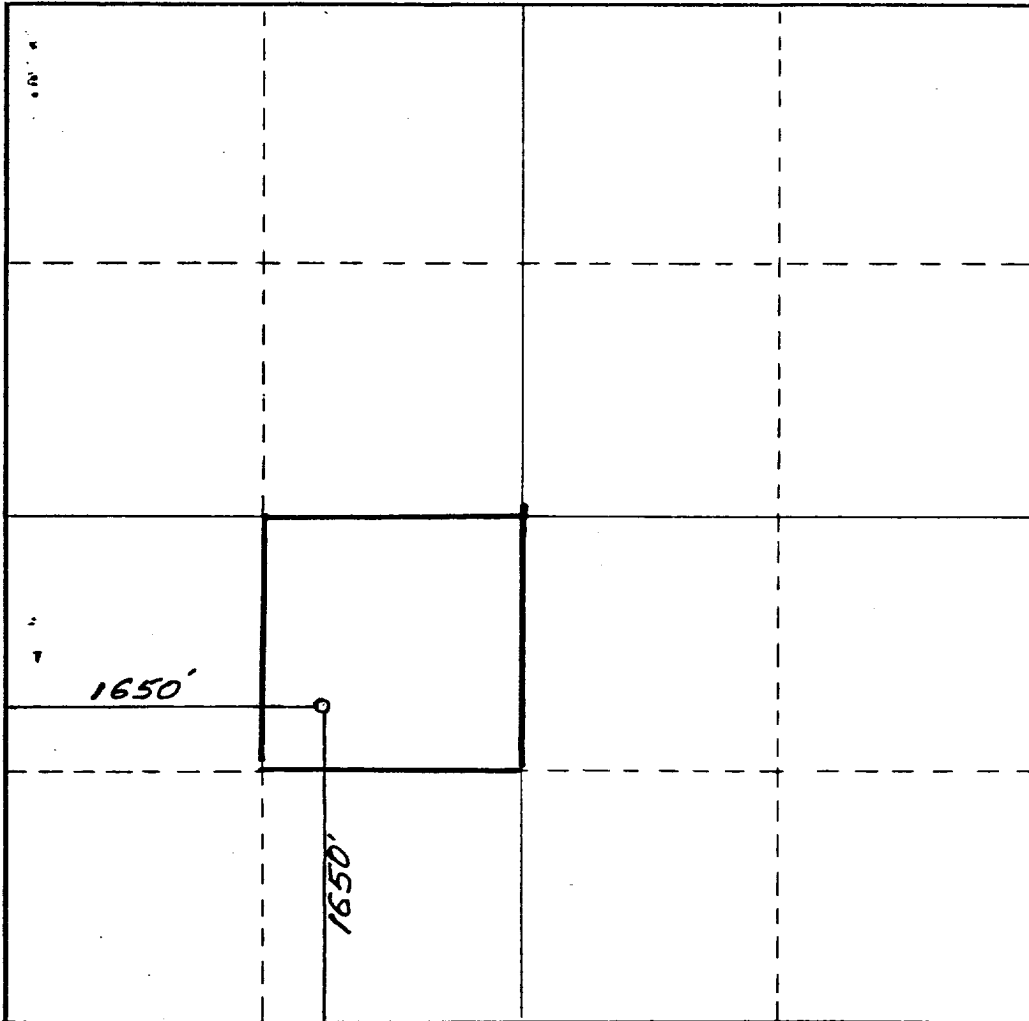
Operator <b>Morexco, Inc.</b>		Lease <b>J M D State</b>		Well No. <b>1</b>
Unit Letter <b>K</b>	Section <b>12</b>	Township <b>19 South</b>	Range <b>27 East</b>	County <b>Eddy County, N.M.</b>
Actual Footage Location of Well: <b>16 50</b> feet from the <b>South</b> line and <b>16 50</b> feet from the <b>West</b> line				
Ground Level Elev. <b>3484.</b>	Producing Formation <b>San Andres</b>	Pool <b>Wildcat San Andres</b>	Dedicated Acreage: <b>40</b> Acres	

1. Outline the acreage dedicated to the subject well by colored pencil or hachure marks on the plat below.
2. If more than one lease is dedicated to the well, outline each and identify the ownership thereof (both as to working interest and royalty).
3. If more than one lease of different ownership is dedicated to the well, have the interests of all owners been consolidated by communitization, unitization, force-pooling, etc?

☐ Yes ☐ No If answer is "yes," type of consolidation \_\_\_\_\_

If answer is "no," list the owners and tract descriptions which have actually been consolidated. (Use reverse side of this form if necessary.) \_\_\_\_\_

No allowable will be assigned to the well until all interests have been consolidated (by communitization, unitization, forced-pooling, or otherwise) or until a non-standard unit, eliminating such interests, has been approved by the Commission.



CERTIFICATION

I hereby certify that the information contained herein is true and complete to the best of my knowledge and belief.

**Becky Olson**

Name

**Becky Olson**

Position

**Agent**

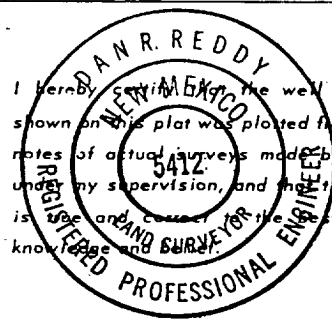
Company

**Morexco, Inc.**

Date

**12-29-87**

I hereby certify that the well location shown on this plat was plotted from field notes of actual surveys made by me or under my supervision, and that the same is true and correct to the best of my knowledge and belief.



Date Surveyed

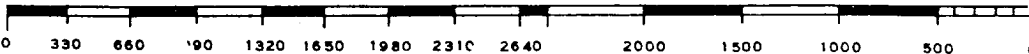
**December 22, 1987**

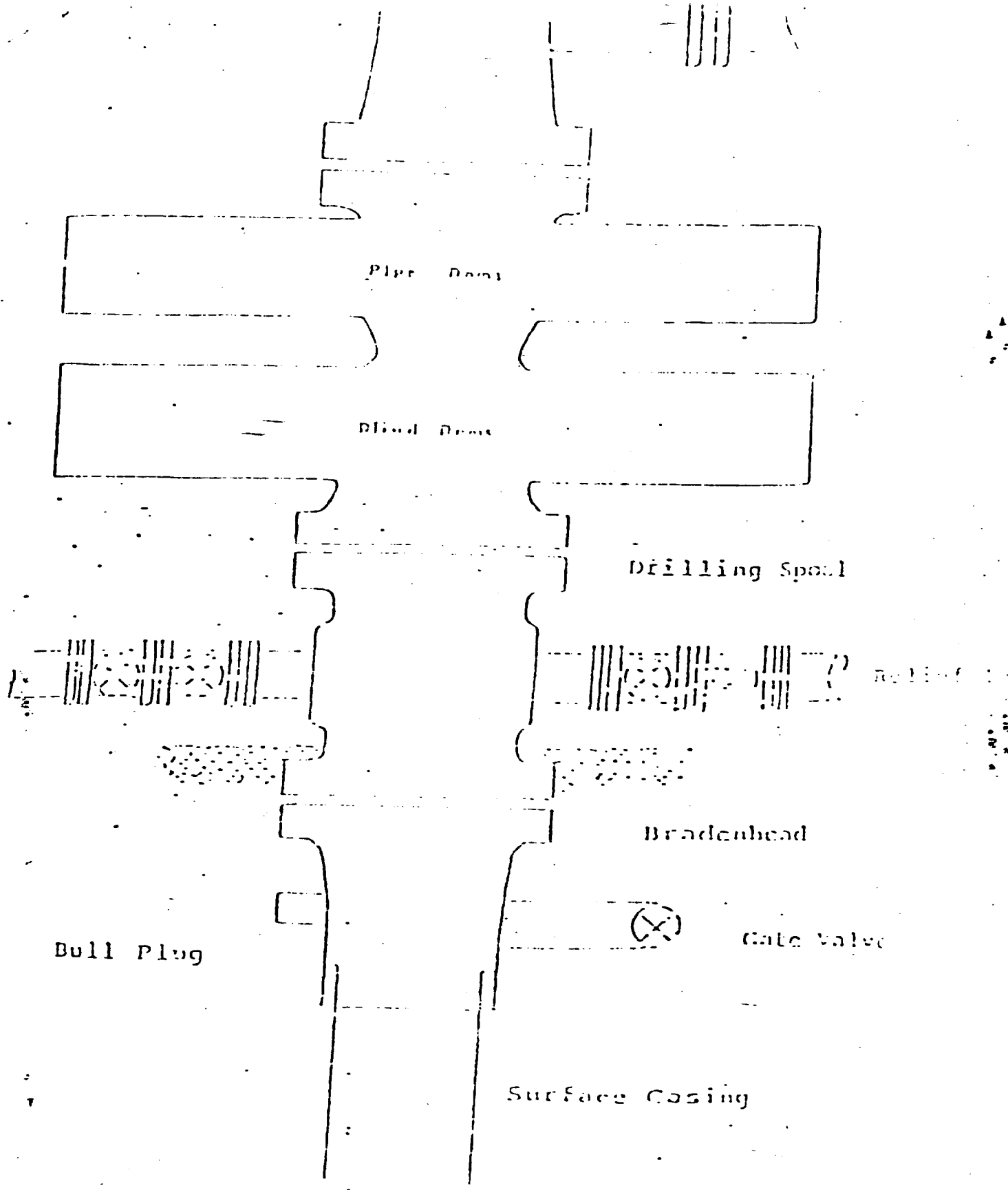
Registered Professional Engineer and/or Land Surveyor

**Dan R. Reddy**

Certificate No.

**NM PE&LS NO. 5412**





Series 900 Double Gate BOP, rated  
at 3000 psi Working Pressure

BLOWOUT PREVENTER ASSEMBLY