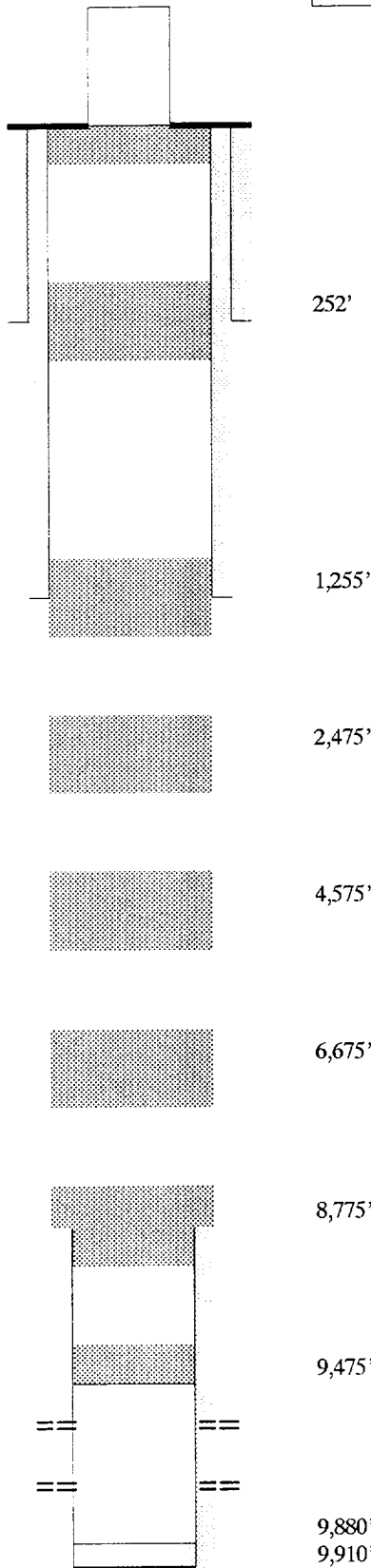


Nearburg Producing Company

Exploration & Production

Well Name: Anderson 15 # 1	County: Eddy
Field Name: Cemetary Morrow	State: New Mexico
Date: 09/20/94	Formation: Morrow

P & A Wellbore Schematic



13 3/8" Casing Set at 352'
 Hole Size 17 1/2"
 350 Sacks of Cement – Circulated to Surface

8 5/8" Casing Set at 1,355'
 Hole Size 12 1/4"
 625 Sacks of Cement – Circulated to Surface

4 1/2" Casing Set at 9,910'
 Hole Size 7 7/8"
 Cement – 275 Sacks of Cement. Temperature Survey TOC 8,975'

Perforations
 9565' – 9647', 78 Shots

9,880'
 9,910'