

UNITED STATES
DEPARTMENT OF THE INTERIOR
GEOLOGICAL SURVEY

APPLICATION FOR PERMIT TO DRILL, DEEPEN, OR PLUG BACK

1a. TYPE OF WORK
DRILL ☒ DEEPEN ☐ PLUG BACK ☐

b. TYPE OF WELL
OIL WELL ☒ GAS WELL ☐ OTHER ☐ SINGLE ZONE ☐ MULTIPLE ZONE ☐

2. NAME OF OPERATOR
Marathon Oil Company

3. ADDRESS OF OPERATOR
P.O. Box 552, Midland, Texas 79702

4. LOCATION OF WELL (Report location clearly and in accordance with any State requirements)
At surface 660' FSL & 1980' FWL
At proposed prod. zone Same as above

14. DISTANCE IN MILES AND DIRECTION FROM NEAREST TOWN OR POST OFFICE*
10 miles ESE from Loco Hills, New Mexico

15. DISTANCE FROM PROPOSED* LOCATION TO NEAREST PROPERTY OR LEASE LINE, FT. (Also to nearest drlg. unit line, if any) 660' & 660'

16. NO. OF ACRES IN LEASE 960.26

17. NO. OF ACRES ASSIGNED TO THIS WELL 40

18. DISTANCE FROM PROPOSED LOCATION* TO NEAREST WELL, DRILLING, COMPLETED, OR APPLIED FOR, ON THIS LEASE, FT. 660'

19. PROPOSED DEPTH 9000'

20. ROTARY OR CABLE TOOLS Rotary

21. ELEVATIONS (Show whether DF, RT, GR, etc.)
3739.3' GR 3723.3'

22. APPROX. DATE WORK WILL START*
As soon as possible

5. LEASE DESIGNATION AND SERIAL NO.
LC-029388(d)

6. IF INDIAN, ALLOTTEE OR TRIBE NAME

7. UNIT AGREEMENT NAME

8. FARM OR LEASE NAME
Johnson "B" Federal

9. WELL NO.
6

10. FIELD AND POOL, OR WILDCAT
Undesignated (Bone Spring)

11. SEC., T., R., M., OR BLK. AND SURVEY OR AREA
Sec 11, T-18-S, R-31-E

12. COUNTY OR PARISH
Eddy

13. STATE
New Mexico

23. PROPOSED CASING AND CEMENTING PROGRAM				
SIZE OF HOLE	SIZE OF CASING	WEIGHT PER FOOT	SETTING DEPTH	QUANTITY OF CEMENT
17 1/2"	13 3/8"	48	750'	835 sxs Circulate
11"	8 5/8"	24.32	2700'	1350 sxs Circulate
7 7/8"	5 1/2"	15.5	9000'	1500 sxs

Propose to drill no deeper than 9000'.

All casing well be cemented in accordance with regulations and by approved methods.

Blowout preventors will be as outlined in Additional Information (See Exhibits).

IN ABOVE SPACE DESCRIBE PROPOSED PROGRAM: If proposal is to deepen or plug back, give data on present productive zone and proposed new productive zone. If proposal is to drill or deepen directionally, give pertinent data on subsurface locations and measured and true vertical depths. Give blowout preventer program, if any.

24.

SIGNED

Derry L. Lewis

TITLE Dist. Drlg Superintendent

DATE 2-26-88

(This space for Federal or State office use)

PERMIT NO.

APPROVAL DATE

APPROVED BY

TITLE

DATE

CONDITIONS OF APPROVAL, IF ANY:

NEW MEXICO OIL CONSERVATION COMMISS. V
WELL LOCATION AND ACREAGE DEDICATION PLAT

Form C-102
Supersedes C-128
Effective 1-1-65

All distances must be from the outer boundaries of the Section

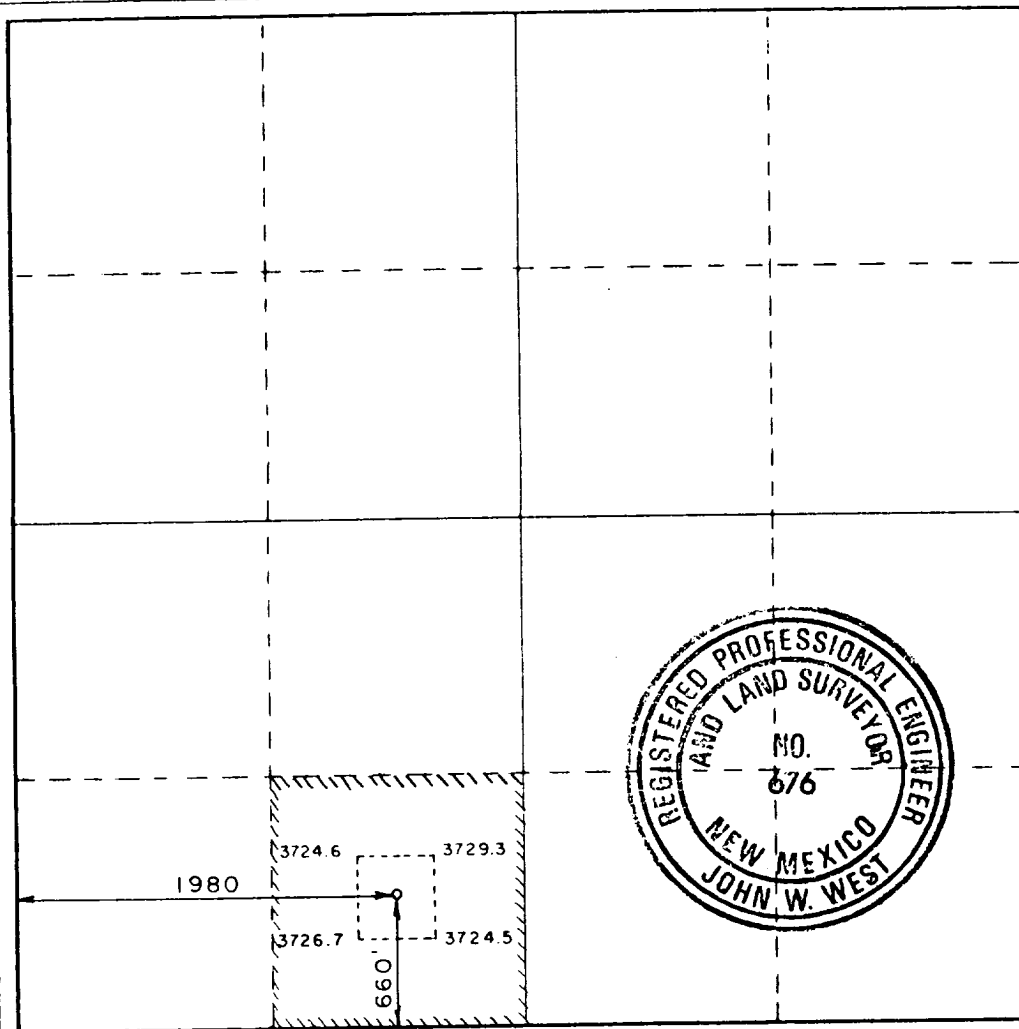
Operator Marathon Oil Company		Lease Johnson Federal		Well No. 6
Tract Letter N	Section 11	Township 18 South	Range 31 East	County Eddy
Actual Footage Location of Well: 1980 feet from the West line and 660 feet from the South line				
Ground Level Elev. 3723.3	Producing Formation Bone Spring	Pool UND. TAMANO BLUE SPRING Undesignated	Dedicated Acreage: 40 Acres	

1. Outline the acreage dedicated to the subject well by colored pencil or hatchure marks on the plat below.
2. If more than one lease is dedicated to the well, outline each and identify the ownership thereof (both as to working interest and royalty).
3. If more than one lease of different ownership is dedicated to the well, have the interests of all owners been consolidated by communitization, unitization, force-pooling, etc?

☐ Yes ☐ No If answer is "yes," type of consolidation _____

If answer is "no," list the owners and tract descriptions which have actually been consolidated. (Use reverse side of this form if necessary.) _____

No allowable will be assigned to the well until all interests have been consolidated (by communitization, unitization, forced-pooling, or otherwise) or until a non-standard unit, eliminating such interests, has been approved by the Commission.



CERTIFICATION

I hereby certify that the information contained herein is true and complete to the best of my knowledge and belief.

Terry L. Rivers
Name

Terry L. Rivers
Position

Dist. Dirg Superintendent
Company

Marathon Oil Company
Date

3-4-88

I hereby certify that the well location shown on this plat was plotted from field notes of actual surveys made by me or under my supervision, and that the same is true and correct to the best of my knowledge and belief.

Date Surveyed
February 24, 1988

Registered Professional Engineer
and/or Land Surveyor

John W. West
Certificate No. JOHN W. WEST, 676

RONALD J. EIDSON, 3239

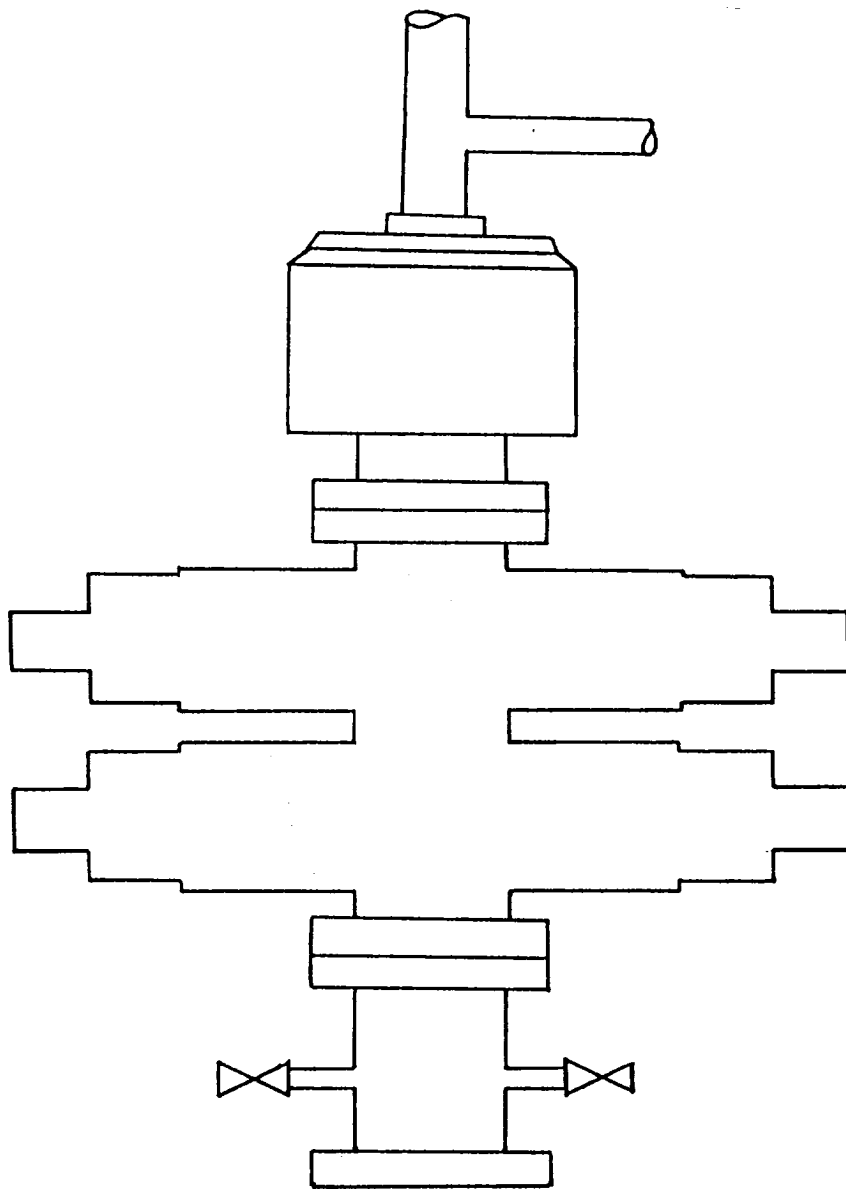


EXHIBIT "A"

Johnson "B" Federal #6
BOP Stack Arrangement
13 3/8" Surface Casing

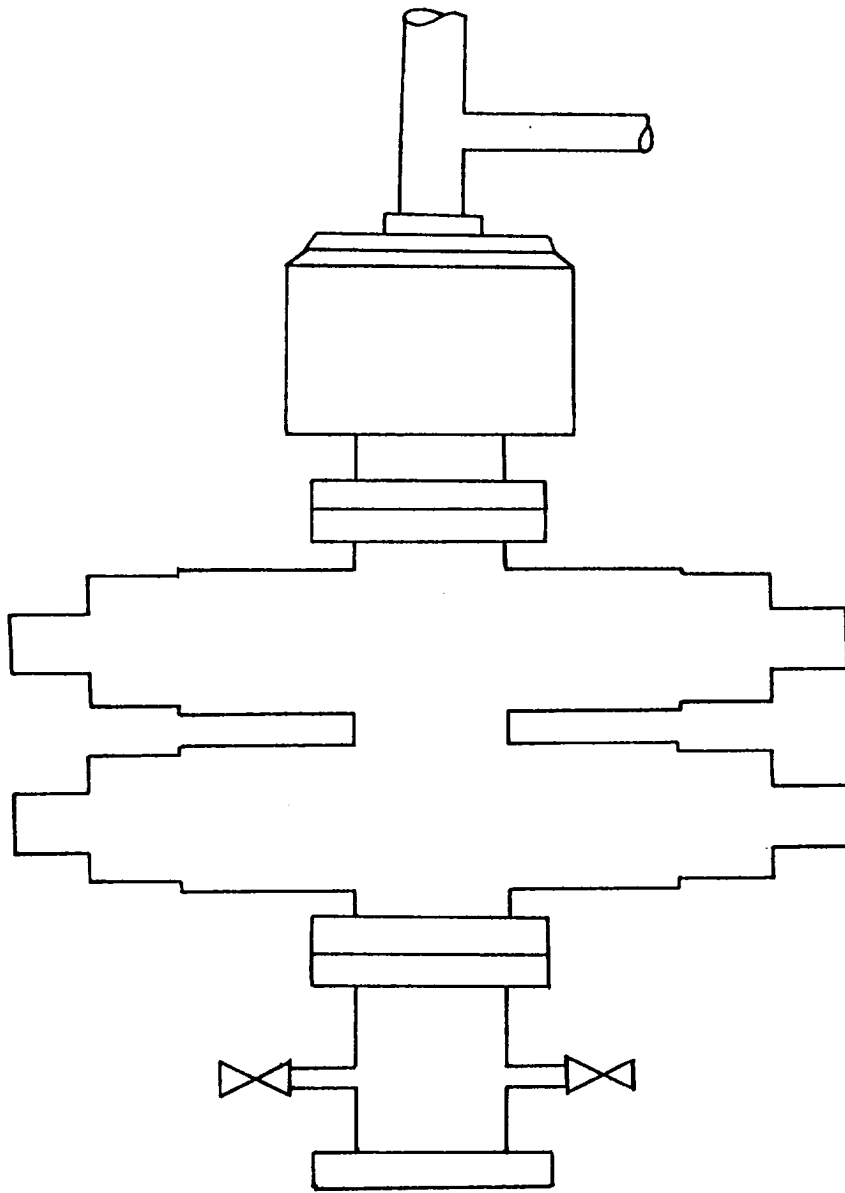


EXHIBIT "B"

Johnson "B" Federal #6

BOP Stack Arrangement

8 5/8" Intermediate Casing

MARATHON OIL COMPANY

JOHNSON "B" FEDERAL WELL NO. 6

ADDITIONAL INFORMATION

Comply with Order 1

In conjunction with Form 9-331C, Application to drill subject well, Marathon Oil Company submits the following items of informations in accordance with BLM requirements:

1. Geologic Name of Surface Formation

Quaternary Alluvium

2. Estimated Tops of Important Geologic Markers

Rustler	800	Bone Spring	5890
Yates	2270	1st Sand	7615
Seven Rivers	2730	2nd Carb	7935
Queen	3370	2nd Sand	8230
Grayburg	3820	3rd Carb	8880
San Andres	4330		
Delaware	4630		

3. Estimated Depths of Anticipated Water, Oil or Gas Bearing Formations

Yates (Water)	2270	Bone Spring	5890
Seven Rivers (Water)	2730	1st Sand (Water & Oil)	7615
Queen (Water & Oil)	3370	2nd Carb (Water & Oil)	7935
Grayburg (Water & Oil)	3820	2nd Sand (Water & Oil)	8230
San Andres (Water & Oil)	4330	3rd Carb (Water & Oil)	8880
Delaware (Water & Oil)	4630		

Additional Information

6. Proposed Mud Program

0 - 750	Native; Mud Wt: 8.3 - 9.2, Viscosity 28-34 Sec
750 - 2,700	Brine Water; Mud Wt: 9.0 - 10.0, Viscosity 28-32 Sec
2,700 - 7,000	Cut Brine; Mud Wt: 8.6-8.8, Viscosity 28-32 Sec
7,000 - 9,000	Cut Brine; Mud Wt: 8.8 - 9.2, Viscosity 32-44 Sec

7. Auxiliary Equipment

A stabbing valve will be kept on the floor to be used when the kelly is not in the string.

8. Testing, Logging, and Coring Programs

A. Coring Program:

None anticipated

B. Testing Program:

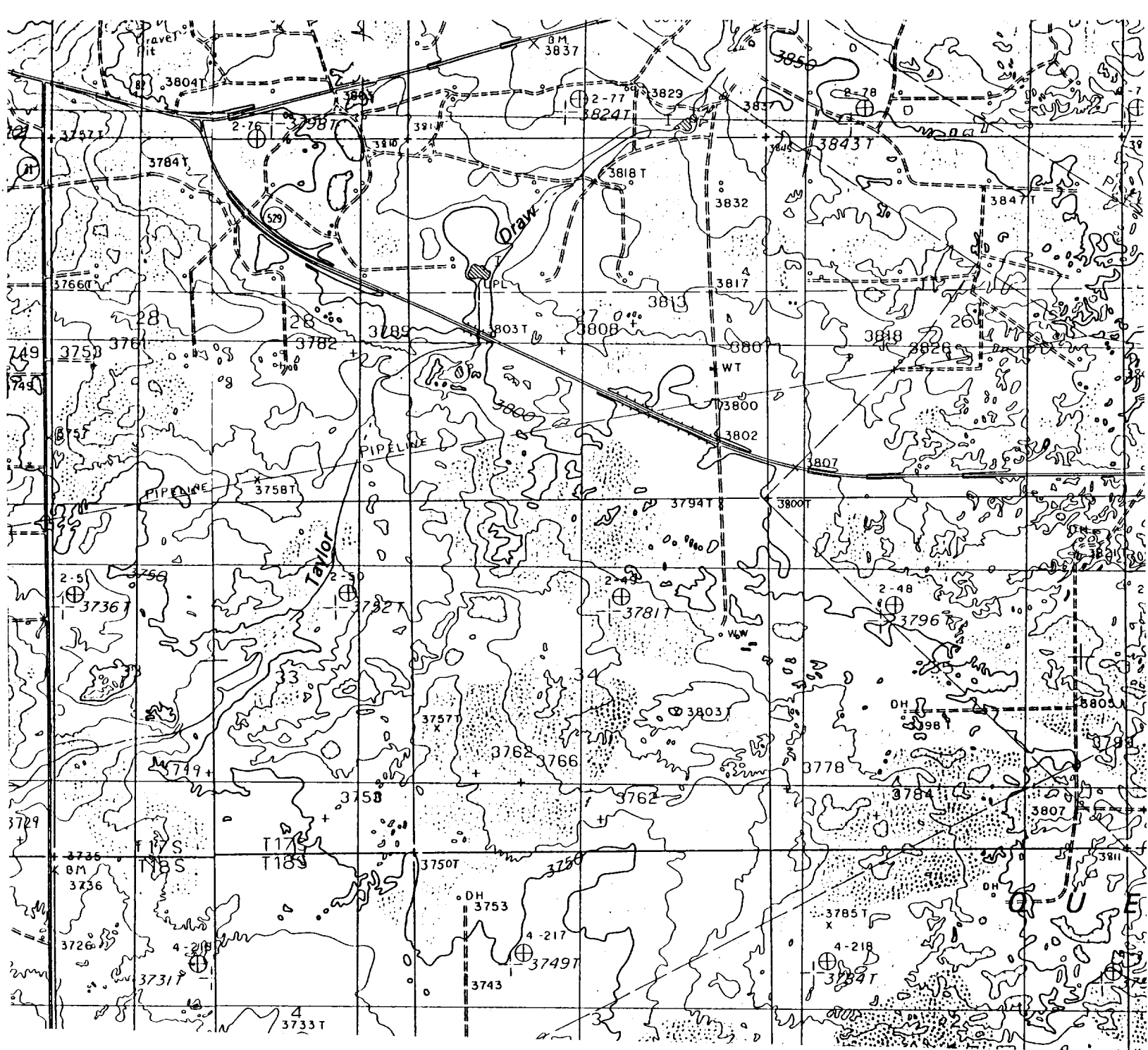
None anticipated

C. Logging Program:

TD to Intermediate casing - LDT-CNL, DLL

9. Abnormal Pressures, Temperatures or Potential Hazards

-- anticipated



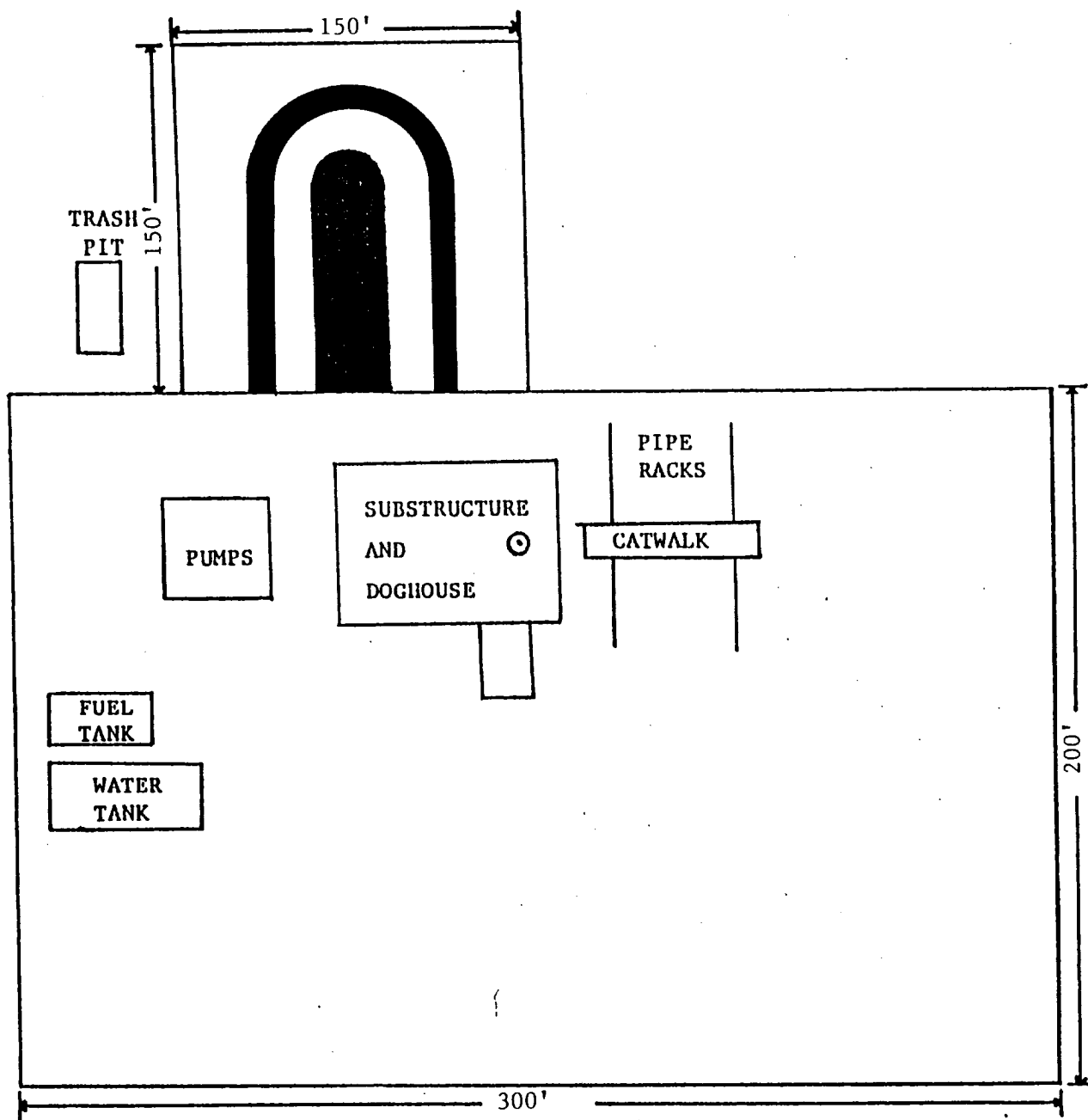


EXHIBIT "E"

Johnson "B" Federal #6
 Relative Location
 of
 Rig Components