

NEW MEXICO OIL CONSERVATION COMMISSION
WELL LOCATION AND ACREAGE DEDICATION PLAT

Form C-102
Supersedes C-128
Effective 1-1-65

All distances must be from the outer boundaries of the Section

Operator Santa Fe Energy Resources, Inc.		Lease Lusk 15 Federal		Well No. 1
Section 15	Township 19 South	Range 31 East	County Eddy County	
Actual Well Location of Well: 660 feet from the South line and 660 feet from the East line				
Ground Level Elev. 3539.0	Producing Formation Delaware	Pool Wilcat (Delaware)	Dedicated Acreage 40 Acres	

- Outline the acreage dedicated to the subject well by colored pencil or hachure marks on the plat below.
- If more than one lease is dedicated to the well, outline each and identify the ownership thereof (both as to working interest and royalty).
- If more than one lease of different ownership is dedicated to the well, have the interests of all owners been consolidated by communitization, unitization, force-pooling, etc?

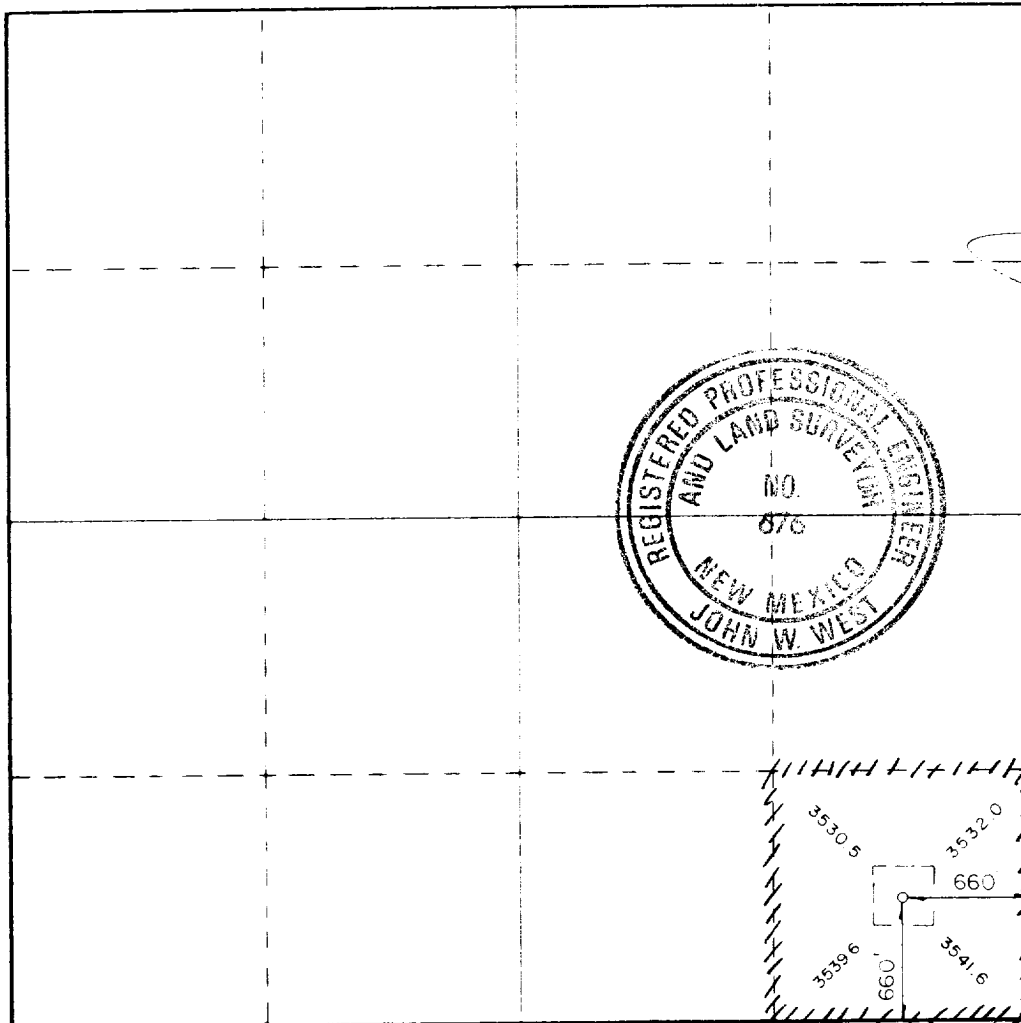
RECEIVED
AUG 25 1995

☐ Yes ☐ No If answer is "yes," type of consolidation _____

OIL CON. DIV.

If answer is "no," list the owners and tract descriptions which have actually been consolidated (on reverse side of this form if necessary.) _____

No allowable will be assigned to the well until all interests have been consolidated (by communitization, unitization, forced-pooling, or otherwise) or until a non-standard unit, eliminating such interests, has been approved by the Commission.



CERTIFICATION

I hereby certify that the information contained herein is true and complete to the best of my knowledge and belief.

Terry McCallough
Position
Sr. Production Clerk

Company
Santa Fe Energy Resources, Inc.

Date
Aug. 24, 1995

I hereby certify that the well location shown on this plat was plotted from field notes of actual surveys made by me or under my supervision, and that the same is true and correct to the best of my knowledge and belief.

Date Surveyed
May 6, 1988

Registered Professional Engineer and/or Land Surveyor

John W. West
Certificate No. JOHN W. WEST, 676

RONALD J. EIDSON, 3239